



Identifying Mature and Old Forests

IN WESTERN WASHINGTON

by Robert Van Pelt



WASHINGTON STATE DEPARTMENT OF
Natural Resources
Doug Sutherland - Commissioner of Public Lands

Acknowledgements

The need for this guide became apparent after the 2004 Legislature directed DNR to conduct an inventory of old-growth forest stands on state lands as defined by a panel of scientists. The product of that effort, *Definition and Inventory of Old Growth Forests on DNR-Managed State Lands* (2005), made it clear that it was important for field personnel to be able to identify with confidence mature and old-growth forests throughout western Washington.

It is essential to acknowledge the people I worked with on the Old Growth Definition Committee: Dr. Jerry F. Franklin, Dr. Thomas Spies, Dr. Paula Swedeen, Dr. Rex Crawford, Sabra Hull, Steve Curry, and Walt Obermeyer, all of whom contributed to the concepts which form the basis of this guide.

Many people reviewed the text during its various iterations, which greatly contributed to improvements in both readability and scientific content:

Richard Bigley
Angus Brodie
Chris Earle
Jerry Franklin
Keala Hagman

Sabra Hull
Arthur Jacobson
Andrew Larson
Corina Logan
Tami Miketa

Kyra Nourse
Walt Obermeyer
Jeff Ricklefs

Many thanks to the University of Washington College of Forest Resources for their contribution to the printing effort.

The layout and design of this guide was ably and beautifully conducted by Nancy Charbonneau and Jane Chavey of the DNR Communications Group.

Photos, maps, and drawings by author except where indicated otherwise.

Washington State Department of Natural Resources

This guide was produced under contract as part of the ongoing research and application of new information to inform both land management and resource protection goals of the department. The Washington State Department of Natural Resources manages 5 million acres of land - forests, farms, commercial properties and aquatic lands to provide perpetually for both revenue and conservation objectives for the people of Washington State.

Identifying Mature and Old Forests in Western Washington will be a valuable tool for agency forestland managers and others interested in the complexities and ecological relationships that give rise to older forests. This guide will be used by the department to aid in the identification and protection of these unique forest structures.

Suggested Citation

Van Pelt, R. 2007. *Identifying Mature and Old Forests in Western Washington*. Washington State Department of Natural Resources, Olympia, WA. 104 p.

*This guide was developed
to support management of
forested state trust lands.*

Washington State
Department of Natural Resources
Land Management Division
Ecosystem Services Section

June 2007

Identifying Mature and Old Forests

IN WESTERN WASHINGTON

by Robert Van Pelt

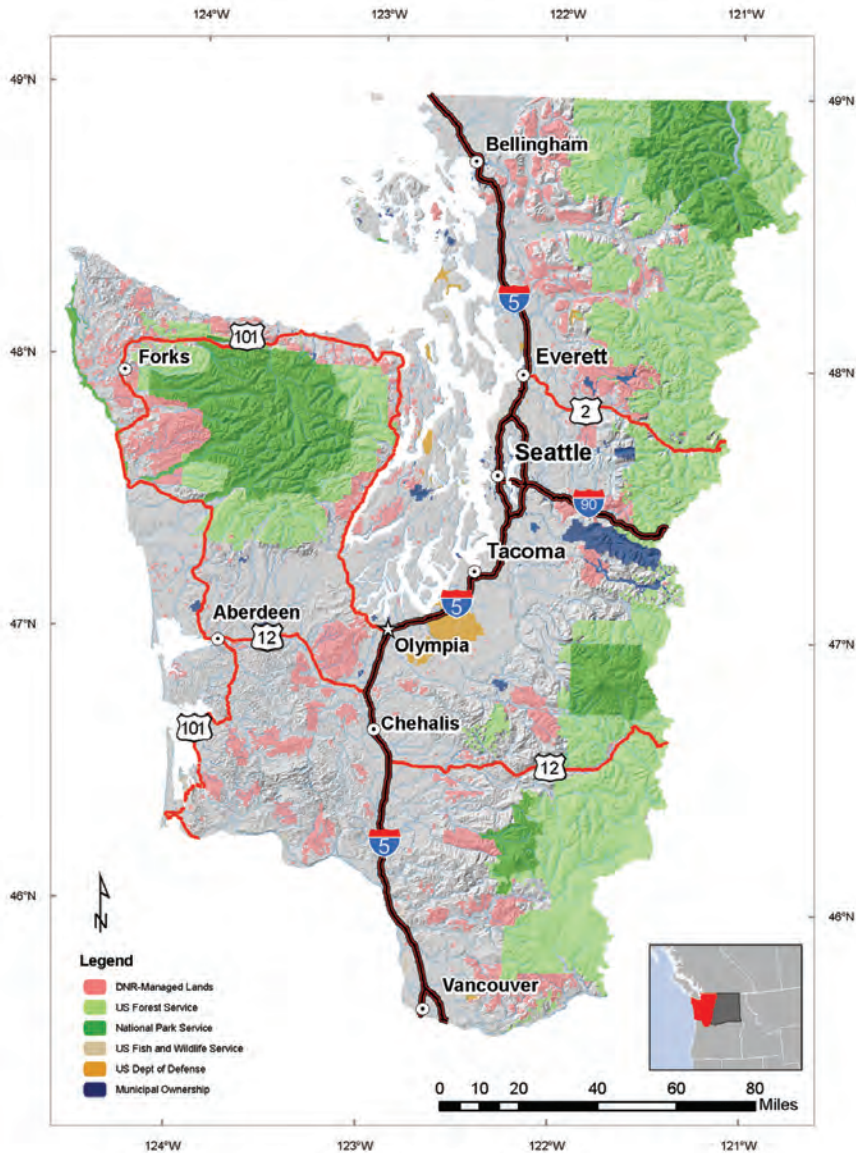


WASHINGTON STATE DEPARTMENT OF
Natural Resources
Doug Sutherland - Commissioner of Public Lands

Table of Contents

5	Introduction
6	Guide Organization
9	Environmental Setting of Western Washington
12	Key to Vegetation Zones in Western Washington
16	Fire in Western Washington Prior to Euro-American Settlement
22	Wind Disturbances
24	Important Information on Shade Tolerance
27	Stand Development in Natural Douglas fir Forests
27	Disturbance and legacy creation
32	Cohort establishment
34	Canopy closure
35	Biomass accumulation/Competitive exclusion
36	Maturation I
37	Maturation II
39	Vertical diversification
41	Horizontal diversification
42	Pioneer cohort loss
44	Other scenarios
46	Key to Stand Development Stages in Western Washington
49	Douglas fir
51	Bark characteristics
54	Lower crown characteristics
58	Crown form and tree vigor
64	Rating system for aging legacy trees
65	Longevity and death
67	Sitka spruce
68	Early growth patterns
72	Patterns in mature trees
73	Longevity and death
77	Noble fir
83	Western hemlock
88	Hemlock dwarf mistletoe
89	Longevity and death
93	Western redcedar
97	Pacific silver fir
101	Conclusion
101	English equivalents
102	Citations
103	Appendix-Stand development stage crosswalk

Locator map of Western Washington with major public ownerships



Map developed by Jeff Rickleffs and Ned Wright, DNR

Introduction

Introduction

Western Washington is part of the most heavily forested portion of the United States. Within this small region, a great diversity of environments can be found, ranging from the coastal rain forests of the Olympic Peninsula to the gravelly plains of the Puget lowlands and the glacier-clad peaks of the Cascade Mountains. Across this landscape, complex patterns of precipitation have resulted in a diversity of fire regimes. Despite this diversity, relatively few species of trees, primarily represented by long-lived conifers, are found within these forests.

Such varied environmental conditions can affect the physiology and appearance of the trees that occupy the region. The purpose of this guide is to help the reader interpret the ecology, disturbance history, and age of a given stand using features of the environment, including the physical characteristics of the trees themselves.



Introduction

This guide is intended to provide much of the necessary information needed to reconstruct stand history and discern stand development stages for the major forest types found in western Washington. The great size achieved by many trees coupled with the heart rots common in western Washington makes the use of increment borers impractical in many forests. Assessing the age of a forest without specific knowledge of the ages of the trees contained within is an exercise in gathering and deciphering the relevant pieces of data. A working ecological understanding of the major tree species, the environments where they grow, and the dominant disturbance regimes at play in a given stand is required when making determinations of stand age.

The scope of this guide will be limited to western Washington; a separate guide will cover eastern Washington.

Guide Organization

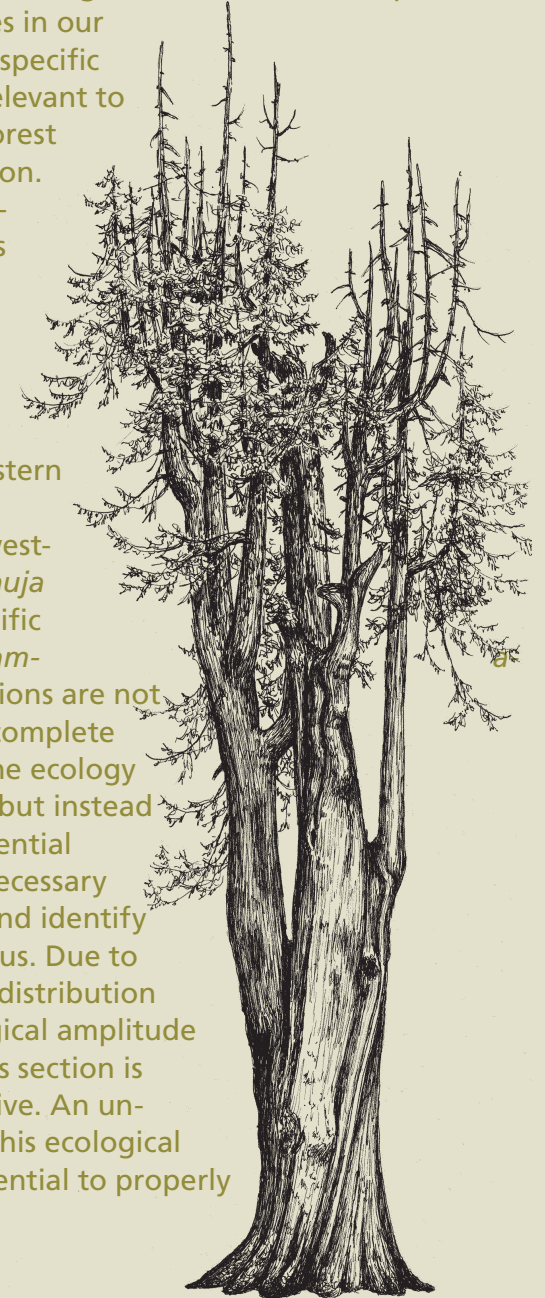
In order to identify mature and old forests, the great diversity of environments present in western Washington must be acknowledged. In addition, to discern age patterns in forests, one must understand a number of ecological concepts. Finally, the characteristics of the dominant species, important in the identification of mature and old forests, must be clearly understood.

This guide presents the general forces that drive the composition, structure, and the nature of western Washington forests. Physiographic and environmental gradients, fire and wind disturbance patterns, and the ecological characteristics of shade tolerance are discussed. An idealized model of forest stand development is presented in detail, applicable to most forests in western Washington. Variations of the model are also examined.

Introduction

The latter part of this guide addresses the important individual species in our forests, and the specific characteristics relevant to discussions on forest age and succession.

This includes sections on Douglas fir (*Pseudotsuga menziesii*), Sitka spruce (*Picea sitchensis*), noble fir (*Abies procera*), western hemlock (*Tsuga heterophylla*), western redcedar (*Thuja plicata*), and Pacific silver fir (*Abies amabilis*). These sections are not intended to be complete discussions on the ecology of each species, but instead focus on the essential characteristics necessary to understand and identify successional status. Due to the widespread distribution and wide ecological amplitude of Douglas fir, its section is the most extensive. An understanding of this ecological amplitude is essential to properly



Introduction

understand and discern stand development where Douglas fir occurs.

Several tree species are not specifically treated in this guide, including red alder (*Alnus rubra*), grand fir (*Abies grandis*), bigleaf maple (*Acer macrophyllum*), black cottonwood (*Populus balsamifera* ssp. *trichocarpa*), mountain hemlock (*Tsuga mertensiana*), yellow cedar (*Cupressus nootkatensis*), and subalpine fir (*Abies lasiocarpa*). These species are mentioned in the text when appropriate, but a specific section on each was deemed unnecessary. While red alder is abundant at lower elevations in western Washington, and pure stands are not uncommon, it is rare to find specimens older than 100 years of age. Its usefulness in a guide on identifying mature and old forests is therefore limited.

Environmental Setting of Western Washington

Although it is the smallest of the western states (184,824 km²), Washington is arguably the most diverse, encompassing nearly all of the major biological habitats found in the west. Annual precipitation ranges from 20 cm in the deserts of the Columbia Basin to 600 cm along the western flanks of Mount Olympus on the Olympic Peninsula. The Cascade Mountains divide the state into two regions: western Washington, with a strong maritime climatic influence; and eastern Washington, with a more continental climate. Near the Columbia Gorge, the boundary between eastern and western Washington is defined by the ridge between the Wind and Little White Salmon rivers. The total area is 66,824 km².

Western Washington lies on the edge of a large Mediterranean climate zone, centered on California. Mediterranean climates are characterized by warm, mild winters and hot, dry summers. While Washington is neither as hot nor as dry as California, the seasonal patterns are very similar. Throughout the entire region, including the coastal lowland rainforests, the summer months of July-September receive less than 5 percent of

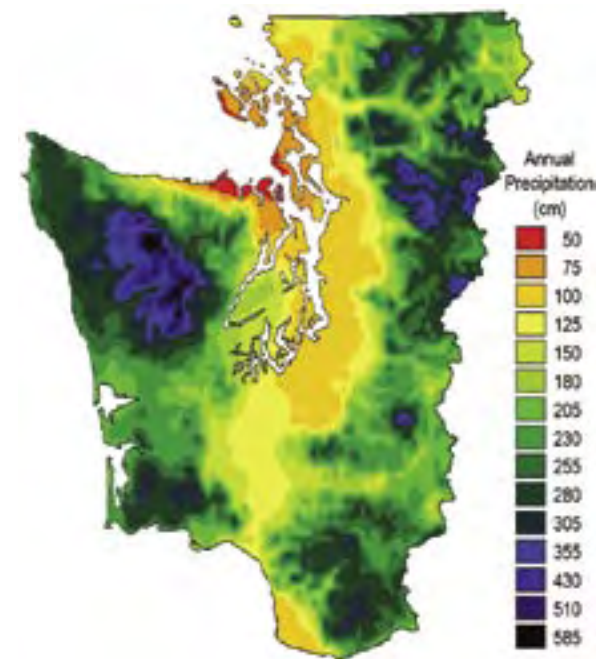


Figure 1. Annual Precipitation for Western Washington.

Environmental Setting of Western Washington

the total annual precipitation. Southwesterly oceanic storms are the primary source of precipitation for the region.

Western Washington contains a great diversity of habitats, from rain forests to alpine meadows and dry prairies. Along the northeastern, leeward side of the Olympic Mountains for example, a rain shadow is formed, parts of which receive only 43 cm of annual precipitation (Figure 1). Prior to the arrival of Euro-American settlers in the nineteenth century, all of western Washington was forested with the exception of 8.9 percent of the landscape above the alpine timberline and another 1.4 percent of non-forested prairies or wetlands

The dominance of evergreen conifers in the Pacific Northwest makes it unique among the temperate regions of the world. In all other temperate regions, including eastern North America, Europe, Asia, Australia, Chile, and New Zealand, conifers are relegated to early successional roles, limited to extreme habitats, or at best share dominance with flowering plants. Here, the opposite is true: flowering plants are relegated to early successional roles, as in the case of alders and cottonwoods, or limited to stressful habitats, as in the case of oaks and madronas. Prior to Euro-American settlement, more than 96 percent of the forests of western Washington were coniferous.

Physiographic regions are often used to divide areas by interrelated geology, physiography, soils, climate, and vegetation. Western Washington is usually



Figure 2. Physiographic Regions in Western Washington. Background image courtesy of NASA

Environmental Setting of Western Washington

divided into six physiographic regions, each with distinct, definable characteristics (Figure 2). The **Olympic Peninsula** is surrounded on three sides by salt water, and contains the massive Olympic Mountains with extensive areas above 1700 meters. The **Willapa Hills** are the Washington extension of the Coast Ranges, which continue southward into Oregon. Both the Olympic Peninsula and Willapa Hills are exposed to oceanic storms, and as such, are the Northwest's wettest regions. In the lee of these two regions are the **Puget Trough** and **Cowlitz/Chehalis Valleys**. These two regions are characterized by low elevations and much drier conditions. The Puget Trough occupies the region once covered by several hundred meters of ice from the Cordilleran glaciers of the Pleistocene. To the east of these valleys lie the Cascade Mountains. Within Washington, the Cascade Mountains are broken into two very different sections. The **North Cascades** are steep, dramatic

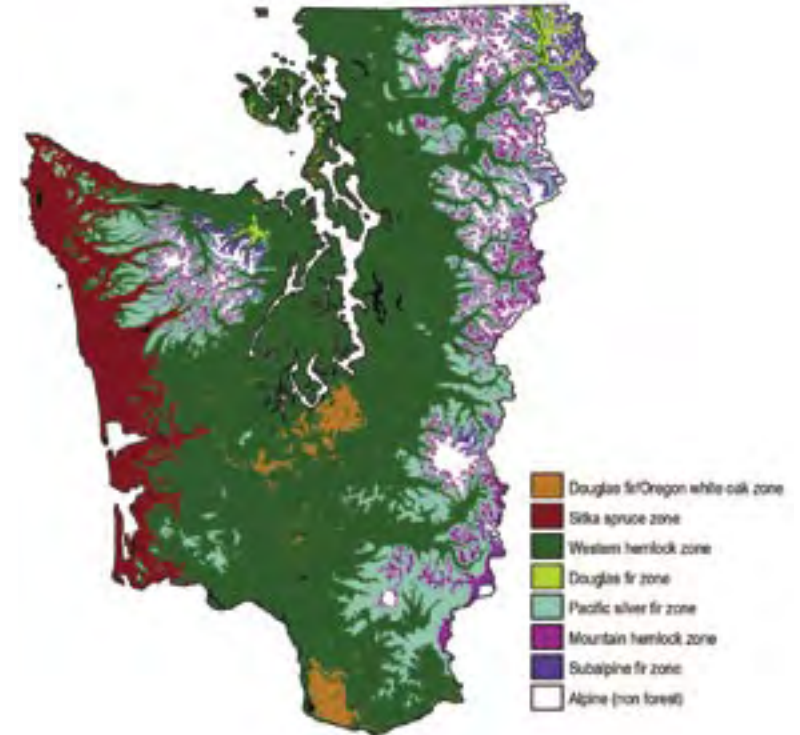


Figure 3. Vegetation Zones in Western Washington

Environmental Setting of Western Washington

mountains with complex geology. More than fifty glaciers coat the spires, peaks, and ridgelines of this mountainous landscape. In contrast, the **South Cascades** are characterized by low, forested ridges covering much older geologic features. Punctuating this ancient geologic landscape are three huge Quaternary volcanoes — Mount Rainier, Mount Adams, and Mount Saint Helens.

The steep, mountainous topography of western Washington has dramatic effects on precipitation and temperature. Accordingly, tree species have become stratified by their tolerance and competitive abilities. In **The Natural Vegetation of Oregon and Washington**, Franklin and Dyrness (1973) separate the region into vegetation zones based on the dominant tree species. Subsequent efforts by the USDA Forest Service and other agencies have further expanded and subdivided the vegetation zones into plant associations. Plant associations are groupings of plant species that recur on the landscape with particular environmental tolerances. They can be useful tools for predicting environmental conditions, site productivity, and response to forest management. In the simplest terms, western Washington can be divided into seven vegetation zones (Figure 3).

Key¹ to Vegetation Zones in Western Washington.

- | | |
|--|-----------------------------------|
| 1. Subalpine fir ≥ 10% cover | Subalpine fir zone |
| Subalpine fir < 10% cover | 2 |
| 2. Mountain hemlock ≥ 10% cover | Mountain hemlock zone |
| Mountain hemlock < 10% cover | 3 |
| 3. Pacific silver fir ≥ 10% cover | Pacific silver fir zone |
| Pacific silver fir < 10% cover | 4 |
| 4. Sitka spruce ≥ 10% cover | Sitka spruce zone |
| Sitka spruce < 10% cover | 5 |
| 5. Western hemlock present | Western hemlock zone |
| Western hemlock absent | 6 |
| 6. Douglas fir and/or Oregon white oak present and below 200 m elevation | 7 |
| Douglas fir present and above 200 m | Douglas fir zone |
| 7. Oregon ash present | Western hemlock zone |
| Oregon ash absent | Douglas fir/Oregon white oak zone |

¹Each dichotomous key used in this guide consists of a series of paired descriptions, or couplets, describing a given forest stand. Beginning with the first couplet, read each description to determine which most appropriately describes the stand in question. At the end of each description you will find either a number, indicating the next couplet to examine, or a name, indicating the conclusion.

Environmental Setting of Western Washington



Figure 4. Mountain hemlock zone. Many picturesque timberline views in western Washington are framed by mountain hemlock — our high-elevation conifer found in the wettest and snowiest locations.

The **subalpine fir** and **mountain hemlock** zones include all of the upper treeline forests in our region. Most of the high-elevation forests in western Washington are very wet and snowy, and fall within the mountain hemlock zone (Figure 4). Only a small section of subalpine fir zone occurs in western Washington, most notably in the northeastern section of the Olympic Mountains where a significant rain shadow exists (Figure 5). The great width of the north Cascades also produces a large rain shadow near the Cascade crest where subalpine zone forests also occur.

Together, the **Pacific silver fir**, **Sitka spruce**, and **western hemlock** zones account for the majority of forested land in western Washington. These three zones are the primary focus of this guide. The Pacific silver fir zone occupies the mid- and upper montane zones of the Olympic and Cascade Mountains and the highest elevations of the Willapa Hills; the Sitka spruce zone occupies the outer coastal areas; the western hemlock zone occupies the remainder of the region.

A few exceptions are notable. Western hemlock, Pacific silver fir, and western redcedar are lacking in parts of the Puget Trough and the driest montane areas



Figure 5. Subalpine fir zone. Abundant as the dominant timberline tree in eastern Washington, in western Washington subalpine fir is mostly found where a significant rain shadow exists at high elevations, such as this scene in the northeastern Olympic Mountains.

of the rain shadows (Figure 6). Here, Douglas fir is the primary tree species and is also found uncharacteristically in the understory. These forests are included in the **Douglas fir zone** and are similar to many mid-montane forests in eastern Washington.

A seventh vegetation zone, the **Douglas fir/Oregon white oak zone**, is found in the excessively drained sands and gravels of southern Puget Sound and the Willamette Valley of Oregon. This zone is characterized by the presence of Oregon white oak (*Quercus garryana*), western Washington's most drought-tolerant tree (Figure 7). Douglas fir and Oregon white oak are found along the perimeter and scattered throughout the native prairies of the Puget lowlands, Chehalis, Cowlitz, and Willamette valleys.

Oregon white oak, with its bimodal ecological distribution, may also be found in wetlands. This key includes the Oregon ash/Oregon white oak wetland forests common in wetlands south of the Puget Sound. As an edaphic type within the larger western hemlock zone, they do not warrant their own zone.



Figure 6. Douglas fir zone. At low and mid-elevations in the rain shadow of the Olympic Mountains (see Figure 1), the Douglas fir zone occurs in the absence of western hemlock.



Figure 7. Douglas fir/Oregon white oak zone. Some of western Washington's only native prairies and oak savannas occur in the excessively drained soils of the south Puget Sound region. Limited occurrences of the Douglas fir/Oregon white oak zone are found within and around these prairies.

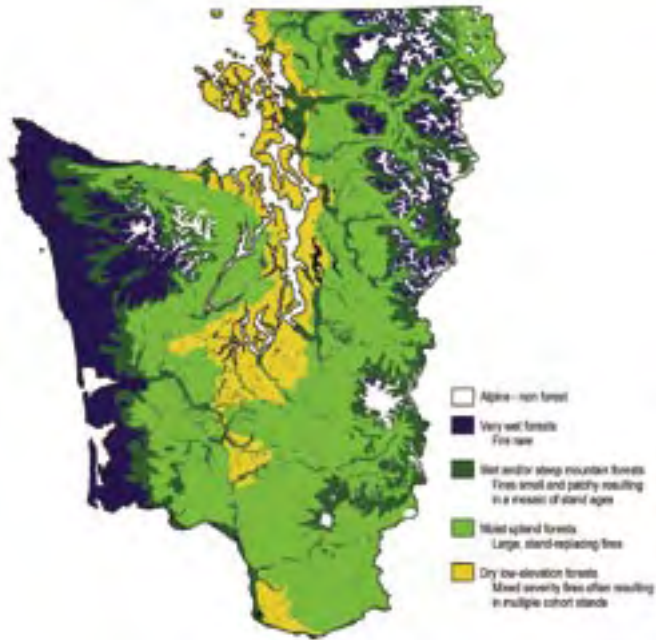


Figure 8. Pre-Euro-American settlement fire regimes in western Washington.

Fire in Western Washington Prior to Euro-American Settlement

Given the wide range in precipitation for western Washington, there is naturally a wide range in how fire has modified the environment over the centuries. Some areas near the coast or in the wettest spots in the mountains have had no fire for several thousands years. In other areas fire is common, serving to continually reset the successional clock. While the arrival of Euro-Americans in the region during the nineteenth century has had a tremendous impact on the forests of western Washington, Native Americans also modified the landscape with fire to a lesser degree. Because their occupation of the region goes back for thousands of years, however, it is difficult to distinguish between anthropogenic influences on vegetation patterns and the natural background patterns.



Figure 9. Ancient forest on the coastal plain in Olympic National Park near Lake Ozette. Western redcedar dominates the entire region with the exception of the dark-colored hills, which are populated by western hemlock.

For the period before Euro-American settlement, fire regimes in western Washington can be divided into four broad categories, based on fire frequency and severity (Figure 8). Ancient fire events may be dated by examining radioisotopes of carbon in the decay-resistant charcoal layers found in the soil. Fire is rare along the coast, as many areas show no evidence of fire for the past several thousand years. The stands located on the broad coastal plains of the Olympic Peninsula and Willapa Hills are composed primarily of western redcedar and western hemlock (Figure 9). Sitka spruce, red alder, and cascara are also common in places. While western hemlock is typically the most abundant tree species in these stands, it is short-lived in such warm, moist environments. Western hemlocks over 200 years old can be found, but invariably they have rotten centers and will not live to 300 years. In contrast, western redcedars over 1000 years old are not rare in these coastal plain forests. Some of these ancient trees are not very large, because, unlike the rich and productive soils of the nearby uplands, many areas of the coastal plain have heavily organic soils and productivity may be low (Figure 10).



Figure 10. Interior of an ancient cedar-hemlock stand near Forks. Even though the stand is ancient, the largest trees are less than 200 cm diameter. Photo: DNR/Steve Curry.

A lack of fire has also been detected in some areas of the Pacific silver fir and mountain hemlock zones. These cool, wet forests are composed of shade-tolerant species: mountain hemlock, western hemlock, Pacific silver fir, western redcedar, and yellow cedar. In the most closed sections of the forests, Pacific silver fir is usually the most abundant tree. Mountain hemlock and yellow cedar also become numerous at higher elevations near the upper tree line. The size and age records for western hemlock (290 cm diameter, > 1,238 years), mountain hemlock (189 cm diameter, > 924 years), Pacific silver fir (233 cm diameter, > 900 years), and yellow cedar (416 cm diameter, > 1,693 years) all come from these locations (Figure 11).

Although rare, fires do occur in these areas from time to time. A fire could easily start from a lightning strike along the coast during the drier summer months. Similarly, a fire burning in a river valley could travel upslope into the mountain hemlock zone during a dry year. Such fires tend to go out quickly or not burn very extensively.



Figure 11. The largest known western hemlocks grow in the cool, moist environments at high elevations with mountain hemlock and Pacific silver fir (pictured in the background). Here, the decay fungi, so aggressive at low elevations, are at a disadvantage.

Environmental Setting of Western Washington

Surrounding these areas are regions that are slightly less wet, including wetlands and floodplains nested within areas of more frequent fire (Figure 8). While these regions do have fire histories, fires are infrequent: fire return intervals are usually > 500 years. Fires in these regions are commonly small and patchy, typically spreading into this zone from adjacent, more fire-prone areas. The fires are commonly not self-sustaining and soon go out. Even so, they occur within the lifespan of Douglas fir. Most of these forests contain either a component of live Douglas fir established after a fire, or snags or logs that indicate a former presence of Douglas fir.

The bulk of western Washington is moist uplands, where large-scale, stand-replacing fires are the dominant force shaping the landscape (Figure 8). The forests created by stand-replacing fire events are the most widespread and most relevant to forestry in western Washington. This is detailed in a following section entitled *Stand development in natural Douglas fir forests*.

Since forests in the driest portions of the Puget Trough and Cowlitz and Chehalis valleys have largely been replaced or extensively modified by human developments of one sort or another, they are of limited interest in a guide to older forests. Nevertheless, fine examples of old forests still exist in these regions, such as at Point Defiance Park in Tacoma (Figure 12), Seward, Schmitz, and O.O. Denny parks in Seattle; Deception Pass State Park on Whidbey Island; and Moran State Park on Orcas Island. In these areas, charcoal is common on the bark of older Douglas fir trees, an indication they survived a previous fire event. Indeed, older stands throughout this zone consistently contain multiple age classes of Douglas fir.

Sections of this zone are much drier, located within the rain shadow of the coastal mountain ranges. As a result, stand densities, and the proportion of western hemlock and western redcedar is lower. Other sections of this zone have very dry forests resulting from the excessively-drained, gravely and sandy soils left behind by glaciers. Douglas fir is one of the most fire-tolerant trees in western Washington; with its thick bark it can often survive fires of low or moderate intensity.

Environmental Setting of Western Washington



Figure 12. Multiple age classes of Douglas fir trees within the same stand are common in the old forests within the Puget Trough. Point Defiance Park in Tacoma has trees up to 240 cm in diameter with charcoal on the bark, yet also has large and old trees with none.



Figure 13. A section of the **21 blow** with no residual canopy trees. However, the dense hemlock understory quickly responded to the removal of the canopy to form a nearly pure hemlock stand 80 years later.

Wind Disturbances

Wind is the most prevalent disturbance type in forests close to the ocean. European explorers first reported stand-destroying windstorms along the Washington coast in 1788. Since then, a dozen other hurricane-force storms have hit the coast. The two strongest of these storms were the **21 Blow** of 1921 and the **Columbus Day Storm** of 1962, each with winds recorded in excess of 240 kilometers per hour. Both of these began as tropical typhoons that strayed into our region assisted by the jet stream.

Violent winds and fires disturb forests in very different ways. Trees that survive a fire are likely to be among the largest trees in the stand — those with high crowns or thick bark. In contrast, smaller trees have a greater chance of surviving a severe windstorm: understory trees are more prone to be crushed by falling trees than blown over.

On the other hand, taller trees usually remain standing in the more common windstorms that coastal forests experience approximately once a year. Because these trees are constantly buffeted by wind, they become wind firm. Thus in common storms, it is often the intermediate canopy trees that blow over. These trees tend to grow in sheltered conditions, and the wind protection they receive from their larger neighbors is usually sufficient for them to remain standing. They are therefore less wind firm than their taller neighbors.

Each tree species responds differently to wind. Forest surveys conducted after historic storms have shown that western hemlock and Pacific silver fir are much more likely to blow over than their larger associates. Both western hemlock and Pacific silver fir carry heavy amounts of foliage, making them more susceptible to wind. Ancient western redcedars are the least likely to blow over; their wide bases and often short stature serve to increase their stability.

Even though western Washington receives major storms at approximately 20 year intervals, 100 percent canopy removal within a wind-disturbed area is uncommon. Succession after a canopy-removing windstorm proceeds differently than after fire. In most cases, many of the trees that will form the new canopy are already in place in the understory (Figure 13).

Figure 14. A generalized view of leaf photosynthesis with increasing light levels. Peak photosynthetic efficiency occurs at the saturation point.

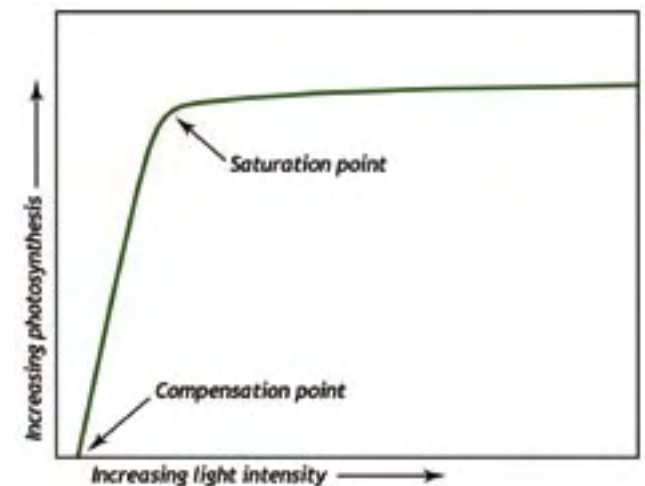




Figure 15. Leaf arrangement in response to light. The left photo is of a fully illuminated shoot from the top of a noble fir tree showing aggregated leaves and self-shading. The photo on the opposite page is a shaded shoot from the same stand with little self-shading and a very high SAR value (see page 26).

Important Information on Shade Tolerance

Shade tolerance can be thought of in two ways — actual and relative. **Actual shade tolerance** refers to the light level at which a tree can photosynthesize. At low light levels, photosynthesis may be insufficient to balance leaf respiration. With many trees, this balance, known as the **compensation point** (Figure 14), occurs at light levels of 2–3 percent of full sunlight. With light levels above this, photosynthesis increases nearly linearly up to a threshold, called the **saturation point**, at which peak photosynthetic efficiency occurs. Leaves cannot use all of the light from a fully illuminated position, so once the photosynthetic apparatus of the leaf is saturated, additional photons are converted to heat. Too much heat can be lethal to the leaf. Although the details will differ, the shape of this curve is common to all leaves.

Most trees, including our coniferous tree species, arrange their leaves differently around the stem under differing light conditions. For example, noble fir, a shade-intolerant species from subalpine forests of the south Cascades, displays dramatic differences in shoot morphology between those growing under fully sunlit



conditions and those found in the shade (Figure 15). Leaves at the top of the tree receive much more light than they can possibly use and aggregate their leaves to provide self-shading. The leaves are oriented in such a way that no individual leaf is fully illuminated. In contrast, leaves in the deep shade exist in lighting conditions well below their saturation point, so aggregation and self-shading would not be beneficial. Instead, heavily shaded leaves are often oriented so that there is maximum exposure to the few photons that do reach them — they minimize self-shading and orient themselves perpendicularly to the sun’s rays to maximize light interception. In most of our old-growth forests, only 1–5 percent of light reaches the ground, and most of this arrives in the form of diffuse light. Many of our understory species, such as wood sorrel (*Oxalis oregana*) or vine maple (*Acer circinatum*), orient their leaves parallel to the ground to maximize exposure to the small amount of diffuse light.

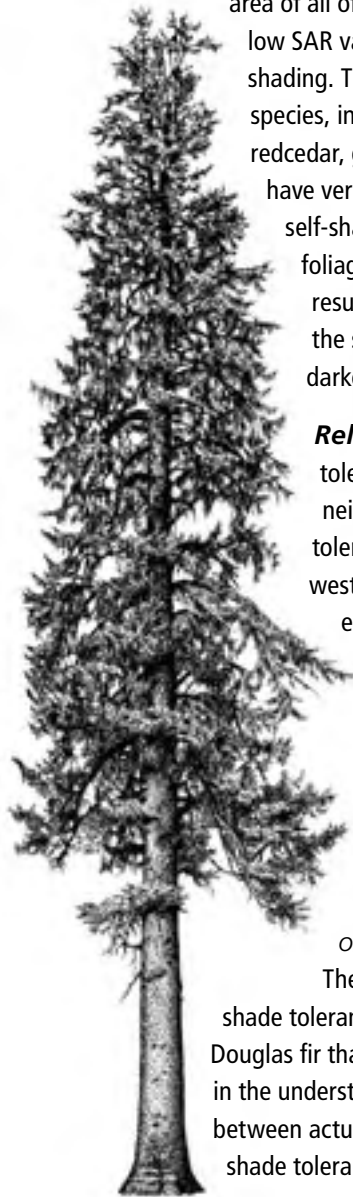
Each species varies with respect to its ability to aggregate and disperse its leaf orientation. Pines, in general, lack the ability to orient their leaves perpendicularly to the sun’s rays or to minimize self shading. As a result, leaves from pines cannot

exist in low-light levels. Firs, in contrast, are quite adept in this regard. A common measure of the ability of a shoot to maximize exposure is known as the Silhouette Area Ratio (SAR). SAR is the ratio of the projected area of a shoot to the projected area of all of the leaves individually. Pines typically have

low SAR values of 0.3–0.5, indicating a high level of self-shading. The shade shoots of our most shade-tolerant tree species, including western hemlock, Pacific silver fir, western redcedar, grand fir, and Pacific yew (*Taxus brevifolia*), can have very high SAR values (0.95–0.99), indicating almost no self-shading. Shade-tolerant species are thus able to hold foliage deeper into their crowns than other trees, often resulting in deeper, denser crowns. As a consequence, the shade cast by shade-tolerant trees is often much darker than that of their shade-intolerant associates.

Relative shade tolerance refers to the shade tolerance of one tree species when compared to its neighbors. Douglas fir, for example, is not shade tolerant at all when growing with western hemlock and western redcedar. In such cases, its foliage will only exist in areas with high light levels, which in an older forest will be the upper canopy. All of the lower canopy levels, including regenerating trees in the understory, will be occupied by the leaves of shade-tolerant tree species.

In eastern Washington, however, where Douglas fir commonly grows with ponderosa pine (*Pinus ponderosa*) and western larch (*Larix occidentalis*), it behaves as a shade tolerant species. These species of pine and larch have an even lower shade tolerance than Douglas fir. Thus, in these forests, it is the Douglas fir that occupies the lower canopy levels and regenerates in the understory. For these reasons, it is important to distinguish between actual and relative shade-tolerance when discussing the shade tolerance of tree species.



Stand Development in Natural Douglas Fir Forests

The stand developmental sequence as presented in Franklin et al. (2002) provides an introduction to the concept of forest disturbance and succession. This developmental sequence, while simplistic, was the most common in the forests of western Washington prior to Euro-American settlement and provides a useful framework when considering the many divergent scenarios.

Disturbance and legacy creation

The first stage in a developmental sequence is the disturbance itself. For the purposes of this simplified discussion, disturbances are limited to stand-replacing events that allow a new cohort of trees to establish. In our region, the three primary stand-replacing disturbance events are crown fire, catastrophic blowdown, and timber harvest. While the canopy of the previous stand is removed under each of these scenarios, in most respects these disturbances are very different from each other.



Figure 16. Aftermath of a catastrophic wildfire. Note that besides killing the trees, the fire did not consume much wood. The trees were alive and thus full of water. Subsequent fires, if they occur, will burn up much of this wood.

Stand Development in Natural Douglas Fir Forests



Figure 17. Living legacies. Survivors after a catastrophic wildfire are often found in drainages or other moist areas. These surviving trees are the primary seed sources for the next stand.



Figure 18. Blow-down. All of the organic matter from the killed trees — leaves, branches, stems, and roots — remain on the site. Some of the understory trees will survive to make up part of the next stand.
Photo: Jerry Franklin

Crown fires will kill the previous stand of trees, but will often only consume a small proportion of the total wood from the previous stand. Landscapes destroyed by wildfire are often a sea of snags in a post-fire condition (Figure 16). Individual trees in stream drainages or other wet or protected areas will often survive even

Stand Development in Natural Douglas Fir Forests

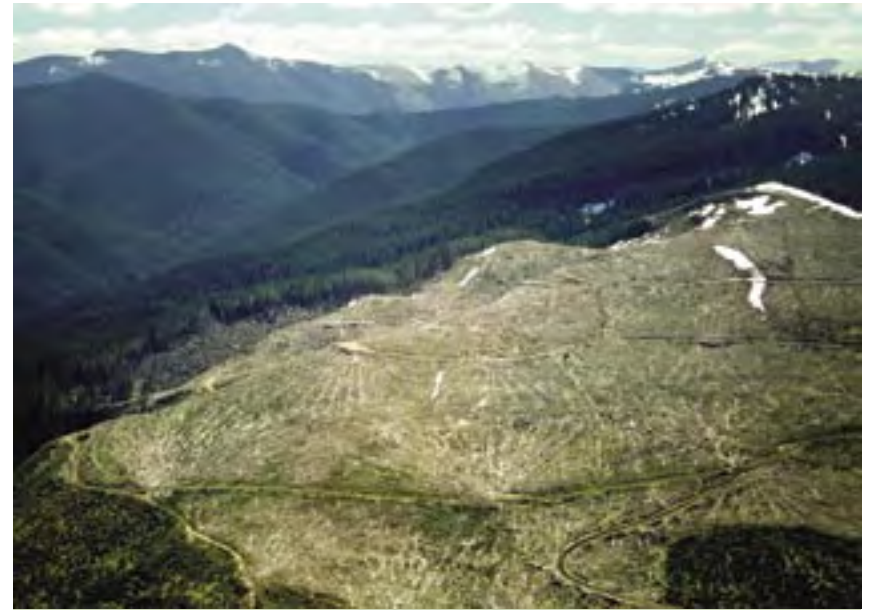


Figure 19. Clearcutting was the dominant silvicultural technique used through most of western Washington's timber harvest history and is the origin of many of today's stands. Apart from the stumps, foliage, and small branches, little organic matter remains in this large industrial clearcut. Modern silvicultural techniques recognize the value of retaining live trees, snags and logs (biological legacies).

severe fire events (Figure 17). The individuals that manage to survive are typically the larger trees, as the smaller individuals are more susceptible. Individual large trees that have survived the fire, as well as snags and logs on the forest floor, are termed **biological legacies**.

Catastrophic windstorms, in contrast, leave virtually all of the organic matter from the previous forest (Figure 18). This disturbance type tends to work from the top down, blowing over the canopy trees. Survivors from large wind events are often the small understory trees that were not crushed by falling trees. This cohort of surviving understory trees is usually the source of canopy trees for the subsequent stand, which differs from other developmental sequences in that it consists primarily of shade-tolerant species. In western Washington, this disturbance type is most common in coastal areas.

Figure 20
Cohort Establishment



After Wildfire

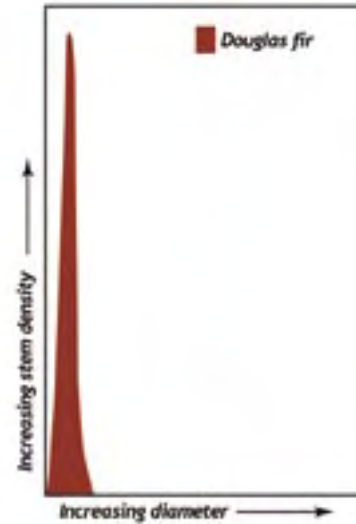


After Blowdown



After Clearcutting

Diameter distribution



Although it is only one harvest technique of several employed in modern silvicultural management, clearcutting was the dominant harvesting technique practiced in western Washington for many decades. As such, it constitutes an important part of the disturbance history of many post-Euro-American settlement stands. Traditional clearcutting leaves very little from the previous stand—no live trees and very few, if any, snags. The few logs that remain tend to be heavily decayed or small in diameter (Figure 19). During the late nineteenth and early twentieth centuries, these areas were allowed to reseed themselves naturally from surrounding forested areas. Since the 1960s,



Figure 21. The Yacolt Burn. The view from Lookout Mountain into the headwaters of the East Fork Lewis River shows areas that have burned as many as four times since 1902. Some areas still do not support trees.

Stand Development in Natural Douglas Fir Forests

clearcut harvest units have generally been replanted within a year or two after harvest. Stands resulting from natural reseeding are patchier and may take longer (in places) to reach canopy closure.

Cohort establishment

Cohort establishment is the initiation of a new set of trees that forms the basis of a future forest (Figure 20). Conditions for cohort establishment following a fire vary tremendously between sites, depending on the extent and severity of the fire. Very large fires may leave limited seed sources with which to repopulate the area. Smaller fires will not usually create this problem. Even stands subject to very large fires can regenerate quickly if there is a small but diffuse population of surviving

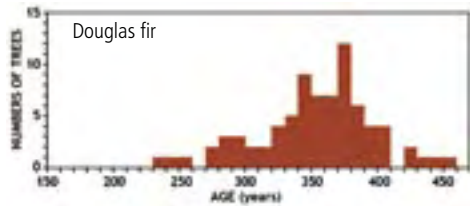


Figure 22. Diameter distribution of trees in the old-growth forest at the Wind River Experimental Forest in the south Cascades. Note the wide age range of the canopy dominants. Modified from Franklin and Waring 1980.

Figure 23 Canopy Closure



Stand Development in Natural Douglas Fir Forests

trees. The 1902 Yacolt Burn, one of the largest recorded fires in western Washington, regenerated very quickly.

Repeat disturbances, such as subsequent fires, confound regeneration on several levels:

1. The few surviving trees that were seed sources may be killed.
2. The dense crop of newly regenerating trees will most likely be killed.
3. More of the biological legacies and residual organic matter will be consumed.

Indeed, all of these processes will commonly take place in areas that burn repeatedly. For the sake of simplicity, and to develop the concept of stand development, this section will only examine in detail the scenario in which the initiating disturbance is wildfire, as depicted in the upper panel of figure 20.

Large sections of the Yacolt Burn did re-burn. Indeed, some areas experienced as many as four fires during the first half of the twentieth century. 100 years later, some of these areas still have not fully regenerated (Figure 21). This scenario was probably not unusual in western Washington prior to Euro-American settlement, particularly in the south Cascades. With witness records of this burn and all of the

subsequent fires, we are able to discern the different age classes and their boundaries. As time passes, however, the slight differences in ages between neighboring cohorts become increasingly difficult to distinguish. In addition, as the stand ages, fewer individuals from the original cohort remain. After several centuries, only a small selection of trees remains from the various disturbance and succession events. In the distant future, an examination of trees in stands that originated from multiple fires might only indicate that the dominant canopy trees have a wide age range.

This may have been the case in the old-growth forest that was consumed by the Yacolt Burn. An examination of the old forests adjacent to the Yacolt Burn at the Wind River Experimental

Diameter distribution

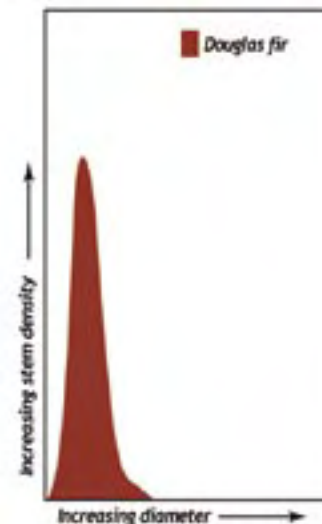


Figure 24
Biomass Accumulation/Competitive Exclusion



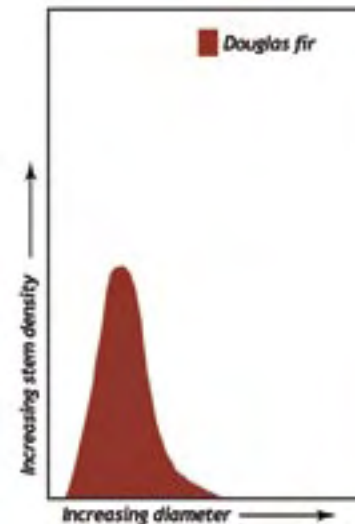
Forest shows this pattern of a wide variety of age classes in the dominant canopy trees (Figure 22). After several centuries it is difficult to tell whether this pattern was created by multiple fires or by a single, vast fire followed by slow colonization. The nearby situation of the Yacolt Burn may provide important clues.

Canopy closure

Canopy closure between two trees occurs when the two crowns begin to touch. While this can take place within a single growing season, at the stand level it may take decades, as determined by the initial spacing of the young trees (Figure 23). Modern planting methods attempt to minimize the time for this process to occur, but natural processes are much more irregular. Natural colonization is random, and at times aggregated. In these situations, canopy closure may occur in one spot decades before it does only a short distance away. Large piles of woody debris, competition from dense shrub layers, or exposed soils can all create situations that delay tree seedling establishment.

More dramatic environmental changes occur during this stage than in any other. During this relatively brief period, the area goes from open to closed canopy

Diameter distribution



— from full sun to deep shade. Near the ground surface, temperature becomes highly moderated, and relative humidity increases. Many plant species, adapted to growing in the high-light environment of the early-colonizing stand, may perish in the deep shade imposed by the overlapping tree-crowns.

Biomass accumulation/ Competitive exclusion

For several decades following canopy closure, until the stand reaches maturity, it will be in the biomass accumulation/competitive exclusion stage (Figure 24). In western Washington, this may take 30-40 years on highly productive sites such as in the Willapa Hills, or nearly 100 years on poorer sites in the Cascades.

At this stage, it is characteristic for a site to be completely dominated by trees. The trees can grow rapidly, converting a shrub field of tiny trees into a tall forest. Standing biomass increases by many orders of magnitude, yet recruitment of new individuals is limited due to the deep shade at the forest floor. Depending on initial stem densities, density-dependant mortality will also be prevalent during this stage. If the initial stocking of trees was high, many of the thinner/shorter stems will be overtopped and perish. If, however, the initial stocking was low, this type of mortality may be limited. These dead, small-diameter trees can often be quite abundant, depending on initial stocking levels, and appear to be strewn about like jackstraws. Small-diameter logs and snags decay very rapidly and contribute little habitat value to species that require coarse woody debris.

As the trees grow taller, many shade-intolerant tree species (such as Douglas fir) will shed their lower branches as they die in the deep shade cast by branches above them. Crown depths may not change appreciably during these several decades. Crown bases will rise at the same rate as height increases, leaving bare trunks below the living crown.

Figure 25
Maturation I: Pre-Euro-American settlement



The forest understory is at its most depauperate level during this stage. Deep shade is ubiquitous due to a dense, upper canopy layer. It is common for such stands to have only a thin layer of mosses with widely scattered shade-tolerant understory plants.

Maturation I: Forests originating after Euro-American settlement

At maturity, trees have reached 60-70 percent of their ultimate height. Further height growth proceeds more slowly than it did in the earlier stages of development. Mortality of the slower-growing, overtopped trees continues, as does the height differentiation of the remaining dominant trees (Figure 25). Since taller trees move more in the wind, the crowns of adjacent trees occasionally bump into each other, causing twig breakage at the branch tips. Tree crowns become more individualized to their own space, rather than intermingling with neighboring trees as they did when younger.

All of these factors combine to make the canopy less dense and to allow more light to reach the ground surface. While still very dark, the increased light levels

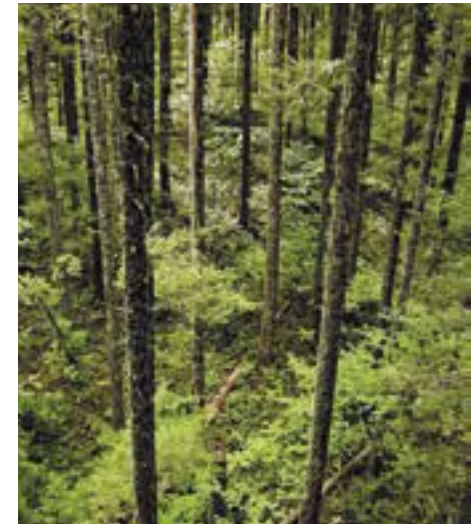
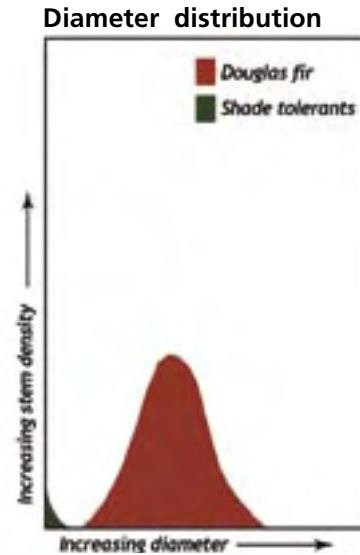


Figure 26. The Bole Zone. Below the main canopy and above the understory vegetation is a section with no leaves — just the trunks of canopy trees.

in the understory soon reach the point at which shade-tolerant plants can begin to grow, including tree species such as western hemlock. The rates at which new plants colonize the understory will naturally depend on many factors, including the proximity of seed sources. If the initial disturbance was very extensive, hemlock seedlings may not colonize for many decades, even if conditions are favorable.

The middle canopy will be completely free of foliage, and will consist only of the trunks of canopy trees (Figure 26). This area, known as the **bole zone**, is most dramatic at this stage.

Maturation II: Forests originating before Euro-American settlement

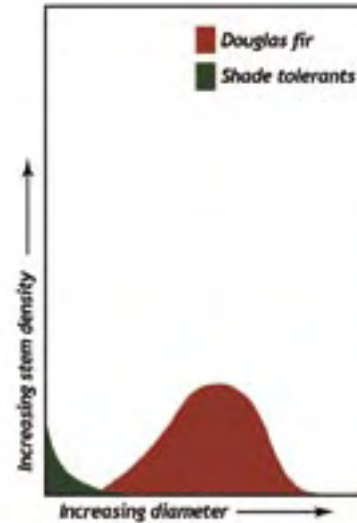
Approximately 80-90 percent of the height growth of the stand is completed by this stage. This is the last stage at which trees exhibit the pointed tops characteristic of juvenile stands (Figure 27, Figure 28). The spatial, competition-based mortality process that was dominant up to this point now shifts to a mortality process driven by fungi, wind, and insects. Of these agents, fungi are the more important in western Washington. Decay from root and stem rots becomes

Figure 27
Maturation II: Pre-Euro-American settlement



Figure 28. View of the top of the canopy of a 160 year-old stand in the south Cascades. Note the model-conforming tops of a stand still growing in height.

Diameter distribution



the dominant mortality agent from this stage forward. While wind is an important component of mortality near the coast, many mortality events that may at first appear to be uprooting or stem-snap caused by wind are instead the result of trees already significantly weakened by decay fungi.

At this stage, the understory is often fully recovered and remains so for all subsequent stages. Hemlock and other shade-tolerant tree regeneration, depending on seed source availability, is often quite abundant. The amount of woody debris in the stand is at a minimum during this stage: most of the wood left over after the initial disturbance has decayed, and the current stand has yet to produce woody debris of a significant diameter.

The bole zone begins to be repopulated with foliage from a new source, epicormic branches (Figure 29). Epicormic branches start from dormant buds on the cambium, not from terminal buds. These often occur at old branch wounds or other places where the bark is very thin. Whereas the original branch died due to low light levels, the surrounding stand continues to grow and change, allowing more light into lower levels of the canopy. An epicormic branch may form and expand into this new light environment. A more detailed discussion of this phenomenon is found in the section on Douglas fir (Page 45).

Vertical diversification

Vertical diversification is the first stage of old-growth. The shade-tolerant trees are now continuously establishing in the understory and have expanded to occupy the areas below the crowns of the main Douglas fir canopy (Figure 30).

Epicormic branching is found on many of the canopy trees, effectively lowering their crown bases (Figure 31). This crown deepening permits trees of the main canopy to greatly increase the amount of foliage they carry, thus allowing for



Figure 29. Epicormic branching. Branches can form below the main crown at old branch wounds when light levels increase in that section of the stem.

Figure 30
Vertical Diversification



Figure 31. Crown deepening through epicormic branching.

increased growth. Height growth, however, proceeds very slowly; most of this new growth goes into wood production and below-ground processes. Many of the Douglas firs in the main canopy become very large during this stage.

Mortality will continue as decay and other agents kill occasional trees. The snags and logs produced during this stage, however, are now large enough to have a significant lifespan and begin to accumulate.

Horizontal diversification

Decadence of the Douglas fir canopy continues, with significant mortality events centered on large individual trees. Many of these large trees will die standing; others will fall, often taking one or several smaller neighboring trees down with them. The gaps created by the dead trees open up the understory to higher light levels and increased nutrient availability. This pattern of gap formation, followed by infilling from trees in the understory, creates the horizontal diversification of this stage in stand development (Figure 32). In addition, mortality is higher near pre-existing gaps; gap expansion accentuates this horizontal variability. Sections of the stand are still dominated by large Douglas firs, and older gaps may now contain dense regions of hemlock regeneration.

In western Washington, this stage often begins when the stand is between about

Diameter distribution

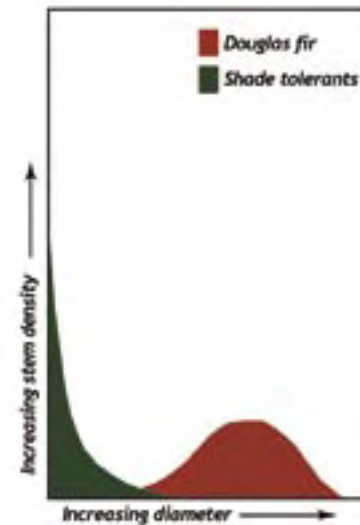


Figure 32
Horizontal Diversification



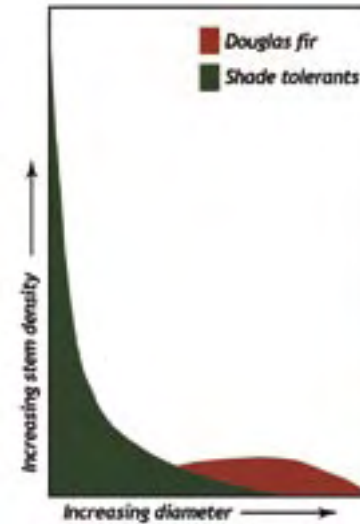
300 and 400 years old, depending on site location and productivity. This is the classic stage of old-growth forest that comes to mind for many people: towering Douglas firs with hemlocks present in all size classes, from juveniles to large canopy trees (Figure 33). Since Douglas fir can easily live for 600-800 years, and occasionally 1,000-1,300 years, this stage may last for many centuries.

Pioneer cohort loss

The final stage of stand development begins when the last of the Douglas firs dies. At this point, none of the trees in any of the canopy levels originated immediately after the initial disturbance (Figure 34). The structural presence of the giant Douglas firs extends for several centuries after the last tree dies: snags can last for a century or more, and logs are often still recognizable for several centuries.

The word climax is often used to describe forests dominated by western hemlock and western redcedar and falsely implies an endpoint to forest succession. The phrase is discouraged by many ecologists, as it represents an idea, not reality. Succession does not stop when it reaches this point. The term steady-state more aptly describes this condition and implies variation within a final equilibrium. Even

Diameter distribution



this term, however, has shortcomings given the long lifespan of some trees (> 1000 years). At this time scale, the climate itself is continually changing. A stable condition in one millennium will be different during the next—even if the same species are present.

This final stage of the stand developmental sequence is rarely ever reached. It is likely that some event will occur to divert a forest from this developmental trajectory. The most common is another catastrophic wildfire, which serves to reset the developmental sequence to the beginning.



Figure 34
Pioneer Cohort Loss

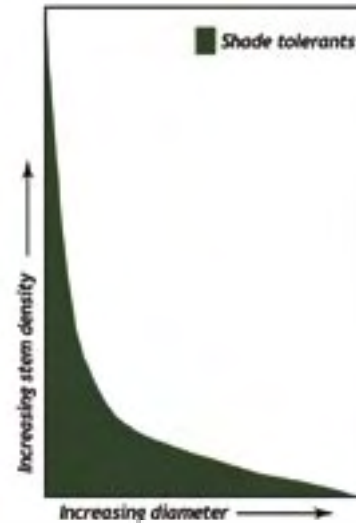


Other scenarios

The idealized situation presented above, while not uncommon, has countless variations. For example, the catastrophic wildfire scenario assumes that all of the biological legacies are dead. Even in the Yacolt Burn, trees survived in ravines and around the edges of the burn. In wetter environments, such as the Willapa Hills, western Olympics, or North Cascades, the likelihood increases that a stand-replacing fire will not kill every tree. Even though current belief suggests that wetter forests exist in a stand-replacing fire regime, the chances are high that *some* trees will survive as living biological legacies.

At the drier end of the spectrum, such as sections of the Puget Trough located within a rain shadow, the chances that individual trees will survive a fire are also high. Low stand densities combined with the presence of thin and dry soils allows some trees to survive with only minimal charring. A newly developing stand containing a few surviving trees from the previous stand would be described as an even-aged stand with surviving biological legacies. If enough trees survive, the subsequent stand would be termed a two-cohort stand. Fire boundaries are sometimes fairly abrupt, the result of a landscape feature capable of stopping a

Diameter distribution



fire, such as a ridgetop or a stream crossing. In most situations, however, the boundaries will be a gradual change from a burned to an unburned area. The edge environment in these situations is termed a **feathered edge**. As a new cohort of trees develops following this type of disturbance, several different stand structures will be present over a relatively short distance (Figure 35). At one end of a feathered edge will be an even-aged stand, followed by an even-aged stand with biological legacies. In the central portion of the feathered edge will be a two-cohort stand, then an old forest with a minor underburn, and finally an unburned forest.



Figure 35. A feathered edge. On the right side is an unburned old-growth forest, and on the left is an 80 year-old stand. The boundary between the two stand types is very irregular.

Key to Stand Development Stages in Western Washington for Western hemlock, Sitka spruce, and Pacific silver fir zones.

While this key has been tested in a wide variety of stands in western Washington, there may exist stands that do not key out properly. In these situations, relax the percentage values slightly and retry.

1. Cut stumps present throughout stand	2
No cut stumps. Natural forest*	3
2. Stumps cut by chain saw (short stumps – planted seedlings)	3
Stumps cut by hand saw (tall stumps, springboard notches – naturally reseeded)	3
3. Legacy trees – trees considerably older/larger than the others, or a subset of trees with charcoal on bark present.	4
No legacy trees	6
4. Legacy trees < than 20 % canopy cover. Stand with legacies 6**	
Legacy trees ≥ 20 % canopy cover Two cohort stand	5
5. Each cohort must be keyed out separately	
Older cohort	10
Younger cohort	6
6. Douglas fir (live or dead) ≥ 25 % of main canopy stems	7
Douglas fir < 25 % of main canopy stems	15
7. Young, planted Douglas fir trees < 10 years old. Cohort establishment phase	
Not as above	8
8. Young, planted Douglas fir trees 5-20 years old, abundant shrub cover	
. Canopy closure	
Not as above	9
9. Douglas fir trees, not yet overhead, overlapping crowns, shrubs present ≥ 15 %	
. Canopy closure	
Not as above	10
10. Douglas fir canopy overhead, self pruning, scant understory	
. Biomass accumulation/stem exclusion	
Not as above	11

11. Douglas fir overhead, self pruning; western hemlock, western redcedar, or Pacific silver fir present only in understory	
Maturation I—Forests originating after Euro-American settlement***	
Not as above	12
12. Douglas fir overhead, epicormic branches present, western hemlock, western redcedar, or Pacific silver fir seedlings, saplings, or small poles present, yet no main canopy trees	
Maturation II — Forests originating before Euro-American settlement***	
Not as above	13
13. Douglas fir upper canopy, western hemlock, western redcedar, or Pacific silver fir abundant and in many height classes, including main canopy	
. Vertical diversification	
Not as above	14
14. Douglas fir canopy patchy, large canopy gaps present, western hemlock, western redcedar, or Pacific silver fir abundant in all canopy levels	
. Horizontal diversification	
All Douglas fir trees dead (snags or logs), western hemlock, western redcedar, or Pacific silver fir abundant in all canopy levels Pioneer cohort loss	
15. Sitka spruce, noble fir, or red alder ≥ 25 % of main canopy stems	
. use	
steps 7-14, replacing Douglas fir with Sitka spruce, noble fir, or red alder	
Sitka spruce, noble fir, or red alder < 25 % of main canopy stems	
. use steps 7-14, replacing Douglas fir for	
western hemlock, western redcedar, and Pacific silver fir collectively****	

* Certain areas in the Puget Basin were cleared of stumps during the early days of Euro-American settlement. While very few of these cleared areas have been reconverted to forests, the occasional stand may be encountered.

** For Douglas fir legacies, see the Rating System for Aging Legacy Trees on page 64. For Sitka spruce, western hemlock, or western redcedar legacies, use visual indicators under their individual sections.

*** Key was written in 2007. While stands keying out to Maturation I and II will be valid in any year, their relation to Euro-American settlement will not.

**** The horizontal diversification stage in this sequence is equivalent to the pioneer cohort loss stage of both the Douglas fir and Sitka spruce sequences.



Figure 33. Classic old-growth. Interior of a 600+ year old stand near Mount Saint Helens showing a diversity of tree sizes and spatial heterogeneity.

Douglas fir (*Pseudotsuga menziesii*)

Douglas fir is the largest and tallest member of the pine family. Living trees have been documented up to 485 cm in diameter, up to 99.4 m tall, and with volumes up to 349 m³. Even larger and taller trees once existed in western Washington. It is also the most widespread of all western trees. It can be found growing from southern Mexico to central British Columbia (a distance of 5,000 km) and from Colorado to the coast (another 1,600 km). Even in western Washington, it grows in all but the wettest locations – anywhere with a fire history (Figure 36). Throughout much of its native range in the Rocky Mountains, it has high relative shade-tolerance, capable

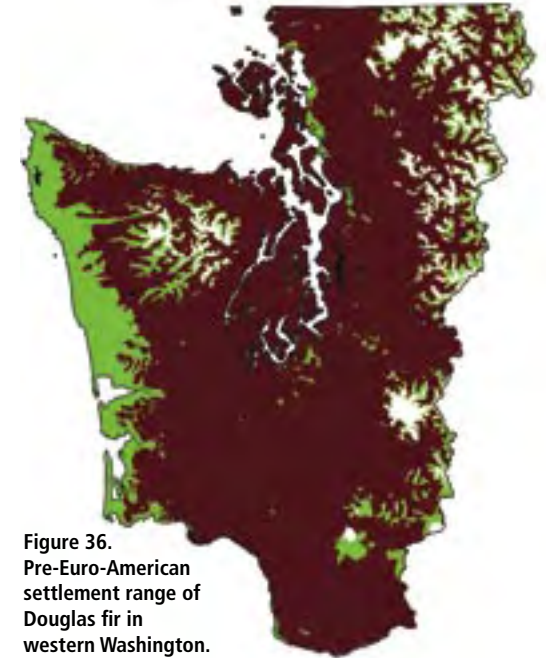


Figure 36. Pre-Euro-American settlement range of Douglas fir in western Washington.

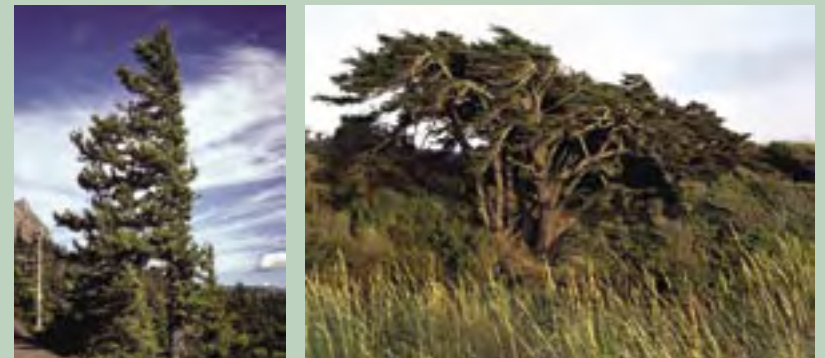


Figure 37. Left: Windswept Douglas fir at 1500 m near timberline on Hurricane Ridge in Olympic National Park. Right: Windswept Douglas fir at sea level at Point Wilson near Port Townsend

Douglas fir

of regenerating in the understory of other tree species (primarily pines). This subspecies is called *Pseudotsuga menziesii glauca*. The coast form, which grows from Vancouver Island south into the Sierra Nevada of California, is subspecies *menziesii*. This subspecies behaves largely as a long-lived pioneer tree, due in part to the tree species with which it is found growing, and the higher productivity and denser forests found along the coast,.

This great adaptability is well displayed in the forests of western Washington. It can be found windswept, growing at 1,500 m elevation along the eastern ridges in Olympic National Park, and just a few kilometers away, windswept again, along the shores of the Straits of Juan de Fuca (Figure 37).

A generalist species, Douglas fir grows in a wide range of habitats and assumes a wide range of identities. Like many tree species, size and age are poorly correlated in Douglas fir. It can become a large tree in just a few decades, or grow for centuries and still remain small (Figure 38).

The wood of Douglas fir is considered intermediate in terms of decay resistance. Species such as western redcedar or coast redwood (*Sequoia sempervirens*)



Figure 38. Poor correlation between size and age in Douglas fir. Left: 80 year-old tree growing on a productive site in the Willapa Hills is already 130 cm in diameter. Right: 400 year-old trees on a poor site in the south Cascades. Center tree is only 61 cm in diameter.

Douglas fir

are far more decay resistant, while Sitka spruce or western hemlock are far less resistant. Decay resistance helps this species live to great age; trees 600-800 years old are not uncommon in certain parts of its range with long fire return intervals. Trees 1,000 years or older have been recorded from several parts of its range, including several individuals between 1,300 and 1,400 years old.

Certain characteristics of Douglas fir change predictably during its lifespan, including bark characteristics, epicormic branching in the lower crown, and tree shape and crown form. The next sections will examine these in detail.

Bark characteristics

Douglas fir is probably the most fire-resistant of all the trees native to western Washington, due largely to the protective bark that it develops as it ages. Old trees have very coarse and rugged bark, which occasionally can reach a thickness of 35 cm. The thin bark of young trees begins to thicken and develop vertical fissures as trees mature. For the first 100-200 years, the bark is hard and boney, and usually brown to gray (Figure 39). At some locations within western Washington, crustose lichens or mosses may adorn the bark at this stage. This is the most common



Figure 39. Bark of two trees from the south Cascades. Left: 100 years. Right: 150 Years



Figure 40. The 1902 Yacolt Burn stand. The hard, boney bark of the densely-stocked stand is evident. Crustose and fruticose lichens adorn the bark.



Figure 41. A 170 year-old stand in the Hoh Rain Forest. Trees are very large for their age, but still have the hard bark of a mature stand. Mosses, rather than lichens, grow on the bark.

condition of many of our second-growth forests, whether they developed naturally or following harvest (Figure 40). Even on productive sites, where Douglas fir trees can become very large at maturity, the characteristic younger bark appearance remains (Figure 41).

It is often difficult to assess the ages of trees in late maturity and in the vertical diversification phase. At the stand level, all of the characteristics of an old-growth forest may be present, including large trees, logs, snags, and a diversity of canopy heights within the western hemlock community (Figures 42 and 43). With the exception of the forest floor bryophytes, all of the green in Figure 42 is hemlock foliage, even though the view of trunks is completely dominated by Douglas fir. These trees are 55-70 m tall, and they have very little foliage below 30 m. Even these large Douglas firs share many characteristics with younger trees, including crown characteristics and youthful bark. The colorful, flakey bark of older trees begins to appear near the tree base, which is what people quickly see when walk-



Figure 42. A 280 year-old stand at Mount Rainier National Park. The bark is becoming more colorful and flaky near the base of the tree, but branch wounds are still evident.



Figure 43. A 330 year-old stand in the south Cascades. Colorful, flaky bark extends up the stem; branch wounds no longer evident. Tree in front center is a western hemlock.

ing around in such a forest. An inspection of the tree bole, however, reveals that the harder bark of a younger tree is still present for most of the height of the tree.

Bark grows outward from the cambium; wood is formed on the inside of the cambium. As the tree grows, new bark forms underneath older bark, forcing it outward. The bark develops fissures in some trees as it expands, since the outer layers of bark were formed when the tree diameter was smaller. On trees with thick bark, the outermost bark is the oldest (Figure 44). Thin barked trees either do not make very much bark each year (alders) or have bark that exfoliates regularly (spruces). Douglas fir produces large amounts of bark which it retains it for a long time. This is characteristic of many fire-resistant tree species. Many older Douglas firs in the Puget Trough have charcoal on their outer bark, an indication that they survived a previous bout with fire (Figure 45).

The final stage of bark development in Douglas fir is characterized by the development of the colorful papery bark of an ancient tree (Figure 38 – right). At this stage



Figure 44. Close up of a 250+ year-old tree in the Puget Trough. Note thick bark but the color is still the brownish-gray of youth. On a few of the outermost bark flakes, the smooth, juvenile bark has yet to be shed.



Figure 45. A 300+ year-old tree in the Puget Trough. The hard, bony bark of youth is now completely vanished and colorful flakey bark is beginning to appear. Also note the charcoal — which usually indicates the presence of more than one age class of Douglas fir.

the bark can take on many different appearances, depending on exposure, lean, and neighboring trees. Since it is soft and papery, it can easily come off in sheets, as illustrated by the bark on a leaning tree. Over the centuries, small branches, leaves and other small bits of debris are continually shed from the canopy during storms or other events. On a leaning tree, the upper surface of the bark is exposed to this constant rain of debris, gradually sloughing off the outermost ridges of bark and creating a smooth surface (Figure 46). The bark is not damaged by this process; only the outermost ridges of bark, produced centuries earlier, are removed. The hard bark of youth is not always shed when the softer, papery bark is produced. On protected locations, such as on the underside of a leaning tree, the bark can remain very thick (Figures 46 and 47).

Lower crown characteristics

The growth of Douglas fir is whorl-based, like that of many conifers. Whorl-based growth occurs at the end of the growing season when the terminal leader pro-



Figure 46. Leaning 600+ year-old tree displays the two major bark types on old Douglas firs. The protected side has very thick bark from centuries of accumulation. The exposed side is smooth. It still has plenty of thickness to protect the tree, it has just lost the outermost ridges.



Figure 47. The protected side of a very large tree showing the 30+ cm bark thickness that they can occasionally obtain.

duces several buds at the tip. One of these buds will be the new terminal leader for the next growing season; the remainder will be branches. Pines, firs, spruces, and Douglas firs all share this pattern (Figure 48). Since the original branches are formed at the terminal leader, their pith is directly connected to the pith of the trunk. The trunk has virtually no diameter when this occurs; hence original branches remain perpendicular to the trunk, even as the trunk gets larger. Since this pattern repeats every year, the distance between whorls corresponds to one year of tree growth. Trees that maintain this morphology are termed **model conforming**, since they are following their architectural model of growth.

In Douglas fir, the lower crown begins to recede once a stand has achieved canopy closure. The lower branches die when they become too heavily shaded. Once dead, they often rot at their base and drop off the tree, leaving just a small scar in the otherwise typical bark (Figure 49, Figure 38 left). If shading occurs rapidly and many branches die at once, these stubs may be visible in groups for



Figure 48. Whorl-based growth. Easily visible behind Karl are whorls of 4-6 branches coming out of the tree at the same height. This pattern is repeated every 80 cm or so in this tree, which was the annual height growth of the tree when these were formed.

many years, radiating around the stem (Figure 50). Ultimately, these will also drop off and their presence will be masked years later by the continually expanding bark. The complete masking of these patterns, however, may take anywhere from several decades to more than a century. During that interval, the bark will be thinner at these spots than in the surrounding areas. If changes occur, such as the opening up of the canopy during maturation, epicormic branches may begin to form at some of these old wounds.

Since epicormic branches start from dormant buds located on the cam-



Figure 49. Whorls of branch wounds still visible below the main crown in this 150+ year-old tree.



Figure 50. Stubs from dead branches being retained below the main crown in this 200+ year-old tree.

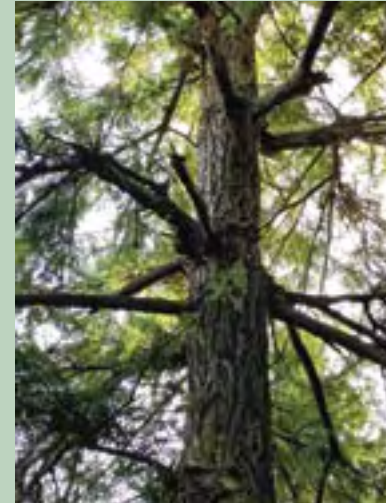


Figure 51. Epicormic branches in the lower crown of a 250+ year old tree showing the haphazard and often tangential direction they take upon leaving the trunk.

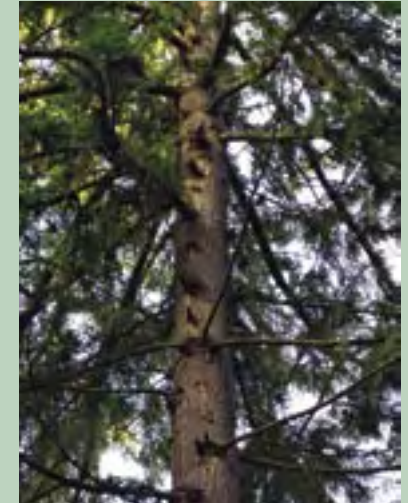


Figure 52. Lower crown of a 200+ year-old tree showing large original branches at the top of the picture and epicormic branches at the crown base.



Figure 53. A massive, radiating epicormic branch system on a giant tree.



Figure 54. A small secondary trunk emerging from a large epicormic branch system.

bium on the outside of the trunk, their growth is not restricted to be perpendicular to the bole. Indeed, since these new branches are responding to increased light levels, they will often grow every which way, and may be completely tangential to the trunk (Figure 51). As light conditions in the lower crown improve due to further canopy openings, more and more epicormic branches may be produced. Trees at late maturity or in the vertical diversification phase are often composed of an upper crown of original branches and a lower crown composed of the stubs of dead original branches surrounded by many younger epicormic branches (Figure 52).

Since it is uncommon for very old trees to grow appreciably in height, they do not produce any more original branches. Instead, existing branches, either original or epicormic, are maintained through the process of within-branch epicormic shoot production. This process occurs at the branch level, not the tree level. The individual branches can reach massive proportions in these old trees (Figure 53), often producing secondary trunks of their own (Figure 54).

Crown form and tree vigor

As a Douglas fir tree ages, it transforms itself from a simple, whorl-based growth form, to a highly individualistic shape. The individuality is due in part to the long lifespan of the species. As time proceeds, shading from neighbors, damage from storms or falling trees, the effects of decay, and differences in their specific growth environments all combine to make each tree unique.

In homage to the ponderosa pine crown classes developed by Keen (1943), crown profiles of Douglas fir at four ages (1–4) and four vigor classes (A–D) for western Washington forests are presented in Figure 55. Trees depicted at the left of the drawings (A classes) are the most vigorous, with decreasing vigor proceeding to the right. These are presented to a unified scale in Figure 55, and on the following pages are at different scales with approximate heights and ages for the four series. Not all of the trees in one series will make it to the next series. For example, competition-based mortality will ensure that most of trees in classes 1C and 1D do not make it to the next stage.

Vigor can be thought of as how much leaf mass there is compared to how much respiring tissue the tree has. Class A trees all have large amounts of leaf mass and represent rapidly growing trees. In contrast, class D trees have low amounts of

Figure 55. Crown form and tree vigor.

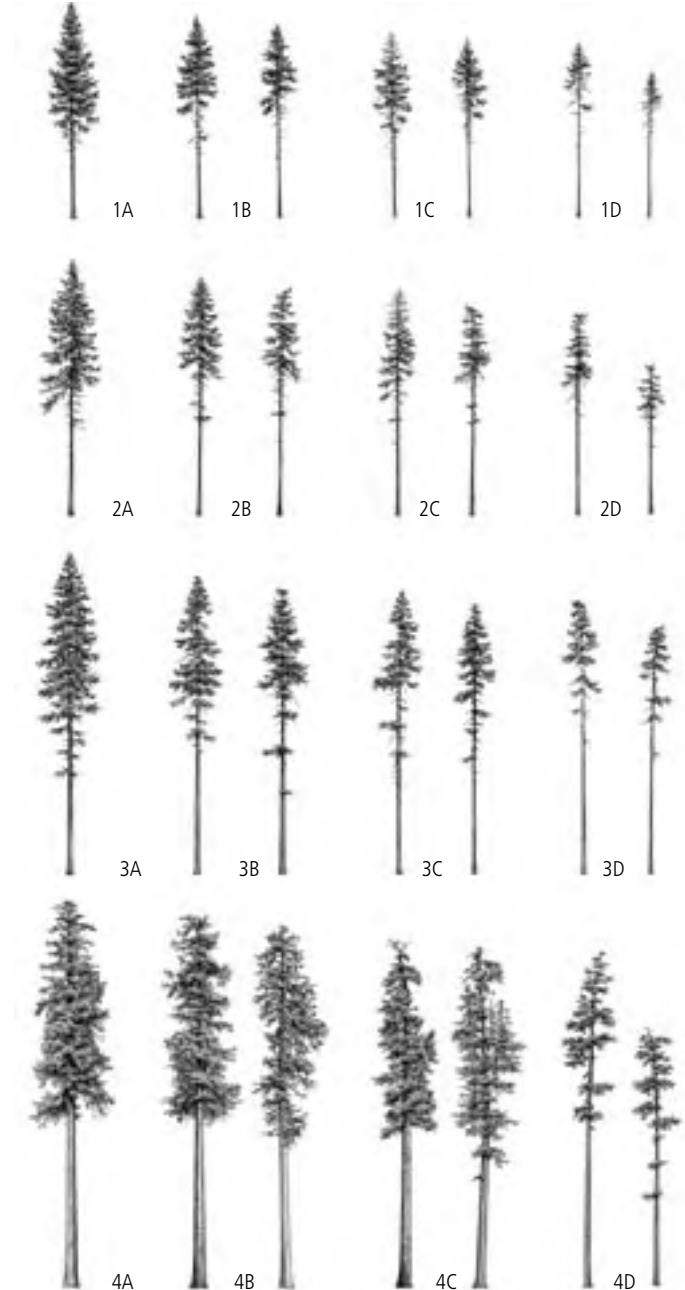
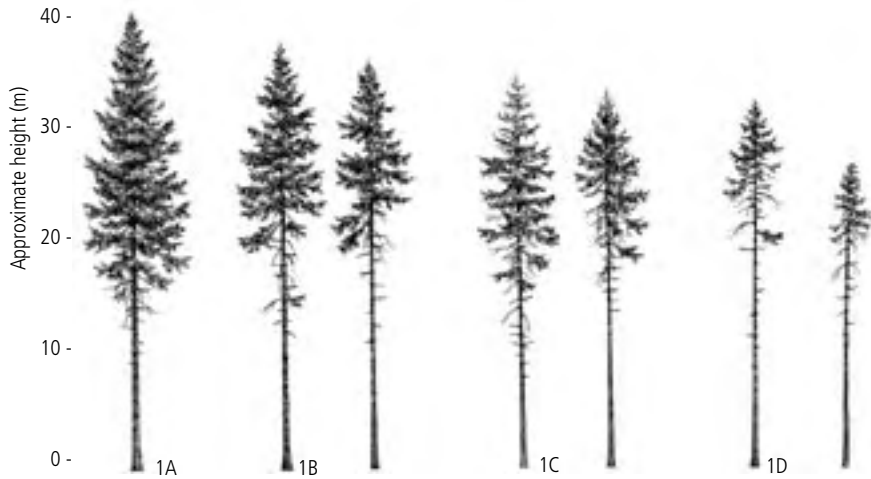


Figure 55. Crown form and tree vigor. The Douglas firs depicted are idealized forms representing four age classes (1-4) and four vigor classes (A-D) in western Washington. The 28 trees are all at the same scale. On the following pages the four age classes are presented individually, with scales added.

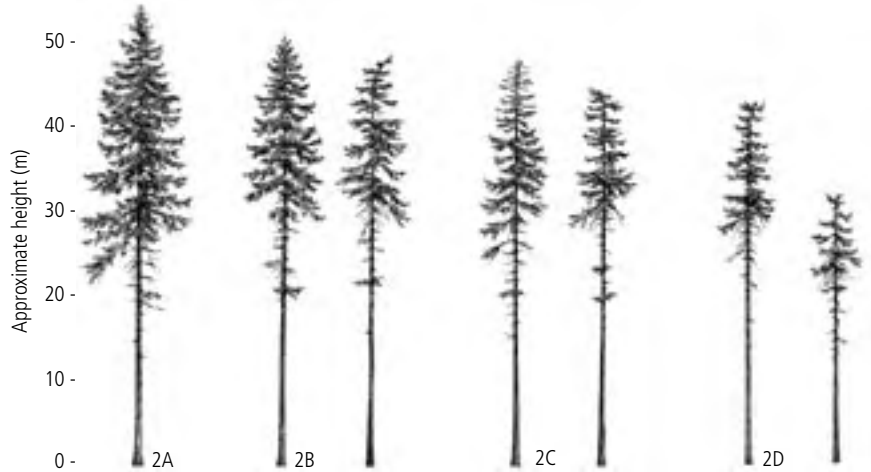
Douglas fir

Figure 55. Continued

Age class 1 60-100 years

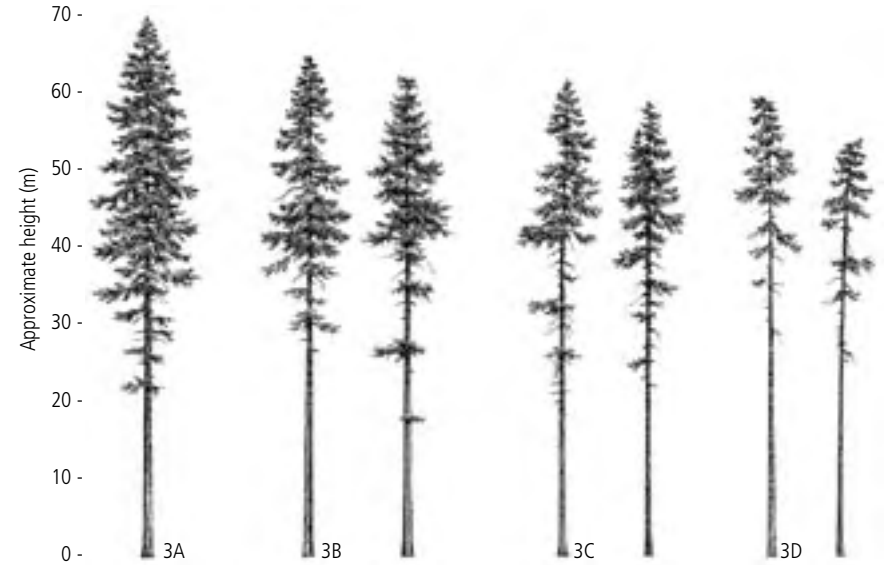


Age class 2 140-180 years

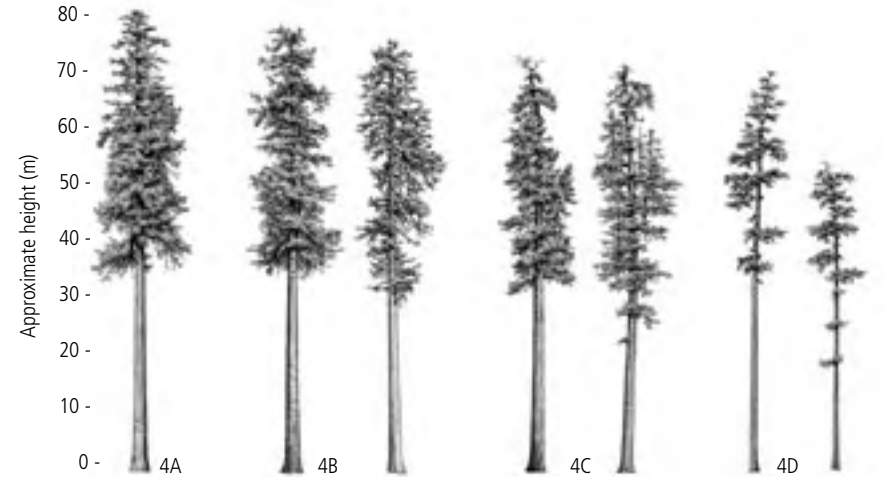


Douglas fir

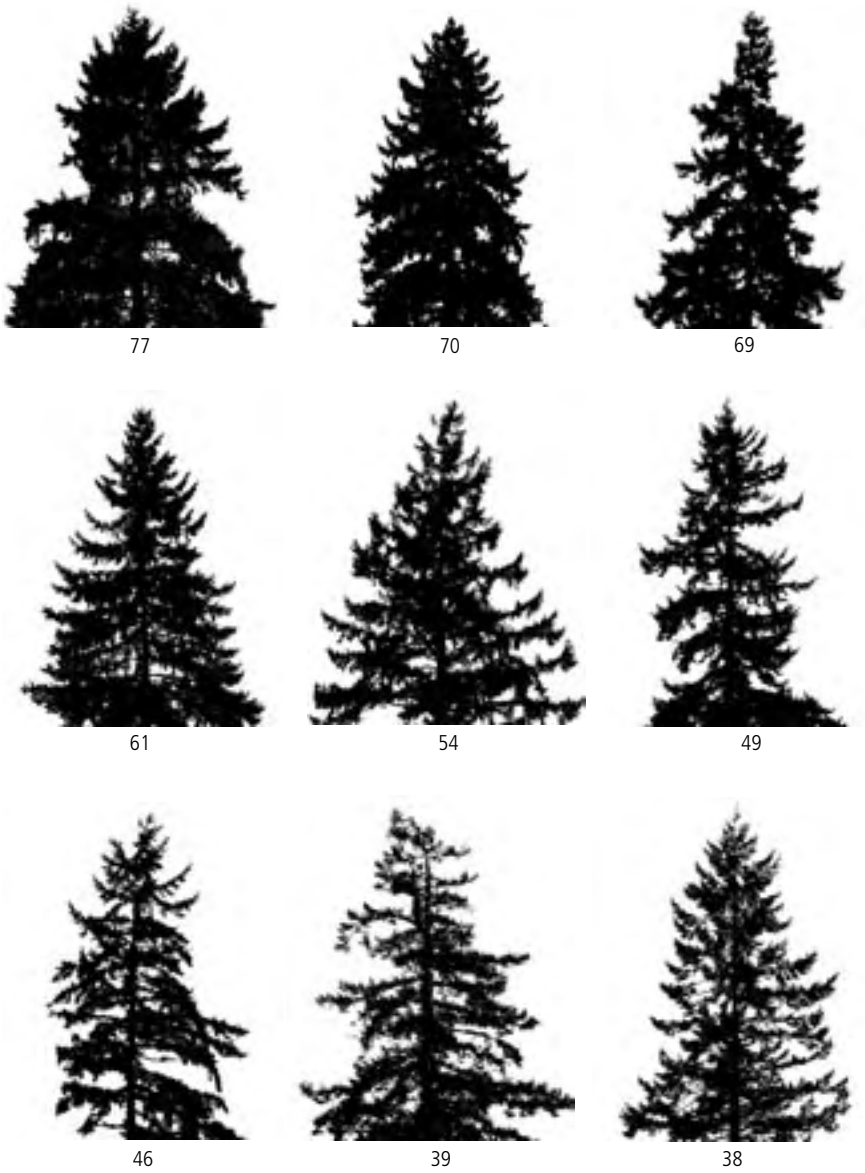
Age class 3 260 - 340 years



Age class 4 400 - 600 years



Douglas fir



Douglas fir

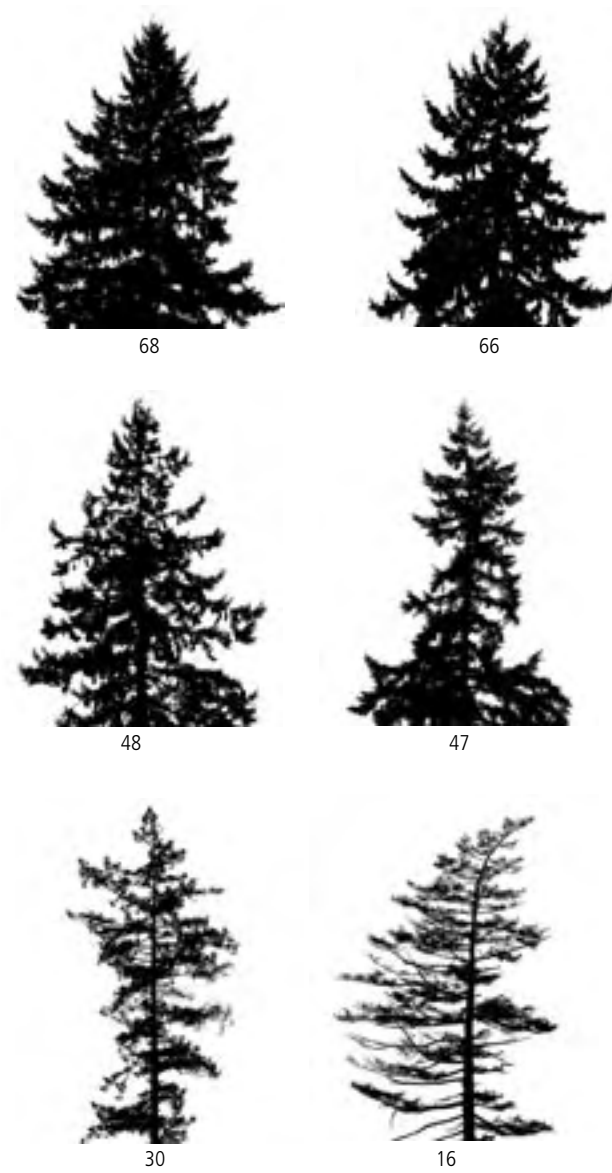


Figure 56. Crown opacity. An indirect measure of tree vigor. Numbers represent the percentage of sky that is blocked by the crown silhouette. Low numbers represent trees in decline that will probably not last long.

foliage and thus will probably not be able to sustain the amount of respiring tissue of all of their leaves, roots, and cambium.

Leaf mass is difficult to quantify, but it is related to the amount of sapwood area in the trunk, since this is the main transport of water and nutrients up from the soil. The density of the crown is also correlated with the amount of foliage. Crown opacity is a measure of the amount of sky that is blocked by the silhouette of a crown, and is another measure of tree vigor (Figure 56).

Rating system for determining general age of Douglas fir legacy trees

Choose one score from each category and sum scores to determine developmental stage

Bark condition, lower one-third of tree	Score
Hard, boney bark with small fissures0
Hard bark with deep fissures1
Hard bark with charcoal present2
Soft, flaky bark with deep fissures2
Flaky bark with charcoal present3

Knot indicators, lower one-third of tree	Score
Branch stubs present	0
Old knot/whorl indicators visible1
No knot/whorl indicators visible2

Lower crown indicators	Score
No epicormic branches	0
Small epicormic branches present1
Large and/or gnarly epicormic branches present2

Scoring Key	Age Range
< 2	Biomass accumulation/stem exclusion (35–80 years)
2–3	Maturation I – Forests originating after Euro-American settlement (70–160 years)
4–5	Maturation II – Forests originating before Euro-American settlement (140–240 years)
> 5	Old-growth (210+ years)

Longevity and death

A Douglas fir tree that has survived the myriad agents of mortality (root disease, stem rot, bark beetles, etc.) to become a canopy tree in an old-growth forest must still contend with the velvet top fungus (*Phaeolus schweinitzii*). This slow-growing fungus is often overlooked by many foresters, because it can often take 250–300 years before it makes its presence known (Figure 57). For stands of this age or older, it is the primary cause of Douglas fir mortality. This fungus causes decay in the upper roots and lower stem of old trees, weakening them. The sapwood of the tree is unaffected; many infected trees appear healthy and vigorous. Structurally, however, they have been compromised and a minor windstorm is often the final blow. Tip-ups with small root plates or snapped boles near the base indicate death caused by velvet top fungus (Figure 58).



Figure 57. Conks of the velvet top fungus. Photo: Jerry Franklin



Figure 58. Death by velvet top fungus. Top: The tip-up of a 361 cm diameter Douglas fir with a very small root wad — a sign of root rot. Lower images are of trees shattering near the base due to heart rot. The lower left is of a 323 cm diameter tree, near Lake Crescent and to the right is a 408 cm diameter tree at Quinalt Lake — both on the Olympic Peninsula. Both show the classic *barber chair* stump — healthy sapwood splintering around the decayed heartwood.

Sitka spruce (*Picea sitchensis*)

Sitka spruce is a maritime species, growing along the outer coast from Cape Mendocino in northern California to the Aleutian Island chain of Alaska. Within this range it seldom strays very far from salt water. A tolerance for salt spray combined with a wood that has among the highest known strength/weight ratios allows it to thrive in the outer coastal environment (Figure 59). The species achieves its best growth in western Washington, where it is found further from the sea than anywhere else in its range (Figure 60).

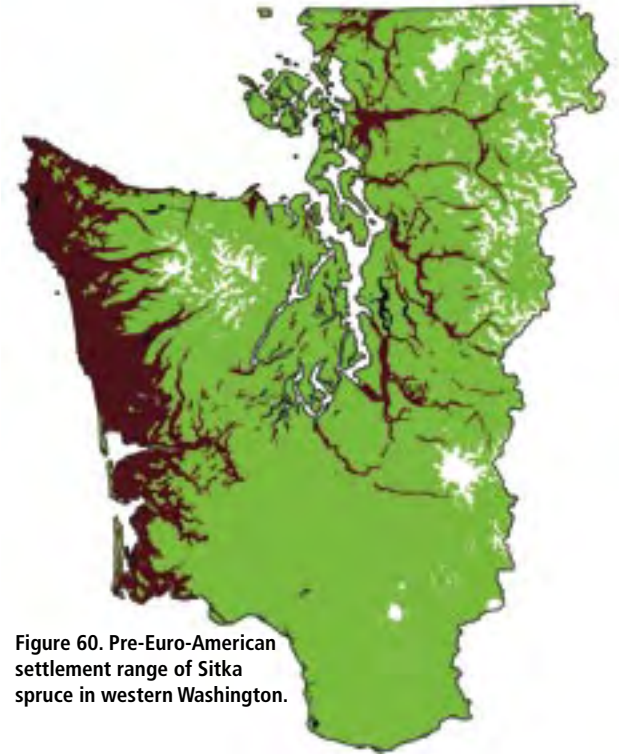


Figure 60. Pre-Euro-American settlement range of Sitka spruce in western Washington.

Of the major tree species found in western Washington, Sitka spruce is the most restricted tree to

low elevations. It can be found away from the coastal environment only along the floodplains of large, ocean-flowing rivers (Figure 61). The combination of medium shade tolerance and its preference for well watered, productive soils allows it to grow as far as 80 km from saltwater. It is so restricted to these productive, coastal sites that its presence is the basis for identifying one of our major forest zones (Figure 3). Forests within the Sitka spruce zone have some of the highest forest productivities reported for the planet (Figure 62). As a site-sensitive species, Sitka spruce is unable to establish in poor or dry environments — as illustrated by its absence from the slope forests adjacent to the river floodplains of the Cascade and Olympic Mountains.

Sitka Spruce

Along with Douglas fir, Sitka spruce is the other giant member of the pine family. The tallest and largest known trees are nearly the same size for both species (Douglas fir: 99.4 m, 349 m³; Sitka spruce: 96.6 m, 337 m³) The largest known diameter Sitka spruce (539 cm) is the largest recorded for any member of the pine family. It is odd that Sitka spruce and Douglas fir can be so similar in so many ways, yet could not be more different in others.

Early growth patterns

Perhaps the greatest difference between these two species is their seeding characteristics. While of similar size, the seed requirements of each species are completely different. The mineral soil of sand or ash preferred by Douglas fir is a poor seed bed for spruce. It instead prefers elevated organic substrates such as logs or stumps. In the moist, coastal environments where it grows, the forest floor is often a dense carpet of bryophytes and other plants. The thickness and competition these provide presents a difficult obstacle for the tiny seed to overcome. A log, however, especially one freshly fallen, provides a wonderful organic substrate that is (at least temporarily) free from this competition (Figure 63). Lines of trees are often visible in some of these coastal forests where competition on the forest floor is high (Figure 64). As the trees mature they form what is known as a **forest colonnade** (Figure 65).



Figure 59. Left: Windswept Sitka spruce trees adorn the outer coast from northern California to the Aleutian Islands of Alaska. Right: Trees along the ocean front often develop strange forms as a result of nearly constant exposure to high winds, even inside the protection of a forest.

Sitka Spruce



Figure 61. Large floodplains in western Washington provide ideal conditions for Sitka spruce to dominate, such as on the South Fork Hoh River on the Olympic Peninsula.



Figure 62. Rainforests dominated by Sitka spruce and western hemlock have some of the highest growth rates known — often producing record-sized trees in just two or three centuries.



Figure 63. Several groups of spruce seedlings can be seen colonizing wood in this grassy glade in the rain forest.



Figure 64. Young Sitka spruce trees growing in lines reveal that they started their lives on a log.



Figure 65. A forest colonnade. Mature trees in a row with interwoven roots is sometimes the only evidence of the former location of a nurse-log.

Life is precarious for a seedling that starts on an elevated substrate. The bark of a decaying log may slough off, taking the young plants with it. If the log decays quickly, the young seedling might not be able to get roots into the ground in time to support its own weight. To survive, the tree must ultimately be able to support its own weight and the roots that were in the log will become stems when the log disappears (Figure 66). If the log or stump on which the young spruce started its life was very large, huge buttresses may be the only evidence centuries later of the tree's origin (Figure 67).

Since Sitka spruce is a site sensitive species, variation in growth rates between trees is far less pronounced than for Douglas fir. Consequently, size and age are more closely correlated for Sitka spruce. This relationship holds true only for height and total volume, however, not for the diameter at breast height (DBH). Buttresses are highly variable and exhibit a considerable influence on DBH, depending on the size of the stump or log on which the spruce germinated. In older stands, measuring the DBH of a Sitka spruce amounts to nothing more than measuring buttress



Figure 66. If a spruce started on a very large log, the resulting tree can often have a bizarrely shaped root system.



Figure 67. The Quinault Lake Spruce. The huge buttresses found on trees such as this indicate that they started life on a very large stump or log.

roots, a measurement with limited usefulness. As an extreme example, how do you measure the DBH on the Quinault Lake Spruce (Figure 68)?

Patterns in mature trees

Many of the clues used to determine the age or successional stage of a Douglas fir do not apply to Sitka spruce. The textural patterns of the bark, for example, do not change much over time. The bark flakes that develop on trees during their first century of life continue, relatively unchanged, throughout the remainder of their life (Figure 69).

The pattern of epicormic branching in mature trees is also not as consistent as for Douglas fir. While Sitka spruce is every bit as capable as Douglas fir in producing epicormic branches, it often does not need to. Two primary reasons account for this: Sitka spruce is slightly more shade-tolerant than Douglas fir; and often grows in less dense stands. The loss of original branches and the lifting of the crown during the biomass accumulation/competitive exclusion phase is a major pattern in

densely-stocked Douglas fir stands; such a pattern is often less of a factor in many Sitka spruce stands. This is particularly true in the floodplain forests where spruce is often growing up through an alder canopy, rather than a dense stand of other spruces. Since alders are leafless for half of the year, some of the spruces will keep many of their original branches and thus maintain deeper crowns (Figure 70).

Even in the older Sitka spruce/western hemlock stands growing on floodplains, stand densities are much lower than their Douglas fir/western hemlock counterparts. This may be due in part to a shared dominance with bigleaf maple, and to a lesser degree, alder and cottonwood. Moreover, heavy grazing by deer and elk is common in many spruce floodplain forests and influences understory vegetation and seedling recruitment. Chronic, small-scale disturbances created by wind and/or flooding are common, as are the shorter life-spans of most of the tree species.

The strength of Sitka spruce wood makes it common for trees to live well into their third century with the simple architecture of their youth (Figure 71). By then, most of their height growth has been completed. Wind, decay, and the exposure to the elements begin to take their toll, creating the individuality seen in old spruce crowns (Figure 72).

Longevity and death

The pattern of slowed height growth in older stands is common to both Sitka spruce and Douglas fir. While the ultimate height and size of Sitka spruce and Douglas fir are similar, Sitka spruce achieves these dimensions in about half the time. This is advantageous for



Figure 68. The Quinault Lake Spruce. The red line indicates where DBH would be measured. How useful is such a measurement?



Figure 69. Bark characteristics do not change much with Sitka spruce. The left photo shows small trees near the coast that have similar bark flakes to the 450 cm tree in the right photo.

the spruce, since its lifespan is about half that of Douglas fir. On productive sites, a Sitka spruce has never been successfully aged to over 400 years, making it one of the shortest-lived of all western conifers. This may seem strange considering it is one of the largest trees in North America. Individual trees, such as the Quinault Lake Spruce, certainly live slightly beyond this but they cannot be aged by non-destructive methods. Even if cut, their centers would likely be rotten and hollow. Sitka spruce, like Douglas fir, is susceptible to velvet top fungus. Giant spruces are frequently killed by this disease after only 250-350 years (Figure 73). Trees that have their tops broken during storm events will also begin to decay from the top down, often breaking off in sections (Figure 74).

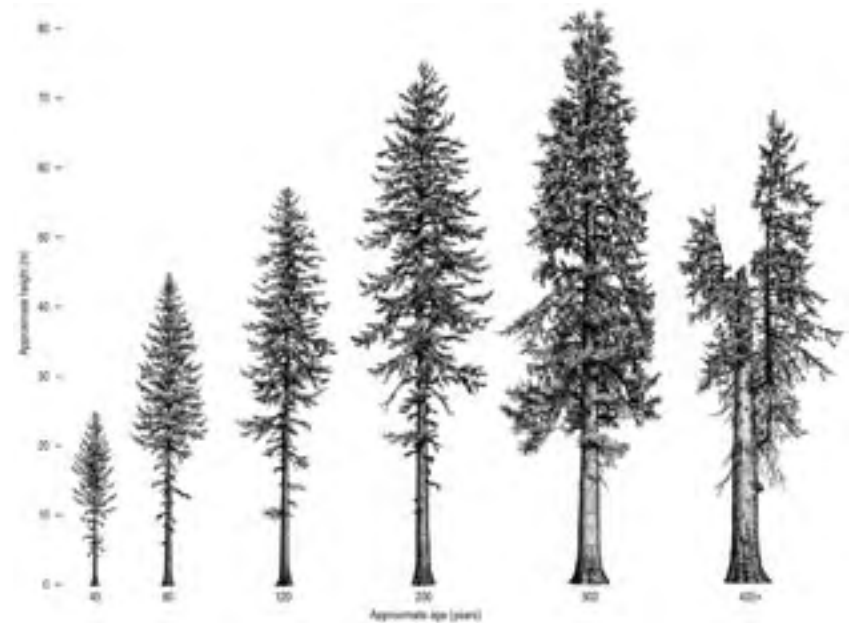


Figure 70. Changes in crown form in Sitka spruce over time. Note that despite a few epicormic branches in the lower crown, trees retain a simple architecture for the first two centuries. Decay puts an upper limit on longevity.

Figure 71. Upper canopy of a 250+ year-old spruce stand in Olympic National Park. Many of the trees still retain the branch structures of young trees.





Figure 72. Upper crown profiles of several 300+ year-old spruces. The simple growth pattern of youth is still detectable in a few trees, but their individuality and idiosyncrasies become apparent.



Figure 73. Death by velvet top fungus. The two classic cases are the fallen trunk, full of rot, with a small root wad (left), or the splintered stump, with sapwood still intact (right).



Figure 74. The rotten top of a 400+ year-old spruce snapped off in a violent winter storm, only to impale itself in the ground a full 20 m away from its base.

Noble Fir (*Abies procera*)

Within western Washington, noble fir is a subalpine species largely restricted to the south Cascades (Figure 75). A disjunct population also occurs at the higher elevations of the Willapa Hills. Noble fir is a very popular ornamental tree throughout the Pacific Northwest and is considered a premiere Christmas tree. Some of its beauty is attributed to the color of the foliage (Figure 15, left), which is derived from stomatal bands on both the upper and lower surfaces of the needles. Noble fir is the tallest (89.9 m tall) and largest (290 cm diameter, 161 m³ volume) recorded member of the true firs (genus *Abies*). It also can form pure, incredibly dense stands that can rival Douglas fir stands in total volume (Figure 76).

Within western Washington, noble fir is a subalpine species largely restricted to the south Cascades (Figure 75). A disjunct population also occurs at the higher elevations of the Willapa Hills. Noble fir is a very popular ornamental tree throughout the Pacific Northwest and is considered a premiere Christmas tree. Some of its beauty is attributed to the color of the foliage (Figure 15, left), which is derived from stomatal bands on both the upper and lower surfaces of the needles. Noble fir is the tallest (89.9 m tall) and largest (290 cm diameter, 161 m³ volume) recorded member of the true firs (genus *Abies*). It also can form pure, incredibly dense stands that can rival Douglas fir stands in total volume (Figure 76).

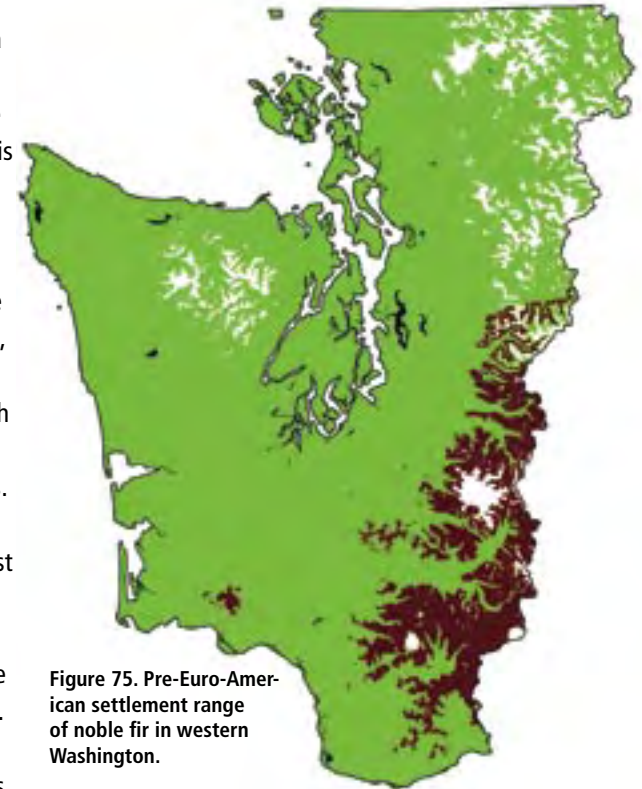


Figure 75. Pre-Euro-American settlement range of noble fir in western Washington.

In many ecological aspects, noble fir shares more in common with Douglas fir than other members of its own genus. Unlike most western true firs, noble fir is a shade-intolerant, pioneer tree that can regenerate abundantly after a severe disturbance. An important physical adaptation is its large cones, which are sparsely produced at the top of trees at maturity (Figure 77, Figure 15, left). These cones contain very large seeds, which can provide a young sprout with nutrients for up to a year while its roots are trying to find a favorable spot to grow. Like many other



Figure 76. One of the densest forests in the Pacific Northwest is surprisingly, *not* a Douglas fir forest, but this noble fir forest at the Mount Saint Helens National Volcanic Monument. This forest contains 3120 m³/ha, 64 percent of which is noble fir.



Figure 77. Noble fir cones, while not prolific, are produced near the top of the tree, providing the best opportunity for seed dispersal. Each large seed stands a better chance of survival than the multitude of tiny seed produced by a tree such as western hemlock.



Figure 78. A stunted old noble fir growing at 1500 m timberline in the south Cascades. Mount Saint Helens is visible in the distance.

true firs, the young seedlings can be very stiff and sturdy, not needing an elevated surface on which to grow. This characteristic allows noble firs to be very successful in areas with deep winter snowpacks (Figure 78). Four to five months of debris can accumulate atop the snowpack found in high elevation forests, smothering or crushing the small seedlings of species such as Douglas fir during spring snowmelt. Noble fir seedlings, even young ones, will often survive such abuse. While large seeds commonly limit seed dispersal distances, the snowy and icy environment of high-elevations can allow seeds to blow around to sometimes great distances (Figure 79).

Like Douglas fir, noble fir can regenerate quite abundantly after a severe fire (Figure 80). This quality, combined with the ability to withstand a deep snowpack, makes noble fir ideal for high-elevation forestry applications. Noble fir is the tree of choice wherever the replanting of Douglas fir is limited by snowpack. The wood of true firs is generally considered soft and weak, lacking the strength and decay resistance of Douglas fir or western larch. As such, the wood is often used for low-grade lumber products or pulp. Noble fir, however, produces a stronger and more durable wood, with a very high strength-to-weight ratio.

Noble fir



Figure 79. A small noble fir seedling in the middle of the pumice plain on the northeast section of Mount Saint Helens. The nearest mature noble fir to this tree is more than 5 km distant.

For this reason, noble fir along with Sitka spruce was used for airplane and ladder construction. When our ancestors discovered that noble fir did not have the poor quality wood associated with true firs, they called it larch, so that people would buy the wood. Both Oregon and Washington have a Larch Mountain, which was named for the noble fir growing atop them.

Like many other true firs, noble fir maintains a very symmetrical shape to its crown well into its second century. It also rigidly adheres to a whorl-based architecture. Young trees often appear perfectly symmetrical. Over time, exposure to wind and elements transforms the symmetrical crowns into the more individualistic crowns

typical of older forests (Figure 81). Many members of the pine family, most notably Douglas fir, continually replace their foliage through epicormic branching. Minor crown damage, from a windstorm for example, is quickly replaced by new foliage. The ability of noble fir to produce epicormic shoots or branches appears to be extremely limited; wind-damaged trees rarely recover. This, combined with susceptibility to root rots, ultimately limits the longevity of noble fir. Noble fir is abundant in old growth forests with ages up to 300, after which there is a rapid decline. A 400 year-old forest will have very few noble firs remaining, most of which will be declining.

Noble Fir



Figure 80. Two views of pure noble fir stands. The upper photo shows a pure stand of noble fir (bluish crowns in upper left of photo), that came in very densely after the 1902 Yacolt Burn. Note the scattered noble fir trees in the bottom right of the photo, which is an unburned section of older forrest. The bottom photo is the interior of a stand during the height of the biomass accumulation/stem exclusion phase of stand development — note the lack of vegetation in the understory. Also note the white, lichen-covered trunks are just beginning to develop the cracks that lead to bark appearance of mature trees. Photo below: Jerry Franklin.





Figure 81. Mature crowns of Noble fir begin to lose their symmetrical, model-conforming crowns of youth.

Western hemlock (*Tsuga heterophylla*)

As one of our most shade-tolerant tree species, western hemlock is abundant in nearly all old forests in western Washington (Figure 82). Although it is often

overlooked when growing with its much larger associates – Douglas fir, Sitka spruce, or western redcedar – western hemlock can occasionally reach impressive dimensions. It has been recorded to 78.0 m tall, 290 cm in diameter, and with a volume of 121 m³ (Figure 11). Even though it only represents a fraction of the wood volume in old-growth forests, it nearly always represents more than half of the foliage (Figure 83). Accordingly, western hemlock controls the understory light environment in

these old stands. A mature hemlock tree casts a very dense shade, only allowing shade-tolerant plants to persist.

Like Sitka spruce, western hemlock seedlings are mostly limited to elevated woody substrates (Figure 84). Large logs can present the same problems for a young hemlock seedling as for spruce, and successful seedlings can form similar rows of trees as they grow along the length of a log (Figure 85).

Besides stumps and logs, a third woody substrate exists that Sitka spruce does not typically exploit. Large Douglas fir trees often have a wide skirt of bark that

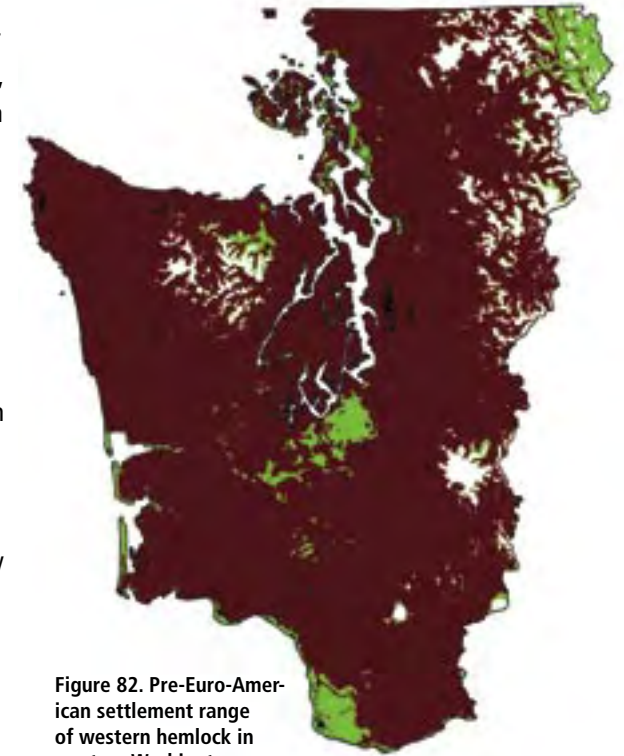


Figure 82. Pre-Euro-American settlement range of western hemlock in western Washington.

Western Hemlock

forms at their base (Figure 86). Douglas firs produce large amounts of bark during their lifetime, which accumulates at the base of the tree as it sloughs off. Because it is elevated and continually accumulating, it has reduced competition from other plants and roots. Bark decays very slowly, so this skirt of organic substrate makes the perfect growing medium for a young hemlock seedling. In old-growth Douglas fir forests it is common to see a big old tree with its *minion* – groups of small hemlocks clustered around the tree base (Figure 87).

Even though western hemlock is one of our most shade-tolerant tree species, it still needs a gap or other opening to ascend into the canopy. Like most shade-tolerant tree species, western hemlocks can persist in dark forest understories for decades, even centuries, without growing much (Figure 88). These small, *suppressed* trees often develop an umbrella shape, in an attempt to capture as much light as possible. In many cases, these suppressed trees are often nearly the same age as large hemlocks growing nearby that had better opportunities when younger. If an opening in the canopy occurs, such as when a large tree falls over, the small tree may be able to *release*, responding by increasing its growth in the new light environment. Usually, however, the light gap will be closed by neighboring trees or other trees present in the understory. In most old-growth forests, upper canopy western hemlocks have experienced repeated periods of suppression and release.



Figure 83. An old-growth Douglas fir/western hemlock stand at Mount Rainier National Park. Apart from some moss on the branches and a few ferns on the forest floor, all of the green in the photo is western hemlock foliage.

Western Hemlock



Figure 84. A Douglas fir log covered with moss and abundant western hemlock seedlings.

Figure 85. Western hemlock seedlings colonizing an open area with the help of a nurse log.

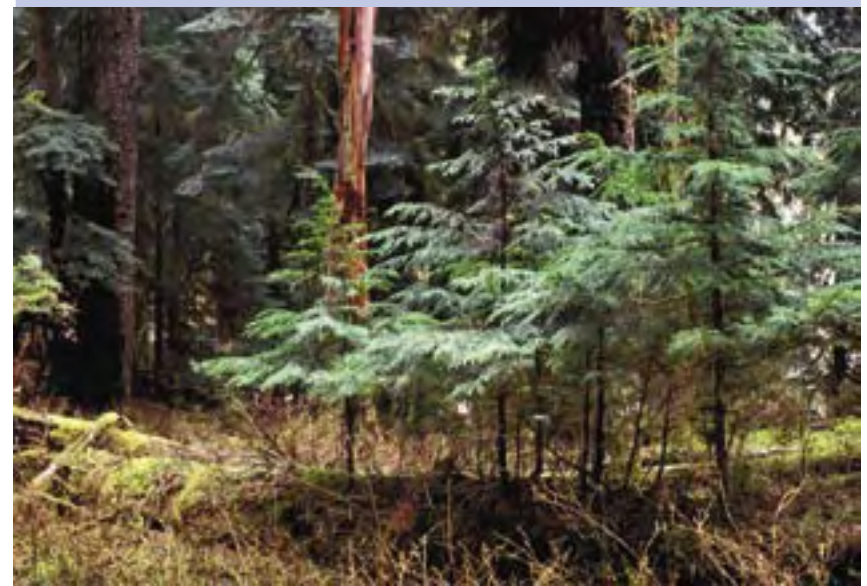




Figure 86. The common sight of a large skirt of bark at the base of an old Douglas fir tree. Note hemlock seedlings using bark as a growing substrate.

Many of the clues that reveal the age of Douglas fir trees, such as bark characteristics or epicormic branches, are often absent in western hemlock. Since old western hemlock trees often have bark similar to much younger trees, the bark appearance gives few clues to tree age. Due to western hemlock's high shade tolerance, the branch-pruning seen in Douglas fir may not occur. Epicormic branches are often not present, even in trees several centuries old (Figure

89). Branch size, however, does change predictably through time. Hemlock trees less than 150 years old typically have very small, but numerous, branches (Figure 90). The presence of large (> 10 cm) branches on a western hemlock is usually an indication of an older tree (Figures 89 and 91).

Hemlocks often do not appear in a stand until the second century, as outlined in the ideal stand development scenario presented earlier. Even at 200 years in many stands, depending on disturbance intensity and proximity to seed sources, hemlocks have yet to grow into the upper canopy. The presence of hemlocks of different sizes in a Douglas fir forest, including canopy trees, is therefore an excellent indication of an old-growth forest.

Even in coastal forests, where western hemlocks can sometimes be the oldest trees, a mixed structure stand will still take considerable time to develop. For example, a coastal stand that is blown over, burned, or clearcut, can come back to a pure hemlock canopy (Figure 13). The same patterns of development will occur under the idealized scenario presented earlier, substituting western hemlock for Douglas fir. Vertical diversification will still take time to develop.



Figure 87. Douglas fir *minion*. Western hemlock seedlings growing on shed bark accumulated at the base of the tree.

Hemlock dwarf mistletoe

A distinctive characteristic – mostly unique to western hemlock in western Washington – are mistletoe infections. Mistletoes are parasitic plants that grow in the canopy of many tree species. The leafy mistletoe popular at Christmastime is a member of the genus *Viscum* found on hardwood trees in Europe. Crowns of our native oak, (*Quercus garryana*), become infected with another leafy mistletoe of the genus *Phoradendron*. In contrast, dwarf mistletoes are small, leafless mistletoes that often infect the twigs in the outer crowns of trees (Figure 92). Many members of the *Pinaceae*, including Douglas fir, western larch, and several of our pine and fir species become infected with dwarf mistletoes of the genus *Arceuthobium*. In western Washington only one species is common: *Arceuthobium tsugense*, which is mostly limited to western hemlock crowns.

These parasitic plants possess a unique seed dispersal mechanism: the seeds are explosively discharged when ripe and coated with a sticky covering that can adhere to the leaves or stems on which they land. Depending on wind conditions and the location of the plant within the tree crown, the seeds can sometimes travel 10-12 m away from the parent plant. While impressive, this is a limited distance when compared to other mechanisms of seed dispersal. Occasionally the sticky seeds will adhere to a bird and be transported to another tree.



Figure 88. A 210 year-old hemlock that is scarcely 2 m tall in the south Cascades. Such suppressed trees form an umbrella shape — producing only a few leaves each year.

As a parasite, the mistletoe makes use of sugars produced by the host tree, reducing their availability for tree growth. Hormones produced by the mistletoe cause excessive, but deformed growth of the tree in the vicinity of the infection. This often results in broom formation – dense areas of foliage and branches which appear as star-shaped formations on branches (Figure 93).

Because of the relatively slow manner in which this species propagates itself, hemlock dwarf mistletoe is, with some exceptions, generally only found in older forests. The most common exception to this general rule is when infected hemlocks are the residual trees in a developing stand. The mistletoe is in a perfect position to rain down seeds onto the new cohort of trees. This scenario is most common along the coast, in areas where wind was the disturbance agent. After

a catastrophic wildfire, the few surviving hemlock trees will not usually persist long enough to infect the next generation of hemlocks, which may not establish for a century or more under the new Douglas fir canopy.

Longevity and death

Throughout much of its range in western Washington, western hemlock will be susceptible to decay



Figure 89. A 300 year-old hemlock in a 400+ year-old Douglas fir/western hemlock forest in the south Cascades. The extreme shade-tolerance of this species allows it to maintain its original branches close to the ground



Figure 90. Post-Euro-American settlement hemlocks rarely have branches > 10 cm, regardless of trunk size. Wood production is devoted to height growth and trunk enlargement, well into the second century.



Figure 91. Branches > 10 cm in diameter usually indicate an older hemlock, regardless of the trunk size.



Figure 92. A male hemlock dwarf mistletoe plant infecting a branch at 50 m above the ground. Female plants explosively discharge seeds which can occasionally fly 10 m or more away from the parent tree.

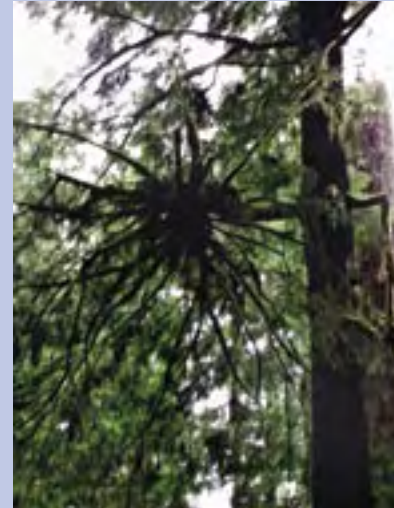


Figure 93. A mistletoe broom. Hormones within the mistletoe cause excessive growth in the hemlock in the vicinity of the infection. Such dramatic infections are usually only found in old forests.

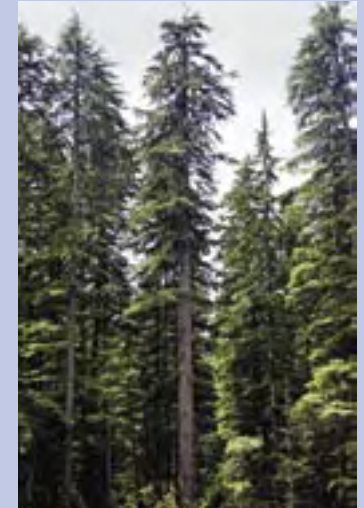


Figure 94. A section of pure western hemlock within a 400+ year-old Douglas fir/western hemlock forest. Such sights are usually the result of the Douglas fir being killed off by disease.

fungi and will likely die before reaching 300 years of age. This is true in nearly all forests below 1,000 m in elevation. The tree does not produce decay-resistance extractives in its heartwood, and the warmth and moisture of these low elevation sites is ideal for fungal growth.

Both Douglas fir and western hemlock are subject to a wide array of different decay fungi, several of which will attack one species and not the other. Particularly on poor sites, one will occasionally encounter sections of an old-growth Douglas fir/western hemlock forest in which all of the Douglas firs have died. In these situations, a limited area of pure hemlock forest might be found (Figure 94).

Because fungi are limited in their effectiveness at high elevations, such as the upper Pacific silver fir or mountain hemlock zones, western hemlock in these locations routinely reaches ages of 800+ years, even up to 1,200 years (Figure 95, Figure 11).



Figure 95. A section of forest that is several thousand years-old near Glacier Peak in the north Cascades. If the frequent avalanches do not kill the trees, many can survive for more than 1000 years.

Extremely old western hemlock forests, such as those on the coast or in the North Cascades, are also susceptible to one of our only outbreak insects – the hemlock looper (*Lambdina fiscellaria*). This moth has been known to defoliate small sections of pure hemlock stands from time to time. Given that most old hemlock stands are already infected with hemlock dwarf mistletoe, the results of a looper infestation can be particularly unsightly (Figure 96).



Figure 96. A pure hemlock stand in the north Cascades killed by the hemlock looper. The added stress of these dramatic mistletoe infections probably made the trees more susceptible to the defoliation.

Western redcedar (*Thuja plicata*)

Western redcedar might be considered the long distance runner of our native trees. It persists in small numbers for the first several hundred years and only shows its stamina with great age.

Like western hemlock, redcedar is very shade tolerant and often does not appear in Douglas fir forests until maturity. Western redcedar is the largest tree in the Pacific Northwest, with living individuals recorded up to 599 cm in diameter and 500 m³ of volume. With the exception of yellow cedar, western redcedar is the longest lived tree species in western Washington. Many specimens over 1,500 years of age have been recorded. Older trees probably exist, but are impossible to date due to their large sizes and often hollow centers.

Western redcedar has a very wide ecological amplitude, tolerating of a wide range of soil conditions, from sea-level to near timberline (Figure 97).

Most coniferous trees found in western Washington are members of the pine family. Western redcedar, in contrast, is a member of the cypress family, (*Cupressaceae*). Studies have shown the soils underneath an ancient redcedar are different than those under members of the pine family and influence seedling regeneration though a higher pH. In forests where western hemlock and western redcedar co-occur, seedlings of each species are more abundant under trees of their own

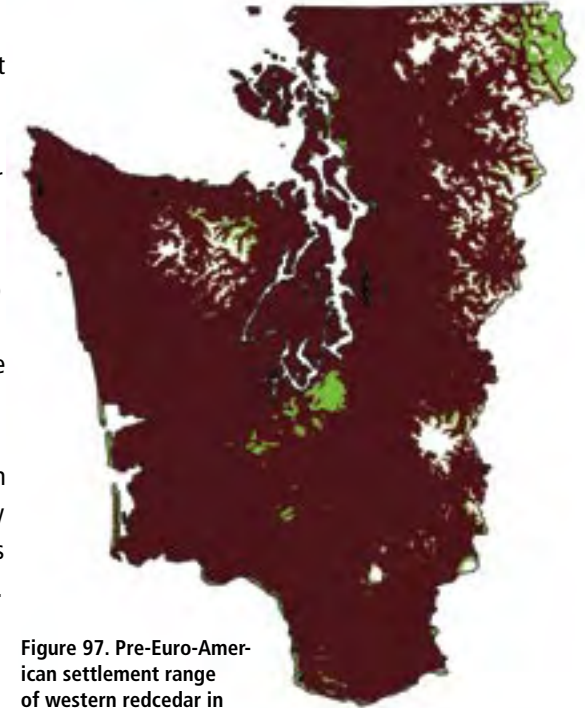


Figure 97. Pre-Euro-American settlement range of western redcedar in western Washington.



Figure 99. Extensive stands of nearly pure western redcedar are only found along the coasts of Washington and British Columbia. Photo: Bruce Van Pelt.

Figure 98. Away from the coast, pure groves of redcedar are limited to forested wetlands or sections of alluvial forest in the north Cascades, such as this stand from a swamp in the south Cascades.



species, than under trees of the other. Since western redcedar is such a long-lived species, one would expect its numbers to gradually increase over time. This is indeed what happens. Throughout most of western Washington, however, and particularly in the Puget Sound or Cascade provinces, forests over 500 years-old are uncommon. With the exception of some swampy areas, western redcedar is a minor component throughout this entire region (Figure 98).

Extensive forests dominated by western redcedar are found only along the coast (Figure 99, Figure 9). The dominance of redcedar in many coastal forests is only partly due to the moisture; it is also due to the great ages of the forests there. There are (or were) extensive forested areas along the coast where 1,000 years or more has passed since the last major fire event (Figure 100). In some of these coastal forests, several thousand years has passed without fire. No individual trees are that old, but some of these sites have been fire-free for 3-

4000 years or more. Had all of western Washington been kept free of fire for the last 1,500 years, western redcedar would be the dominant tree throughout the region.

Young redcedars preference for soils already occupied by redcedar is evident in some second-growth forests. Redcedar-dominated second-growth stands are only found on coastal sites that were previously ancient redcedar forests (Figure 101).

Redcedar is also different from members of the pine family in the decay-resistance of its wood. As with other cypress family trees such as coast redwood and yellow cedar, western redcedar has highly decay-resistant wood. It is thus unlike its common associates Sitka spruce or western hemlock, in that it can survive major crown damage. When the top of a spruce or hemlock is blown out, the tree will often be unable to outgrow the incipient decay. A redcedar, in contrast, will resprout new leaders and continue on.

Top die-back is common on redcedar in particularly hot, dry summers. After the die-back, a new leader (or leaders) will develop from an existing branch (or branches) below the dead top. The dead leader often will remain on the tree after this recovery, so that after many centuries of this process, many of these dead tops will be present – giving rise to the term *candelabra top* (Figure 102). In

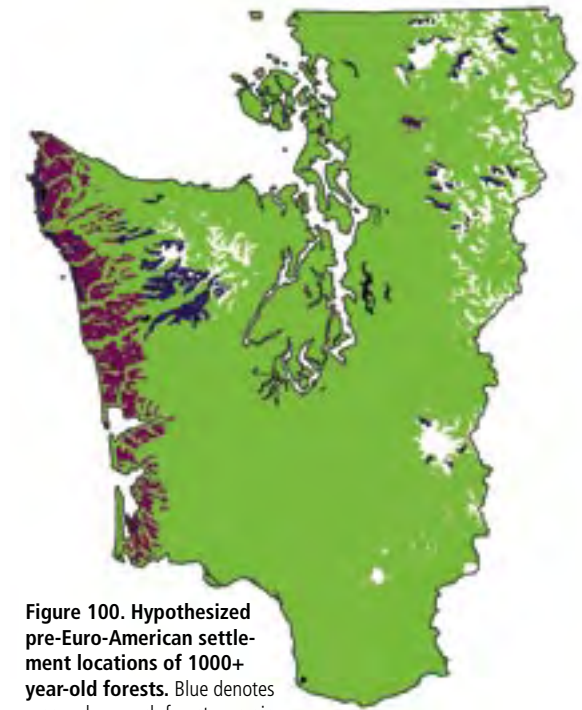


Figure 100. Hypothesized pre-Euro-American settlement locations of 1000+ year-old forests. Blue denotes areas where such forests remain intact.

Western Redcedar

many other trees, top dieback followed by reiteration from a side branch also occurs, but with different results. In a hemlock or a spruce, for example, the dead top will rot and fall away, so that after several decades the only evidence of the disturbance will be a slight kink in the trunk at the location of the resprout. The redcedar preserves its history of die-back and resprouting, so an ancient tree is a living record of its past.



Figure 101. Above a young, pure stand of western redcedar that regenerated after a cedar stand was logged.



Figure 102. Changes in crown form of western redcedar over time. Note that trees remain relatively simple for the first several centuries — it is only in great age that the individual character and *candelabra* tops often seen in ancient stands emerge.

Pacific silver fir (*Abies amabilis*)

Like western hemlock, Pacific silver fir is extremely shade-tolerant and is often represented in a variety of size classes in old-growth forests. However, it is less tolerant of warm temperatures and drought, and is more typically restricted to the cooler environments found at higher elevations than western hemlock. An exception is near the coast, where it is commonly found at low elevations (Figure 103). The largest recorded Pacific silver fir grew at only 283 m elevation on the coastal plain of the Olympic Peninsula (237 cm diameter, 63.4 m tall, and 74 m³ volume).

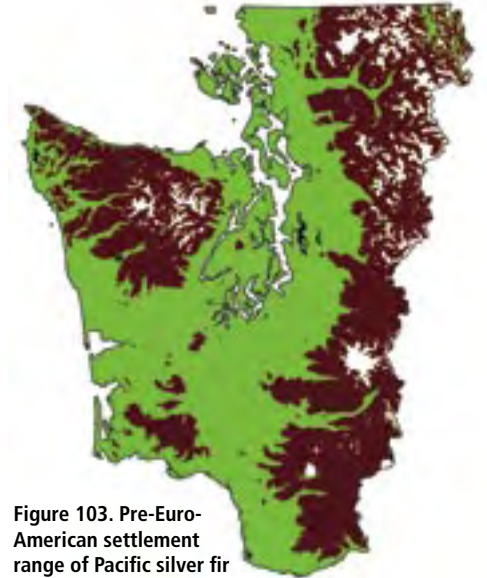


Figure 103. Pre-Euro-American settlement range of Pacific silver fir in western Washington.

The microclimate in the understory of an old-growth forest is heavily moderated by the canopy, being



Figure 104. Small patch of understory Pacific silver fir in a Douglas fir/western hemlock forest in the south Cascades. Many of these small trees are up to 170 years old, yet are still less than 2 m tall.

much cooler and moister in the summer and warmer in the winter. Because of this, it is not uncommon to see understory silver firs in portions of the western hemlock zone – places where it is absent or cannot survive in the upper canopy (Figure 104). Many of these understory trees, like their western hemlock associates, can exist for decades or even centuries as small, umbrella-shaped trees.



Figure 105. A very old forest of Pacific silver fir and western hemlock in the Olympic Mountains. Old individuals of silver fir can often be 600-800 years old and develop the flakey bark more characteristic of spruce.

Unlike its shade-tolerant associate western hemlock, Pacific silver fir does not prefer logs as a seedbed. The seeds of Pacific silver fir are very large, and can provide sustenance for young seedlings for a year or so while they get their small roots established. In addition, the young sprouts of Pacific silver fir are extremely stiff, and are often able to withstand the debris that small understory plants are subject to – the same debris that often smothers young hemlock seedlings. These factors combine to allow seedlings of Pacific silver fir to do well on many forest floor substrates.

While usually neither the largest or most conspicuous tree in the forests within the Pacific silver fir zone, Pacific silver fir is often the most numerous tree in mature and old forests (Figure 11). Young to mature trees maintain a relatively smooth bark that is often coated with one or several species of white, crustose lichens (Figure 11). Since silver firs are not decay-resistant, and few trees live more than a couple hundred years, these white-barked trees are all that many people ever see. In the cooler and moister parts of its range, however, silver firs can live to great ages. Older trees develop a flakier, sometimes purplish bark reminiscent of Sitka spruce (Figure 105).

In most situations, silver firs will only be a part of the upper canopy in the later stages of succession – just as western hemlock was in the stand development sequence presented earlier. Exceptions to this can occur if the forest blows over, leaving a hemlock and silver fir understory to become the new canopy. A similar situation occurred after the 1980 eruption of Mount Saint Helens. A Pacific silver fir understory was present underneath a dense snowpack in May when the eruption occurred. The overstory was killed by the intense heat, leaving only these small understory trees to start the new forest (Figure 106).

With very shade-tolerant trees such as western hemlock or Pacific silver fir, it is often useful to think of **functional ages**. In the example cited following the volcanic eruption, or in the example of the 21 Blow windstorm, understory trees grew as unconstrained seedlings as if they had been recently planted. Even though the trees may have been 100-200 years old, their functional age, such as the trees in Figure 13, will date from the time of the canopy removal.



Figure 106. Survivorship at Mount Saint Helens. A deep snowpack allowed a group of Pacific silver fir understory trees to become the new cohort when the remaining canopy was killed by the blast from the 1980 eruption.

Conclusion

The great diversity and ages of forests found in western Washington makes the task of creating a comprehensive guide difficult. There will be occasional forests that do not fit the keys properly, and others where the ages are difficult to discern. Each stand presents its own set of mysteries, and there are sure to be cases when professional judgment will have to substitute for certainty. Ultimately, however, it is to be hoped that the ecological knowledge contained in this guide can be used to narrow the range of possibilities and give the user increased confidence in making age determinations in older forests.

English Equivalents

When you know:	Multiply by	To find
Centimeters (cm)	.39	Inches (in)
Meters (m)	3.28	Feet (ft)
Kilometers (km)	.62	Miles (mi)
Square kilometers (km ²)	.386	Square miles (mi ²)
Square kilometers (km ²)	247.1	Acres (ac)
Hectares (Ha)	2.47	Acres
Cubic meters (m ³)	35.3	Cubic feet (ft ³)
Cubic meters (m ³)	177	Approx*. Board feet (bf)

*Based on ft³ x 5

Citations

Franklin, J.F. and C.T. Dyrness. 1973. Natural vegetation of Oregon and Washington. USDA Forest Service, Pacific Northwest Research Station General Technical Report PNW-8. Portland, OR. 417 p.

Franklin, J.F., and R.H. Waring. 1980. Distinctive features of the northwestern coniferous forest: development, structure, and function. Pages 59-86 in R.H. Waring (ed.), Forests: fresh perspectives from ecosystem analysis. Oregon State Univ. Press. Corvallis, Oregon.

Franklin, J.F., T.A. Spies, R. Van Pelt, A.B. Carey, D.A. Thornburgh, D.R. Berg, D.B. Lindenmeier, M.E. Harmon, W.S. Keeton, D.C. Shaw, K. Bible, and J. Chen. 2002. Disturbances and structural development of natural forest ecosystems with silvicultural implications, using Douglas fir forests as an example. For. Ecol. Manag. 155: 399–423.

Keen. F.P. 1943. Ponderosa pine tree classes redefined. J. For. 41: 249-253.

Appendix

Crosswalk between stand development terms used in this guide and terms used in other DNR publications.

OG Guide	DNR Glossary	Essential Ecological process, elements and other notes
Cohort establishment phase	Ecosystem initiation	Establishment of cohort individuals
Canopy closure	Competitive exclusion: sapling exclusion	Canopy closes
Late canopy closure and early Biomass accumulation/stem exclusion	Competitive exclusion: pole exclusion	Inter-tree competition is the dominant ecological process. Live trees compete with each other for resources (light, water, nutrients). Loss of stems <2" dbh due to shading; Self pruning begins
Biomass accumulation /stem exclusion and early Maturation I	Competitive exclusion: large tree exclusion	Inter-tree competition is the dominate ecological process. Live trees compete with each other for resources (light, water, nutrients). Loss of stems <5" dbh due to shading.
Maturation I	Understory development And Botanically diverse	A shift of the dominate mortality processes occurs from inter-tree competition to stochastic events (disease, wind, fire, pests) resulting in stem loss of larger trees (dominant and co-dominant) and a loss of shade. Openings in the canopy appear, allowing regeneration of shade tolerant species. High rate of biomass accumulation is maintained. In later stages, rate of live biomass accumulation begins to decrease. Continued understory development and stochastic stem loss. Stages generally lacking large down woody debris and large snags.
Maturation II	Botanically diverse	Development of additional species in lower and mid canopy. Large down woody material and large snags are generally absent or at low levels.
Vertical diversification	Niche diversification	Development of additional species in lower and mid canopy to abundant additional species at all canopy levels and increasing levels of large down woody debris and large snags.
Horizontal diversification	Fully functional	More stochastic stem losses create larger gaps. High accumulation of large woody debris, large snags.

Development stages used in this guide from Franklin et al. 2002. DNR stages adapted from Carey et al 1996 and Franklin et al 2002.

About the author

Robert Van Pelt is a research ecologist at the University of Washington in Seattle, where he received both his Ms and PhD. A native of the Midwest, he has lived in Seattle for more than 20 years. He has studied old-growth forests extensively across North America, particularly in California and the Pacific Northwest.

Currently, he is involved in canopy research on the structure and physiology of the world's tallest trees – coast redwood, Douglas fir, Sitka spruce, giant sequoia, and mountain ash in Australia. Always fascinated with facts and figures, his passion for trees led him to start the Washington Big Tree Program in 1987, which keeps records on the largest of each species of tree in the state. This ultimately led Robert to write *Forest Giants of the Pacific Coast* (2001), which chronicles in detail the largest trees in western North America.



Author, Robert Van Pelt 170' up in a pine tree.
Photo: Will Blozan



WASHINGTON STATE DEPARTMENT OF
Natural Resources
Doug Sutherland - Commissioner of Public Lands

Land Management Division
P.O. Box 47016
Olympia, WA 98504-7016

www.dnr.wa.gov

Persons needing this information
in an alternate format may call
(360) 902-1600 or TTY 711.

Printed in the USA