

WA  
353.1  
St29a  
1987  
ed9  
KING 074  
C1

# We the People

of the United States, in order to form a more perfect Union, establish Justice, insure domestic Tranquillity, provide for the common defence, promote the general Welfare, and secure the Blessings of Liberty to ourselves and our Posterity, do ordain and establish this Constitution for the United States of America.

## Article I

Section 1. All legislative Powers herein granted shall be vested in a Congress of the United States, which shall consist of a Senate and House of Representatives.

Section 2. The House of Representatives shall be composed of Members chosen every second Year by the People of the several States, and the Electors in each State shall have the Qualifications requisite for Electors of the most numerous Branch of the State Legislature.

No Person shall be a Representative who shall not, when elected, be seven Years of Age, and seven Years a Citizen of the United States, and who, when elected, shall not, when elected, be an Inhabitant of that State in which he shall be chosen.

Representatives and electors shall be chosen every second Year by the People of the several States, and the Electors in each State shall have the Qualifications requisite for Electors of the most numerous Branch of the State Legislature.

Representatives and electors shall be chosen every second Year by the People of the several States, and the Electors in each State shall have the Qualifications requisite for Electors of the most numerous Branch of the State Legislature.

Representatives and electors shall be chosen every second Year by the People of the several States, and the Electors in each State shall have the Qualifications requisite for Electors of the most numerous Branch of the State Legislature.

Section 3. The Senate of the United States shall be composed of two Senators from each State, chosen by the Legislature thereof for six Years; and each Senator shall have one Vote.

Representatives and electors shall be chosen every second Year by the People of the several States, and the Electors in each State shall have the Qualifications requisite for Electors of the most numerous Branch of the State Legislature.

Representatives and electors shall be chosen every second Year by the People of the several States, and the Electors in each State shall have the Qualifications requisite for Electors of the most numerous Branch of the State Legislature.

Representatives and electors shall be chosen every second Year by the People of the several States, and the Electors in each State shall have the Qualifications requisite for Electors of the most numerous Branch of the State Legislature.

Representatives and electors shall be chosen every second Year by the People of the several States, and the Electors in each State shall have the Qualifications requisite for Electors of the most numerous Branch of the State Legislature.

Representatives and electors shall be chosen every second Year by the People of the several States, and the Electors in each State shall have the Qualifications requisite for Electors of the most numerous Branch of the State Legislature.

Representatives and electors shall be chosen every second Year by the People of the several States, and the Electors in each State shall have the Qualifications requisite for Electors of the most numerous Branch of the State Legislature.

Representatives and electors shall be chosen every second Year by the People of the several States, and the Electors in each State shall have the Qualifications requisite for Electors of the most numerous Branch of the State Legislature.

Representatives and electors shall be chosen every second Year by the People of the several States, and the Electors in each State shall have the Qualifications requisite for Electors of the most numerous Branch of the State Legislature.

Representatives and electors shall be chosen every second Year by the People of the several States, and the Electors in each State shall have the Qualifications requisite for Electors of the most numerous Branch of the State Legislature.

Representatives and electors shall be chosen every second Year by the People of the several States, and the Electors in each State shall have the Qualifications requisite for Electors of the most numerous Branch of the State Legislature.

Representatives and electors shall be chosen every second Year by the People of the several States, and the Electors in each State shall have the Qualifications requisite for Electors of the most numerous Branch of the State Legislature.

Representatives and electors shall be chosen every second Year by the People of the several States, and the Electors in each State shall have the Qualifications requisite for Electors of the most numerous Branch of the State Legislature.

Representatives and electors shall be chosen every second Year by the People of the several States, and the Electors in each State shall have the Qualifications requisite for Electors of the most numerous Branch of the State Legislature.

Representatives and electors shall be chosen every second Year by the People of the several States, and the Electors in each State shall have the Qualifications requisite for Electors of the most numerous Branch of the State Legislature.

Representatives and electors shall be chosen every second Year by the People of the several States, and the Electors in each State shall have the Qualifications requisite for Electors of the most numerous Branch of the State Legislature.

Representatives and electors shall be chosen every second Year by the People of the several States, and the Electors in each State shall have the Qualifications requisite for Electors of the most numerous Branch of the State Legislature.

Representatives and electors shall be chosen every second Year by the People of the several States, and the Electors in each State shall have the Qualifications requisite for Electors of the most numerous Branch of the State Legislature.

Representatives and electors shall be chosen every second Year by the People of the several States, and the Electors in each State shall have the Qualifications requisite for Electors of the most numerous Branch of the State Legislature.

1.9.87

# VOTERS' PAMPHLET

## OFFICIAL LOCAL VOTERS' PAMPHLET

Published jointly by:



Office of the Secretary of State



King County Division of Records & Elections

## STATE GENERAL ELECTION

NOVEMBER 3, 1987

WASHINGTON STATE LIBRARY

STATE DEPOSITORY COPY

Edition 9

---

## INTRODUCTION TO THE 1987 VOTERS' PAMPHLET

---

Fellow Washingtonians:

It is my pleasure to take part in introducing you to the King County edition of the 1987 Voters' Pamphlet which for the first time contains information on both state and local issues and races.

Washington has always been at the forefront of efforts to better inform the electorate about issues and candidates. In 1914, the state became one of the first in the nation to publish a voters' pamphlet for its citizens. In recent years, this information service has been expanded to include tape cassette, Braille, and Spanish-language versions of the pamphlet.

Another recent development has been the passage of legislation authorizing cities and counties to produce voters' pamphlets on local issues and candidates. With the publication of this edition, King County and Seattle are among the first local municipalities to take advantage of these new opportunities for increased voter information.

I want to thank and congratulate King County and the City of Seattle for their participation in this combined pamphlet. There are more local jurisdictions in King County than almost any other county in the nation, making the production of this pamphlet a monumental undertaking. The people who developed this publication deserve our thanks for a job well done.

This pamphlet will assist you in making decisions on the critical issues and important races which face us this year. I urge you to make full use of its contents, and to exercise your constitutional right by voting on November 3.



  
Ralph Munro  
Secretary of State

Dear King County Resident:

This Voters' Pamphlet commemorates the 200th anniversary of our United States Constitution. In those 200 years, our nation has strived to be a government "of the people, by the people and for the people." Every citizen 18 years and older now has the opportunity to elect our leaders, vote on issues, and shape our future.

This inaugural issue of the King County Local Voters' Pamphlet brings to all King County residents for the first time the opportunity to study local candidate statements and issues on their ballot. Voter registration information, a sample ballot, absentee ballot requests and other election information are included for your benefit. Special editions in Spanish, Chinese, Braille, and tape cassettes are available so that more of our citizens can make informed decisions.

The voters' pamphlet represents regional cooperation at its finest—public agencies sponsoring a forum in which candidates for public office can share their platforms and backgrounds with the voters who elect them. I extend special thanks to all who joined King County in this first edition.

I urge you to read this pamphlet and study the issues. Then join with me on Tuesday, November 3, to vote and continue our heritage of "We the people . . ."



  
Tim Hill  
King County Executive

# TABLE OF CONTENTS

WASHINGTON STATE LIBRARY



A60004 708109

	Page
Referendum Bill 41 .....	4
Initiative to the Legislature 92 .....	6
Senate Joint Resolution 8207 .....	8
Senate Joint Resolution 8212 .....	10
House Joint Resolution 4212 .....	12
House Joint Resolution 4220 .....	14
Complete Text of State Measures .....	16
King County .....	19
Port of Seattle .....	22
Cities and Towns .....	23
School Districts .....	26
Water Districts .....	34
Fire Districts .....	36
Sewer Districts .....	40
Water and Sewer Districts .....	40
Complete Text of Propositions .....	41
Voter Pamphlet History .....	42
Comment Sheet .....	42
Major Political Party Caucus and Convention Procedures .....	43
Independent Candidate and Minor Political Party Nominating Procedures .....	44
Voter Information .....	45
Sample Ballot .....	46
Absentee Ballot Request Forms .....	47

**Your Voter Registration Card will assist you in the use of this pamphlet and at the polls on election day.**

**CERTIFICATE OF REGISTRATION**

KING COUNTY, STATE OF WASHINGTON CERTIFIES THAT:

- VOTER JANE Q
- 0000 FREEDOM ST
- SEATTLE 00000

is eligible to vote in SEA 00-000 precinct

as of 05/03/82 Registration Date 04/03/82

REGISTRATION NO KI-00-000-0000

POLLING PLACE NEIGHBORHOOD SCHOOL  
0000 ELECTION AV

You are eligible to vote in the following districts:

LEGISLATIVE 01 CONGRESSIONAL 0 COUNTY COUNCIL 1 JUDICIAL SE

S1, D4 F4 W14 H-2 DM IPR

Name of voter and address at which registered.

Voting precinct number (or sometimes a name).

Date of registration.

This voter's registration number.

Location at which this voter votes.

Washington State Legislative District.

County Council member district.

*Jane Q. Voter*  
Signature of Registered Voter

Date that voter can *actually* start voting in this precinct.

School District number, other taxing districts.

**LIBRARY USE ONLY**

**SECRETARY OF STATE TOLL-FREE HOTLINE:** ..... 1-800-824-VOTE (8683)

**KING COUNTY DIVISION OF RECORDS AND ELECTIONS:**

**Voter Registration Information:** ..... 344-5282

**Election Information:** ..... 344-2565





# REFERENDUM BILL 41

Chapter 246, Laws of 1987

Note: The ballot title and explanatory statement were written by the Attorney General as required by law. The complete text of Referendum Bill 41 begins on page 16.

Vote cast by the 1987 Legislature on final passage:  
HOUSE: Yeas, 77; Nays, 17; Absent or not voting, 4.  
SENATE: Yeas, 36; Nays, 9; Absent or not voting, 4.

## Official Ballot Title:

Shall the State challenge in the United States Supreme Court the constitutionality of authority delegated to the federal reserve system?

## The law as it now exists:

The Federal Reserve System, created by Congress in 1913, authorizes the Federal Reserve Board to exercise some controls over Federal Reserve banks and the nation's monetary policy. The following are some of the Board's powers: general supervisory powers over federal reserve banks, controlling discount rates, providing exceptions from bank

reserve requirements, requiring write offs of worthless bank assets, and controlling the issuance of Federal Reserve notes. Some of the purposes of the Federal Reserve System are: providing a nearly uniform discount rate, control of the money supply, requiring reserves for protection of banks, permitting elasticity in the creation of currency, supervision of the banking business and creation of a market for commercial paper.

## The effect of Referendum Bill 41, if approved into law:

The State Legislature is to seek, through an attorney it selects, to have the United States Supreme Court accept a lawsuit commenced by the state. The lawsuit would challenge (1) the constitutionality of the delegation to the Federal Reserve System of the power to create money and exercise control over economic activity, and (2) the delegation of authority under which banks have made unrestricted foreign loans.

## Statement against

### SAVE MONEY - VOTE "NO" ON REFERENDUM BILL 41

The lawsuit proposed by this referendum would be frivolous and costly. In 1982 the Attorney General of the state of Washington declined to file a lawsuit challenging the constitutionality of the Federal Reserve System because there was "no real possibility that the United States Supreme Court would strike down that law (if challenged) as an unconstitutional delegation of the power of Congress." In fact, the claim is so weak that the United States Supreme Court would probably not even consider it.

### LAWSUITS ARE EXPENSIVE

Your tax dollars and the human resources that would be spent conducting such a lawsuit would be wasted. These resources should be put to better use meeting the needs of the people.

### FEDERAL RESERVE SYSTEM IS CONSTITUTIONAL

Congress created the Federal Reserve System in 1913 to meet the country's need for a safer and more stable monetary system. It has properly fulfilled that role for almost 75 years. Congress oversees the operations of the Federal Reserve System through regular hearings and its review of semiannual reports. Also, the expenses of the Federal Reserve System are audited each year by the General Accounting Office, the auditing arm of Congress.

The United States Constitution gives Congress the power to regulate money and banking. The delegation by Congress to the Federal Reserve System of that power has been consistently upheld by the courts. A court challenge of

that delegation cannot win. It is wasteful to raise the issue again. Lawsuits are expensive. Save your tax dollars.

### VOTE "NO" ON REFERENDUM BILL 41

## Rebuttal of Statement for

Don't be misled by false claims and don't waste the taxpayers' money!

- The "Fed" is not "a private interest" group. Board members are appointed by the President and confirmed by the Senate.

- It is simple-minded to blame all our complex economic problems on this public agency.

- The Federal Reserve System's constitutionality has been consistently upheld by the courts.

Do not vote for a costly and frivolous lawsuit: Vote **NO** on 41.

### Voters' Pamphlet Statement Prepared by:

ARLIE U. DeJARNATT, State Senator; MAX VEKICH, State Representative; JOHN R. PRICE, Dean and Professor of Law, Seattle.

Advisory Committee: R. TED BOTTIGER, State Senator; KATHERINE ALLEN, State Representative; MIKE VESETH, Professor of Economics, Tacoma; RONALD GOULD, Attorney, Seattle.

## Statement for

In the 1890's, large special interests gained immense power. By 1913, what Lincoln had called "the money power" pushed the Federal Reserve Act through Congress, allowing the Fed control of the money system.

Money supply is the most important factor affecting our economy. The U.S. Constitution delegates monetary power to Congress. Congress gave this authority to the Fed, a private interest: a group of bankers overseeing a network of banks. The Fed behaves as an independent agency, essentially free from checks and balances restraining the power of other government branches.

The Fed is not only unconstitutional, it isn't working. Bank failures, business bankruptcies, farm foreclosures, unstable rates of inflation, interest and employment, trade deficits and national deficits are classic symptoms of a failing money system. Congress established the Fed to prevent such problems.

The Washington Legislature, long noted as a trendsetter, again leads the nation. Referendum 41 passed by 80% in both the House and Senate. They could have gone directly into Supreme Court, by-passing the voters. But because the people have never been heard regarding their money system, a statewide vote on constitutionality makes this a truly historic measure.

Washington is not alone in its concern. 21 state legislatures have taken action criticizing the Fed. Many states will join us in Supreme Court when Referendum 41 passes.

Referendum 41 is not a complete solution, but a necessary first step toward a solution. Your vote for Referendum 41 will convince Washington D.C. that we are serious about protecting our future.

## Rebuttal of Statement against

Referendum 41 will save you money. Cost will be about 5¢ per person, but could save \$7.00 per person the Fed now collects *each year* in interest on paper money they issue.

Suit is based on delegation and separation of powers doctrine, never before brought against Fed. Supreme Court *will* hear case brought by statewide ballot vote, especially with other states joining Washington.

No case directly challenging Fed's constitutionality has ever before reached Supreme Court.

### Voters' Pamphlet Statement Prepared by:

JACK METCALF, State Senator; RAY MOORE, State Senator; ROY A. FERGUSON, State Representative.

Advisory Committee: BOB WILLIAMS, State Representative; EUGENE V. LUX, State Representative; SHIRLEY J. WINSLEY, State Representative; BOB DILGER, Executive Secretary, Washington State Building and Construction Trades Council AFL-CIO; ART BRADEN, Vice President, JC's Governmental Affairs.





# INITIATIVE MEASURE 92

## TO THE LEGISLATURE

NOTE: The ballot title and explanatory statement were written by the Attorney General as required by state law. The complete text of Initiative Measure 92 begins on page 16.

### Official Ballot Title:

Shall it be a consumer protection violation for doctors treating Medicare eligible patients to charge more than Medicare's reasonable charges?

### The law as it now exists:

Medicare is a federal health insurance program under the Medicare law (Title XVIII of the Social Security Act). The administration of the Medicare program establishes what are entitled "allowable charges" (labeled by law as "reasonable charges") to determine the base for computing the payment by Medicare for medical services to

Medicare patients. At the present time, Medicare most frequently pays 80 percent of Medicare's established charges.

No state law limits the charges that can be made by physicians and other health care providers to Medicare patients. Physicians and other health care providers can charge Medicare patients more than the federally designated "allowable/reasonable charge." However, physicians who choose to contract as a "participating physician" in the federal Medicare assignment repayment program cannot charge any Medicare eligible patient more than the Medicare established charge. Physicians who do not contract but do directly submit billings to Medicare for individual patients cannot charge those individual patients more than the Medicare established charge.

Physicians are not required to enroll as providers in the Medicare program, nor to participate in the Medicare assignment repayment program. If the physician does not so participate, the patient, or the entity paying for the service, directly seeks partial reimbursement from Medicare for the medical services.

### The effect of Initiative Measure 92, if approved into law:

The State Consumer Protection Act would be amended to declare it to be an "unfair and deceptive practice" for a physician which includes medical doctors, osteopaths, chiropractors, podiatrists, dentists or optometrists to charge or try to collect for medical services to a Medicare eligible patient more than Medicare's established "allowable/reasonable charge". It would also be an "unfair and deceptive practice" for a physician to treat Medicare eligible patients other than solely in an emergency situation without enrolling as a "participating physician" in Medicare and being subject to the maximum charges established by Medicare.

Physicians would be required to post a summary of the initiative in their offices and failure to comply with its requirements could result in civil penalties, money damages or court injunctions. The State Attorney General or a Medicare patient could file a civil suit to enforce the law seeking treble damages not exceeding \$10,000, the costs of suit and attorneys fees. Additional penalties of up to \$25,000 can be imposed for violation of a court ordered injunction.

### Statement for

In 1965 Congress created Medicare because health care for America's elder citizens was in critical condition. Bad as things were then, the crisis is even worse today.

Seniors now spend more of their incomes on health care than they did before Medicare existed. The elderly spent 12 percent of their income on health care in 1980. By 1990 they will pay 19 percent, unless we do something quickly.

Initiative 92 cannot cure all of Medicare's ills, but it will take much of the uncertainty out of health care. It will make it illegal for a doctor to charge more than Medicare determines to be a "reasonable and customary charge." Seniors will know that Medicare will always pay 80 percent of their doctor's bills and that they are responsible for 20 percent. Doctors won't get away with overcharging their patients.

And once Initiative 92 passes, the complicated Medicare forms that intimidate so many elderly patients will become the responsibility of the doctor's office.

Initiative 92 will help families. Seniors on limited incomes cannot afford ever-increasing medical bills. By making medical care more affordable, Initiative 92 will make it less likely that the elderly will become a financial burden to their families.

Under the current Medicare reimbursement system, our state's sick and elderly people are forced to either subsidize their doctor's healthy incomes or go without medical care, causing minor illnesses to become major emergencies. That's bad medicine.

Vote YES on Initiative 92.

### Rebuttal of Statement against

Too bad organized medicine uses threats and misinformation.

Doctors claim Initiative 92 could limit access to health care. . .

Fact: Overcharges already keep many seniors away.

Doctors say Medicare doesn't pay them enough. . .

Fact: According to the AMA, the average doctor's take home pay is \$110,000. The average senior citizen receives a monthly Social Security payment of \$488.

Fact: I-92 will cost taxpayers nothing and stop doctors from overcharging.

Protect our health and dignity. Vote yes.

For additional information, call (206) 329-9764.

#### Voters' Pamphlet Statement Prepared by:

GEORGE FLEMING, State Senator; EUGENE V. LUX, State Representative; JIM LEWIS, State Representative.

CLAUDE PEPPER, U.S. Representative, Florida; KEN ANDERSON, President, Washington State Council of Senior Citizens; THOMAS HELLER, M.D., Seattle; SISTER VIRGINIA PAUL, Sisters of Providence, Walla Walla.

### Statement against

#### I-92 IS MISLEADING AND UNFAIR

If I-92 passes, all seniors, regardless of income, retired or working, will be charged less than others for medical care. These discounts will be "shifted" to non-senior patients; costs will increase for families and employers.

Don't believe that Medicare's "reasonable fees" are reasonable. The rates, frozen by Congress in 1984, have little to do with the actual cost of providing service.

#### SOME SENIORS WILL HAVE TO FIND NEW DOCTORS

If I-92 passes, some doctors will be forced to drop seniors and will be *prohibited by law from treating anyone over 65*. To quote the Washington Chapter of the American Association of Retired Persons: ". . . of Washington's 39 counties, 25 have areas that do not have enough primary care physicians. Nineteen of these counties have severe shortages. . . (I-92) . . . could cause some physicians to drop out of Medicare, thus limiting the availability of physician services to the elderly. Thus, AARP must oppose I-92." Our state's Senior Lobby does not support Initiative 92.

#### I-92 DENIES HEALTH CARE TO THE TRULY NEEDY

Despite Medicare's unreasonable rates, 27% of all doctors always accept them, over 90% accept Medicare's rates on a case-by-case basis. Many do not require needy seniors to pay anything. Under I-92, doctors *must* charge all seniors, regardless of income, the same unreasonable rates or be in violation of the law; true charity care will suffer.

#### I-92 WILL COST WASHINGTON TAXPAYERS MILLIONS

Washington taxpayers should not be charged to bail out, enforce, or endlessly litigate the federal Medicare pro-

gram. Real Medicare reform is needed in Congress. Join the thousands of seniors, employers, union members, health care professionals, and others in **VOTING NO ON I-92**.

### Rebuttal of Statement for

After investigating claims made by I-92 proponents, this committee, appointed by the Legislature to explain the arguments against I-92, has determined that:

- Congress has set Medicare's payment to doctors at approximately half the cost of actually providing medical services.
- Doctors charging medicare patients the same rate as other patients are not "overcharging;" Medicare is "underpaying."
- Current law provides adequate protections against true "overcharging."
- "Limited income" families will suffer if "unlimited income" seniors receive discounted care.

For additional information, call (206) 441-5863.

#### Voters' Pamphlet Statement Prepared by:

R. LORRAINE WOJAHN, State Senator; CLYDE BALLARD, State Representative; PATRICK R. McMULLEN, State Representative.

Advisory Committee: MIKE RENDISH, Chairman, Washington State Legislative Committee of the American Association of Retired Persons (AARP); RICK BROCK, Legislative Representative, Association of Western Pulp and Paper Workers (AWPPW); HANK SNIDER, Chairman, Employers Against Initiative 92!; RICK L. JOHNSON, M.D., President, Washington State Medical Association.



# SENATE JOINT RESOLUTION 8207

## PROPOSED CONSTITUTIONAL AMENDMENT

Note: The ballot title and explanatory statement were written by the Attorney General as required by law. The complete text of Senate Joint Resolution 8207 begins on page 16.

Vote cast by the 1987 Legislature on final passage:  
HOUSE: Yeas, 92; Nays, 3; Absent or not voting, 3.  
SENATE: Yeas, 45; Nays, 2; Absent or not voting, 2.

### Statement for

This change would be of great benefit to the entire judiciary and most particularly those judicial districts with few judges serving the district. There is often a great problem of transition between an outgoing judge and an incoming judge on pending cases. This particularly applies in instances where there are complicated and complex matters. This resolution would allow judges to clear up the caseload of those complicated cases which the judge had been hearing prior to retirement. Many of these cases have been before the court for many years. This would help the incoming judge to assume the regular caseload without pending cases to consume the limited time available.

Superior Court Judges often retire leaving unfinished cases. SJR 8207 would allow such a judge to complete a pending case without written agreement of the litigants. This is an efficient and economical means of continuing a case when a judge retires. A judge's ability after retirement to continue to sit on that case without obtaining consent of the litigants would result in considerable savings to the county, the state and to the parties.

These retiring judges were elected by the people and the parties have already agreed to this judge. In long and complex cases, it would be very difficult and time consuming for the succeeding judge to catch up with the case. The parties would experience delay, and the parties may try to change prior rulings.

### Official Ballot Title:

Shall the constitution empower superior court judges, after retirement, to complete pending cases in which they had made discretionary rulings?

### The law as it now exists:

When a superior court judge leaves office for retirement or any other reason, the former judge is no longer authorized or empowered to function as a superior court judge. If the parties to a case agree, and the court approves, such a former

judge or any member of the bar can preside as a judge pro tem for the case.

By statute a party to litigation has one opportunity, as a matter of right, prior to a discretionary ruling being made by a superior court judge to have that judge removed from handling a specific case.

### The effect of SJR 8207, if approved into law:

The constitution would be amended to specifically empower previously elected superior court judges upon retirement to continue to handle those pending cases in which the judge had made discretionary rulings prior to retirement. No agreement would be required by the parties for a retired judge to so function.

### Statement against

#### SJR 8207 DESTROYS THE ELECTED JUDICIARY

Every citizen who appears in court should be entitled to have his or her case heard by an elected judge—one subject to voter approval every four years. This constitutional amendment destroys that principle.

#### SJR 8207 CREATES A SPECIAL JUDICIAL "ELITE"

If approved by the voters, this measure would create a special category of "elite" unelected judges on the Superior Court bench in any county. Judges under this constitutional amendment could retire from the bench and still sit on cases of their own choosing. There would be no recourse by voters to examine their performance or express their objections through the election process.

#### SJR 8207 WOULD PROTECT IMPEACHED JUDGES

No definition of a retired judge is included in this special amendment for privileged judges. A "retired" judge could have reached such status by impeachment for malfeasance or misfeasance in office, but this measure makes no distinction and would not bar an impeached jurist from continuing to serve on the bench.

#### SJR 8207 BREAKS JUDICIAL AGE PROVISION

Superior Court judges now reach retirement age at 75 and must step down from active duty on the bench, a provision designed to keep our courts from becoming a haven for older jurists. If this constitutional amendment is adopted, a judge could keep serving on a case for life.

SJR 8207 would raise judicial costs. Keeping a Superior Court judge on the bench costs each county and the state up to \$250,000 a year. This additional cost for an "elite" class of judges, who are retired and non-elected, would have to be borne by all of the taxpayers.

### Rebuttal of Statement for

As established in our legal history, judges are required to rule on the "law," not on their own personal opinion. A judge who succeeds to another's case has this same duty.

A matter of "convenience" shouldn't override a bench where judge's decisions are subject to voter review at the ballot box. Nor should we breach the judicial retirement age of 75, or create additional costs to maintain an "elite" corps of jurists at taxpayer expense.

#### Voters' Pamphlet Statement Prepared by:

A.L. "SLIM" RASMUSSEN, State Senator; KENT PULLEN, State Senator.

Advisory Committee: LLOYD GARDNER, Washington Taxpayers Association; GLADYS E. EDWARDS, Property Owners Protection Association, Seattle; WILLIAM FOSBRE, Thurston County Chapter, Overtaxed.

### Rebuttal of Statement against

SJR 8207 would authorize assigning a retiring elected judge to continue hearing an unfinished complicated case which would be difficult and costly for a new judge to assume. Although this would seldom be done, when needed, it would save time and money for the county and litigants.

Article V, Sec. 2 of our Constitution, prohibits an impeached judge from continuing on any case. Active and retired judges continue to be subject to the supervision of the courts and impeachment laws.

#### Voters' Pamphlet Statement Prepared by:

IRV NEWHOUSE, State Senator; DENNIS DELLWO, State Representative.

Advisory Committee: PHIL TALMADGE, State Senator; RON MEYERS, State Representative; JACK DEAN, President, Washington State Bar Association; WALTER A. STAUFFACHER, Superior Court Judge, Superior Court Judges Association.





# SENATE JOINT RESOLUTION 8212

## PROPOSED CONSTITUTIONAL AMENDMENT

Note: The ballot title and explanatory statement were written by the Attorney General as required by law. The complete text of Senate Joint Resolution 8212 begins on page 17.

Vote cast by the 1987 Legislature on final passage:  
HOUSE: Yeas, 97; Nays, 1; Absent or not voting, 0.  
SENATE: Yeas, 45; Nays, 2; Absent or not voting, 2.

### Official Ballot Title:

Shall state constitutional restrictions, which prevent investment of some permanent public land funds in stocks and private lending, be removed?

### The law as it now exists:

The Washington State Constitution and state and federal law have created permanent funds which receive revenue from certain public lands. Those funds include as beneficiaries common schools, universities, normal schools, agricultural, and scientific purposes. Each fund makes investments to generate

income, however, these permanent funds have been constitutionally restricted from investing in stock or making any investments which could be construed as a lending of credit to a private party. In 1966 the voters approved the forty-fourth amendment to the state constitution removing that restriction for the permanent common school fund and permitting those funds to be invested as authorized by law. The other permanent funds, however, continue to have the original constitutional restrictions upon investments.

ject those funds to the same limitation as the permanent common school fund i.e., the Legislature would be authorized to determine what will be a proper investment of those funds.

### The effect of SJR 8212, if approved into law:

SJR 8212 would remove the constitutional restrictions on the investment of the public land permanent funds and sub-

## Statement for

### HELPS HIGHER EDUCATION

Our public universities, like the common schools, historically have benefited from trust funds created by the state constitution. These funds help support capital construction for all public education, kindergarten through graduate school.

When the funds were created, their investment was limited to specified, fixed security instruments, such as federal, state, county, municipal or school district bonds. To increase investment flexibility and potentially to improve returns on these funds, Washington voters have amended the Constitution three times: to enhance the Permanent Common School (K-12) Fund, state pension funds, and state industrial insurance funds.

### REDUCES TAXPAYER LIABILITY

SJR 8212 provides this same kind of investment flexibility for our public higher education trust funds which benefit the University of Washington, Washington State University, Central Washington University, Eastern Washington University and Western Washington University. It simply permits the state to invest balances in these funds "in any manner allowed by law," including investing in equity instruments, such as common stocks. This could both *improve the rate of return on these funds* and *reduce the need for more taxes or increased bonded indebtedness*.

### PROTECTS PUBLIC TRUST

SJR 8212 *does not require* investing higher education trust funds in stocks. It merely provides the opportunity to

do so, but within carefully prescribed laws established to safeguard all investments of public funds. This resolution authorizes wiser money management and permits expansion of our investment flexibility.

### VOTE YES ON SJR 8212; IT'S THE PRUDENT VOTE TO CAST

## Rebuttal of Statement against

Don't be misled by alarmist rhetoric. Since 1981, the State Investment Board has earned more than a 17 percent return on state pension and accident insurance funds by exercising -- within statutory safeguards -- investment flexibility identical to that which SJR 8212 allows for higher education trust funds.

SJR 8212 has overwhelming support from both political parties -- 97% of the Legislature voted for it.

Support higher education; reduce the drain on taxpayers.

*Vote YES on 8212!*

### Voters' Pamphlet Statement Prepared by:

MARCUS S. GASPARD, State Senator; E.G. "PAT" PATTERSON, State Senator; KEN JACOBSEN, State Representative.

Advisory Committee: ROBERT S. O'BRIEN, State Treasurer; BRIAN BOYLE, State Commissioner of Public Lands; LAWRENCE KENNEY, President, Washington State Labor Council, AFL-CIO; Delores Teutsch; Edwin McWilliams.

## Statement against

**VOTE NO** - The state should be prudent and sensible with public trust fund money.

### ENOUGH IS ENOUGH

Currently, other state trust fund money is invested in leveraged buyouts, venture capital, the stock market and real estate. This is gambling with our state money. Do not expose more public funds to these sophisticated and high risk investments. This is happening now - stop it by voting No.

### RISKY BUSINESS

Recently some of our state trust fund money was used to buy a Bellevue office park. The state of Washington should not be involved in commercial real estate. This is not what might happen if constitution limitations are removed, this is what is happening now with other trust fund money.

### FOUNDERS WERE RIGHT

State founders put restrictions on the use of the state's money and use of the state's credit. This change removes these prudent limitations. The opportunity for conflict of interest, corruption, middlemen, and losing great sums of money increase tenfold when restrictions are removed.

### STOP IT NOW

Right now the state invests trust fund money in leveraged buyouts, venture capital, and real estate. Close this "Pandora's Box" approach to investing - **VOTE NO**.

## Rebuttal of Statement for

Increasing the flexibility of trust fund investments will not benefit the taxpayer. In fact it will hurt the taxpayer if the investments turn into losses. This would create pressure to raise taxes to make up for the losses.

Leveraged buyouts and venture capital investments are investing in corporations and are potentially the lending of state credit. Protect school trust funds -- **VOTE NO**.

### Voters' Pamphlet Statement Prepared by:

MICHAEL HEAVEY, State Representative; JACK METCALF, State Senator.

Advisory Committee: WAYNE O. GAFFNEY, Mercer Island; JAMES L. GOBLE, Seattle; WILLIAM FINKBEINER, Kirkland; SIDNEY STARR, Bellevue.





# HOUSE JOINT RESOLUTION 4212

## PROPOSED CONSTITUTIONAL AMENDMENT

Note: The ballot title and explanatory statement were written by the Attorney General as required by law. The complete text of House Joint Resolution 4212 begins on page 17.

Vote cast by the 1987 Legislature on final passage:  
HOUSE: Yeas, 78; Nays, 20; Absent or not voting, 0.  
SENATE: Yeas, 33; Nays, 16; Absent or not voting, 0.

### Statement for

#### ARE LEGISLATORS DOING THE WORK THEY ARE ELECTED TO DO?

Immediately after each election state legislators begin fund-raising and planning for their next election. The current two-year terms for members of the House and four-year terms for state Senators give strong momentum to short-term popular positions which push real problems and their solutions to the future.

#### NEED FOR A CHANGE

Our state Constitution is a dynamic document that, with its many changes, reflects the changing views and needs of our state. One hundred years ago it made good sense to the drafters of our Constitution to set two- and four-year terms for our legislators. After all, they met once every two years for sixty days, probably approved about fifty new laws and then went home by horseback, steamboat and railroad for two years before they met again. Communication was slow and the demands created by public necessity were minimal.

Today, the Legislature meets every year, 105 days in odd years, 60 days in even years, and in numerous overtime sessions. Over 4,000 proposals for new laws are introduced every two years, and 400 to 500 new laws enacted. Our world has grown more complex and longer terms for legislators is the logical result of the more complex issues that must be addressed. This constitutional amendment would prohibit a member of the House of Representatives from running for the state Senate without first giving up their House seat, but would allow a representative to run for other offices without first giving up the House seat.

### Official Ballot Title:

Shall the State Constitution be amended so legislative representatives will be elected for four years and senators for six years?

### The law as it now exists:

All the members of the House of Representatives of the Washington State Legislature are now elected for two-year terms in elections occurring in even numbered years. The members of the Senate of the Washington State Legislature

are elected for four-year terms with approximately one-half of the senatorial seats up for election at each even year election.

### The effect of HJR 4212, if approved into law:

The members of the House of Representatives of the State Legislature would be elected for four-year terms. Approximately one-half of the membership of the House would be elected in each even year election. There are two representatives in each legislative district, so as a transitional measure in the 1988 election, the representative receiving the largest vote in the district would be elected for a four-year term and the other representative would have a two-year term. The legislative position with the initial two-year term would in the 1990 election become a four-year term.

The members of the Washington State Senate of the Legislature would be elected for six-year terms with approximately one-third elected at each election. The 1988 and 1990 elections would result in some senators being elected for four years and others for six years to establish a pattern which by 1992 would result in all senators being elected to six-year terms.

### Statement against

The changes proposed in HJR 4212 are unnecessary and unwise. Lengthening the term of office for our legislators only would make state government more unyielding and less responsive to the will and needs of the people.

The length of our legislators' terms -- closely patterned on the length of congressional terms in office -- has been in effect for 100 years, and there is no valid reason to change it. Extending the duration of office by two years simply would make our elected representatives less accountable to the people of Washington State.

Why? Our citizen Legislature must maintain close ties with the electorate. The current system -- with two-year terms for the House of Representatives and four-year terms for the Senate -- requires constant communication between legislators and the public. The election process gives each voter the opportunity to hear regularly from his lawmakers and grade their performances. Limiting voters' opportunity to cast judgment on their lawmakers flies in the face of a democratic government.

Lengthening the span between elections would measurably weaken the voters' voice in government. It's true that election campaigns often are long, expensive and tiring -- but campaigns also are often the only chance many people have to see and visit with their legislators. Reducing the frequency of elections would curtail the communications that are so vital to a democratic, representative form of government.

Your vote against HJR 4212 will prevent a dilution of your voice in our state government.

### Rebuttal of Statement for

Long-term solutions to problems result from hard work by quality lawmakers -- not longer terms of office.

Yes, our world is growing more complex, but our ability to understand and deal with problems is growing too. The media help keep us well informed on governmental issues and actions. Extending lawmakers' terms won't make the legislative process more effective or easier.

If legislators are spending too much time electioneering, the solution is campaign reform, not longer terms.

For additional information, call (206) 352-4446.

### Rebuttal of Statement against

Longer terms *will* actually make your legislator more effective. Your legislator can better consider the many problems faced; give them careful scrutiny and not be ramrodded into a hasty decision because of momentary political or lobbyist pressure.

A six-year term for your senator will match that of your U.S. Senator. A four-year term for your representative means more attention to your problems, less to fund-raising and campaigning.

Your vote *FOR* HJR 4212 will give you a more responsible and responsive legislator.

#### Voters' Pamphlet Statement Prepared by:

LARRY L. VOGNILD, State Senator; SIMEON R. "SIM" WILSON; State Representative; RUTH FISHER, State Representative.

Advisory Committee: ALAN BLUECHEL, State Senator; GEORGE L. SELLAR, State Senator; PAT SCOTT, State Representative; GEORGE W. WALK, State Representative.

#### Voters' Pamphlet Statement Prepared by:

STUART A. "STU" HALSAN, State Senator; JAMES E. WEST, State Senator; TOM BRISTOW, State Representative.

Advisory Committee: CHUCK SAUVAGE, Washington State Common Cause; C. MONTGOMERY "GUMMIE" JOHNSON, Port Ludlow; CARL MAXEY, Spokane; LAWRENCE KENNEY, President, Washington State Labor Council, AFL-CIO; JACKIE BATTSON, Bellingham.



# HOUSE JOINT RESOLUTION 4220

## PROPOSED CONSTITUTIONAL AMENDMENT

Note: The ballot title and explanatory statement were written by the Attorney General as required by law. The complete text of House Joint Resolution 4220 begins on page 17.

Vote cast by the 1987 Legislature on final passage:  
HOUSE: Yeas, 86; Nays, 11; Absent or not voting, 1.  
SENATE: Yeas, 33; Nays, 16; Absent or not voting, 0.

### Statement for

HJR 4220 is needed to assure adequate schools for our state. Public school construction is funded by a combination of local and state monies. On the average, the state supports about one-half of the cost of each construction project. The local school district voters provide the balance through property taxes or bond issues.

### SCHOOL CONSTRUCTION FUNDS ARE INADEQUATE

For the past twenty years state support for school construction has been met through the sale of timber from trust lands. Three major factors make this level of construction support inadequate:

1. Statewide enrollment growth necessitates new classrooms.
2. The value of trust timber has declined 50 percent in the past four years.
3. Our existing school buildings are wearing out.

### SCHOOL PROJECTS AWAIT STATE FUNDING

Projects representing \$300 million have secured the local share and are awaiting state funds. Some of these projects have been waiting since 1984 and without the passage of HJR 4220 they may still be waiting through the 1990's.

### HJR 4220 WILL PROVIDE FOR OUR CHILDREN'S FUTURE

This constitutional amendment allows for a state property tax levy that will not exceed 35 cents per \$1000 of assessed value and will not be collected for longer than 15 years. The money would be used solely for school construction purposes. Projected revenue from the proposition

### Official Ballot Title:

Shall the constitution be amended to permit a 15 year state-wide special property tax levy exclusively for school construction purposes?

### The law as it now exists:

The state constitution limits tax levies upon real and personal property by the state and all taxing districts, except port districts and utility districts, in any one year to in the aggregate not more than one percent of true and fair value of such property. This constitutional limit on property taxation

would fund approved projects on the waiting list within seven years. In addition, monies deposited into a permanent endowment will provide an ongoing source of funding for future school construction needs.

There are currently over 750,000 children in kindergarten through grade twelve. By 1999, enrollment will grow to over 900,000 students.

Our children deserve safe, healthful, and uncrowded schools.

### Rebuttal of Statement against

YES, HJR 4220! The opposition's argument is misleading. In politics, it is called "smoke and mirrors."

- HJR 4220 does not tamper with the Constitution.
- HJR 4220 will be directed by the voters to exist for 15 years. Period.
- Nobody likes increases in property taxes. But the longer it takes to fix schools, the more it will cost — pure and simple.
- HJR 4220 does not interfere with local levies. The opposition mixes apples and oranges. **Vote YES!**

For additional information, call (206) 448-7348.

### Voters' Pamphlet Statement Prepared by:

ALBERT BAUER, State Senator; DANIEL K. GRIMM, State Representative.

Advisory Committee: BRUCE HOLLAND, State Representative; REN TAYLOR, State Representative; DR. FRANK B. BROUILLET, State Superintendent of Public Instruction; PHILIP B. SWAIN, State Board of Education; TERRY BERGESON, President, Washington Education Association.

can be exceeded by taxing districts only by securing voter approval as delineated in the state constitution.

### The effect of HJR 4220, if approved into law:

The state would be authorized to impose a property tax in excess of to the current constitutional limit, at a rate not to exceed 35 cents per thousand dollars of assessed valuation adjusted to the state equalized value for a period of 15 years. The proceeds of that tax are to be used exclusively for school construction purposes.

Related provisions of the constitution would be altered to harmonize with the added language concerning a state property tax levy for school construction purposes, including

the repeal of authorization to retire bonds from the interest on the permanent common school fund. This also eliminates certain language in the constitution which expired by its own terms at some past period and is now obsolete.

### Statement Against

#### GOOD INTENTIONS, BUT A BAD IDEA

Yes, we have a problem in funding school construction projects. *But while the problem is clear, the solution is not.* Increasing property taxes is the wrong way to solve this problem.

*Should we tamper with the Constitution? No.* Amending the state Constitution for 15 years is inappropriate. The Constitution should be a permanent document protecting Washington citizens. Short-term changes are unwise.

*Do you really believe this tax will be "temporary"?* No. Proponents of this property tax plan say it will last 15 years. . . they claim it will be "temporary." But just think about all the times supposedly "temporary" taxes ended up being made permanent.

*Should we again use property taxes as the easy way to get more money for government?* No. Already this year the Legislature raised the levy lid for school districts, allowing higher property tax rates. The Legislature also allowed libraries to seek local levies that would increase taxes further. Another significant increase in our property tax burden is the last thing we need.

*Should the state pre-empt local use of property taxes?* No. Property taxes are intended to fund local government activities . . . such as road maintenance, law enforcement, fire protection, emergency medical assistance, and so on. For the state to increase our property tax burden will make it harder for local governments to win approval of the levies they must have to operate effectively.

*We should reject this proposal and keep property taxes as a local option and preserve local control.*

### Rebuttal of Statement for

The problem of school construction funding is not new; it has been on the horizon for several years. *And a temporary constitutional amendment is not the answer.*

*This property tax increase would require property taxpayers to pay for school construction projects throughout the state. . . in addition to projects they are already paying for in their own district.*

*We need a better way to pay for necessary school construction. . . not just higher property tax rates.*

### Voters' Pamphlet Statement Prepared by:

EUGENE V. PRINCE, State Representative.





## COMPLETE TEXT OF Referendum Bill 41

AN ACT Relating to the federal reserve system; creating new sections; and providing for submission of this act to a vote of the people.  
BE IT ENACTED BY THE LEGISLATURE OF THE STATE OF WASHINGTON:

**NEW SECTION.** Sec.1. (1) A sound money system is absolutely vital to a free people. Symptoms of an unsound money system abound: Budget deficits, recurring recession cycles, farm foreclosures, business bankruptcies, bank, savings and loan, and insurance company failures, trade deficits, and dramatic fluctuations in interest rates, inflation levels, and unemployment statistics. These represent a clear and present danger to the people and to the government of the state of Washington and the United States of America.

(2) The Federal Reserve Act of 1913, and other acts of Congress, purport to delegate the nation's monetary authority to the Federal Reserve System, with no oversight or control by any elected body or official. The Federal Reserve Board is assumed to have the power to create money and thus exercise absolute control over the economic activity of this nation, whereas the United States Constitution nowhere authorizes Congress to delegate such power.

(3) The Federal Reserve Act of 1913, and other acts of Congress, purport to delegate authority, without oversight or control, under which large, private United States multinational banks have made unrestricted loans all over the world which, now in danger of default, threaten the United States of America with a collapse of its whole banking structure.

**NEW SECTION.** Sec 2. It is hereby the declared intent of the state of Washington, and the counsel appointed by the legislature is hereby directed, to cause to be filed in the original jurisdiction of the supreme court of the United States: (1) An action challenging the constitutionality of the delegation to the federal reserve system of the power to create money, and thus the power to exercise absolute control over the economic activity of this nation, and (2) An action challenging the delegation of authority without oversight, under which large, private multinational banks have made unrestricted foreign loans which, if they default, threaten the United States of America with a collapse of its whole banking structure.

**NEW SECTION.** Sec. 3. This act shall be submitted to the people for their adoption and ratification, or rejection, at the next succeeding general election to be held in this state, in accordance with Article II, section 1 of the state Constitution, as amended, and the laws adopted to facilitate the operation thereof.



## COMPLETE TEXT OF Initiative Measure 92

AN ACT Relating to the consumer protection act; and adding a new section to chapter 19.86 RCW.

BE IT ENACTED BY THE PEOPLE OF THE STATE OF WASHINGTON:

**NEW SECTION.** Sec. 1. A new section is added to chapter 19.86 RCW to read as follows:

(1) It shall be an unfair or deceptive act or practice or unfair method of competition in the conduct of trade or commerce under RCW 19.86.020 for any physician to:

(a) Charge, collect, or attempt to collect for medical services provided to any patient eligible for medical insurance benefits for the aged and disabled under the federal medicare program, part B of Title XVIII of the federal social security act, any amount in excess of the reasonable charge for such services as determined under part B of Title XVIII of the federal social security act;

(b) Fail to enroll at the earliest possible time, or fail to continue, as a participating physician under the supplementary medical insurance benefits for the aged and disabled part of the federal medicare program, part B of Title XVIII of the federal social security act; and

(c) Fail to post in a conspicuous place in his or her place of business a summary of the provisions of this section in accordance with such rules adopted by the attorney general to assure that patients are given reasonable notice of their rights under this section.

(2) This section does not apply to a physician who certifies in writing to the attorney general of the state of Washington that he or she does not and will not provide medical services covered under the supplementary medical insurance benefits for the aged and disabled part B of the federal medicare program to persons eligible for such benefits except in emergency situations or when such treatment would otherwise be required by the standards of the profession.

(3) For the purposes of this section the terms used in this section shall be defined consistently with the definitions for such terms contained in Title XVIII of the federal social security act.

**NEW SECTION.** Sec.2. If any provision of this act or its application to any person or circumstance is held invalid, the remainder of the act or the application of the provision to other persons or circumstances is not affected.



## COMPLETE TEXT OF Senate Joint Resolution 8207

BE IT RESOLVED, BY THE SENATE AND HOUSE OF REPRESENTATIVES OF THE STATE OF WASHINGTON, IN LEGISLATIVE SESSION ASSEMBLED:

THAT, At the next general election to be held in this state there shall be submitted to the qualified voters of the state for their approval and ratification, or rejection, an amendment to Article IV, section 7 of the Constitution of the state of Washington to read as follows:

Article IV, section 7. The judge of any superior court may hold a superior court in any county at the request of the judge of the superior court thereof, and upon the request of the governor it shall be his duty to do so. A case in the superior court may be tried by a judge, pro tempore, who must be a member of the bar, agreed upon in writing by the parties litigant, or their attorneys of record, approved by the court and sworn to try the case. However, if a previously elected judge of the superior court retires leaving a pending case in which the judge has made discretionary rulings, the judge is entitled to hear the pending case as a judge pro tempore without any written agreement.

BE IT FURTHER RESOLVED, That the secretary of state shall cause notice of the foregoing constitutional amendment to be published at least four times during the four weeks next preceding the election in every legal newspaper in the state.





## COMPLETE TEXT OF Senate Joint Resolution 8212

BE IT RESOLVED, BY THE SENATE AND HOUSE OF REPRESENTATIVES OF THE STATE OF WASHINGTON, IN LEGISLATIVE SESSION ASSEMBLED:

THAT, At the next general election to be held in this state there shall be submitted to the qualified voters of the state for their approval and ratification, or rejection, an amendment to Article XVI, section 5 of the Constitution of the state of Washington to read as follows:

Article XVI, section 5. Notwithstanding the provisions of sections 5 and 7 of Article VIII and section 9 of Article XII or any other section or article of the Constitution of the state of Washington, the permanent common school fund and other public land permanent funds of this state may be invested as authorized by law.

BE IT FURTHER RESOLVED, That the secretary of state shall cause notice of the foregoing constitutional amendment to be published at least four times during the four weeks next preceding the election in every legal newspaper in the state.



## COMPLETE TEXT OF House Joint Resolution 4212

BE IT RESOLVED, BY THE SENATE AND HOUSE OF REPRESENTATIVES OF THE STATE OF WASHINGTON, IN LEGISLATIVE SESSION ASSEMBLED:

THAT, At the next general election to be held in this state there shall be submitted to the qualified voters of the state for their approval and ratification, or rejection, an amendment to Article II of the Constitution of the state of Washington by repealing section 4 thereof and amending Article II, section 5 and Article II, section 6 of the state Constitution to read as follows:

Article II, section 4. Section 4, Article II of the Constitution of the state of Washington is repealed.

Article II, section 5. ~~((The next election of the members of the house of representatives after the adoption of this Constitution shall be on the first Tuesday after the first Monday of November, eighteen hundred and ninety, and thereafter, members of the house of representatives shall be elected biennially and their term of office shall be two years; and each election shall be on the first Tuesday after the first Monday in November, unless otherwise changed by law.))~~ Members of the house of representatives shall be elected for terms of four years with as near to one-half of their number as is mathematically possible retiring every two years. At the general election to be held on the first Tuesday next succeeding the first Monday in November 1988, the candidate in each representative district who receives the greatest number of votes shall be elected for a term of four years and thereafter for a term of four years, and at the same election the winning candidate in each representative district who receives the second highest number of votes shall be elected for a term of two years and thereafter for a term of four years.

Elections of the members of the house of representatives shall be on the first Tuesday after the first Monday of November in each even-numbered year unless otherwise changed by law. Persons elected to the house of representatives shall serve four-year terms unless they resign or seek other legislative office.

Article II, section 6. ~~((After the first election))~~ The senators shall be elected by single districts of convenient and contiguous territory, ((at the same time and)) in the same manner as members of the house of representatives are required to be elected; and no representative district ((shall)) may be divided in the formation of a senatorial district. They shall be elected for ((the)) terms of ((four)) six years, ((one-half)) with as near to one-third of their number retiring every two years. The senatorial districts shall be numbered consecutively, and ((the senators chosen at the first election had by virtue of this Constitution, in odd-numbered districts, shall go out of office at the end of the first year; and the senators, elected in the even-numbered districts, shall go out of office at the end of the third year)) shall be divided into three groups: The first group to consist of every first district, the second to consist of every second district, and the third to consist of every third district. For those districts in which senators are to be elected in 1988 the term of office shall be four years for each district in the first and second groups and six years for each district in the third group; and thereafter in each district the term of office shall be six years. For those districts in which senators are to be elected in 1990, the term of office shall be four years for each district in the first group and six years for each district in the second and third groups; and thereafter in each district the term of office shall be six years.

BE IT FURTHER RESOLVED, That the secretary of state shall cause notice of the foregoing constitutional amendment to be published at least four times during the four weeks next preceding the election in every legal newspaper in the state.



## COMPLETE TEXT OF House Joint Resolution 4220

BE IT RESOLVED, BY THE SENATE AND HOUSE OF REPRESENTATIVES OF THE STATE OF WASHINGTON, IN LEGISLATIVE SESSION ASSEMBLED:

THAT, At the next general election to be held in this state there shall be submitted to the qualified voters of the state for their approval and ratification, or rejection, an amendment to Article IX, section 3 and an amendment to Article VII, section 2 of the Constitution of the state of Washington to read as follows:

Article IX, section 3. (1) The principal of the permanent common school fund as the same existed on June 30, 1965, and including any revenue dedicated to the fund from a state property tax shall remain permanent and irreducible.

(2) The ~~((said))~~ permanent common school fund shall consist of the principal amount ~~((thereof existing on June 30, 1965))~~ under subsection (1) of this section, and such additions thereto as may be derived after June 30, 1965, from the following named sources, to wit: Appropriations and donations by the state to this fund; donations and bequests by individuals to the state or public for common schools; the proceeds of lands and other property which revert to the state by escheat and forfeiture; the proceeds of all property granted to the state when the purpose of the grant is not specified, or is uncertain; funds accumulated in the treasury of the state for the disbursement of which provision has not been made by law; the proceeds of the sale of stone, minerals, or property other than timber

and other crops from school and state lands, other than those granted for specific purposes; all moneys received from persons appropriating stone, minerals or property other than timber and other crops from school and state lands other than those granted for specific purposes, and all moneys other than rental recovered from persons trespassing on said lands; five per centum of the proceeds of the sale of public lands lying within the state, which shall be sold by the United States subsequent to the admission of the state into the Union as approved by section 13 of the act of congress enabling the admission of the state into the Union; the principal of all funds arising from the sale of lands and other property which have been, and hereafter may be granted to the state for the support of common schools. The legislature may make further provisions for enlarging said fund.

(3) There is hereby established the common school construction fund to be used exclusively for the purpose of financing the construction of facilities for the common schools. The sources of said fund shall be: ~~((1))~~ (a) Those proceeds derived from the sale or appropriation of timber and other crops from school and state lands subsequent to June 30, 1965, other than those granted for specific purposes; ~~((2))~~ (b) the interest accruing on said permanent common school fund from and after July 1, 1967, together with all rentals and other revenues derived therefrom and from lands and other property devoted to the permanent common school fund from and after July 1, 1967; and ~~((3))~~ (c) such other sources as the legislature may direct. That portion of the common school construction fund derived from interest on the permanent common school fund may be used to retire ~~((such))~~ bonds ~~((as may be))~~ authorized by law prior to January 1, 1987, for the purpose of financing the construction of facilities for the common schools.

~~((The interest accruing on the permanent common school fund together with all rentals and other revenues accruing thereto pursuant to subsection (2) of this section during the period after the effective date of this amendment and prior to July 1, 1967, shall be exclusively applied to the current use of the common schools.))~~

(4) To the extent that the moneys in the common school construction fund are in excess of the amount necessary to allow fulfillment of the purpose of said fund, the excess shall be available for deposit to the credit of the permanent common school fund or available for the current use of the common schools, as the legislature may direct.

Article VII, section 2. Except as hereinafter provided and notwithstanding any other provision of this Constitution, the aggregate of all tax levies upon real and personal property by the state and all taxing districts now existing or hereafter created, shall not in any year exceed one per centum of the true and fair value of such property in money: PROVIDED, HOWEVER, That nothing herein shall prevent levies at the rates now provided by law by or for any port or public utility district. The term "taxing district" for the purposes of this section shall mean any political subdivision, municipal corporation, district, or other governmental agency authorized by law to levy, or have levied for it, ad valorem taxes on property, other than a port or public utility district. Such aggregate limitation or any specific limitation imposed by law in conformity therewith may be exceeded only

(a) By any taxing district when specifically authorized so to do by a majority of at least three-fifths of the electors thereof voting on the proposition to levy such additional tax submitted not more than twelve months prior to the date on which the proposed levy is to be made and not oftener than twice in such twelve month period, either

at a special election or at the regular election of such taxing district, at which election the number of persons voting "yes" on the proposition shall constitute three-fifths of a number equal to forty per centum of the total votes cast in such taxing district at the last preceding general election when the number of electors voting on the proposition does not exceed forty per centum of the total votes cast in such taxing district in the last preceding general election; or by a majority of at least three-fifths of the electors thereof voting on the proposition to levy when the number of electors voting on the proposition exceeds forty per centum of the total votes cast in such taxing district in the last preceding general election: PROVIDED, That notwithstanding any other provision of this Constitution, any proposition pursuant to this subsection to levy additional tax for the support of the common schools may provide such support for a two year period and any proposition to levy an additional tax to support the construction, modernization, or remodelling of school facilities may provide such support for a period not exceeding six years;

(b) By any taxing district otherwise authorized by law to issue general obligation bonds for capital purposes, for the sole purpose of making the required payments of principal and interest on general obligation bonds issued solely for capital purposes, other than the replacement of equipment, when authorized so to do by majority of at least three-fifths of the electors thereof voting on the proposition to issue such bonds and to pay the principal and interest thereon by an annual tax levy in excess of the limitation herein provided during the term of such bonds, submitted not oftener than twice in any calendar year, at an election held in the manner provided by law for bond elections in such taxing district, at which election the total number of persons voting on the proposition shall constitute not less than forty per centum of the total number of votes cast in such taxing district at the last preceding general election: PROVIDED, That any such taxing district shall have the right by vote of its governing body to refund any general obligation bonds of said district issued for capital purposes only, and to provide for the interest thereon and amortization thereof by annual levies in excess of the tax limitation provided for herein, AND PROVIDED FURTHER, That the provisions of this section shall also be subject to the limitations contained in Article VIII, Section 6, of this Constitution;

(c) By the state or any taxing district for the purpose of paying the principal or interest on general obligation bonds outstanding on December 6, 1934; or for the purpose of preventing the impairment of the obligation of a contract when ordered so to do by a court of last resort;

(d) By the state for a property tax at a rate not to exceed thirty-five cents per thousand dollars assessed valuation adjusted to the state equalized value, levied for a maximum of fifteen years and used exclusively for school construction purposes.

BE IT FURTHER RESOLVED, That the foregoing amendment shall be construed as a single amendment within the meaning of Article XXIII, section 1 of this Constitution.

The legislature finds that the changes contained in the foregoing amendment constitute a single integrated plan for funding common school capital projects. If the foregoing amendment is held to be separate amendments, this joint resolution shall be void in its entirety and shall be of no further force and effect; and

BE IT FURTHER RESOLVED, That the secretary of state shall cause notice of the foregoing constitutional amendment to be published at least four times during the four weeks next preceding the election in every legal newspaper in the state.





## BALLOT TITLE

### PROPOSITION NO. 1 REGIONAL HEALTH CARE CAPITAL IMPROVEMENTS BONDS-\$99,800,000

Shall King County, to finance Harborview Medical Center's trauma center and certain capital improvements at Harborview and Pacific Medical Centers, and the Health Department's Columbia, East, South, Southwest and Renton Clinics, as provided in King County Ordinance 8196, issue up to \$99,800,000 of unlimited tax general obligation bonds with a maximum term of 20 years, on which principal and interest shall be payable from annual property tax levies in excess of regular property tax levies?

## Explanatory Statement:

If approved by the voters, Proposition No. 1 would authorize King County to issue up to \$99,800,000 of unlimited tax general obligation bonds, maturing within 20 years, to finance all or part of the following regional health care capital improvement projects within King County:

(1) At Harborview Medical Center, expansion and consolidation of the emergency trauma center and other key diagnostic departments; expansion, improvement and relocation of patient and visitor services; and modernization, expansion and consolidation of inpatient and out-patient facilities.

(2) At Pacific Medical Center, structural repairs and/or additions to bring its Beacon Hill "Tower Building" into compliance with Seattle's seismic and other building codes.

(3) Construction of three new public health centers in Seattle, east King County and south King County, and expansion, remodeling and repairs to existing public health centers in Renton and southwest King County.

The maximum amounts of bond principal proceeds to be available to these projects shall be: Harborview - \$75,465,000; Pacific Medical Center - \$9,315,000; and public health centers - \$15,020,000.

Unless paid from other sources, both principal of and interest on the bonds would be paid from annual excess property tax levies upon all taxable property within King County, without limitation as to rate or amount.

To be approved, this proposition must receive "yes" votes from at least 60% of those voting on it, and the total number of persons voting on this proposition must equal at least 40% of those in King County who voted at the last general state election.

## Statement for

**SAVING LIVES:** Life-threatening injuries can strike anyone at anytime. For the more than 3,000 accident victims treated at Harborview each year, the difference between full recovery and a lifetime of impairment or death can be a matter of seconds. Harborview's trauma team, while nationally recognized, is forced to lose precious seconds because essential facilities — the emergency room, surgery, radiology, laboratories and the air ambulance heliport — are spread throughout the hospital. Blood test labs, for example, are a block and a half and two floors from the emergency room.

Proposition 1 would provide a modern, efficient Trauma Center at Harborview. Essential emergency services would be consolidated and readily available—making the difference for many accident victims whose lives hang in the balance.

**MEETING HEALTH CARE NEEDS IN OUR COMMUNITY:** Demands on our Health Department clinics to provide basic and preventative care cannot be met without Proposition 1. These clinics, located in communities with rapid population growth, are already straining to provide services to those most in need—especially children and seniors.

When low-income patients around the county need specialty medical care, they are referred by the community clinics to Pacific Medical Center. PMC must make structural improvements to keep these vital services available.

**A SMALL PRICE TO PAY:** Proposition 1 asks voters to commit only 11 cents per \$1,000 of assessed property value a year to these public health care facilities over the next 20 years.

**Vote yes on 1 — a small price to pay when it's about saving lives.**

## Rebuttal of statement against

Harborview is THE treatment facility for people from all over King County with the most serious, life-threatening injuries. **It must be modernized.**

Harborview is one of the few county hospitals that requires no operating subsidies. These improvements will keep Harborview self supporting. The Seattle Area Hospital Council endorses Proposition 1 because **it's cost effective.**

SOS is also wrong about Pacific Medical Center. If the funds aren't committed to PMC, the bonds won't be issued.

STATEMENT PREPARED BY: WARREN G. MAGNUSON, JOEL PRITCHARD, JAMES WICKWIRE

## Statement against

"...the United States often has worse health than Britain despite spending three times as much per head on health care."  
(*London Economist* 8/22/87, page 47)

The Shareholders of Seattle (SOS) urge you to vote NO on Proposition 1, the Regional Health Care Capital Improvements Project.

The crisis of medical care here is a crisis of costs.

Why? Because we in the United States are spending progressively more for medical **buildings** than we are for medical **services**. That is precisely the situation here. We're being asked to allocate \$100 million for capital projects financed by a bond issue, with not a single penny going for operating or maintaining the subsequent improvements. With interest, this bond issue will cost the taxpayer a minimum of \$200 million. **The effect is higher medical costs for all whether one pays the bill directly or through insurance.**

Problems that SOS is asking you to consider are:

1. The Harborview Long Range Capital Improvement Plan gives no non-capital alternatives. There is no documented data to show that the proposed capital expenditures will attain the efficiencies claimed.

2. The Pacific Medical Center (PMC) is managed by a Public Development Authority. As such, the funding for PMC is conditional (see Ordinance Sec. 4). Passage of this measure does not necessarily mean that PMC will get the funds. If it doesn't, the ordinance does not say what will happen to the money. **Once again, we're being asked to sign a blank check.**

## Rebuttal of statement for

**Vote NO on Proposition 1.**

**Harborview:** Alleged "inefficiency" is a management problem certainly not requiring a bond issue.

**Pacific Medical Center:** PMC has been cutting back on health care. Why??

Medical costs have increased because facilities have expanded beyond the ability to staff, equip and maintain them. Developmental costs will be passed on to patients. How can more lives be saved and health care provided if people can't afford the services?

Vote NO on 1.

STATEMENT PREPARED BY: DORIS BAXTER BURNS, BOB HEGAMIN, BARBARA ZEPEDA





# King County Assessor



**Jeanette  
BERLEEN  
Republican**

Jeanette Berleen has been a real estate appraiser for three and one half years, an accountant and lead budget analyst, and has served laudably in our Washington State House of Representatives. She has been a member of the Burien, White Center, and West Seattle Chambers of Commerce, Highline United Methodist Church, and Citizens to Save Puget Sound.

Jeanette Berleen was born on November 2, 1952. She attended Highline Community College and the University of Washington, where she received a Bachelors degree in Business Administration in 1976. Jeanette Berleen has experience in management, budgeting, appraisal, and working with people.

I plan to make the Assessor's Office more accessible, informative, and efficient. The office can be made more efficient by making property tax appeals' decisions good for more than just one year. Also, by assigning appraisal crews to specific areas, they will become more familiar with the neighborhoods they appraise.

The office can be more informative by letting people know about exemptions they are eligible for in a timely fashion. Then, people will not be taken advantage of by paying more than their fair share of property taxes. For example, taxpayers can get an exemption for added value of remodeling on single family residences, up to a limit, by filing a form with the Assessor's office. I will work with the building department of King County and all city building departments to have the proper forms automatically issued with all residential remodeling building permits.

Renters, you have a stake in property taxes. Your rent will probably increase by as much as any new taxes paid by the owner. The Assessor's office can be more informative by letting people know how much bonds and levies are going to increase property taxes, before they vote on them. Then the decision on whether or not to pass these issues is up to an even more informed electorate, both owners and renters.

The office of Assessor can be made more accessible by opening a public information counter at the existing Eastside Assessor's Office, and by working with libraries to have property tax information stations located in them.

You have a right to know about tax exemptions and why your property is appraised the way it is. As Assessor, I will make sure property is appraised fairly, and I will accommodate the needs of all citizens.

Thank you for your interest, concern, and your vote.

CAMPAIGN MAILING ADDRESS: P.O. Box 48214, Seattle, WA 98148 PHONE NUMBER: 623-6063



**Ruthe  
RIDDER  
Democrat**

Ruthe Ridder is seeking reelection as King County Assessor. In 1983 she defeated three-term incumbent Harley Hoppe. Ruthe has received high marks during her first term. Headlines such as, *HERE'S AN ASSESSOR WHO HELPS THE TAXPAYER* (Seattle P.I. 2/23/86) have been typical.

Ruthe was born June 13, 1929; Bachelor's, Psychology, University of Washington; served 9 years State Senate, Chair Labor Committee, member Ways/Means, Rules and Legislative Budget Committees; Vice President Washington State Association of County Assessors, member Rainier Chamber of Commerce and League of Women Voters.

*Ruthe has won each election she's campaigned in.*

King County Assessor Ruthe Ridder keeps her word.

Four years ago, she promised to run an open, professional and non-political Department of Assessments. Ruthe Ridder has kept these promises and more.

Ruthe has quietly and efficiently brought fairness to the assessment process. Under Ruthe Ridder, the valuation process is handled by a professional staff without politics getting in the way. There are no more scandals. No private detectives following Department employees. Every property is treated equally.

In keeping her word to open the office, Ruthe has: *Initiated taxpayer assistance meetings throughout King County which have been very well attended. Over 3,000 taxpayers have received personal help in understanding their property tax system.*

*Distributed over 10,000 copies of "Tax Facts", a free booklet on Department programs, including information on how to obtain property tax exemptions and appeal property values.*

*Made it easy for the public to get information from the Assessor's Office on any property.*

*Made comparable sales data available on computer terminals.*

Ruthe has accomplished all of this while holding to a no growth budget. She looks to the next 4 years to sustain the role of your independent Assessor to protect and enhance property tax fairness.

Ruthe has reached out to property owners who need assistance and are eligible for property tax relief.

*She initiated a program of immediately informing taxpayers whose property has been damaged of their right to property tax relief.*

*She successfully sought legislation to increase interest paid to taxpayers who receive refunds.*

*She developed an aggressive outreach program to inform seniors, the disabled and home remodelers of tax-exemption programs.*

Ruthe's honesty and integrity have earned her enormous respect. On November 3rd, your continued support of Ruthe Ridder will keep the office open, accessible and fair.

CAMPAIGN MAILING ADDRESS: P.O. Box 2369, Seattle, WA 98111 PHONE NUMBER: 467-6293

# King County Council District No. 6



**Bruce  
LAING  
Republican**

Born August 17, 1932 in Seattle. Bachelor of Arts in English Literature, Seattle University; Master of Urban Planning, University of Washington. Charter Member American Institute of Certified Planners. Seventeen years experience as professional planner with engineering, planning and development firms and with the U.S. Department of Housing and Urban Development. Chief Zoning and Subdivision Examiner for King County, 1970-79. Served on Active Duty with the U.S. Navy as a Naval Flight Officer. Retired from Naval Reserve with Rank of Captain. Married to Brigid (Flood) Laing. Three children: Jim, Colleen and Greg.

Serving second term, King County Councilman.

For the past eight years I have had the honor of serving as your King County Councilman. I have worked hard for you and have found the job both challenging and satisfying. I'd like your vote for my re-election to the County Council.

During these past eight years I have also served on the Metro Council and on the Executive Board of the Puget Sound Council of Governments. My fellow elected officials have honored me by electing me to the following chairmanships: Chairman King County Council; Chairman King Subregional Council; Chairman Metro Water Quality Committee; Chairman Joint Metro/PSCOG Multi-Corridor Steering Committee.

I have sponsored many County ordinances and motions which benefit our area, including: Purchase of 1750 acres as part of the Cougar Mountain Regional Wildlands Park; Purchase of the Beaver Lake Natural Resource Park; Placement of the Issaquah Skyport bond issue on the ballot; Mitigation of impacts from the Cedar Hills Landfill; Development of the Maplewood Heights Park and school walkway system; Development of Petrovitsky Park; Widening of Petrovitsky Road, Coal Creek Parkway, and East Lake Sammamish Parkway.

I have also sponsored legislation on significant County-wide issues, including: Publication of a King County Voters Pamphlet (which you are now reading); Preparation of siting plans for garbage disposal facilities, including energy resource recovery plants; Establishment of a Surface Water Management Utility.

There are many challenging issues facing the County which I would like to address in the next four years, such as: The adoption of a County Human Services Plan; Modernization of the County Zoning and Subdivision Codes; Capping of toxicant hot spots in Lake Washington and Puget Sound; Increasing transit service between suburban centers; Planning for a light-rail system.

I appreciate your past support. Now I ask your support for the future.

CAMPAIGN MAILING ADDRESS: 13430 S.E. 43rd Street, Bellevue, WA 98006 PHONE NUMBER: 747-1369

**Democrat - No Candidate Filed**

**Robert W.  
WINSOR  
(No Statement Submitted)**

**King County Court of Appeals  
Div. 1, Dist. 1 Judge, Pos. 1**







## Port Of Seattle Commissioner District No. 3



**Paige  
MILLER**

Paige Miller practiced business law in Seattle for several years before joining the Seattle City Council staff as a legislative assistant and policy analyst. As President of the Queen Anne Community Council, Paige led in negotiating a cooperative agreement between the Port and nearby neighborhoods which permitted moderate expansion of Terminal 91 while protecting the neighborhoods from harmful impacts. Paige also served on the committee which developed the Port's long-range harbor plan.

Born January 5, 1949, Paige is a graduate of Brown University and Yale Law School. She and her husband Bruce Johnson, have two children, Marta and Winslow.

The Port of Seattle brings 80,000 jobs to King County. That is the Port's mission. Some of those jobs are on the waterfront, some are at SeaTac. Many more are related to Port activity. If the Port fails, we all suffer.

The Port needs effective new leadership. It needs someone who can listen, someone who can work with people, and someone who can get the job done. I began working on Port issues six years ago as a community leader, helping the Port and my neighborhood to resolve a bitter dispute over a proposed development project at Terminal 91. Later, I served on the committee that developed the Port's long-range strategy for the harbor's cargo-handling facilities. Through those experiences I learned the Port's business and worked with the people, inside and outside the Port, who are involved in its daily activities.

I want to use my knowledge of the Port and my experience in working with people in the community to help the Port work on some important problems.

The Port needs to be more open and accountable to the public. It needs to improve its customer service and customer relations or we will lose important customers to our competitors. The Port must be open and fair in hiring and contracting. And it must move forward with three important economic development projects - a cruiseship terminal, an international trade center and expanded moorage for the fishing fleet.

Also, the Port must take steps immediately to reduce the level of airplane noise in our neighborhoods. Noise can be reduced through enforcement of existing regulations, and through new incentives and regulations which push for the use of quieter, new-generation airplanes at SeaTac. The Port needs working, caring leadership. I ask for your vote on November 3rd.

CAMPAIGN MAILING ADDRESS: 711 West Kinnear Place, Seattle, WA 98119 PHONE NUMBER: 281-8674



**George  
KARGIANIS**

George Kargianis, a successful businessperson and attorney (practicing 34 years), is a senior partner in his downtown Seattle law firm, and resides with his family in Bellevue where he served as Bellevue School Board President. Kargianis, former Washington Utilities and Transportation Commission Chief Examiner, is an expert on maritime, transportation, and international trade issues, an appointed mediator, and experienced negotiator.

A native Washingtonian and University of Washington Law School graduate, Kargianis is a former Washington State Bar Association Governor, a fellow of the prestigious American College of Trial Lawyers, and sits on numerous arts and community boards and commissions.

I bring to the Port experience, knowledge and commitment to public service. Shortly, the Port will make a number of critical policy decisions which will affect our economy, neighborhoods, and quality of life for decades to come.

*FIRST* and foremost, the Port Commission must be a body capable of projecting a positive image. As a mediator, negotiator and consensus builder, I have the background to be the catalyst for harmony and consensus between the commission and staff.

*SECOND*, the Port must be a better neighbor, that means it has to be a better listener. *THIRD*, many of our neighborhoods, and rightfully so, are concerned about the noise from air traffic and Port facilities. The Port needs to ensure noise abatement policies are developed and utilized.

*FOURTH*, Fisherman's terminal is the home Port for our two billion dollar per year fishing industry. We must meet the needs of this industry with facilities, goods, and services. *FIFTH*, Northwest ports need to develop more interport cooperation on a regional basis to compete successfully against out of state ports.

*SIXTH*, we need to better market the Port. *SEVENTH*, the Port must continue to play a key role in the economic development of King County.

I am running because I believe I offer what the Port and our citizens need from a Commissioner: an experienced steady hand, a proven mediator and negotiator, an authority on issues of major concern to the Port, a successful business-person and a respected community leader. I have worked with and represented both business and labor.

If I can answer any questions please contact me at 4700 Columbia Center, Seattle 98104 or 624-5370. As your new Port Commissioner, I will work hard to accomplish the goals I've set out above. I would appreciate your vote. Thank you.

CAMPAIGN MAILING ADDRESS: 47th Floor, Columbia Center, Seattle, WA 98104-7010 PHONE NUMBER: 624-5370



**Don  
DAVIDSON**

Don, age 48, has lived in Bellevue since 1967 when he established his practice in family dentistry. Named 1987's "Citizen Dentist of the Year" by the Washington State Dental Association is one recognition of his vast community service which has included: Member, Bellevue City Council; Trustee, Overlake Hospital; Former President, Bellevue Chamber of Commerce; Coach, Boys' & Girls' Clubs; Commissioner, Boy Scouts; Fiscal Committee, Bellevue School District. Don, Sue and three children reside in Woodridge.

Finding solutions to challenges facing Bellevue has been the hallmark on Don Davidson's service as the incumbent member of the City Council in Position #1.

He has provided expertise to the Council in the area of Finance, and is well known for his independent thinking and reasoned approach to the making of policy to safeguard the high quality of life enjoyed by the residents of Bellevue. He is accessible, open to new ideas, listens carefully to input from all sources, and makes decisions in a forthright manner in recognition of needs of his constituency, the citizens of Bellevue.

Don has provided leadership in the formation of the 5-Year Financial Forecast. He encouraged the development of the Management Performance Audit Program which will provide information for proper control of the Operating Budget. He continues in a leadership role in both the Capital Improvement Program Budget and Operational Budget process.

He supports the Neighborhood Traffic Control Program to make our neighborhood streets safer, and the Overlake Transportation Study to correct congestion at interstate 520 - 148th corridor.

**CAMPAIGN MAILING ADDRESS: 11201 S.E. 8th, #152, Bellevue, WA 98004 PHONE NUMBER: 455-4770**



**Jim  
KEEFFE**

34 year Bellevue resident; 14 continuous years' community service; City Council, 4 years, East Bellevue Community Council, 10 years (4 terms as chairman). Boeing: market/airline analyst, sales engineer, regional sales manager, C.A.D. Retired USAF officer, pilot, commander, staff officer. Aerial combat in Korea and Germany (WWII P.O.W.). USAF and R.O.T.C. instructor, 7 years; United Air Lines pilot; degrees from UCLA and BCC, honor society member; nominated for JC's TOYM award; married, 6 children.

Quality of life for the residents should be the Council's number one priority. My goals continue to be increased police service, residential neighborhood protection and enhancement, traffic solutions, additional bus transit, lean budgeting, (the rates of growth of the city's budget and staffing have far outstripped population growth), efficiency of city services, enforcement of city codes, completion of the State mandated elements of the Comprehensive Plan, a Code of Ethics for the council members, open city government conducted publicly (executive sessions are *not* mandated by state law), public referendums on big ticket items such as the Bellevue dam (2+ million spent to date), the proposed Supersonics arena and convention center (1/2 million spent to date), a partial moratorium on new downtown commercial and office construction until a workable solution to the city's traffic problems has been achieved, and a commuter tax to help pay for the enormous increases in services resulting from Bellevue's rapid growth.

I need your support to achieve these goals.



**Jean  
CARPENTER**

A public relations consultant with a Master's degree in Communication, Jean Carpenter has impressive credentials for City Council. City of Bellevue and community experience includes: Park Board Commissioner; Human Services Advisory Committee; Government Structure Committee; Bond Issue Campaign Manager; Secretary, Bellevue Art Museum Board; Youth Eastside Services Board; Episcopal Diocesan and Parish Commissions; Somerset Community Association; Vice President, American Association of University Women.

Married, she and Scott have two children; Jean's birthdate is 1/29/45.

Whether we are businessmen and women concerned with economic vitality, or parents concerned with neighborhoods in which our children are growing up, or retirees concerned about safe, convenient amenities, we want to be a community that provides the best quality of life possible.

To succeed in this goal we must find ways to make our differences work for the good of all. How does this happen?

It comes from a shared commitment . . . a commitment to listen, a commitment to learn, and a commitment to reason; and, from our elected officials, a commitment to lead in an open and responsible manner.

Bellevue is at a crossroads. We love our small town qualities, but we're faced with large, urban challenges. Our City Council must lead by becoming more of a policy body, reinstating the committee system and concentrating on quality basic city services.

My primary concerns are: assuring affordable government (knowing full costs before we enter a project), preserving our unique character (city in a park meaning more than a slogan), and providing a responsive government.

**CAMPAIGN MAILING ADDRESS: 11034 S.E. 28th Place, Bellevue, WA 98004 PHONE NUMBER: 641-7265**



**Tom  
HANSEN**

A Seattle native, Tom Hansen grew up on Beacon Hill, graduated from Cleveland High School, and attended Washington State University.

After four years in the U.S. Navy Medical Corps, Tom spent ten years in sales and management in the surgical instrument field; then he joined the franchise industry in sales development, ownership, and consulting.

Tom has served the City of Bellevue as Mayor Pro-Tem and City Councilman for the last four years.

During four years as Bellevue's Mayor Pro-Tem and City Councilman, Tom Hansen has demonstrated the skills of an *effective elected official*. He is *responsive, open-minded, fair, and decisive*. With his leadership, the council has made large strides toward making Bellevue a "model city".

Tom led the effort to start the largest program of park acquisition and development in the city's history, a giant step towards the plan for a "city within a park".

In most of the hottest issues facing the city, Tom was put in the position of casting the swing vote and his decisions have proven to be on target and in the best interests of the entire community. Through his *independent* position, he represents the vast majority of hard-working, taxpaying, concerned Bellevue citizens.

Tom Hansen has shown the ability to study the facts and make decisions, *good decisions*. He has earned the citizens trust and confidence. Now, with four years of *experience*, he will continue to do a good job. Let's *re-elect Tom Hansen* to the Bellevue City Council.

**CAMPAIGN MAILING ADDRESS: P.O. Box 402, Bellevue, WA 98009 PHONE NUMBER: 881-3027**





# City Of Bellevue Council

P  
O  
S  
I  
T  
I  
O  
N  
3



**Terry  
LUKENS**

Terry Lukens was born on November 28, 1943, obtained his undergraduate degree from Brown University, and studied at the Columbia University Graduate School of Business. After service as a United States Air Force officer, he received his law degree from Rutgers University in 1973. Following a judicial clerkship with the Oregon Court of Appeals, he moved to Bellevue in 1974 and joined Karr, Tuttle law firm. He is in charge of the firm's Bellevue office.

For many years I have served Bellevue in youth, church, and charitable activities; in the leadership of the South Bellevue Citizens Advisory Committee; as a member of the city's Human Services Advisory Committee; and, currently, as chairman of the Bellevue Planning Commission. This community involvement has given me the opportunity to gain the needed skills, knowledge, and the right kind of experience to serve on the Bellevue City Council as our city continues to grow and mature.

As a member of your city council my priorities will be:

1. Create neighborhood forums to provide regular and meaningful citizen input into city decisions.
2. Provide a thoughtful council voice that respects all points of view on the tough issues facing Bellevue as it matures.
3. Manage traffic congestion by using the most innovative techniques now being developed while preventing spillover into residential areas.
4. Promote both a strong economy and quality residential neighborhoods.
5. Expand Bellevue's park system, especially waterfront parks, pedestrian trails, and playing fields.

**CAMPAIGN MAILING ADDRESS: 2543 103rd Avenue S.E., Bellevue, WA 98004 PHONE NUMBER: 455-4377**



**Margo  
WAIDE**

Entrepreneur. Publisher of BelleVue. . . The Eastside Guide since 1976. Past professional experience: Press Aide, U.S. Congressman, Washington D.C.; Press Liaison, Alaska Court System; Capitol Hill Liaison for Westinghouse; Public Relations, Children's Hospital, D.C.; Speechwriter for U.S. Senators & Congressmen at Library of Congress, D.C.; Courts Consultant, Dept. of Architecture, University of Illinois. Education: High School Valedictorian; B.A. from University of Washington (Scholarship Recipient). Accepted U.W. Law School.

Naturally beautiful with an aware population, Bellevue can be a cosmopolitan city with beautiful architecture while maintaining its green, park-like setting.

As an entrepreneur successfully running a sole-proprietor magazine, I bring a flair for creative problem solving, meeting challenges cleverly with conservative fiscal policies and minimum staff. My multi-faceted experience in public relations, courts, health care and the legislature, provide a well-rounded background.

I support a Convention Center (funded by the hotel room tax) for it will bring clean money into the area and provide additional tax revenue by increasing business in retail shops and provide entry level jobs for young people . . . without increasing traffic congestion. Downtown Bellevue needs more parking space. I support a performing arts center . . . all great civilizations have supported the arts . . . and most importantly: a *world-class youth gym & activity center with a built-in drug and alcohol information and evaluation program*; a public marina for visiting boats; affordable housing for families with young children (a certain % of 3+ bedroom units in multiple family dwellings).

P  
O  
S  
I  
T  
I  
O  
N  
4



**Don  
MacKENZIE**

Born in New York, August 12, 1929. Graduated, Civil Engineering, 1950, Dublin University. Employed by The Boeing Company as engineer since 1961.

Civic Activities include: Lake Hills Annexation Committee; I-90/Eastgate Subarea Plan Advisory Committee; Past President, Spiritridge Community Club; Past President, Bellevue Coalition of Community Clubs; Republican Precinct Committeeman/State Convention Delegate.

Organization memberships: Seattle Professional Engineering Employees Association (SPEEA); American Association of Retired Persons (AARP); Knights of Columbus; St. Louise Parish.

My platform for the next four years will be similar to that of my last four years on the Bellevue City Council: To represent ALL of the citizens of Bellevue.

A major concern of mine is that government must practice fiscal restraint and learn to operate within existing revenues without raising taxes.

The City of Bellevue's budget has increased by 50% over the last five years requiring increases in taxes and rates. I have opposed these increases and will continue to do so, where necessary, in the future.

Another concern of mine is the quality of public services. Our traffic problems continue to grow each year while our street system is deteriorating. This is the result of inadequate planning. The City needs a realistic plan for traffic circulation and a long-range plan for maintenance of our streets. These are goals I have pursued in the past four years and which are about to come to fruition.

We are privileged to live in a beautiful city and region.

Help me to keep it that way!

**CAMPAIGN MAILING ADDRESS: 2553 156th Avenue S.E., Bellevue, WA 98008 PHONE NUMBER: 643-4840**



**Richard  
RISING**

Richard Rising, born March 1, 1930, has lived in Bellevue since 1960. He graduated in Forest Management from the University of Washington.

Management experience includes General Manager of Roberts Rents Office Furniture in Bellevue (current), V.P./General Manager, Reichhold Chemicals and a Northwest Regional Manager, Simpson Timber Company.

Married 23 years with three children, he retired as a Captain in the Naval Reserve, after serving 30-years and commanding a NRF Destroyer Escort.

A deep interest in protecting Bellevue's quality of life, its people and future development draw me toward the Bellevue City Council. I believe this community deserves leadership with the drive, experience and integrity to make effective, impartial decisions.

Involvement in the Eastside community expanded during the 1970's when my wife Nancy Rising served on the Bellevue City Council.

Currently, active in the Bellevue Chamber of Commerce, Bellevue Rotary and the Municipal League.

Issues: Expanded relationships with local governments regarding storm drainage, water supply, environmental protection, transportation and traffic resolution.

Excessive funding for vague studies of multi-purpose stadium/convention center facility. Studies should be focused and limited.

The absolute necessity for the Bellevue City Council to reflect the same high qualities of the community.

Continued focus on Human Service programs responding to the decrease in Federal assistance, especially youth and seniors.

Increased cooperation between Council and Bellevue School District.

I am dedicated to issues involving quality. Quality of human spaces. Quality of neighborhoods. Quality of future directions.

Anything else is simply not enough!

**CAMPAIGN MAILING ADDRESS: P.O. Box 1822, Bellevue, WA 98009 PHONE NUMBER: 462-7368**



**Ken  
PEASE**

Date of birth: March 14, 1942. Occupation: Manager of Supplies Department at the University Book Store. Education: B.A. at the University of Washington in Marketing/Accounting. Personal: Married and family of four daughters with four grand children. Activities include tennis, water skiing and private pilot.

It has been a real pleasure serving on the city council this past four years. I have gained a lot of valuable experience during that time. I would now like to build on that experience and put it to good use by serving the city for another four years.

It is my goal to help keep Issaquah on a sound foundation in order to cope with the growth both from within and around the city. Sound in terms of both our planning and financial processes. I will also attempt to keep our city government in a proactive roll rather than a reactive roll on those issues that affect us. It is my pledge that I will give my very best effort to achieve these goals.

**CAMPAIGN MAILING ADDRESS: 80 Mt. Olympus Drive N.W., Issaquah, WA 98027 PHONE NUMBER: 392-3409**

**UNOPPOSED**



**Wayne  
HOPMAN**

Wayne is a Washington native, born in Seattle in 1947. He has a BS in Civil Engineering from the University of Washington, with graduate work at Stanford. As Manager of Civil/Construction Engineering for Puget Power, he directs engineers responsible for the design and construction of some of the company's most successful and complex projects. He has fifteen years of professional experience in engineering and project management. He is a veteran, married, with two sons.

As the Chairperson of the Issaquah River and Streams board for the last three years, and an Issaquah resident for eleven years, he has been involved in the review of major developments which have greatly impacted the city. This experience resulted in his desire to seek a position of decision making authority in the city.

Current issues facing the city include: long-term impacts from recent major developments, planning for new commercial and residential development, Issaquah Creek flooding, storm drainage management, groundwater quality, East Cougar Mountain development, traffic congestion, and fiscal planning. He has the professional engineering experience to evaluate the technical facts, sensitivity to deal with the environmental concerns, and management skills to provide effective problem solving for the issues confronting the city.

He plans on representing the residents of Issaquah to see that the city is well managed and that future planning ensures quality services.

**CAMPAIGN MAILING ADDRESS: 805 W. Sunset Way, Issaquah, WA 98027 PHONE NUMBER: 392-1325**

**UNOPPOSED**





# City Of Issaquah Council

P  
O  
S  
I  
T  
I  
O  
N  
  
3

**Don  
RAYBUCK**

Don Raybuck, a 16-year resident, was born December 7, 1934 and has always lived in Washington except during Marine Corps service. He has a degree in administration and is an accounting and training administrator for Puget Power. He has served four years on the Issaquah City Council, the past two as president. Community service includes Chamber President, Kiwanis Lt. Governor and volunteer to Issaquah Seniors, Salvation Army, Issaquah School District and his church.

Don believes local government's first priority is to public safety. He has four years on the Council's Public Safety Committee and has seen the completion of the police/jail facility and the progress of the fire station remodel and fire equipment upgrades.

Most of the Issaquah City Council current policy decisions are growth related. Don believes traffic solutions depend on the new Sunset/I-90 interchange with a bypass to Hobart Road, extension of Gilman Blvd. to Sunset, and improvements to the Newport Way corridor. He believes in orderly residential and commercial growth, adequately mitigated to meet community standards and protect the environment. He feels a less intense mix of multi-family units and more single-family homes is important for a well rounded community.

Don has initiated Council consideration of the Issaquah Creek flooding problems and provided strong support to downtown revitalization. He believes in long range planning as demonstrated by the Capital Improvements Plan and is working for a management plan for the Lake Tradition property.

CAMPAIGN MAILING ADDRESS: 225 Mt. Olympus Drive S.W., Issaquah, WA PHONE NUMBER: 392-1689

**UNOPPOSED**



# Bellevue School District No. 405 Director

D  
I  
S  
T  
R  
I  
C  
T  
  
1



**Malcolm (Mac)  
DOUGLAS**

Resident of Bellevue since 1960 and is 32 years old. Attended and graduated from Bellevue Schools. Douglas graduated from University of Puget Sound (BA, School of Business). Married with three children, he is employed as an insurance broker in Bellevue. He is also currently active as a board member and coach for the Bellevue Boys and Girls Club as well as a youth advisor and teacher at a local church.

The Bellevue School District has maintained a high level of educational opportunities for its students. With the District facing continued cutbacks in the general fund, I will strive to continue quality and continuity of education both inside and outside of the classroom.

Decentralization of decision making is in the early stages of implementation. I support the concepts of bringing decision making closer to the classroom, however, clear objectives as well as training for parents and staff must be used in the implementation of this program to achieve the District's goals of improved educational experiences for all students.

Bellevue has changed tremendously since I graduated from High School in 1973. The way we teach kids today has also changed. The Bellevue Schools must continue to find new and more effective ways to educate their youth in order to better prepare them for life in the 21st century.

Our schools are one of our community's most valuable resources. I plan to maintain the district's goals of excellence in education through parent, community and staff involvement.

CAMPAIGN MAILING ADDRESS: 2425 91 Pl. NE Bellevue, WA 98004 PHONE NUMBER: 453-1535

Candidate did not submit a statement or photo.

**Steven (Matt)  
GOLDBERG**

# Bellevue School District No. 405

## Director



D  
I  
S  
T  
R  
I  
C  
T  
  
2



**Phil  
NOBLE**

Born August 1, 1946. I graduated from Sammamish High School in Bellevue. I earned a degree in Business Administration and a law degree from the University of Washington. After a clerkship at the Washington Supreme Court and the U.S. District Court, I began a law practice at Helsell, Fetterman, Martin, Todd & Hokanson, where I am now a partner.

I am seeking reelection to the Bellevue School Board because Bellevue and its schools are important to me. I have lived here over 20 years. With two children in elementary school I have a vested interest in the quality of education we provide.

I was elected to the School Board four years ago. Previously, I served a year on the school district's fiscal committee, which studies and makes recommendations on financial matters. This background has given me a great deal of knowledge and experience concerning the problems and opportunities facing our schools.

Our district is in transition. It is studying and implementing new programs at the high school and elementary levels. The recently adopted middle school program is being restructured and the district is considering a new local school management approach. New facility improvements are being planned. We continue to have declining enrollment and diminishing financial resources. Over the past four years I have studied and dealt with these and other issues. These matters will continue to demand thoughtful study and tough decisions.

Twenty-two years experience in education as a teacher (all grade levels), parent of 4 and volunteer. Served as unit president and levy/legislation chairman of PTA (20 year member). Served as chairman Parent Advisory Council for Bellevue's Chapter I program and on the 1986-1987 school closure citizens' committee.

Taught in 23 of 26 Bellevue schools, 1985-1987.

B.S. Education, Mankato State University. Graduate studies, Mankato State University, University of Washington, Seattle Pacific University.

My candidacy is based on the belief that our children deserve and must have the best education possible. Their future and the future of our community depend on this.

The biggest challenge ahead for Bellevue Schools will be providing quality education under the current state laws restricting educational funding. These are the primary issues that must be addressed, however, separately.

It will be necessary to work with our legislature to change our current state laws that limit the potential of Bellevue's educational process.

Increased communication and involvement between the school board and the community will be vital to providing higher educational standards meeting the demands of the future.

Decisions regularly put before our school board are increasingly critical and complex. Research, public input and careful thought must precede these decisions.

I intend to be a "hands-on" school board member. I am fortunate to be able to devote the time and effort necessary to be an effective director and will not lose sight of our primary responsibility of quality education.

CAMPAIGN MAILING ADDRESS: 14206 NE 12 PL Bellevue, WA 98007 PHONE NUMBER: 643-7831

**Sheila R.  
FIX**

D  
I  
S  
T  
R  
I  
C  
T  
  
4



**Sherrie  
MILL**

Born July 22, 1947, I attended Seattle Public Schools. I graduated magna cum laude from the University of Washington earning a Bachelor of Science degree in dental hygiene and educational honors in Phi Beta Kappa and Mortar Board. My professional background includes teaching clinical dental hygiene at Shoreline Community College and the University of Washington. I currently work as a homemaker and part-time hygienist in a private dental practice.

My decision to pursue a position on the Bellevue School Board has evolved out of twelve years of volunteer work in the Bellevue schools. As a PTSA officer at my sons' schools, a Bellevue PTSA Council president coordinating the efforts of the district's twenty-three PTSA schools and a Bellevue Schools Foundation trustee administering the Small Grants Program, I have been involved with the educational concerns of students, parents, staff and the community. My volunteer responsibilities have exposed me to the various perspectives and issues I must consider as a member of the Board of Directors.

Among the issues I would like to pursue are: excellence and equity, improved communication with the school community, accountability, partnerships with business and government, funding and morale. My goal is to make careful, accurate and fair decisions, and I am willing to invest my time to achieve this goal. I believe that the education of our children is worth the investment.

CAMPAIGN MAILING ADDRESS: 1619 168 Ave. NE Bellevue, WA 98008 PHONE NUMBER: 747-7485

**UNOPPOSED**



# Tahoma School District No. 409

## Director

D  
I  
S  
T  
R  
I  
C  
T  
2



**Kathy  
FISTONICH**

Wishing to stay home with my three children, I started my home-based design and sewing business in April, 1984. Since then, I have become (typically) increasingly involved in my kids' 'doings' -- particularly with regard to their educational process. With an AA degree, I believe I've only begun my educational quest, but at 33, (born 1/7/54), I have plenty of time to achieve my *personal* goals. For now, *the kids come first*.

What an exciting time to be living in the Tahoma School District area! The steady growth that we have been experiencing during the past few years is providing all of us with a rare opportunity to *actively* participate in the development of our community--its policies, its dynamics, its special effect on our personal standards of living. As one who has lived in the Maple Valley area for only four years, I realize that there may be certain elements of our community's historical and political past of which I am unaware. But, I think that perhaps this very naivete could actually prove to be an asset in that I would not be distracted by what "was" or what "has been"--rather, I am *challenged* by what "is" and what "could be"! As a School Board Director I would strive, always, to maintain an *objective* approach to School Board issues, as well as an open and responsive attitude toward community input, and, *always*, keeping our *childrens'* interests *first and foremost* in my heart and mind.

CAMPAIGN MAILING ADDRESS: 21239 S.E. 252nd Place, Maple Valley, WA 98038 PHONE NUMBER: 432-6667



**Chuck  
HARDAWAY**

Retired USAF officer, flying 104 combat missions in Vietnam--numerous awards, including Distinguished Flying Cross. MBA, George Washington University. Founder of computer design/repair company; currently serving as consultant. Member/past president, Tahoma School Board; member Greater Maple Valley Area Council since 1979; chairman, July 1986-August 1987, Seattle-King County Private Industry Council; board member Venture Center (helps survivability of small businesses). Age 54. Married. Son, Tahoma graduate, in second year at Naval Academy.

Dynamic, innovative leadership is needed to educate our children to *survive* in this highly competitive world. Other industrialized nations are putting us to a real test; the competency of our nation, as well as the quality of life for our children, is at stake. I have devoted my five years on the Tahoma School Board to providing opportunity and motivation for *all* students to reach their full potential.

Schools are facing challenges never before experienced. Larger numbers of children are dependent on our schools for, not only their formal education, but job training, guidance in dealing with alcohol and drug abuse, and coping with problems associated with broken homes. How we respond to this growing need will determine the quality of our future. How much more effective to teach a child than try to fix an adult (it's cheaper, too)! We could begin slowing down the ever increasing costs of the criminal justice system, more and more jails, welfare, and unemployment. I am dedicated to making the education of our children our number one goal!

CAMPAIGN MAILING ADDRESS: 21505 S.E. 255th Court, Maple Valley, WA 98038 PHONE NUMBER: 432-9433

D  
I  
S  
T  
R  
I  
C  
T  
3



**Keith  
HARDING**

Keith Harding holds a Bachelor of Science in Technical Arts from California State Polytechnic, and is in his sixteenth year as an Industrial Arts Instructor for Seattle Public Schools. Harding worked six years for Boeing in tooling before focusing on education. Harding has been a School Director eleven of the nineteen years he, wife Bonnie, and their three daughters have lived in Maple Valley. Harding is currently serving his third term as Tahoma Board President.

The education of the children of Maple Valley is the foundation of my responsibility as a school director. My guide in decision making is to always remember that we must provide a safe, healthy learning environment and challenging, supportive programs for all students.

I have served the Maple Valley Community for eleven years. During this time, District funding has stabilized through legislative lobbying and voter approval of bonds and levies indicating patron confidence in District programs and leadership.

With careful planning, needed facility improvements such as the addition to the High School, renovation of the Junior High, and the newly completed remodel of the Lake Wilderness Elementary complex have been accomplished.

At the same time, academic and extra-curricular opportunities have expanded to meet the diverse needs of our children. I have supported gifted programs as well as District funded remedial programs.

I have worked effectively with many directors and viewpoints over the years, as well as with the citizens of Maple Valley. I look forward to another four years of service.

CAMPAIGN MAILING ADDRESS: 17022 190th S.E., Renton, WA 98058 PHONE NUMBER: 226-9228



**Linda  
HOLECEK**

I am a 1966 graduate of Renton High School. After graduating, I attended Seattle University. Currently, I work for a commercial real estate appraisal firm as the administrative manager. My duties in running an active office include: personnel management, accounting, purchasing, training, and extensive work in public relations. I also have a background in motivational and communication skills.

Married, living in the Tahoma School District 14 years with three school-age children, I've been very active in the schools. Most recent responsibilities include: Parent Group President - Junior High (2 years), High School (2 years), and serve on numerous committees. I've demonstrated interest and dedication to our district by the countless hours I've volunteered supporting our schools.

I care that our schools create programs and maintain a climate in which every student has opportunities for success. I support efforts to attract and retain the most qualified, best trained staff possible. I will encourage a continuing dialogue with the entire community to communicate needs as well as achievements. By working together, we can make positive contributions to make our good school system even better. I'm interested in doing everything I can to promote education and to nurture a positive working atmosphere between student, patrons and schools.

We're a growing district - on the move. I would appreciate *your* support as we look together, toward the future of our children and schools.

CAMPAIGN MAILING ADDRESS: 19058 S.E. 163rd, Renton, WA 98058 PHONE NUMBER: 228-1519



# Tahoma School District No. 409

## Director



D  
I  
S  
T  
R  
I  
C  
T  
  
4



**Arlene  
SCHMIDT**

Born in Newark, New Jersey 9/28/46. Attended Seton Hall University. Married; moved to the West Coast in 1967. Worked in Seattle and San Francisco as a secretary, bookkeeper, office manager. In 1979 worked for Tahoma School District as a substitute bus driver. From 1980-85 worked in special education as a personal aide in the severely handicapped program. Currently working as an office manager/secretary/emergency assistance specialist for Catholic Community Services in Kent.

**GOALS:**

1. Be a vehicle for bringing board and patron concerns to administrators and hold administrators accountable in addressing these concerns.
2. Promote academic excellence and encourage the recognition of students who show increased effort and academic improvement.
3. Advocate for a greater understanding and acceptance of special education as a contributing member of the larger regular education program
4. To really *LISTEN*. And to foster open communication on all levels.
5. Never forget that we deal with whole people. Foster their growth; encourage them in their dreams.

**CAMPAIGN MAILING ADDRESS: P.O. Box 178, Ravensdale, WA 98051 PHONE NUMBER: 432-5014**

**UNOPPOSED**

# Snoqualmie Valley School District No. 410

## Director



D  
I  
S  
T  
R  
I  
C  
T  
  
2

**Richard G.  
KRONA**

Mr. Krona was born March 24, 1955, in Tacoma, and moved with his family to the Snoqualmie Valley immediately thereafter. After attending Valley schools Rick went on to the University of Puget Sound, graduating with honors in business administration in 1977. Returning to the Valley, Rick began work as a certified public accountant in his family's firm. Today, he and his brother have succeeded their parents as partners of Krona & Krona, CPA's.

A school board member has a unique opportunity to help create an educational environment that encourages, rather than hinders, children's development. Our school district is entering a critical time as the rapid growth on the Eastside reaches out to our area. If elected, my first objective will be to continue trying to provide adequate facilities in a timely manner. The District is also in need of top administrators due to retirement and relocations. Selection of quality people will be an important role of the Board in this coming year. The demands made on public schools seem to grow exponentially every year. Juggling these new responsibilities, along with providing basic education, is a challenge I look forward to solving with the help of fellow board members, district personnel, parents, and the children.

**CAMPAIGN MAILING ADDRESS: P.O. Box 799 Snoqualmie, WA 98065 PHONE NUMBER: 888-3942**

**UNOPPOSED**



# Snoqualmie Valley School District No. 410

## Director

D  
I  
S  
T  
R  
I  
C  
T  
  
3



**Donald K.  
GMAZEL**

Born in Lansing, Michigan on March 7, 1943. Moved to Snoqualmie, Washington in 1981. Married, wife Virginia, four children and two step children. Employed at Group Health Cooperative of Puget Sound as an Account Executive in the Marketing Division. Prior to joining Group Health Cooperative I was a partner in s m s r, a site design and land use consulting business. Since graduation I have worked 22 years in engineering and 4 years in marketing. I have been a member of the Snoqualmie Valley School Board for 2.5 years.

As a parent with children in the Snoqualmie Valley School District and an involved member of the community I look forward to contributing my experience and commitment to the school district. During the next few years our district has several major issues facing it. Within the next year we will be hiring a Superintendent, Assistant Superintendent, opening a new elementary school and hiring administration and teachers to staff that school. I feel that my experience on the school board and my commitment to the community will help me in making the decisions that will be required by the school board.

**UNOPPOSED**

D  
I  
S  
T  
R  
I  
C  
T  
  
5



**Dan D.  
GUETTLER**

Born May 21, 1950, I have been a resident of Fall City for the last eight years. I am employed by Starbucks Coffee as Director of Production and Human Resources.

My occupational background includes working with budgets, unions, scheduling, manufacturing, production and human resources.

I have Bachelors' degrees in Economics and Political Science from Montana State University. Upon completion of a Thesis I will be awarded a Masters of Organizational Development from Central Washington University.

I feel I have the background and commitment necessary to serve you as a member of our School Board. I feel my work experience lends to the skills necessary for the effective operations of our school district. I have two school age daughters which lends to my commitment of making our School District the best that it can be.

The most critical action that needs to be addressed by the School Board is the hiring of a Superintendent. I believe our District needs strong leadership in this area. I believe the School Board should choose the path the District travels while the Superintendent leads the District down that path handling obstacles along the way.

Other issues facing the District are means of retaining a superior teaching staff, construction of a new school, repair and maintenance of existing buildings, etc., all of which has to be accomplished with limited funds. I will ensure to the best of my ability I will appropriate funds so as to gain the maximum benefits for our District and our children.

**CAMPAIGN MAILING ADDRESS: 33005 SE 42nd ST Fall City, WA 98024 PHONE NUMBER: 222-7955**



**Louise  
MARTIN**

Born 1936 in Stambaugh, Michigan. Graduated 1954 Iron River High School, Iron River, Michigan. Have worked in an office since that time. Most recently as Office Manager/Accounting supervisor for J.J. Welcome Construction Co., Inc. since 1964.

Since we are a rapidly growing district, it is my hope to continue providing a quality education for the students of our district while coping with the problems of rapid growth. I have been on the board since 1976 and have seen many changes. I also see many changes in the future. With the problems facing our young people, who will be our leaders in business, government and education, it is imperative that the quest for excellence in education be the prime concern of present boards. In public education the views are many and varied. The general public has divergent views as to what is needed by their children. It is the job of each board to try to satisfy all those needs to the best of their ability with the resources available to each district.

**CAMPAIGN MAILING ADDRESS: Box 604 Fall City, WA 98024 PHONE NUMBER: 222-5582**

LOCAL FOCUS: The Issaquah School District serves a population of about 38,000 people in a 110-square-mile area encompassing the cities of Issaquah and Preston and unincorporated areas adjacent to Bellevue and Renton. Approximately 7,000 students are served by 750 employees in two high schools, three middle schools, seven elementary schools.

# Issaquah School District No. 411

## Director



D  
I  
S  
T  
R  
I  
C  
T  
1



**Valerie Knecht  
HOFF**

Born: Tacoma. Practicing attorney for 9 years. Employment with Nelson and Hoff, P.S., Bellevue. Education: B.A. and J.D. (Univ. Puget Sound), M.A. (Purdue). Married; one child at Issaquah High School. Member: Washington State Bar Association, American Bar Association, Seattle-King County Bar Association, Women's University Club of Seattle, Who's Who in American Law, 1987; Who's Who in American Women, 1984 to present. Holds Washington State Education Certificate.

Our children are our greatest resource. They must be given an education that prepares them for an everchanging and challenging society. Because we live in a Pacific Rim state, certain courses need to be emphasized and/or added to the existing curriculums. Communication, both oral and written, is necessary to enhance the lives of our children and prepare them for the future, including placement in colleges and employment. Decreasing standardized test scores in math indicate a need to adhere to the basics of "reading, writing, and arithmetic." The school board's major function is to develop policies that are in the best interests of all children in the district, and still reflect the differences among individual students. No aspect of student life can be overlooked in the search for excellence. Issaquah's population is changing and growing with the developments on the Pine Lake Plateau, Cougar Mountain and south districts. But, we must remain in our budget and have fiscal responsibility as well. This starts and ends with the school board.

CAMPAIGN MAILING ADDRESS: 6212 164 SE Issaquah, WA 98027 PHONE NUMBER: 747-4128



**Karen Taylor  
SHERMAN**

Karen Taylor Sherman, 40; Indiana native; Indiana University 1964-67; graduated from Dickinson State (North Dakota), 1968: BA in English, Russian and BS in Education, English. Taught English, North Dakota, 1968-71. Married, two children.

President Issaquah School Board. Served as board vice-president, legislative representative; levy/bond PR co-chair; bond committee member; president, King County School Directors.

Active in PTA, Issaquah Chamber (board), KCTS/Channel 9 Board; State School Directors' Association (2nd Vice President).

I have worked hard at being a solid, effective board member, one you can be proud of. I have helped move this district far from the situation it was in when I was elected eight years ago.

A good listener, I make decisions based on careful consideration of the facts rather than on parochial interests. Devoting much of my time and effort to district concerns, I have developed valuable contacts outside of the district that benefit Issaquah (especially since Olympia controls over 85% of our funding). In education circles statewide, I am recognized as an effective leader.

We will soon be the exceptional district that we all want Issaquah to be; everything I have worked hard for in the last ten years has been with that goal in mind. Even with our recent problems, we still are able to do more than ever before for Issaquah students.

*Experience, leadership and commitment are vital to Issaquah.*

I've earned the experience and demonstrated the leadership and commitment.

I'd appreciate your vote. Thank you.

CAMPAIGN MAILING ADDRESS: P.O. Box 904 Issaquah, WA 98027 PHONE NUMBER 641-0234

D  
I  
S  
T  
R  
I  
C  
T  
3

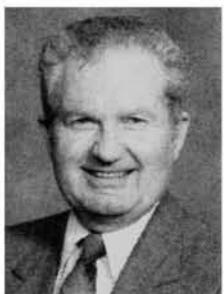


**Diego  
FRUTOS**

Born 1943, the father of 5 sons, who have been or are presently in the Issaquah School system; attended the American Academy of Dramatic Arts, made a career change and received a Bachelor of Arts in Theology. He has worked within the ministry for 23 years. Received a Bachelor of Arts degree in Communication and upon completion of his thesis a Masters Degree. He is presently Chaplain/Director of transients services at Union Gospel Mission.

It's time for a change. The Washington State School Directors' Association Workshop manual states that the "Board approves the budget. . . and board approval of expenditure" must take place. I believe the School Board needs to acknowledge full responsibility for the financial fiasco and voice an apology to the voters of Issaquah. I'm opposed to busing kindergarten students. I favor a "Parent Advisory Committee" as well as student input, by having a "Student Board Advisor" plus have students evaluate their teachers each semester. I'm in favor of increased salary or bonus for exceptional teachers rather than teaching gadgets. I firmly believe that the school board *MUST* inform King County and Olympia officials that before they plan to enlarge our community, they ought to listen more carefully to those on the "home front". We cannot continue to allow these higher powers to bring families plus students, on a run away train, when we as a school community neither have the school buildings or money to educate them by law!

CAMPAIGN MAILING ADDRESS: 1649 215 Place SE Issaquah, WA 98027 PHONE NUMBER: 392-2313



**Bill  
McGLASHAN**

Bill McGlashan, born in 1932, is a Manager in the Finance Department at Boeing with experience in a variety of business assignments in the past 30 years. Issaquah School Board skills gained in eight years of service include President, Vice-President, Legislative Representative, Board Member and Past President of KCDA Purchasing Coop and member of the SPI Community Education Advisory Committee. Bill attended the University of California at Berkeley and majored in business and economics.

Bill is committed to continuing the improvement of the educational program for Issaquah students. He would achieve results through: long-range planning in both curriculum and finance; curriculum enrichment for today's changing work environment; use of district financed workshops to provide teachers the opportunity to diversify and update their teaching skills; continued use of parent, staff and concerned citizen committees to keep the school district in touch with the community regarding educational offerings, facilities planning, and future requirements; assuring the vocational technical program continues to grow in accordance with the five-year plan and encouraging business partnerships to keep the program alive.

Bill is dedicated to remain visible and available for input from all segments of the community. The future is tomorrow—let's plan for it today.

CAMPAIGN MAILING ADDRESS: 70 E. Sunset Way #199 Issaquah, WA 98027 PHONE NUMBER: 392-0400





# Issaquah School District No. 411

## Director

D  
I  
S  
T  
R  
I  
C  
T  
  
5

**Darlene J.  
HAUGEN**

3/21/33 date of birth. Retired school teacher. Master Education and Special Education. Certificated Alcohol & Drug Counselor. Former welfare mother. Raised 4 children as single parent. Taught pre-school, profoundly retarded, gifted, elementary, middle school, high school, college interns, & emotionally disturbed students.

The United States has the greatest school system in the world. I support and promote schools without drugs, recognition of the "Average Student" (the neglected), an outstanding music program, the proper allocation of funds, and practicing what we teach nutritionally.

I support and promote the Teachers' Effectiveness Program, lowering classroom size, increasing the pay not only for the teachers but also for the principals and secretaries. Also, to allow incompetent and burned out teachers to transfer into other sectors. I support and promote the increase of funding for vocational education and increasing equivalency credits.

I support and promote federal funding for child care services, since the current services are inadequate, too expensive, and do not meet the needs of all children; decrease all latchkey children.

I support and promote special programs LLD and TLC and expansion to Middle Schools of TLC.

I support and promote utilization of community resources. The Foundation, C2B2, urges businesses to adopt schools, utilize senior citizens, and allow school and community joint use of facilities.

**UNOPPOSED**



# Kent School District No. 415

## Director

**LOCAL FOCUS :** Kent is the fifth largest school district in Washington with 18,271 students. In an area of rapid growth, Kent SD opened three new elementaries this year for a total of 29 schools. A winner of many national awards, it is governed by a five-person board who hires a superintendent.

D  
I  
S  
T  
R  
I  
C  
T  
  
1

**Robert (Bob)  
O'BRYAN**

Born 10-15-21. Married, Wife Sumi, Son Yasuji, Daughter Tamiko. Retired Enlisted US Navy. Retired school teacher and elementary principal. Educated - Central Washington State College, B.A. 1963, M.Ed. 1968.

The Kent School District has a large and diverse population. Unfortunately, the makeup of its board of directors does not adequately reflect that diversity. I come from a different age group and a different socio-economic group than the other members of the board. I also have a more traditionalist philosophy than the others. I believe these characteristics give the board a more balanced perspective than it might otherwise have. I also believe that my experience as a teacher and administrator in both military and public schools gives me a better understanding of the problems involved.

**CAMPAIGN MAILING ADDRESS: 20443 101st Avenue S.E., Kent, WA 98031 PHONE NUMBER: 852-7117**

**UNOPPOSED**

# Kent School District No. 415

## Director



D  
I  
S  
T  
R  
I  
C  
T

2



**Ken  
GEISEN**

Ken, 46, was born in North Dakota and moved to the Northwest in 1963 to join The Boeing Company. He holds a Bachelor of Science Degree from North Dakota State University, and earned a Masters Degree in Business Administration from Seattle University in 1975. Ken is a regional director in the marketing department of the Boeing Commercial Airplane Company, responsible for developing marketing strategies related to the sale of airplane products.

Having lived in the Kent School District for almost 20 years, Ken has experienced first hand the district's growth to over 18,000 students, fifth largest in the state. He and his wife, Lisa, have two children attending Meeker Junior High and Kentridge Senior High School.

Ken is serving his fifth year on the Board of Directors, having been President, Vice-President, and Legislative Representative. He has been instrumental in establishing policies that are responsive to the community's educational needs and goals. During this period the board has reviewed and increased the district's graduation requirements, tightened the homework and discipline policies, expanded the staff training programs, strengthened the management team form of administration, successfully opened three new schools and numerous facility additions and improvements, refined the district's goal setting process, changed to a collaborative bargaining process with the teachers' association, and began implementing computer technology into classrooms and offices.

Ken will provide the experience and continuity necessary to maintain the educational excellence of the Kent School District. **RE-ELECT KEN GEISEN!**

**CAMPAIGN MAILING ADDRESS: 17116 146th Avenue S.E., Renton, WA 98058 PHONE NUMBER: 226-9008**

Born March 9, 1960, am employed at Seattle City Light as an Administrative Specialist I. Have attended Central Washington State University, Highline Community College, and several seminars, classes/additional schooling through Seattle City Light. I have lived in Kent for about 2 years on Kent's S.E. Hill.

I realize I am new in the political arena, and have a lot to learn. But that's what makes seeking this position so enticing. I enjoy learning new concepts and would like to become politically involved with my community. This is the first step.

I feel I can offer a lot of new and innovative ideas regarding school issues and concerns.

**Heidi J.  
HEINEMAN**

D  
I  
S  
T  
R  
I  
C  
T

3



**Michael  
MILLER**

Born: 2/25/48, three children, Ryan 11, Tobin 6, Meghan 4. Occupation: Vice President and Area Manager for South-King, Pierce County Branches of Old National Bank of Washington (worked for ONB for 17 years). B.A. in Business Administration from W.S.U. President, Kent Chamber of Commerce 1981-82, Member Rotary Club of Kent, Chairman of Junior Achievement Marketing Committee for Kent 1984-87. Member, American Lutheran Church.

The Kent School District is one of the finest districts in the state of Washington. This is one of the major reasons I have chosen to work and live in Kent. My children are receiving a quality education in the Kent School District.

The reasons I became involved in the district board are primarily five-fold.

1. I wanted to insure that we continued to develop and improve the quality staff in the district.

2. To provide a meaningful, challenging, curriculum to the students of the district.

3. To help address the drug-alcohol problems of students.

4. To continue to develop partnerships with businesses in the Kent Valley so that our students are exposed to the resources in our business community.

5. Maintain our district's buildings and other physical assets in good condition so that we provide a positive environment for our students and staff.

With 2 (soon to be 3) children in Kent Schools, I have a strong personal interest in the success of the district.

**CAMPAIGN MAILING ADDRESS: 28139 110th Avenue S.E., Kent, WA 98031 PHONE NUMBER: 859-1596**

**UNOPPOSED**



## Water District No. 90

C  
O  
M  
M  
I  
S  
S  
I  
O  
N  
E  
R



**Thomas L.  
TASA**

Tom Tasa was born November 19, 1946, in Renton and grew up attending Renton schools. He is a graduate of Renton High School (1965) and the University of Washington (1969) with a B.S. in Chemistry. He has worked for the Seattle Housing Authority for almost twenty years and is an Area Maintenance Administrator with experience in construction, maintenance and contract administration. Tom and his wife, Marian, have two children: Craig, 6, and Katie, 2.

As a Commissioner for Water District 90, Tom Tasa is committed to improving service and managing growth in a way that preserves the rural environment of the area and does not adversely affect the rate structure of existing customers. His priorities include exploring ways to maximize the Water District's ability to manage available water resources to better plan for seasonal use and supply; and, continuing to look into the possibility of utilizing other sources of water to lessen the Water District's dependability on the City of Seattle's water supply.

**UNOPPOSED**



## Water District No. 107

**LOCAL FOCUS:** King County Water District No. 107 supplies water and wastewater service to Factoria, Newport Hills and surrounding areas. The district is governed by an elected three member board of commissioners. The District's goal is to continue to provide safe, reliable and economical water and wastewater service.

C  
O  
M  
M  
I  
S  
S  
I  
O  
N  
E  
R



**Elmer F.  
FOSTER**

I was born in Seattle and have lived in this region most of my life. Graduated from the University of Washington with a B.S. degree in Mining and Metallurgy. After 41 years with the company, I retired from Boeing engineering in 1981. Resident of Newport Hills for the last 25 years. I have been a Commissioner of King County Water District No. 107 for 11 years.

As an incumbent, I am seeking re-election to the office of Commissioner, Water District No. 107 in order to utilize my 11 years experience in this position. Together with my fellow Commissioners we can continue to do our job of setting policies that have helped create our well engineered and managed District water and sewer systems. I support a basic policy that each new development bears the cost and is responsible for the installation of new water and sewer system extensions required by the development. Our knowledgeable staff does not lose sight of the fact that they are working for the rate payers. We all want to insure that rates are fair and as low as feasible.

**UNOPPOSED**



LOCAL FOCUS: Water District No. 127 provides water service from its own wells to about 700 customers in the Fall City area. Since its establishment in 1980, the District has made substantial improvements to the water system. The District is governed by a locally elected three member Board of Commissioners.

# Water District No. 127



C  
O  
M  
M  
I  
S  
S  
I  
O  
N  
E  
R

I was born in 1930 to a logging family who moved around the Pacific Northwest working in the woods. I graduated from Wahkiakum High School in Cathlamet, Wa. My wife and I have two daughters and one son. For 23 years I worked for Weyerhaeuser Company in various positions including logging foreman and sort yard supervisor. Last Nov. I retired from Weyerhaeuser. Currently I am log buyer for Loth Lumber and ITT Rayonier.

I have been with King County Water District No. 127 from its beginning. I have worked with the other commissioners to keep the water rates down and the water quality up. Getting new water lines and water tanks installed has been a priority.

**Thomas L.  
CALVIN**

**UNOPPOSED**



# Fire Protection District No. 10

## BALLOT TITLE

### PROPOSITION NO. 1 AUTHORIZING PROPERTY TAX LEVY

Shall King County Fire Protection District 10 be authorized to increase its regular property tax levy to \$1.50 per thousand dollars of assessed value to be levied initially in 1987 for collection in 1988?

(This shall not be construed to authorize an excess levy and shall be subject to otherwise applicable statutory limits).

## Explanatory Statement:

King County Fire Protection District 10 is the fastest growing fire district in the County. This influx of population and termination of an operational agreement with another agency has put particular demands on the Fire District. New facilities and more manpower are needed to maintain the same high degree of service being afforded to the public presently.

Two stations are planned for the northern end (Pine Lake Plateau) of the district; one of which is already under construction, the other will be provided by the developers in and around the Klahanie area. A new station is needed in the southern end (Coalfield/May Valley) of the district. A facility there had been shared with an adjoining fire district, however the contract for that facility will terminate effective January 1, 1988. In the easterly portion (Preston) of the district a new facility will be required by 1991 as permits for the existing station expire. With the new stations and population growth, manpower needs also will increase.

It takes a minimum of nine career people to man a station on a 24-hour basis. Currently two stations are manned on a 24-hour basis, one on the Pine Lake Plateau and the Headquarters Station in Issaquah. The plan is to man the South station. Every station in the district has volunteer personnel and are supplemented by the on-duty career staff. During regular daytime working hours especially, volunteers are not always available, therefore, more career personnel must be hired.

Approval of this proposition will provide the district with the resources necessary to meet these demands.

## Statement for

No statement submitted.

## Statement against

No statement submitted.

# Fire Protection District No. 10 Commissioner



6  
Y  
E  
A  
R  
  
T  
E  
R  
M



**Richard P.  
LANDIS**

Born August, 1924, Chehalis, married 42 years to Louise, four children. Educated in Portland, Oregon, public schools, University of Oregon, University of Detroit. Former newsman. Member, Yakima Fire Department 1950-1970. Chief, Fire District 10, 1970-1975. Interim Director, King County Emergency Medical Division, 1975-1976. Former President, King County Fire chiefs Association, present Vice-President, King County Fire Commissioners Association. Fire service trainer, 18 years. Frequent fire service seminar lecturer in Northwest and Alaska. Incumbent Commissioner.

Our fire district protects the fastest growing area of the county. Since 1970 I have seen the budget grow from under \$75,000 to over \$2 million, and the department evolve from an essentially volunteer organization to one which must increasingly retain career fire-fighters. Coping with this growth and the changes it compels is the greatest challenge to the Commission, that is, to provide the most effective protection within our budget.

While it is important to consider our own objectives it is necessary not to focus entirely on our own needs. The desires and demands of our population must be considered as well as problems and goals of other entities including Federal, State and County governments, municipalities, private sector and other fire districts. I feel the Commission has established an harmonious relationship with these entities and it is my desire to continue this cordial relationship. At the same time we must assure the safety and security of all members of the department.

For these reasons I am pleased to be a candidate for re-election.

CAMPAIGN MAILING ADDRESS: 15923 259 AV SE Issaquah, WA 98027 PHONE NUMBER: 392-6239

**UNOPPOSED**

2  
Y  
E  
A  
R  
  
T  
E  
R  
M



**Robert A.  
LONTZ**

Born February 1942, Bob's a 22 year veteran and Officer in the Seattle Fire Department. He has also risen through the ranks to serve more than 3 years as Assistant Chief with Fire District #10. After earning a degree in Fire Command and Technology, he was trained in 1985 at the National Fire Academy. He was a member of the Washington State Association of Fire Chiefs, involved in Scouting, and is his Church's Treasurer.

Fire District 10 faces complex areas of concern.

Unfavorable annexations to the West and South threaten our revenues by \$300,000 in 1988. To counter this, District 10 should annex the North Pine Lake Plateau after opening our Station 108.

Serious losses of volunteers, inadequate manning of fire apparatus (two fire-fighters responding!) are unsatisfactory problems. A decline in training, a proposed removal from service of 3 Aid Cars in Maple Hills, Mirrormount, and Preston are inappropriate actions.

Did you know the commissioners passed \$1.2 million in bonds without voter approval, and without voter notification? I cannot support this action by your elected officials!

What do I stand for? I support adequate manpower in emergency responses, no loss of services, increased fiscal responsibility with your taxes. I will work for improving volunteer recruitment, and increased training. A successful annexation at the North Pine Lake Plateau would improve our revenues. Foremost, District 10 should work cooperatively with surrounding Fire Districts and Departments.

My campaign can be contacted at: 32920 S.E. 121 Street, Issaquah, 98027. Phone 222-5707.



**Vaughn (Jim)  
MERRITT**

Born January 17, 1935 in Seattle. Moved to the Issaquah area in 1950. Graduated from Issaquah High School in 1953. Became a volunteer fire fighter in May, 1954 until retiring in August, 1987 at the rank of Battalion Chief.

From 1961 to 1971 was employed with the Boeing Company in material distribution. Upon leaving was co-owner of Merritt Lighting and Appliance. Currently engaged as a manufacturer's representative for aircraft equipment.

With the rapid growth of this Fire District, my goal is to maintain the most professional service for the taxpayers' dollars. In working close with the administration, this goal will be met. I will keep close watch on any movement by other governmental agencies which show an intent to annex portions of District 10. Some such annexations could and will have a direct impact on operating revenue.

In view of the ratio for fire to medical calls, I will actively pursue obtaining an additional Medic I unit to support this Fire District. An ideal condition would be to have all District stations manned on a 24 hour basis. Due to economics this is not possible. We must rely on the successful existing volunteer program for years to come.

CAMPAIGN MAILING ADDRESS: 21301 SE 24 Issaquah, WA 98027 PHONE NUMBER: 392-3939





# Fire Protection District No. 25

C  
O  
M  
M  
I  
S  
S  
I  
O  
N  
E  
R



**Donald J.  
JENSEN**

Don, a manager with Boeing Computer Services, has a Masters Degree in Civil Engineering. He has lived in the District for more than 21 years and has been active in the Fire Service for 14 years. Don has been a commissioner for the past 6 years and is currently Chairman of the Board. In addition to being a volunteer officer and a commissioner, Don has demonstrated his concern by volunteering extensive time in his community.

My educational background and experience in the engineering field has provided me with the necessary decision-making skills for the Fire District. I have a thorough knowledge of water distribution, water flow, building construction and traffic control. I have also studied the chemistry and physics of fire suppression, fire investigation and the handling of hazardous materials.

The proper care and transportation of the physically ill and the injured are a great concern of mine. I believe the Fire Department must continually train its personnel, upgrade and maintain all the equipment and provide the best service possible within the budget.

During the past 14 years I have strived to improve both the day-to-day operations of the Fire Department as well as improve the service provided to the community. As our community continues to grow and be developed, special attention to the needs of all the people in the district must be addressed. My management skills and administrative experience will provide the Fire District with the best person possible for this position.

**CAMPAIGN MAILING ADDRESS: 12104 SE 67 Place Bellevue, WA 98006 PHONE NUMBER: 746-4562**

**Barry  
WOLBORSKY**

Dr. Wolborsky was born on August 13, 1942. He received his bachelor's degree from Clarkson College, his master's degree from Seattle University, and his doctorate from the University of Washington. He has functioned as a personnel consultant to local industries for the past 15 years and currently runs his own business in Bellevue, Washington.

The citizens of King County Fire District Number 25 deserve to be represented on the fire district's Board of Commissioners. From the district's past history, this does not seem to have been the case.

It is very difficult to see how many of the commissioners' decisions in the last five years have considered the wishes or best interests of the citizens.

I believe that local government should be *directly* responsive to the citizens and *directly* accountable for tax dollars spent.

We all want a first class fire department, but we all work hard for our money and would like assurances that our tax dollars are being spent in the most *effective* and *efficient* way possible.

If elected, I will be the citizens' voice on the board and attempt to insure the department's management by twentieth-century techniques, insuring your tax dollar is wisely spent.

**CAMPAIGN MAILING ADDRESS: 6808 119 SE Renton, WA 98056 PHONE NUMBER: 271-5799**



# Fire Protection District No. 37 Commissioner

6  
Y  
E  
A  
R  
T  
E  
R  
M



**Henry D.  
MAIRS**

Resident of King County for 75 years (DOB 2/2/1912). Currently serving as Commissioner and Chairman of Board for K.C.F.P.D.#37. Held Commission position for eight years during time of significant growth and demand for emergency services. Attended high school in Seattle. Fourteen years as Seattle Firefighter. Twenty-eight years inspecting buildings (residential and commercial), served as King County Fire Marshal, Building Official - City of Mercer Island, presently Building Inspector-City of Normandy Park.

I have dedicated my life to the protection of life and property. My family has its roots and future in this community. My years of experience and involvement place me in an ideal position to continue to work for excellence in Fire/Medical protection for our community. I submit the following background as proof of my qualifications and commit myself to continued work on providing excellence in Fire/Medical protection for our community.

**FIRE SERVICE RELATED EXPERIENCE:** 14 years - Seattle Fire Department; 3 years - King County Fire Department; 13 years - Inspector, King County Building Department; 5 years - King County Fire Marshal; 10 years - Building Official, Mercer Island. Currently Building Inspector for Normandy Park - 7 years.

Served in key role on the Kent Fire Department Master Plan and Public Safety Bond Issue Citizens' Committee. Currently serving as an advisor/commission representative on construction of new Covington fire station. Served 8 years as Fire Commissioner during times of extensive and rapid growth in Fire District #37. Successfully met the challenges to provide adequate services within our fire district.

**CAMPAIGN MAILING ADDRESS: 20736 140th Avenue S.E., Kent, WA 98042 PHONE NUMBER: 631-0868**

I am a Fire Protection Engineer employed by King County and a former Fire Commissioner of Fire District 37. Born on 4-29-32, I am married with four children.

My professional background includes serving as Kent Fire Marshal, Fire Chief of a Fire District, and Fire Protection Engineer. My high school education has been augmented by hundreds of hours of specialized training through North Seattle Community College, fire service training classes, seminars and conferences.

Just as you expect and deserve highly trained professionals to come to your aid in a fire or medical emergency so should you expect and deserve highly trained professionals to operate your fire district. My background makes me **AN OUTSTANDING CANDIDATE** to represent you and address the fire and life safety needs of this district.

As your elected representative I pledge to: 1) seek construction of a fire station in the **COVINGTON AREA**; 2) replace the old outdated fire station in the **PANTHER LAKE AREA**; 3) relocate district business meetings from downtown Kent back to the fire district and change meeting times to evening hours to allow you a voice in district business.

The tax dollars you pay for fire protection should be returned to you in service. Only through wise expenditures of funds for personnel, equipment and facilities can such service be given to you. I have the knowledge, background and experience to see that your tax dollars are spent wisely.

Vote **HENRY O. OPEL** - a professional for a professional position.

**Henry O.  
OPEL**

# Fire Protection District No. 37

## Commissioner



2  
Y  
E  
A  
R  
  
T  
E  
R  
M



**Robert  
KITTO**

Born 6/6/42; self-employed as an attorney in Kent; graduated from Stanford University (1964) and the University of Washington Law School (1967); recently appointed as a Commissioner for Fire Protection District No. 37.

I have always tried to participate in some capacity in my community. As our area continues to grow, so will our needs for fire protection and emergency medical services. This will require thoughtful long-range planning and sound financial management of District funds by the Commissioners.

I believe I have the background and experience to both make sound business decisions and deal as necessary with other political jurisdictions. My past activities include Kent City Council member (2 terms), 2 years as Council President, and 2 years as Finance Committee Chairman; member of the Kent Board of Adjustment; officer and director of the Kent Rotary Club; and member of the Board of Directors of both the Meridian Valley Maintenance Association and our condominium association.

**CAMPAIGN MAILING ADDRESS: 13810 S.E. 251st, Kent, WA 98042 PHONE NUMBER: 631-4457**

**Alice K.  
MATZ**

Native of Washington State - Date of Birth 3/9/35. High School Graduate, Vocational Education in Business Office Procedures, Fire Services Training for Fire Commissioners and Advanced First Aid & Emergency Care Training; Former Fire Commissioner and Chairman of the Board (1978-1984); Occupation: Production/Office Clerical; Support Services Volunteer to Fire Department since 1984; Resident of Fire District #37 since 1968; Married and the mother of 3 grown children.

Having been involved with the Fire Department since 1978, I feel I'm qualified to represent the citizens of the Fire District as Commissioner.

I was the first Fire Commissioner to attend Department Association Meetings, Fire Drills with the Firefighters, and respond on Fire/Emergency calls. By doing this, I was better able to serve the citizens and the department, resulting in obtaining more firefighters, new and better equipment, and fire stations, for our fast growing district.

I also was successful in seeing that the district monies were invested earning interest until needed, thus enabling the saving of taxpayers' dollars.

I served on the Provider Group for Medic-One, campaigned to keep the Medic Services and for the Emergency Phone System 911. I feel the Commissioners must be held accountable in the spending of the citizens' tax dollars and when acting on their concerns of the district. Thank you citizens for supporting your Fire Department & Emergency Services.

**CAMPAIGN MAILING ADDRESS: 17200 S.E. 265th Street, Kent, WA 98042 PHONE NUMBER: 631-2550**

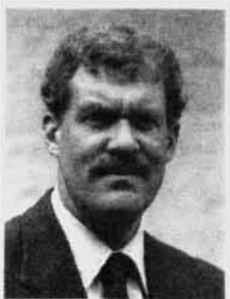
**LOCAL FOCUS:** The fire district provides fire protection, emergency medical care, and other services. The five stations are located in Maple Valley, Ravensdale, Plamora, Maple Valley Heights, and Hobart. Staff: 12 full time, 64 volunteers. Budget: \$1.1 million. 1986 emergency responses: Fires - 324. Medical Aid - 862. Other services - 132. Area Served: 55 Square Miles.

# Fire Protection District

## No. 43



C  
O  
M  
M  
I  
S  
S  
I  
O  
N  
E  
R



**Mark D.  
FERN**

I was born in Maple Valley, 3-29-47. I graduated from Tahoma H.S. and attended Western Washington University to study music. I then joined the U.S. Army, Military Police Corps, which started my law enforcement career. I now work for the King County Police, Precinct three, in Maple Valley. I attended Green River C.C. and completed a course of study in law enforcement. I live happily with my wife, Frankie, and daughters, Sharon and Janet.

Having also been a volunteer firefighter and lieutenant with K.C.F.P.D. No. 43 for fifteen years, I'm familiar with the fire service, and public service as well, and understand the needs and desires of the public, which are no different than my own. F.D. 43 is a healthy, efficient organization, and I intend to keep it that way. The budget is the greatest concern and it must be carefully monitored, but a balance must be struck to ensure that the community has the best equipment for its needs, and proficient crews, trained and ready. Fire protection is not cheap, but need not be unreasonably costly or extravagant. Maple Valley has grown and the fire department has kept up with that growth. I intend to continue that effort. I have no ax to grind nor radical changes to introduce. As a department member I am at the station daily and can keep abreast of department activities. I have lived my life here and wish to put something back into our community.

**CAMPAIGN MAILING ADDRESS: 20630 295th Place S.E., Maple Valley, WA 98038 PHONE NUMBER: 432-1429**

Born: Kent 1919. Early Years: Family farm near Shadow Lake. Attended Maple Valley and Old Tahoma High Schools. Family: Wife, Francine, 8 children, 5 grandchildren. Present Status: Retired, living at Homestead Acres.

Education and occupation background: Attended WSU before serving in Army as Medic. After War completed education in Engineering at UW. 28 years as heavy construction superintendent, worked on Grand Coulee and Mud Mountain Dams. 15 additional years as truck trailer combination operator.

If elected, I will ensure that the residents and taxpayers of the district will receive the maximum fire protection available within the monies provided by the budget. I want the manpower and equipment of this district effectively and efficiently utilized. I will not tolerate waste or misuse. The decisions affecting the district should be made in public with the maximum of public input and public discussion. The residents of the district should be informed as to what is going on.

The decisions made and policies instituted by the commissioners should be from full information developed in advance without undue influence or conflict of interest. If elected, I do not intend to be a "yes" person or a rubber stamp of any person or any organization. I have no loyalties, other than to the residents and taxpayers of the district.

**CAMPAIGN MAILING ADDRESS: 28107 199th, Kent, WA PHONE NUMBER: 631-2221**

**Jim  
WILSON**



# Eastgate Sewer District

COMMISSIONER

Born Seattle May 4, 1920. U of W 1938-40, US Naval Academy 1940-43. Graduate Ocean Engineering Studies, MIT 1946-49 and Civil Engineering at U of W 1971-73. Engineering Duty Officer 1943-69, in Design, Construction and Repairing Naval Ships. Assessments Analyst and King County Deputy Assessor (1973-79). Civil Engineer in Hydraulics, King County Surface Water Management Division (1979-1983). Commissioner, Eastgate Sewer District 1971-87.

I treat everyone equally and fairly and protect our constituents' interests by insuring developers be required to install safe, quality sewage systems without passing any development costs on to existing customers.

In my current term we have succeeded in getting Bellevue's utility tax rescinded for our Bellevue customers.

I have been active in monitoring Metro's design process for the expansion and conversion to secondary treatment of all its sewage to help ensure that the optimum, least cost system is constructed. I am vigorously supporting the expansion & conversion of the West Point Treatment plant to secondary treatment. It makes use of the best outfall available with the least, adverse impact on Puget Sound. It uses current facilities at West Point and still provides excellent access to the adjacent beach for all citizens. It avoids removing industrial property from tax rolls & thus avoids an ever increasing hidden tax on the rest of us taxpayers. The cumulative effect of this hidden tax would ultimately exceed the total cost of the project.

CAMPAIGN MAILING ADDRESS: 3425 W. Lake Sammamish RD SE Bellevue, WA 98008 PHONE NUMBER: 746-8573

**Robert A. (Bob)  
BOSCOLE**

UNOPPOSED



# Sammamish Plateau Water and Sewer District

LOCAL FOCUS: The District is involved in area and regional water quality and supply issues and is committed to providing the highest level of service possible. We invite the public to attend our commission meetings held the first three Mondays of each month starting at 3 p.m. at the District office.

COMMISSIONER

I am a native of Portland, Oregon and completed public schools there. I graduated from Oregon State University in nursing. I earned my Ph.D. in molecular genetics at the University of Washington. After a postdoctoral fellowship in pathology, I did research on cancer mechanisms. I am now a consultant in toxicology. I have resided in the Beaver Lake area for 22 years with my husband. We have four children and seven grandchildren.

I support the present policies of the District, including:

Provision of ample amounts of the safest possible water available at reasonable cost.

Provision of sewer service to those who want it as soon as feasible.

Funding of major facilities needed to serve new development by fees on new services, not rate increases for current customers.

Welcoming public participation in major policy and planning decisions.

Providing information to customers on septic tank maintenance and on responsible use and disposal of household chemicals, for the protection of our ground and surface waters.

Regional cooperation with other utilities in water resource planning, emergency water interties, sewer route planning, sewage treatment planning (Metro), and groundwater protection.

Resisting attempts to abolish local control of utility districts, as this could result in dilution of our excellent drinking water with less-pure sources and loss of control over costs.

Continuing education for staff and management through participation in programs of the American Water Works Association, the Washington State Association of Sewer Districts, and classes preparing for state certification.

CAMPAIGN MAILING ADDRESS: 2017 East Beaver Lake Drive S.E., Issaquah, WA 98027 PHONE NUMBER: 392-5489

**Ruth W.  
SHEARER**

UNOPPOSED



# COMPLETE TEXT OF King County Proposition No. 1

AN ORDINANCE providing for the submission to the qualified electors of King County, at a special election to be held in conjunction with the general election on November 3, 1987, of a proposition seeking approval of the issuance by King County of not more than \$99,800,000 of unlimited tax general obligation bonds, the principal of and interest on which shall be payable from annual property tax levies in excess of regular property tax levies, maturing within a maximum term of 20 years, to finance certain capital improvement projects at Harborview and Pacific Medical Centers, and the Seattle-King County Health Department's Columbia, East, South, Southwest and Renton Clinics.

**PREAMBLE:** Harborview Medical Center ("Harborview") includes the only trauma center in a four-state region providing level one emergency patient care. It serves as the major regional facility for referrals of critical injuries including burn cases and spinal cord and head injuries. Annual emergency room patient visits have increased from 31,000 in 1982 to over 40,000 in the 12 months ended June 1987.

Harborview plans an expansion and remodeling of its emergency trauma center to accommodate the increasing patient volume and to more efficiently locate emergency and other support services.

Currently nursing units with 92 beds for patients requiring acute nursing care are housed in a portion of the Harborview facility built in 1931. Harborview plans to relocate the nursing units to a modern facility to meet state regulations and to provide an efficient physical configuration for patient care.

All of Harborview's medical and surgical out-patient facilities are housed in aging facilities which lack adequate heating, ventilation and air conditioning and which contain inadequate clinic space which is inefficiently designed. Harborview intends to renovate its out-patient facilities to promote efficiency, increase capacity and meet contemporary standards.

Pacific Medical Center ("PMC") is public development authority which operates clinics in Seattle, Totem Lake, Renton and soon in Bellevue. Pursuant to written agreements, PMC is the provider of specialty and diagnostic medical services for low-income and uninsured patients referred from King County and Seattle community health clinics. It is also the Regional Uniformed Services Treatment Facility for active duty and retired military personnel in King County under contract with the Department of Defense.

Structural improvements to the PMC's Beacon Hill facility are necessary to meet the Seattle seismic and other building codes to allow the institution to continue fulfilling its major role in the King County public health care delivery system. The continuation of PMC's ability to contribute to the public health care system is important to King County's purposes to provide for the health and well-

fare of its citizens.

The non-profit community clinic known as the "Community Clinic System" has become the family doctor for more than 70,000 low income residents of King County. The Health Department plays a major role in planning, development and support of the community clinic system, as well as operating a network of health service centers throughout the county providing specific public health services focused on children, seniors and pregnant women. In order to meet the needs of the growing population, new facilities are needed immediately in the East side, South King County and in Southeast Seattle health department service areas. Furthermore, co-locating non-profit community clinics with these health department clinics provides the public both cost efficiencies and better access to comprehensive family services. The Renton and Southwest health department service centers require improvements to correct building deficiencies to promote their efficient operation.

It is the intent of King County to issue unlimited tax general obligation bonds to finance the capital improvements and to submit this proposal for approval by the electorate.

BE IT ORDAINED BY THE COUNCIL OF KING COUNTY:

**SECTION 1.** "Regional Health Care Capital Improvements Project," as used herein, shall mean:

A. Capital improvements to Harborview for the purposes of expanding and consolidating its emergency trauma center and other key diagnostic and treatment departments, expanding, improving and relocating patient and visitor services, and modernizing, expanding and consolidating in-patient and out-patient facilities; and

B. Capital improvements to PMC for the purpose of making structural repairs and/or additions which will bring its "Tower Building" on Beacon Hill into compliance with the City of Seattle's seismic and other building codes (the "PMC Project"); and

C. The following capital improvements to facilities operated or to be operated in whole or in part (as more specifically noted below) by the Health Department (collectively, the "Health Department Clinic Project"):

1. A new Southeast Seattle Community Health Center in Columbia City area intended to house the services of the Health Department's existing Columbia Health Center and which may also house (but shall not be required to do so) a co-located nonprofit community health clinic; and

2. A new East District Public Health Center in east King County intended to house the services of the Health Department's existing East District Public Health Center and which may also house (but shall not be required to do so) a co-located nonprofit community health clinic, and may also include a satellite clinic in north King County to be operated, in whole or in part, by the Health Department; and

3. A new health center in south King County intended to house the services of either the Health Department's existing Auburn Health Center or an additional Health Department health center, and, in either case, which may also house (but shall not be required to do so) a co-located nonprofit community health clinic; and

4. Expansion and remodeling of the Health Department's existing Renton Health Center; and

5. Roof repairs at the Health Department's existing Southwest Public Health Center.

**SECTION 2.** Subject to the approval of the qualified electors of King County, the county council hereby authorizes the issuance of unlimited tax general obligation bonds (the "Bonds") in an aggregate principal amount not to exceed \$99,800,000 for the purpose of providing all or part of the money necessary to pay the capital costs of the Regional Health Care Capital Improvements Project. The term "capital costs," as used in the foregoing sentence, shall be construed consistently with the term "capital purposes" in Article VII, Section 2(b) of the Washington Constitution and R.C.W. 84.52.056, but, subject thereto, may include the costs of: (i) property acquisition, site preparation and demolition; (ii) development, design, engineering, architecture, planning, financial, legal, relocation and other services lawfully incurred incident to the development of the components of the Regional Health Care Capital Improvements Project and their financing; and (iii) construction, renovation, remodeling, equipping and furnishing of the components of the Regional Health Care Capital Improvements Project and their financing, including its incidental costs and costs related to the sale and issuance of the Bonds; however, the term "capital costs" shall not include maintenance, operations or costs for replacement of equipment.

The maximum amount of principal proceeds of the Bonds to be made available to each component shall be as follows:

A. \$75,465,000 for the Harborview Project;

B. \$9,315,000 for the PMC Porject; and

C. \$15,020,000 in the aggregate for the Health Department Clinic Projects.

The Bonds shall bear such date or dates; shall mature at such time or times not to exceed 20 years from the date of issuance thereof; shall be issued in such denominations; shall bear such terms, conditions and covenants; shall be in such form; shall bear interest at such fixed or variable rate or rates; shall bear such redemption and registration privileges; and shall be sold in such manner, at such time or times, in such amounts and at such price or prices as the county council shall hereafter determine by ordinance. The Bonds may be issued in one or more series, either separately or in combination with other authorized general obligation bonds of King County.

The Bonds shall be general obligations of King County and, unless paid from other sources, both the principal thereof and the interest thereon shall be payable from annual property tax levies, if authorized by the qualified electors as provided in section 5 of this ordinance, upon all taxable property within King County in

excess of the regular property tax levies without limitation as to rate or amount.

**SECTION 3.** Subject to the approval by the qualified electors of King County of the issuance of the Bonds for the purposes described in section 2 of this ordinance, the county council may, by ordinance, provide for the issuance of short-term obligations in anticipation of the issuance of the Bonds in accordance with the provisions of R.C.W. 39.50. The aggregate principal amount of all such short-term obligations and Bonds outstanding at any time shall not exceed \$99,800,000.

**SECTION 4.** No part of the Bonds or any short-term obligations in anticipation thereof, the proceeds of which are intended to finance the PMC Project, shall be issued or sold unless and until the county council shall have approved and authorized the execution of, and King County and the City of Seattle's Pacific Hospital Preservation and Development Authority have entered into, an appropriate interlocal cooperation agreement defining the rights and duties of the respective parties with respect to the accomplishment of the PMC Project and the use of the proceeds of Bonds or short-term obligations in anticipation thereof.

**SECTION 5.** The county council finds that an urgent need exists for the Regional Health Care Capital Improvements Project and declares that an emergency exists requiring submission to the qualified electors of King County of a proposition authorizing the issuance of the Bonds for the purposes described in section 2 of this ordinance at a special election to be held in conjunction with the general municipal election to be held on November 3, 1987.

The King County manager of records and elections as ex officio supervisor of elections is hereby requested to find the existence of such emergency pursuant to R.C.W. 29.13, and is requested to assume jurisdiction of and to call and conduct a special election and to submit to the qualified electors of King County the proposition set forth below. The clerk of the council is hereby authorized and directed to certify said proposition to the King County manager of records and elections in substantially the following form, with such additions,

deletions or modifications as may be required by the King County prosecutor:

## KING COUNTY REGIONAL HEALTH CARE CAPITAL IMPROVEMENTS PROPOSITION NO. 1

Shall King County, to finance Harborview Medical Center's trauma center and certain capital improvements at Harborview and Pacific Medical Centers, and the Health Department's Columbia, East, South, Southwest and Renton Clinics, as provided in King County Ordinance 1896, issue up to \$99,800,000 of unlimited tax general obligation bonds with a maximum term of 20 years, on which principal and interest shall be payable from annual property tax levies in excess of regular property tax levies?

BONDS, YES  
BONDS, NO

Certification of such proposition by the clerk of the council to the King County manager of records and elections, in accordance with law prior to the date of such election on November 3, 1987, and any other act consistent with the authority of and prior to the effective date of this ordinance, are hereby ratified and confirmed.

**SECTION 6.** If any one or more of the provisions of this ordinance shall be declared unconstitutional or invalid for any reason, such decision shall not affect the validity of the remaining provisions of this ordinance, the Bonds or any short-term obligations issued in anticipation thereof, and this ordinance, the Bonds and any short-term obligations issued in anticipation thereof shall be construed and enforced as if such unconstitutional or invalid provision had not been contained herein.

INTRODUCED AND READ for the first time this 10th day of August, 1987.

PASSED this 24th day of August, 1987.

KING COUNTY COUNCIL  
KING COUNTY, WASHINGTON

Gary Grant (signed)  
Chair

ATTEST:  
Dorothy M. Owens (signed)  
Clerk of the Council

APPROVED this 3rd day of September, 1987.

Tim Hill  
King County Executive

# COMPLETE TEXT OF Fire Dist. No. 10 Prop. No. 1

KING COUNTY FIRE PROTECTION DISTRICT 10  
ISSAQUAH, WASHINGTON  
RESOLUTION 87-3

A RESOLUTION providing for the submission to the qualified electors of the District at an election to be held on November 3, 1987.

WHEREAS, in the judgment of the Board of Fire Commissioners it is essential and necessary for the protection of the public health, life, and property, that necessary equipment, apparatus and/or personnel be acquired and/or hired and public services be provided to adequately meet the safety needs of the District's community; and,

WHEREAS, the cost increase of operation has exceeded revenue, because of restrictions imposed by RCW 84.55.010;

NOW, THEREFORE BE IT RESOLVED that the Board of Fire Commissioners of King County Fire Protection District 10 submit a proposal to the qualified electors of said district requesting authorization to increase the regular property tax levy to \$1.50 per thousand of assessed valuation, which is authorized under RCW 84.55.050.

PASSED by the Board of Fire Commissioners of King County Fire Protection District 10 at its regular meeting held on September 14, 1987.

Richard P. Landis (Signed)  
Chairman  
Jerry L. Bragg (Signed)  
Commissioner  
Vaughn Merritt (Signed)  
Commissioner  
Lin Hanson (Signed)  
Administrative Assistant  
SAMPLE BALLOT TITLE  
AUTHORIZING PROPERTY TAX LEVY  
Shall King County Fire Protection District 10 be authorized to increase its regular property tax levy to \$1.50 per thousand dollars of assessed value to be levied initially in 1987 for collection in 1988?  
(This shall not be construed to authorize an excess levy and shall be subject to otherwise applicable statutory limits).  
YES  
NO

## For Your Information...

Washington territory became a state in 1889. For nearly 100 years our state has been a leader in supporting citizen rights, populism and education for all. In 1914 Washington State produced its first voters' pamphlet presenting state issues. In 1985 the Washington State Legislature granted the same opportunity to local governments.

This pamphlet represents the first co-production between the state of Washington and a county, allowing residents of King County to receive in one publication issues and candidates ranging from the state level to the smallest taxing district.

State law requires that local legislation be adopted to allow publication of a pamphlet. In June 1987 the King County Council and the County Executive signed into law the enabling legislation and funding. Records and Elections Division was given the responsibility of implementing the pamphlet. Rules for participating were adopted with the help of the cities and towns, the Municipal League, the League of Women Voters, Common Cause, and the Republican and Democratic Parties.

Each city, town, or district must pay the cost of participation for its candidates and issues to be included in the pamphlet. That cost amounts to less than one cent for each person in King County.

This issue of the Voters' Pamphlet has been published in 16 editions, three of which have been jointly produced with the City of Seattle. The pamphlet includes 90% of cities and towns, 85% of the school districts, 50% of the fire districts and 25% of the remaining taxing authorities. Over 75% of all contested races in King County are included. Special editions are also available in Spanish, Chinese, Braille and tape cassettes.

King County government is proud to bring this pamphlet to you. Please read the statements and study the issues. A sample ballot is included for your convenience, as is an absentee ballot application.

Let us know what you think of this issue and how we can make future editions a better voting tool for you.

### King County Division of Records and Elections

---

## ... And For Our Information

Please take a minute and complete this comment sheet. Your comments provide valuable assistance in the improvement of this voters' pamphlet. Please mail to King County Division of Records and Elections, 553 King County Administration Building, Seattle, WA 98104.

- |   | YES                      | NO                       |
|---|--------------------------|--------------------------|
| 1. Was this pamphlet delivered early enough to help you study the issues?   | <input type="checkbox"/> | <input type="checkbox"/> |
| 2. Were the design and format of the pamphlet appealing and readable?   | <input type="checkbox"/> | <input type="checkbox"/> |
| 3. Was the information, including the ballot title and explanatory statement, provided for each measure clear and understandable?   | <input type="checkbox"/> | <input type="checkbox"/> |
| 4. Do you have any suggestions which might improve the voters' pamphlet or is there any other voter information you would like to have included in future editions of the voters' pamphlet? | <input type="checkbox"/> | <input type="checkbox"/> |

---

---

---

**YOUR COMMENTS COUNT!**

---

# MAJOR POLITICAL PARTY CAUCUS AND CONVENTION PROCEDURES

---

In Washington State, the candidates for most offices which appear on the state general election ballot are nominated at a primary election. The most important exception to this procedure is the nomination of candidates for the positions of President and Vice President. This information is presented to familiarize Washington voters with the process by which the nominees for President and Vice President are determined and how Washington residents can participate in that selection process. This section is detachable so that you may keep it after the election for reference.

Delegates to the national nominating conventions of the major political parties from Washington are selected through a system of precinct caucuses, county or legislative district conventions, and finally, the state convention. The first step in this process is the precinct caucus, a neighborhood-level meeting open to all of the members of a particular political party. Precinct caucuses are held in each precinct of the state in the early spring of each presidential year. Individuals are elected from each precinct to attend the legislative district or county convention where the delegates to the state convention are chosen. The delegates to the state convention select the delegates to the national convention at which the presidential and vice-presidential nominees are selected. In addition to the selection of delegates, those persons attending party caucuses and conventions have the opportunity to determine the party platform, vote on resolutions, and meet party candidates for a variety of local, state and national offices.

## DATES OF PRECINCT CAUCUSES AND CONVENTIONS

	Republicans	Democrats
Precinct caucuses	March 8, 1988	March 8, 1988
County conventions	April-June 1988*	April 23, 1988
District conventions	April-June 1988*	April 30, 1988
State convention	July 15-16, 1988	June 11-12, 1988
Location of state convention	Tacoma	Olympia-Tumwater-Lacey

\*Information on the time of all of the caucuses and conventions was not complete at the time this publication was prepared.

## RULES AND PROCEDURES

Each political party has the authority under state law to adopt rules to govern the delegate selection process and other party activities which occur in conjunction with the caucuses and conventions. These party rules specify the number of delegates from each precinct to the county or legislative district convention, the number of delegates from each legislative district or county convention to the state convention, and the procedural rules for conducting the caucuses and conventions. The delegate allocation formulas are usually based on population or a combination of population and the number of votes certain candidates for that party received in the precinct, district or county. A copy of the rules of either party should be available from the state committee of that party in advance of the time precinct caucuses are held.

## ADDITIONAL INFORMATION

The dates and locations of all party caucuses and conventions receive advance press coverage and are generally advertised by the parties. Specific questions you have about any aspect of the nominating procedure may be directed to the state committee of the respective party. They may be able to respond to your inquiry directly or they may refer you to either your precinct committeeperson or your county or district chairperson. The addresses and telephone numbers of the state committees are as follows:

Washington State Republican Party  
Nine Lake Bellevue Drive, Suite 203  
Bellevue, WA 98005  
(206) 451-1988

Washington State Democratic Committee  
1702 Smith Tower  
Seattle, WA 98104  
(206) 583-0664



---

## **INDEPENDENT CANDIDATE AND MINOR PARTY NOMINATING PROCEDURES**

---

This summary of the procedures governing the nomination of independent and minor party candidates is not meant to be inclusive. Persons interested in being nominated in this manner should consult Chapter 29.24 of the Revised Code of Washington or obtain more detailed information from the office of the Secretary of State, P.O. Box 9000 (AS-22), Legislative Building, Olympia, WA 98504.

### **NOMINATING CONVENTION**

Any nomination of a candidate for partisan political office other than by major political party must be made by a convention held on the last Saturday preceding the filing period. In 1988, this will be July 23. Notice of the intention to hold a nominating convention must be published in a newspaper of general circulation within the county in which the convention is to be held at least ten days before the date of the convention. A number of registered voters equal to one for each 10,000 voters who voted in the jurisdiction for which each nomination is made or twenty-five such voters, whichever number is greater, must attend the nominating convention and sign the nominating petition for the candidates who are nominated.

### **CERTIFICATE OF NOMINATION**

The signatures and addresses of the registered voters who attended the convention and a record of the proceedings of the convention must be submitted to the office of the Secretary of State no later than the last day allowed for candidates to file for office. In 1988 this deadline is July 29. Any candidate who is nominated at an independent or minor party convention must file a declaration of candidacy with the Secretary of State and pay the filing fee required for the office sought. (A nominating petition containing signatures of registered voters equal to the dollar amount of the filing fee is permitted for those candidates without sufficient assets or income to pay the filing fee.) The names of all of the candidates who have been nominated by convention will be printed on the primary election ballot together with the major party candidates for their respective offices. With the exception of candidates for the offices of President and Vice President, no candidate may have his or her name printed on the general election ballot unless he or she receives at least one percent of the total votes cast for that office in the partisan primary.

**SECRETARY OF STATE  
TOLL-FREE VOTER INFORMATION  
1-800-824-VOTE (8683)  
TDD TOLL-FREE VOTER INFORMATION  
1-800-422-VOTE (8683)**

---

# WASHINGTON STATE VOTER INFORMATION

---

## VOTER REGISTRATION

### Qualifications for registering:

1. You are a U.S. citizen by birth or naturalization.
2. You will be 18 or older on the day of the primary or general election.
3. You are a legal resident of the state of Washington.

### When to register:

Anytime, but you must register 30 days before the election to be qualified to vote. The voter registration deadline for the 1987 state general election is October 3, 1987.

### Where to register:

You must register in person at the **King County Division of Records and Elections** or before a city or town clerk or deputy voter registrar. Deputy registrars are located in most public schools, some fire stations and state offices. Contact **Records and Elections at 344-5265** for the location of the registration facility nearest to you.

### When it is necessary to re-register:

You must re-register only if:

1. You did not vote in the previous 24-month period, or
2. You did not vote in the 1984 presidential election, or
3. You have moved from one county to another, or
4. You have legally changed your name.

To be eligible to vote, you must re-register 30 days before the election. Keep your registration current. Your registration remains valid as long as you exercise your right to vote!

### If you move, you must transfer your registration:

If you move within a county, you should also change your voter registration. This can be done before a deputy voter registrar or by mail. If you mail the information, include both your old and new addresses and your signature and forward to **Records and Elections Division, 553 King County Administration Building, Seattle, WA 98104**. To be eligible to vote in your new precinct, you must transfer your registration 30 days before the election.

---

## ELECTION DAY AND VOTING

### Where to vote:

At your precinct's polling place. The name and number of your precinct and polling place are on your registration card. Page 3 describes the coding of your voter registration card. Polling place locations are also published in the newspaper sometime the week before the election. You may also call **Records and Elections Division at 344-5282 or 344-2565** for information.

### When to vote:

Polls are open from 7:00 a.m. to 8:00 p.m.

### How to vote:

Three methods of voting are used in Washington State: punchcard, lever machines and paper ballots. King County uses punchcard voting. If you need assistance, you may ask an election worker, before you vote, to explain how to use the voting device. You may also request assistance from two election officials of opposite political parties or a person of your choice in recording your vote. If you make an error on your ballot, you may request a replacement.

### Absentee Voting:

1. **Regular Absentee Ballot:** If you cannot vote in person, you may vote by absentee ballot. You may request an absentee ballot, either in person or by mail, as early as 45 days before the election, but no later than the day before the election.

Exception: If you are confined to the hospital and were admitted no earlier than five days before the election, you may apply for an absentee ballot up to and including the day of the election.

2. **Service Absentee Ballot:** Members of the military service may apply for an absentee ballot at any time. Such service voters will be mailed an absentee ballot for the next primary or general election, or special election.

3. **Special Absentee Ballot:** A voter who is working outside the continental United States and will be unable to return a regular absentee ballot by normal mail delivery may apply for a special absentee ballot 90 days before the primary or general election. The special absentee ballot will contain the offices and measures, if known, scheduled to appear on the ballot. The Records and Elections Division will include a list of candidates who have filed and a list of any issues that have been referred to the ballot before the application was filed.

The voter may use the special absentee ballot to write in the name of any eligible candidate for each office and vote on any measure.

4. **Ongoing Absentee Ballot:** If you are a disabled person or a person over the age of 65, you may apply for status as an ongoing absentee voter. This will entitle you to automatically receive an absentee ballot for each subsequent election through January of the next odd-numbered year. At that time, the **Division of Records and Elections** will notify you and permit you to renew your status as an ongoing absentee voter.

# 1987 GENERAL ELECTION SAMPLE BALLOT

	YES	NO		YES	NO
REFERENDUM BILL 41	<input type="checkbox"/>	<input type="checkbox"/>	SNOQUALMIE VALLEY SCHOOL DISTRICT NO. 410		
INITIATIVE MEASURE 92	<input type="checkbox"/>	<input type="checkbox"/>	DIRECTOR, DISTRICT NO. 5		
SENATE JOINT RESOLUTION 8207	<input type="checkbox"/>	<input type="checkbox"/>	Dan D. Guettler	<input type="checkbox"/>	
SENATE JOINT RESOLUTION 8212	<input type="checkbox"/>	<input type="checkbox"/>	Louise Martin	<input type="checkbox"/>	
HOUSE JOINT RESOLUTION 4212	<input type="checkbox"/>	<input type="checkbox"/>	ISSAQUAH SCHOOL DISTRICT NO. 411		
HOUSE JOINT RESOLUTION 4220	<input type="checkbox"/>	<input type="checkbox"/>	DIRECTOR, DISTRICT NO. 1		
KING COUNTY PROPOSITION NO. 1			Valerie Knecht Hoff	<input type="checkbox"/>	
Regional Health Care Capital Improvements	<input type="checkbox"/>	<input type="checkbox"/>	Karen Taylor Sherman	<input type="checkbox"/>	
KING COUNTY ASSESSOR			DIRECTOR, DISTRICT NO. 3		
Jeanette Berleen (R)	<input type="checkbox"/>		Diego Frutos	<input type="checkbox"/>	
Ruthe Ridder (D)	<input type="checkbox"/>		Bill McGlashan	<input type="checkbox"/>	
KING COUNTY COUNCIL DISTRICT NO. 6			DIRECTOR, DISTRICT NO. 5		
Bruce Laing (R)	<input type="checkbox"/>		Darlene J. Haugen	<input type="checkbox"/>	
COURT OF APPEALS, JUDGE			KENT SCHOOL DISTRICT NO. 415		
Robert W. Winsor	<input type="checkbox"/>		DIRECTOR, DISTRICT NO. 1		
PORT OF SEATTLE DISTRICT NO. 3			Robert (Bob) O'Bryan	<input type="checkbox"/>	
Paige Miller	<input type="checkbox"/>		DIRECTOR, DISTRICT NO. 2		
George Kargianis	<input type="checkbox"/>		Ken Geisen	<input type="checkbox"/>	
CITY OF BELLEVUE, COUNCIL			Heidi J. Heineman	<input type="checkbox"/>	
POSITION NO. 1			DIRECTOR, DISTRICT NO. 3		
Don Davidson	<input type="checkbox"/>		Michael Miller	<input type="checkbox"/>	
Jim Keefe	<input type="checkbox"/>		WATER DISTRICT NO. 90, COMMISSIONER		
POSITION NO. 2			Thomas L. Tasa	<input type="checkbox"/>	
Jean Carpenter	<input type="checkbox"/>		*WATER DISTRICT NO. 94		
Tom Hansen	<input type="checkbox"/>		*WATER DISTRICT NO. 105		
POSITION NO. 3			WATER DISTRICT NO. 107, COMMISSIONER		
Terry Lukens	<input type="checkbox"/>		Elmer F. Foster	<input type="checkbox"/>	
Margo Waid	<input type="checkbox"/>		*WATER DISTRICT NO. 123		
POSITION NO. 4			WATER DISTRICT NO. 127, COMMISSIONER		
Don MacKenzie	<input type="checkbox"/>		Thomas L. Calvin	<input type="checkbox"/>	
Richard Rising	<input type="checkbox"/>		FIRE PROTECTION DISTRICT NO. 10,		
CITY OF ISSAQUAH, COUNCIL			PROPOSITION NO. 1		
POSITION NO. 1			Authorizing Property Tax Levy	<input type="checkbox"/>	<input type="checkbox"/>
Ken Pease	<input type="checkbox"/>		COMMISSIONER		
POSITION NO. 2			Richard P. Landis	<input type="checkbox"/>	
Wayne Hopman	<input type="checkbox"/>		COMMISSIONER, Unexpired 2-Year Term		
POSITION NO. 3			Robert A. Lontz	<input type="checkbox"/>	
Don Raybuck	<input type="checkbox"/>		Vaughn (Jim) Merritt	<input type="checkbox"/>	
BELLEVUE SCHOOL DISTRICT NO. 405			*FIRE PROTECTION DISTRICT NO. 17		
DIRECTOR, DISTRICT NO. 1			FIRE PROTECTION DISTRICT NO. 25, COMMISSIONER		
Malcolm (Mac) Douglas	<input type="checkbox"/>		Donald J. Jensen	<input type="checkbox"/>	
Steven (Matt) Goldberg	<input type="checkbox"/>		Barry Wolborsky	<input type="checkbox"/>	
DIRECTOR, DISTRICT NO. 2			*FIRE PROTECTION DISTRICT NO. 27		
Phil Noble	<input type="checkbox"/>		FIRE PROTECTION DISTRICT NO. 37		
Sheila R. Fix	<input type="checkbox"/>		COMMISSIONER		
DIRECTOR, DISTRICT NO. 4			Henry D. Mairs	<input type="checkbox"/>	
Sherrie Mill	<input type="checkbox"/>		Henry O. Opel	<input type="checkbox"/>	
TAHOMA SCHOOL DISTRICT NO. 409			COMMISSIONER, Unexpired 2-Year Term		
DIRECTOR, DISTRICT NO. 2			Robert Kitto	<input type="checkbox"/>	
Kathy Fistonich	<input type="checkbox"/>		Alice K. Matz	<input type="checkbox"/>	
Chuck Hardaway	<input type="checkbox"/>		FIRE PROTECTION DISTRICT NO. 43, COMMISSIONER		
DIRECTOR, DISTRICT NO. 3			Mark D. Fern		
Keith Harding	<input type="checkbox"/>		Jim Wilson	<input type="checkbox"/>	
Linda Holecek	<input type="checkbox"/>		EASTGATE SEWER DISTRICT, COMMISSIONER		
DIRECTOR, DISTRICT NO. 4			Robert A. (Bob) Boscole	<input type="checkbox"/>	
Arlene Schmidt	<input type="checkbox"/>		*CEDAR RIVER WATER AND SEWER DISTRICT		
SNOQUALMIE VALLEY SCHOOL DISTRICT NO. 410			SAMMAMISH PLATEAU WATER AND SEWER DISTRICT,		
DIRECTOR, DISTRICT NO. 2			COMMISSIONER		
Richard G. Krona	<input type="checkbox"/>		Ruth W. Shearer	<input type="checkbox"/>	
DIRECTOR, DISTRICT NO. 3			*SOOS CREEK WATER AND SEWER DISTRICT		
Donald K. Gmazel	<input type="checkbox"/>		*PUBLIC HOSPITAL DISTRICT NO. 1		
			*PUBLIC HOSPITAL DISTRICT NO. 4		



# Absentee Ballot Application Certification

Mail To: ABSENTEE BALLOT Room 553, King County Administration Building,  
500 4th Avenue, Seattle, Washington 98104

TO BE FILLED OUT BY APPLICANT

PLEASE PRINT IN INK

IF KNOWN :

I HEREBY DECLARE THAT I AM A REGISTERED VOTER.

Registered Name \_\_\_\_\_

Street Address \_\_\_\_\_ # \_\_\_\_\_

City \_\_\_\_\_ Zip \_\_\_\_\_

Telephone: (Day) \_\_\_\_\_ (Evening) \_\_\_\_\_

For identification purposes only: (Optional)

Birth Date \_\_\_\_\_ Social Security No. \_\_\_\_\_

SEND MY BALLOT TO THE FOLLOWING ADDRESS:

Street Address \_\_\_\_\_ # \_\_\_\_\_

City \_\_\_\_\_

State \_\_\_\_\_ Zip \_\_\_\_\_

Country \_\_\_\_\_

TO BE VALID, YOUR WRITTEN SIGNATURE MUST BE INCLUDED

Signature \_\_\_\_\_ Date \_\_\_\_\_

Registration No. KI \_\_\_\_\_ - \_\_\_\_\_ - \_\_\_\_\_

Legislative Dist. \_\_\_\_\_

Cong. Dist. \_\_\_\_\_

THIS APPLICATION IS FOR THE FOLLOWING:

Primary Election Only Sep \_\_\_\_\_ 19 \_\_\_\_\_

General Election Only Nov \_\_\_\_\_ 19 \_\_\_\_\_

Primary & General Election Sep \_\_\_\_\_ Nov \_\_\_\_\_

Special Election Only \_\_\_\_\_ 19 \_\_\_\_\_

FOR OFFICE USE ONLY.

Precinct Code \_\_\_\_\_

Levy Code \_\_\_\_\_

Ballot Code-P \_\_\_\_\_

Ballot Code-G \_\_\_\_\_

Ballot Mailed \_\_\_\_\_

By issuance of a ballot this dept. certifies that the applicant's signature has been compared against the applicant's registration form, and that the applicant is qualified to receive a ballot.



# Absentee Ballot Application Certification

Mail To: ABSENTEE BALLOT Room 553, King County Administration Building,  
500 4th Avenue, Seattle, Washington 98104

TO BE FILLED OUT BY APPLICANT

PLEASE PRINT IN INK

IF KNOWN :

I HEREBY DECLARE THAT I AM A REGISTERED VOTER.

Registered Name \_\_\_\_\_

Street Address \_\_\_\_\_ # \_\_\_\_\_

City \_\_\_\_\_ Zip \_\_\_\_\_

Telephone: (Day) \_\_\_\_\_ (Evening) \_\_\_\_\_

For identification purposes only: (Optional)

Birth Date \_\_\_\_\_ Social Security No. \_\_\_\_\_

SEND MY BALLOT TO THE FOLLOWING ADDRESS:

Street Address \_\_\_\_\_ # \_\_\_\_\_

City \_\_\_\_\_

State \_\_\_\_\_ Zip \_\_\_\_\_

Country \_\_\_\_\_

TO BE VALID, YOUR WRITTEN SIGNATURE MUST BE INCLUDED

Signature \_\_\_\_\_ Date \_\_\_\_\_

Registration No. KI \_\_\_\_\_ - \_\_\_\_\_ - \_\_\_\_\_

Legislative Dist. \_\_\_\_\_

Cong. Dist. \_\_\_\_\_

THIS APPLICATION IS FOR THE FOLLOWING:

Primary Election Only Sep \_\_\_\_\_ 19 \_\_\_\_\_

General Election Only Nov \_\_\_\_\_ 19 \_\_\_\_\_

Primary & General Election Sep \_\_\_\_\_ Nov \_\_\_\_\_

Special Election Only \_\_\_\_\_ 19 \_\_\_\_\_

FOR OFFICE USE ONLY.

Precinct Code \_\_\_\_\_

Levy Code \_\_\_\_\_

Ballot Code-P \_\_\_\_\_

Ballot Code-G \_\_\_\_\_

Ballot Mailed \_\_\_\_\_

By issuance of a ballot this dept. certifies that the applicant's signature has been compared against the applicant's registration form, and that the applicant is qualified to receive a ballot.

# We the People

of the United States, in order to form a more perfect Union, establish Justice, insure domestic Tranquility, secure the Blessings of Liberty to ourselves and our Posterity, do hereby constitute this Constitution for the United States of America.

## Article 1

Section 1. All legislative Powers herein granted shall be vested in a Congress of the United States, which shall consist of a Senate and House of Representatives.

Section 2. The House of Representatives shall be composed of Members chosen every second Year by the People of the several States, and the Electors in each State shall have the Qualifications requisite for Electors of the most numerous Branch of the State Legislature.

No Person shall be a Representative who shall not have attained to the Age of twenty five Years, seven Years shall have elapsed since the Migration of the People, and who shall not, when elected, be seven Years a Citizen of the United States, and who shall, when elected, be, in the Case of Representatives from States, one of the Inhabitants thereof.

The Electors in each State shall have the Qualifications requisite for Electors of the most numerous Branch of the State Legislature.

Each State shall have at least one Representative, and the Number of Representatives shall not exceed one for every thirty Thousand Persons.

But no State shall have a greater Number of Representatives than it may have entitled to by Numbers.

Representatives and direct Taxes shall be apportioned among the several States which may be included within this Union, according to their respective Numbers, which shall be determined by adding to the whole Number of free Persons, including Indians bound to Service, three fifths of all other Persons.

But no Representative shall be chosen for a Term of more than two Years; and no Person shall be chosen for a second Term, unless he shall have been re-elected.

Section 3. The Senate of the United States shall be composed of two Senators from each State, chosen by the Legislature thereof, for a Term of six Years; and the Electors in each State shall have the Qualifications requisite for Electors of the most numerous Branch of the State Legislature.

No Person shall be a Senator who shall not have attained to the Age of thirty Years, and been seven Years a Citizen of the United States, and who shall, when elected, be, in the Case of Senators from States, one of the Inhabitants thereof.

The Electors in each State shall have the Qualifications requisite for Electors of the most numerous Branch of the State Legislature.

Each State shall have two Senators; and the Number of Senators shall not exceed two for every thirty Thousand Persons.

But no State shall have a greater Number of Senators than it may have entitled to by Numbers.

Section 4. The Senate and House of Representatives shall be assembled in one Place, which shall be at the City of New York, until such other Place as they shall determine.

They may adjourn from Time to Time, and may change the Place of holding their Meetings, on Condition of reporting the same to the President of the United States.

Section 5. The Senate and House of Representatives shall keep Journals of their Proceedings, and from Time to Time publish the same, excepting such Parts as may in their Judgment require Secrecy.

Section 6. The Senate and House of Representatives shall be sworn or affirmed, before entering on their Office, to support this Constitution.

Section 7. All bills for raising Revenue shall originate in the House of Representatives; but the Senate may propose or concur with Amendments as to the Form of such Bills.

Section 8. The Congress shall have Power to lay and collect Taxes, Duties, Imposts and Excises, to pay the Debts and provide for the common Defence and general Welfare of the United States; but all Taxes on Imports and Exports shall be uniform throughout the United States.

Section 9. The Congress shall have Power to borrow Money on the Credit of the United States, to regulate Commerce with foreign Nations, and among the several States, and with the Indian Tribes.

Section 10. No State shall enter into any Treaty, Alliance, or Confederation with any foreign Nation, or State, or send Ambassadors, or Consuls, or other public Ministers, or receive such Ministers, or Consuls, or other public Ministers, or receive such Ministers, or Consuls, or other public Ministers.

Section 11. The Congress shall have Power to declare War, to issue Letters of Marque and Reprisal, and to make Rules concerning Captives on Land and Water.

Section 12. The Congress shall have Power to grant Letters of Marque and Reprisal, and to make Rules concerning Captives on Land and Water.

Section 13. The Congress shall have Power to grant Letters of Marque and Reprisal, and to make Rules concerning Captives on Land and Water.

Section 14. The Congress shall have Power to grant Letters of Marque and Reprisal, and to make Rules concerning Captives on Land and Water.

Section 15. The Congress shall have Power to grant Letters of Marque and Reprisal, and to make Rules concerning Captives on Land and Water.

Section 16. The Congress shall have Power to grant Letters of Marque and Reprisal, and to make Rules concerning Captives on Land and Water.

Section 17. The Congress shall have Power to grant Letters of Marque and Reprisal, and to make Rules concerning Captives on Land and Water.

Section 18. The Congress shall have Power to grant Letters of Marque and Reprisal, and to make Rules concerning Captives on Land and Water.

Section 19. The Congress shall have Power to grant Letters of Marque and Reprisal, and to make Rules concerning Captives on Land and Water.

Section 20. The Congress shall have Power to grant Letters of Marque and Reprisal, and to make Rules concerning Captives on Land and Water.

Section 21. The Congress shall have Power to grant Letters of Marque and Reprisal, and to make Rules concerning Captives on Land and Water.

Section 22. The Congress shall have Power to grant Letters of Marque and Reprisal, and to make Rules concerning Captives on Land and Water.

BULK RATE  
U.S. POSTAGE  
**PAID**  
Seattle, Washington  
Permit No. 1216

CAR. RT. PRESORT

# 1987 VOTERS' PAMPHLET & OFFICIAL LOCAL VOTERS' PAMPHLET

RESIDENTIAL PATRON, LOCAL

- Participating Jurisdictions: King County •  
Port of Seattle • City of Bellevue • City of  
Issaquah • Bellevue School District No. 405 •  
Tahoma School District No. 409 • Snoqualmie  
Valley School District No. 410 • Issaquah  
School District No. 414 • Kent School District  
No. 415 • Water District No. 90 • Water  
District No. 107 • Water District No. 127 • Fire  
Protection District No. 10 • Fire Protection  
District No. 25 • Fire Protection District No.  
37 • Fire Protection District No. 43 • Eastgate  
Sewer District • Sammamish Plateau Water  
and Sewer District

ZIP CODES WITHIN REGION 9:  
98025 • 98027 • 98038

EDITION 9