

WA
353.1
S+2 pa
1984
ed. 2
C1

EDITION NO. 2

RECEIVED

DEC 1984

WASHINGTON
STATE LIBRARY



1 · 9 · 8 · 4

VOTERS and
CANDIDATES
PAMPHLET

Published by the Office of the Secretary of State

STATE GENERAL ELECTION NOVEMBER 6, 1984

WASHINGTON STATE LIBRARY
STATE DEPOSITORY COPY

VOTER PARTICIPATION IN ELECTION CAMPAIGNS

Any person who wishes to participate in the election campaign process through financial contributions, volunteer work or other types of involvement may contact the candidate or party of his or her choice for more information. The addresses and telephone numbers of the major and minor political parties with candidates on the general election ballot are listed below.

Washington State Democratic Party 1701 Smith Tower Seattle, WA 98104 (206) 583-0664	Citizens Party of Washington 145 N. 77th Street Seattle, WA 98103 (206) 784-9961	Libertarian Party of Washington 507 - 3rd Avenue, #1 Seattle, WA 98104 (206) 322-1475	Socialist Workers Party 5517 Rainier Avenue South Seattle, WA 98118 (206) 723-5330
Washington State Republican Party Nine Bellevue Drive, #203 Bellevue, WA 98005 (206) 451-1984	Communist Party 1408 - 18th Avenue Seattle, WA 98122 (206) 329-9171	New Alliance Party 311 - 17th Avenue East Seattle, WA 98112 (206) 324-9671	Workers World Party 1327 Yesler Way East Seattle, WA 98144 (206) 322-8272
	Independent Candidates 2031 Eastlake Avenue East Seattle, WA 98102 (206) 322-0006	Populist Party P.O. Box 33156 Seattle, WA 98133 (206) 771-7216	

DISCLOSURE REQUIREMENTS FOR CONTRIBUTIONS TO CANDIDATES AND POLITICAL COMMITTEES

Identification of Contributions: State law (RCW 42.17.120) provides that no contribution shall be made which in any manner conceals the identity of its source or in any other manner which effects concealment. State law (RCW 42.17.060) also provides that the campaign treasurer shall prepare and file with the public disclosure commission a statement containing the name of each person contributing the funds so deposited and the amount. Those not exceeding \$25 from any one person may be deposited without identifying the contributor.

State law (RCW 42.17.100) provides that any person who contributes in the aggregate amount of \$100 or more during the preceding 12-month period to any political committee not domiciled in the state of Washington or not otherwise required to report shall file with the commission within 3 days after the contribution was made a report signed by the contributor disclosing his or her name and address, the date, nature, purpose, amount and recipient of such contribution, and any instructions given as to its use or disbursement.

Candidate's and Treasurer's Duty to Report: On the day the campaign treasurer is designated, each candidate or political committee shall file with the commission and the county auditor of the county in which the candidate resides (or in the case of a political committee, the county in which the campaign treasurer resides) a report of all contributions received and expenditures made in the election campaign prior to that date, as provided by state law (RCW 42.17.080). Further reports shall be made on the 7th and 21st day immediately preceding the date of the election, within 21 days after the date of a primary election and within 21 days after the date of all other elections. This will be the final report if there is no outstanding debt or obligation and the campaign fund is closed.

The campaign treasurer shall maintain books of account reflecting all contributions within 3 business days of receipt. During the 8 days immediately preceding the date of the election, the books of account shall be kept current within 1 business day and be open for public inspection for at least 2 consecutive hours Monday through Friday, excluding legal holidays, between 8:00 a.m. and 8:00 p.m. For additional information, contact the Public Disclosure Commission, 403 Evergreen Plaza, FJ-42, Olympia, WA 98504, (206) 753-1111.

FEDERAL INCOME TAX CREDITS AND DEDUCTIONS FOR CONTRIBUTIONS

Contributions or gifts made to political parties or candidates may not be deducted as business expenses. In addition, expenses paid or incurred to take part in any political campaign on behalf of a candidate for public office are not deductible business expenses. Also, indirect political contributions, such as advertising for a political party or admission to a program with proceeds going to a political party or candidate, are not deductible as business expenses.

Presidential Election Campaign Fund Checkoff: Individuals, however, can make deductible contributions. For example, the Presidential Election Campaign Fund checkoff. This fund was established to help pay for presidential election campaigns. \$1 may be taken (\$2 on a joint return) from an individual's taxes to go to a general fund, not for any specific party, to meet the expenses of the 1984 presidential election. The contribution will not increase your tax or reduce your refund and may not be claimed as a partial credit for political contributions.

Political Contributions Tax Credit: A person may take a tax credit of up to \$50 (\$100 on a joint return) for half the political contributions he or she makes during the year. Only individuals may claim this credit. This credit may not be taken for the \$1 or \$2 amount checked on a return to go to the Presidential Election Campaign Fund.

A political contribution that qualifies for the credit is a contribution of money during the year to a qualified candidate for nomination or election to any federal, state or local office who announces his or her candidacy before the end of the following calendar year and uses the money to further the candidacy; a campaign committee operated exclusively to further the election of one or more candidates to public office; a national, state or local committee of a national political party; or a newsletter fund established and maintained by a person who holds, has been elected to, or is a candidate for public office. A contribution to the newsletter fund must be used by that person in preparing and circulating the newsletter.

A written receipt is required to prove contributions. Cancelled checks will in most cases meet this requirement. If a book is bought from a committee of a national political party at a price greater than the fair market value of the book, the contribution that may qualify for the credit is the difference between the sales price and the fair market value of the book. The amount paid to a political candidate or campaign committee for a ticket for a raffle, lottery or similar drawing for valuable prizes does not qualify for the credit. Contributions for political activities not directly related to a nomination or election campaign does not qualify for credit. For additional information, contact the local office of the Internal Revenue Service.

INTRODUCTION TO THE 1984 VOTER'S PAMPHLET

FELLOW WASHINGTONIANS,

On November 6, you will have the opportunity to vote for President and Vice President of the United States, on three state ballot measures and federal and state offices. I know this pamphlet will be useful in helping you make your decisions on the critical issues and candidates facing all of us this election year.

Washington, in 1914, was one of the first states in the Union to prepare a voters' pamphlet for its citizens. We remain in the vanguard of voter information. Editions of the Voters' Pamphlet are available on tape cassette, in braille, and in a Spanish language version. For additional copies of any version of the Voters' Pamphlet or other voter information, please call our **Voter Information Hotline**, Monday through Friday, 12 noon to 8:00 p.m., **1-800-824-VOTE!**

I want to take this opportunity to thank the many Washingtonians who help with our elections — the hundreds of volunteer voter registrars, our county auditors and their staffs, the poll workers and election day volunteers, and others who work so hard to see that our elections run smoothly.



Ralph Munro

RALPH MUNRO
Secretary of State

WASHINGTON STATE LIBRARY



AB0004 707632

Table of Contents

Arguments For and Against Initiative Measure 456	4-5
Arguments For and Against Initiative Measure 464	6-7
Arguments For and Against Initiative Measure 471	8-9
Text of Initiative Measures	10
Candidates for U.S. President and Vice President	12-21
Candidates for U.S. Representative	22-23
Candidates for State Offices	24-36
Candidates for State Legislature	37-46
List of Major and Minor Political Parties	2
Summary of Disclosure Requirements for Political Contributions	2
Summary of Federal Tax Credits for Contributions	2
Description of Office of Precinct Committeeman	11
Absentee Ballot Request Form and Instructions	47

LIBRARY USE ONLY





Initiative Measure 456

TO THE PEOPLE

NOTE: The ballot title and explanatory statement were written by the Attorney General as required by state law. The complete text of Initiative Measure 456 is contained on page 10.

Statement for

Ten years ago, before the Boldt decision, our state's salmon season stretched from April to October. This year the season lasted only 9 days! It's clear the present management system doesn't work . . .

A NEW APPROACH IS NEEDED

The record shows there are simply too many agencies and "self-regulating" Indian tribes involved in the chaotic mismanagement of our fisheries.

The multi-million dollar pricetag for this flawed "co-management" system is passed along to the state's taxpayers, while businesses are going bankrupt in record numbers (especially marine and tourist-related industries) at a time when we need to create jobs.

THERE CANNOT BE TWO SETS OF STANDARDS

For conservation's sake, catch limits and season closures should apply equally to all! Commercial netting by Indians of the spawning stocks in our rivers, lakes, and streams must stop — no one has the right to destroy our state's renewable natural resources.

CONGRESS CAN CHANGE THIS!

456 will encourage Congress to acknowledge the severe problems inherent to the present unworkable system. Congress has acted to resolve similar problems in other states, such as Alaska and Maine.

MORE THAN FISH

This isn't an isolated, regional issue — and it involves more than fish! Congress must address questions related to property rights, water and mineral claims, timber, game, hydroelectric power . . . plus unregulated gambling, illegal fireworks, untaxed cigarette and liquor sales on Indian reservations, *contrary to treaties!*

Official Ballot Title:

Shall Congress be petitioned to decommercialize steelhead, and state policies respecting Indian rights and management of natural resources be enacted?

The law as it now exists:

State law prohibits the commercialization and sale of steelhead. However, that prohibition does not apply to persons who have federally-secured treaty fishing rights. All citizens are entitled under the United States Constitution to equal protection of rights, privileges and immunities which must be recognized by the state. Federally-secured Indian treaty rights must also be recognized and respected by the state.

ALL CITIZENS MUST BE TREATED EQUALLY UNDER THE LAW

The principle of equal rights, as guaranteed under the Fourteenth Amendment to the U.S. Constitution, is the basis of "liberty and justice for all." There cannot be two classes of citizens in America. Special rights by reason of race have no place in an open, democratic society, and actually violate United States Constitutional principles.

VOTE YES ON 456 FOR EQUAL RIGHTS AND OPPORTUNITY

Rebuttal of Statement against

456 has been endorsed by such "good government" groups as the Washington State Grange, Washington State Republican Party, Washington State Sportsmen's Council . . . plus hundreds of others. Why? Because it isn't a question of breaking treaties but, rather, interpreting them *accurately* and enforcing them *fairly*.

With 456, *all* citizens (including Indians) will have full access to our resources — *on an equal treatment basis according to sound conservation policies!* No longer would there be special privileges or burdens placed upon citizens of any ethnic group. **Vote Yes!**

For additional information, call (206) 885-4456.

Voters Pamphlet Statement Prepared by:

A. L. "SLIM" RASMUSSEN, State Senator; MARY MARGARET HAUGEN, State Representative; DALE WARD, Chairman, Steelhead & Salmon Protection Action for Washington Now.

Advisory Committee: CARL CROUSE, Former Regional Director, National Wildlife Federation; DON AHRENHOLTZ, Executive Vice President, Washington State Farm Bureau; REVEREND JAMES W. SHAW, Pastor, Bellevue Baptist Church; RICHARD DALE SMITH, Former Director, Port of Tacoma; DAVID A. WELTS, Attorney and Former President, Washington State Bar Association.

The effect of Initiative No. 456, if approved into law:

This initiative would petition Congress to provide as a matter of federal law that steelhead be classified as a national game fish. Such action by Congress would prohibit the commercialization and sale of steelhead by any persons.

The initiative declares it to be state policy that natural resources, including land, water, timber, fish and game should be the management responsibility of the state alone and that such responsibility shall be exercised for the purposes of conservation, enhancement and proper utilization while fully respecting private property rights.

The initiative would also declare as a matter of state law that all citizens, including treaty Indians, have equal rights. Such a declaration, however, does not change the federally-secured treaty rights.

Statement against

456 seeks to accomplish what neither the U.S. Constitution, the U.S. Congress, nor the U.S. Supreme Court has allowed in more than 100 years . . . namely, break the promises (treaties) written by the U.S. government, signed by a U.S. President, and forced upon the Indians when millions of acres of land acknowledged to be theirs were taken from them.

INITIATIVE 456 IS UNCONSTITUTIONAL

Treaty fishing rights are protected by the U.S. Constitution. 456's requirement of exclusive state management of our natural resources unconstitutionally usurps federal law, treaties, and international agreement.

INITIATIVE 456 IS UNFAIR

456 would unfairly take property that belongs to treaty Indians without paying for the property taken. It is no different than someone taking your home or car without paying for it.

INITIATIVE 456 IS ANTI-CONSERVATION

456 would destroy the very important and recent progress made in increasing and saving our salmon runs. This progress resulted from cooperation between our state government, sport and commercial fishermen, environmentalists, and Indian tribes.

INITIATIVE 456 IS IRRESPONSIBLE

456 would destroy the basic culture and heritage of Native Americans and break contracts (treaties) made with them by our federal government. It is so irresponsible, unfair and unconstitutional that it is opposed by both candidates for governor, the Washington Association of Churches, most daily newspapers in the state, the Washington Charter Boat Association, and other important fishing groups. 456 is opposed by

Senator Dan Evans, and most of our state's U.S. congressional delegation.

A CONTRACT IS A CONTRACT

The United States entered into these treaties to gain tribal lands for early pioneers. These treaties are contracts. To break a valid contract is wrong!

VOTE "NO" ON INITIATIVE 456

Rebuttal of Statement for

Initiative 456 has become known statewide as the *Condemned Initiative* — *Condemned* by every major church denomination because *it's immoral*; *Condemned* by sports fishing organizations because *it won't grow one fish*; *Condemned* by organized labor because *it won't provide jobs*; *Condemned* by constitutional lawyers because *it's unconstitutional*; *Condemned* by republican and democratic congressmen because *it's unworkable*; *Condemned* because, if passed, *it would cost non-Indian taxpayers millions upon millions of dollars!*

For additional information, call (206) 632-0500.

Voters Pamphlet Statement Prepared by:

GARY LOCKE, State Representative; MIKE LOWRY, U.S. Representative; ROD CHANDLER, U.S. Representative.

Advisory Committee: RUTH COFFIN, President, League of Women Voters of Washington; LOREN ARNETT, Executive Minister, Washington Association of Churches; CHUCK GITTINGS, Vice President, Washington State Labor Council; FRANK GAFFNEY, Trout Unlimited — Northwest Steelhead and Salmon Council; STAN CECIL, President, Washington Environmental Council.



Initiative Measure 464

TO THE PEOPLE

NOTE: The ballot title and explanatory statement were written by the Attorney General as required by state law. The complete text of Initiative Measure 464 is contained on page 10.

Official Ballot Title:

Shall the values of trade-ins of like kind property be excluded from the selling price for the sales tax computation?

The law as it now exists:

State and local sales and use taxes are based on the selling price of the items involved which includes the value of any trade-in as well as payments in money.

Statement for

Initiative 464 is a bipartisan effort to correct and modify an existing sales tax inequity. Currently, an allowance for the trade-in value is not subtracted before computing sales tax on a purchase.

Many consumers resent having to pay sales tax on an amount that is *higher* than the net purchase price. To use an example, on the purchase of a \$6,000 car with a \$2,000 trade-in, most people feel it would be reasonable to pay sales tax on the \$4,000 difference, not on the \$6,000 as the current law demands.

Forty states either allow credit for trade-ins when computing sales tax, or have no sales tax at all. Of the ten states that operate the way we do now, *Washington has the highest sales tax rate.*

We believe that giving an allowance for the trade-in value before computing sales tax would stimulate sales and would offset any possible loss of revenue.

Initiative 464 would give a significant break to consumers by reducing the amount on which sales tax is paid by excluding the trade-in value of like-kind property from the amount taxable. "Like-kind" is defined as: car for car, tractor for tractor, appliance for appliance, part for part, etc. Initiative 464 would apply to any purchase whether it be new or used.

This is a tax modification that is fair and long overdue. We urge you to vote YES for Initiative 464.

Rebuttal of Statement against

The latest revenue projection for the next biennium is \$9.9 billion, and current expenses are \$8.1 billion. *Washington can afford I-464!*

This is *not* a tax preference for special interests. I-464 will help *every household in the state*, even do-it-yourselfers who repair their own cars. It is *not* limited to vehicles and luxury items.

Consumers already pay sales tax once on a trade. *Paying again is a double tax.*

Vote YES I-464.

For additional information, call (206) 575-1146.

Voters Pamphlet Statement Prepared by:

AL BAUER, State Senator; EUGENE PRINCE, State Representative; PAUL ZELINSKY, State Representative.

Advisory Committee: GLYN CHANDLER, State Representative; H. A. (BARNEY) GOLTZ, State Senator; GARY NELSON, State Representative; IRV NEWHOUSE, State Senator; LOIS STRATTON, State Representative.

The effect of Initiative No. 464, if approved into law:

If approved, this initiative would exclude from the selling price, for sales and use tax purposes, the value of a trade-in of property of like kind to that which is being purchased. Thus, for example, when an automobile is traded in on the purchase of another automobile, the value of the trade-in automobile would be excluded from the sales and use tax computations.

Statement against

TAX LOOPHOLE FOR THE BIGGEST SPENDERS

This is another big tax loophole giving the most benefit to the biggest spender. The largest exemption will go to the guy who buys a luxury car and trades in frequently. The least goes to the buyer of a lower priced car who holds it longer than the present average of seven years.

HELP FOR JAPAN AND DETROIT?

This initiative is proposed in the name of economic development, principally to stimulate automobile sales. This may help Japan and Detroit, but not Washington. Even Michigan repealed its trade-in exemption this year because the loss far exceeded the gain! And any incentive to buy foreign cars only worsens our trade deficit.

WILL HIGHER EDUCATION BE CUT BY THE \$50 MILLION LOSS?

This initiative will slash state revenues by \$50 million in 1985-87 according to the Department of Revenue. (Local government loses another \$9 million.) The higher education budget is the most vulnerable to cuts because it is not protected by the Constitution or legal mandates. That could mean reductions for community colleges, University of Washington, Washington State University, and regional universities. Cuts will threaten our newest programs designed to encourage high technology training and jobs.

WILL THIS LOOPHOLE RESULT IN HIGHER SALES AND B & O TAXES?

The past record is clear. Tax preferences for special interests forced big increases in sales and business and occupation

taxes during the recent recession. The damage to our economy of high rates and narrowing tax base is nationally recognized, and even featured in *The Wall Street Journal*. It could get even worse—if the Legislature raises taxes to avoid the \$50 million cuts.

Rebuttal of Statement for

It isn't "fair" — and it doesn't make sense — to give the biggest tax break to the person who can afford to trade in last year's luxury car, or yacht, for this year's model, while keeping the same high sales tax on necessities like children's shoes and school supplies.

Voters Pamphlet Statement Prepared by:

HELEN SOMMERS, State Representative; A.N. "BUD" SHINPOCH, State Senator; DENNIS BRADDOCK, State Representative.

Advisory Committee: GLENN PASCALL, Former Director, Department of Revenue; MARY ELLEN MCCAFFREE, Former Director, Department of Revenue; GEORGE KINNEAR, Former Director, Department of Revenue; MARVIN WILLIAMS, President, Washington State Labor Council.



Initiative Measure 471

TO THE PEOPLE

NOTE: The ballot title and explanatory statement were written by the Attorney General as required by state law. The complete text of Initiative Measure 471 is contained on page 10.

Statement for

Initiative 471 does not change the abortion law. That law was passed by vote of the people in 1970. They wanted to give women the right of choice but did not expect to have to foot the bill!

RESPECT FOR MORAL BELIEFS

Out of respect for those who are steadfast in their belief that abortion is morally wrong, it is only fair that they are not forced to support what they are strongly opposed to.

A BETTER USE FOR YOUR MONEY

In the last two years, 2.6 million dollars was spent to abort over 8,000 unborn babies in this state. This money should be used instead to prevent and fight child abuse.

35 OTHER STATES DO NOT FUND WELFARE ABORTIONS

Passage of 471 would simply add Washington to the list of other states and the federal government which do not fund welfare abortions—excepting to save the life of the mother. The U.S. Supreme Court has ruled that medically unnecessary abortions need not be funded. We think it is time Washington gets out of the abortion business!

471 WILL NOT INCREASE WELFARE COSTS

Those who promote abortion say costs will go up on the basis that the poor are better "dead than fed." The Washington State House Social and Health Services Committee staff made a survey recently of states which have stopped funding welfare abortions. The survey found that there was no evi-

Official Ballot Title:

Shall public funding of abortions be prohibited except to prevent the death of the pregnant woman or her unborn child?

The law as it now exists:

Subject to limitations, state law permits the premature termination of pregnancies even though the purpose of the termination is to prevent the development and birth of a child. There is a state-funded program, for those who are eligible, to pay the costs of termination of such pregnancies.

dence that those states have experienced any increase in welfare costs.

471 would prevent the spending of tax dollars to fund welfare abortions. Medical services to save the life of the mother or her unborn child, in case she were in critical condition, would still be funded.

VOTE YES ON INITIATIVE 471

Rebuttal of Statement against

• *YOU OPPONENTS* have made *FALSE* statements against 471. You hope to confuse and panic the voters. That is dishonest and *WRONG!* • 471 does *NOT* prohibit abortions! • It does *NOT* prevent funding when a mother's life is endangered! • It does *NOT* raise welfare costs! • It is *NOT* extreme!

Teenage daughters of *WEALTHY PARENTS* also qualify for *ABORTION FUNDING!* *YOU* who refuse to love and care for your innocent babies, *DON'T MAKE ME PAY FOR YOUR ABORTIONS!!!*

For additional information, call (509) 487-1159, (206) 472-4380, or (206) 692-2502.

Voters Pamphlet Statement Prepared by:

MARGARET HURLEY, State Senator; ELLEN CRASWELL, State Senator; MIKE PADDEN, State Representative.

Advisory Committee: A. L. "SLIM" RASMUSSEN, State Senator; STEVE FUHRMAN, State Representative, ROGER VAN DYKEN, State Representative; STEVE LARGENT; JOHN HURLEY.

The effect of Initiative No. 471, if approved into law:

This initiative would not change the conditions under which pregnancies can legally be prematurely terminated. However, public funds could no longer be used by the State of Washington, its agencies or local governments to pay for or reimburse the costs of prematurely terminating a pregnancy unless the medical services involved are for the purpose of preventing the death of the pregnant woman or to protect the life of the unborn child.

Statement against

BEWARE OF INITIATIVE 471's BALLOT TITLE: IT DOES NOT TELL THE TRUTH—

Contrary to the official ballot title promise, approval of 471 would instantly prohibit *all* legally funded abortions in Washington State. It does not obligate the Legislature even to consider funding abortions when a pregnant woman's life could be lost.

471 IS TOO EXTREME—

471 immediately eliminates presently legal abortion funding for low-income women . . . • *even when a pregnant woman's life is in danger;* • *even when a pregnant woman's health is threatened;* • *even when a woman's pregnancy is caused by rape;* • *even in cases of severe genetic defects;* • *yes, even when a young girl's pregnancy is caused by incest.*

471 IS TOO EXPENSIVE—

471 is an extremist proposal for which *all* taxpayers would pay heavily. 471 prohibits state payment for safe legal abortions for low-income women. Last year, Washington State paid \$1,281,202 for 4,067 legal abortions for low-income women. If 471 were law, and those same low-income women were forced to complete their pregnancies at taxpayers expense, the cost would be in excess of \$8,500,000 for delivery alone.

471 IS UNJUST—

471 does not affect rich women's abortions, it ends medically safe abortions *only* for the poor. 471 would force *only* poor women to bear unwanted children they cannot provide for. 471 denies *only* to poor women the right to act according to their own religious beliefs.

Rebuttal of Statement for

• It's not true or realistic that taxpayers only need to support government expenditures with which they agree. • It's not true that abortion to save the life of the mother *would* be funded under 471. • It's not true that the state is in the "abortion business" when it funds both maternity care and abortion. • It's not true that the state expects no increase in welfare costs if 471 passes.

VOTE NO ON INITIATIVE 471

For additional information, call (206) 322-5655.

Voters Pamphlet Statement Prepared by:

JANICE NIEMI, State Representative; AL WILLIAMS, State Senator; GENE STRUTHERS, State Representative.

Advisory Committee: CHANNING M. BOWEN, M.D., Pediatrician; RUTH COFFIN, President, League of Women Voters of Washington; REVEREND DR. DAVID COLWELL, Former Minister, Plymouth Congregational Church; KEN FISHER, Former President, Fisher Flour Mills; President, Fisher Properties; JOEL PRITCHARD, U.S. Representative.



COMPLETE TEXT OF Initiative Measure 456

AN ACT Relating to state government; and creating new sections.
BE IT ENACTED BY THE PEOPLE OF THE STATE OF WASHINGTON:

NEW SECTION. Sec. 1. The people of the state of Washington declare that an emergency exists in the management of salmon and steelhead trout resources such that both are in great peril. An immediate resolution of this crisis is essential to perpetuating and enhancing these resources.

NEW SECTION. Sec. 2. The people of the state of Washington petition the United States Congress to immediately make the steelhead trout a national game fish protected under the Black Bass Act.

NEW SECTION. Sec. 3. The people of the state of Washington declare that conservation, enhancement, and proper utilization of the state's natural resources, including but not limited to lands, waters, timber, fish, and game are responsibilities of the state of Washington and shall remain within the express domain of the state of Washington.

While fully respecting private property rights, all resources in the state's domain shall be managed by the state alone such that conservation, enhancement, and proper utilization are the primary considerations. No citizen shall be denied equal access to and use of any resource on the basis of race, sex, origin, cultural heritage, or by and through any treaty based upon the same.

NEW SECTION. Sec. 4. The people of the state of Washington declare that under the Indians Citizens Act of 1924, all Indians became citizens of the United States and subject to the Constitution and laws of the United States and state in which they reside. The people further declare that any special off-reservation legal rights or privileges of Indians established through treaties that are denied to other citizens were terminated by the 1924 enactment, and any denial of rights to any citizen based upon race, sex, origin, cultural heritage, or by and through any treaty based upon the same is unconstitutional.

No rights, privileges, or immunities shall be denied to any citizen upon the basis of race, sex, origin, cultural heritage, or by and through any treaty based upon the same.

NEW SECTION. Sec. 5. The secretary of state shall transmit copies of this act to the president of the United States senate, the speaker of the United States house of representatives, and each member of congress.

NEW SECTION. Sec. 6. If any provision of this act or its application to any person or circumstances is held invalid, the remainder of the act or the application of the provision to other persons or circumstances is not affected.



COMPLETE TEXT OF Initiative Measure 464

AN ACT Relating to sales taxation; amending section 82.08.010, chapter 15, Laws of 1961 as last amended by section 1, chapter 55, Laws of 1983 1st ex.sess. and RCW 82.08.010; and creating a new section.

BE IT ENACTED BY THE PEOPLE OF THE STATE OF WASHINGTON:

NEW SECTION. Sec. 1. The purpose of this initiative is to reduce the amount on which sales tax is paid by excluding the trade-in value of certain property from the amount taxable.

Sec. 2. Section 82.08.010, chapter 15, Laws of 1961 as last amended by section 1, chapter 55, Laws of 1983 1st ex.sess. and RCW 82.08.010 are each amended to read as follows:

For the purposes of this chapter:

(1) "Selling price" means the consideration, whether money, credits, rights, or other property except trade-in property of like kind, expressed in the terms of money paid or delivered by a buyer to a seller ((-a+-)) without any deduction on account of the cost of tangible property sold, the cost of materials used, labor costs, interest, discount, delivery costs, taxes, or any other expenses whatsoever paid or accrued and without any deduction on account of losses; but shall not include the amount of cash discount actually taken by a buyer; and shall be subject to modification to the extent modification is provided for in RCW 82.08.080.

When tangible personal property is rented or leased under circumstances that the consideration paid does not represent a reasonable rental for the use of the articles so rented or leased, the "selling price" shall be determined as nearly as possible according to the value of such use at the places of use of similar products of like quality and character under such rules as the department of revenue may prescribe;

(2) "Seller" means every person, including the state and its departments and institutions, making sales at retail or retail sales to a buyer or consumer, whether as agent, broker, or principal, except "seller" does not mean the state and its departments and institutions when making sales to the state and its departments and institutions;

(3) "Buyer" and "consumer" include, without limiting the scope hereof, every individual, receiver, assignee, trustee in bankruptcy, trust, estate, firm, copartnership, joint venture, club, company, joint stock company, business trust, corporation, association, society, or any group of individuals acting as a unit, whether mutual, cooperative, fraternal, nonprofit, or otherwise, municipal corporation, quasi municipal corporation, and also the state, its departments and institutions and all political subdivisions thereof, irrespective of the nature of the activities engaged in or functions performed, and also the United States or any instrumentality thereof;

(4) The meaning attributed in chapter 82.04 RCW to the terms "tax year," "taxable year," "person," "company," "sale," "sale at retail," "retail sale," "sale at wholesale," "wholesale," "business," "engaging in business," "cash discount," "successor," "consumer," "in this state" and "within this state" shall apply equally to the provisions of this chapter.



COMPLETE TEXT OF Initiative Measure 471

AN ACT Relating to abortion; and adding a new section to chapter 74.09 RCW.

BE IT ENACTED BY THE PEOPLE OF THE STATE OF WASHINGTON:

NEW SECTION. Sec. 1. There is added to chapter 74.09 RCW a new section to read as follows:

Public funds shall not be used by the state of Washington, its agencies, or political subdivisions to pay or otherwise reimburse, either directly or indirectly, any person, agency, or facility for the performance of any induced abortion: PROVIDED, that the state legislature may authorize and appropriate funds for otherwise eligible beneficiaries to be used for those medical services necessary to prevent the death of either a pregnant woman or her unborn child under circumstances where every reasonable effort is made to preserve the life of each.

THE OFFICE OF PRECINCT COMMITTEEMAN

In addition to the various state and county offices which will appear upon the general election ballot, most voters will have the opportunity to vote for the office of "precinct committeeman".

WHO IS ELIGIBLE

State law (RCW 29.42.040) provides that any person who is a registered voter and a member of a major political party may become a candidate for the office of precinct committeeman by filing a declaration of candidacy and paying a \$1 filing fee to the county auditor. Since voters do not register by political party in Washington, a candidate declares himself or herself to be a Democrat or a Republican at the time he or she files for the office. The filing period for the office of precinct committeeman begins at the same time as the filing period for other partisan offices (the last Monday in July in even-numbered years), and lasts for three weeks, ending on the third Friday following that date.

ELECTION OF PRECINCT COMMITTEEMEN

Candidates for precinct committeeman do not appear on the primary ballot but rather are placed directly on the general election ballot, and the candidate receiving the most votes in his or her precinct for each political party is declared elected. State law (RCW 29.42.050) does provide, however, that to be declared elected, a candidate must receive at least 10% of the number of votes cast for the candidate of his or her party receiving the greatest number of votes in that precinct.

TERM OF OFFICE AND VACANCIES

The term of office for anyone elected to the office of precinct committeeman is two years, and commences upon the official canvass of election returns by the county canvassing board. Should a vacancy occur in the office (caused by death, disqualification, resignation, or failure to elect), the usual process is for the chairman of the party central committee to fill the vacancy by appointment. Appointments to fill vacancies cannot be made between the state general election and the organization meeting of the county central committee, which must be held prior to the second Saturday in January following the election of precinct committeemen.

DUTIES OF PRECINCT COMMITTEEMEN AS MEMBERS OF THE COUNTY AND STATE CENTRAL COMMITTEES

1. Each precinct committeeman is a member of the county central committee. The county central committee has the authority to fill vacancies on the party ticket for partisan county offices and for legislative offices in districts entirely within that county when no candidate files for such a position or when a candidate or nomi-

nee dies or is disqualified leaving no candidate of that party for such an office; they may also nominate persons for appointment to these offices if an incumbent of that party resigns.

2. The state central committee has the authority under state law (RCW 29.42.020) to:
 - Call caucuses and conventions.
 - Provide for the election of delegates to national nominating conventions.
 - Fill vacancies on the party ticket for any federal, state or legislative office which encompasses more than one county.
 - Nominate persons to fill vacancies in state or legislative offices caused by resignation or death of an incumbent of that party.
 - Provide for the nomination of presidential electors.
 - Perform other functions inherent in such an organization.

NON-STATUTORY DUTIES AND RESPONSIBILITIES OF PRECINCT COMMITTEEMEN

Specific duties and responsibilities of a precinct committeeman are usually determined by either the county or state central committees. The following duties are commonly assigned to precinct committeemen by their party organization:

- Keep informed on current issues and candidates, study the party platform.
- Attend meetings of county committees and actively participate in fund-raising activities.
- Obtain lists of registered voters from the County Auditor's office.
- Canvass the precinct and become acquainted with the voters residing therein.
- Establish a record of eligible voters and party members within the precinct.
- Encourage voter registration within the precinct.
- Distribute party election materials during election campaigns.
- Recommend party members to work as precinct election officers.
- Encourage voters to get out and vote on election day.
- Encourage the use of absentee ballots.
- Hold precinct caucuses at certain selected times for the purpose of adopting resolutions and selecting delegates to the county conventions.

Individuals who are interested in serving as precinct committeemen should contact the chairman of the county central committee of their party or the state committee office of that party. Their addresses are as follows:

Washington State
Republican Party
Nine Lake Bellevue Drive, #203
Bellevue, WA 98005

Washington State
Democratic Central
Committee
1701 Smith Tower
Seattle, WA 98104



President and Vice-President



**Ronald
REAGAN**
Republican



**George
BUSH**
Republican

When I took office in 1981, America was in the worst economic mess since the Great Depression.

Years of government overspending and overtaxation were taking their toll. Productivity, industrial production and real wages were down. The only things going up were prices, taxes and the size of government. Double-digit inflation and increasing taxes reduced the reward for hard work, thrift and entrepreneurial risk taking.

In 1981, we offered a bold, new plan for economic recovery. The result has been the strongest economic recovery in over 30 years. We have achieved what the cynics said could never be done: real economic growth and lower inflation and unemployment rates.

Six million new jobs have been created in the last 20 months, and Americans are now looking to the eighties as a decade of growth and opportunity.

Of course, no issue is more important than keeping the peace and reducing the level of nuclear arms. By rebuilding America's defenses, we have made America safer, and we're hopeful the Soviets will join us in arms reduction agreements.

The last four years have been a real success story for America. Now we can look forward and offer the American people a vision of opportunity and progress based on a four-year record of success.

Back in 1976, the Democrats came up with a gimmick to rate the economy. They added the inflation and unemployment rates, and got what they called a "misery index." In 1976, it came to 12.6 percent. But in the 1980 election, they didn't mention the misery index.

That's because they drove the misery index up over 20 percent. In 1984, you probably won't hear our opposition mention the misery index either. That's because it's down to 11.6 percent — below where it was 11 years ago — and dropping.

America is moving forward into a decade of prosperity and opportunity for all Americans. We are on the edge of a new frontier in high technology as vast as the very frontier of space. We have regained optimism and faith in ourselves, our families and our nation.

Although we've accomplished much in the last four years, there is still much to be done.

Some people ask why I don't just retire and go to that ranch Nancy and I love so much. But that would mean quitting before the job is done, and I've never been a quitter.

I see four great goals that we can unite behind to keep America free, secure and at peace for the eighties. First, we must ensure steady economic growth without inflation; continue our program of tax relief and get a handle on government spending.

Second, we must develop space, America's next frontier, through the construction of a permanent manned space station, and the promotion of private sector investment in space.

Third, we must strengthen our traditional values of faith, family, work and neighborhood.

And finally, we must pursue a lasting and meaningful peace with the Soviet Union while helping develop stable democratic institutions around the world.

President and Vice-President



**Walter F.
MONDALE**
Democrat

Campaign Address:
2412 Second Avenue
Seattle, WA 98121
Telephone: (206) 467-2700



**Geraldine
FERRARO**
Democrat

The future of the United States is at stake on November 6, 1984. On this election day, Americans will have the opportunity to choose between two different visions of that future.

Peace: Walter Mondale and Geraldine Ferraro believe that they can freeze nuclear arms, reduce the number of weapons, and ensure that not one of them ever goes off.

We are a strong nation, and we will always defend our cherished freedom. But, in a world with 50,000 nuclear warheads, a President must work for peace. Instead, Ronald Reagan has dangerously escalated the arms race. He is the first President since the bomb went off not to negotiate an arms control agreement.

Walter Mondale and Geraldine Ferraro will follow President Kennedy's example by challenging the Soviets with tough arms control proposals that increase our security and protect our future.

Economy: Our current President's tax cuts for the rich, and his blank check for the military, have caused the largest budget deficits in American history. Walter Mondale and Geraldine Ferraro know that these deficits have created record-high real interest rates at home and an overvalued dollar abroad. As a result, America has lost its competitive edge in foreign trade markets.

Mondale and Ferraro understand the Northwest. They know that foreign trade is especially important to the Northwest economy, and have clearly stated how they will cut deficits and bring interest rates down.

Environment: Walter Mondale and Geraldine Ferraro share the Northwest's concern for the environment. They are committed to cleaning up our polluted air and water and dangerous toxic waste dumps. Ronald Reagan has shown a complete disregard for the health of our environment.

Fairness: Americans want a President who serves all the people, not only the rich. Walter Mondale and Geraldine Ferraro will lead us on a humane and decent course again.

Walter Mondale and Geraldine Ferraro have a lifelong commitment to ensuring that our elderly are treated with respect and dignity. Ronald Reagan intends to make further cuts into the already meager provisions of Social Security and Medicare.

Walter Mondale and Geraldine Ferraro believe that education is essential to America's economic strength, that equal educational opportunities must be provided for all.

Walter Mondale and Geraldine Ferraro want an America in which our children will look forward to the years ahead of them. When you vote for President this November, think about the future.



President and Vice-President



**Dennis
SERRETTE**
New Alliance

Campaign Address:
Independents for Dennis Serrette
216 West 102 Street
New York, NY 10025
Telephone: (212) 864-3101



**Nancy
ROSS**
New Alliance

The independent campaign of Dennis Serrette for President and Nancy Ross for Vice President carries forward the social vision for jobs, peace and justice fought for by Reverend Jesse Jackson in the democratic primaries. Actively backed by many of Jackson's key state

and local supporters, it is reaching out to the millions of Jackson voters who saw democratic leaders in San Francisco ignore their demands for enforcement of the Voting Rights Act, for a break in diplomatic and commercial relations with apartheid South Africa, for a 25% slash in the awesome military budget, and for a renewal of the Democrats' former promises of a war on poverty.

Now on the ballot in 33 states, the "Rainbow Alliance" campaign is fueled by thousands of volunteers who are conducting a referendum with the use of "Pledge Cards," millions of which will be signed by November by people pledging their votes to Mr. Serrette. By signing a card, people are saying that they voted in the primaries not for Jackson the *Democrat*, but for Jackson the *Independent* leader who voiced their aspirations *against* the big business controlled party bosses.

Longstanding collusion between Democratic and Republican national leaders has resulted in massive slashes in social services, jobs and health care, while spending on nuclear weapons has mushroomed. A majority of Congressional Democrats voted on appropriations which have doubled the Pentagon's budget in the past four years and approved the placement of cruise and Pershing nuclear missiles on European soil. The Democratic Party also sanctioned the invasion of Grenada by U.S. Marines and the current massing of American troops in Central America as a threat to the socialist republic of Nicaragua and the people of El Salvador, who face daily brutalities at the hands of an American-supported military dictatorship. Behind the "lesser of two evils" public relations image of Walter Mondale and the Democrats, they have embraced the agenda of conservative right, Mondale's platform calls for a 5% increase in Reagan's own "Star Wars" military budget, guarantee *no* jobs programs at a time of mounting unemployment, and promises *not* to restore any significant funding to child nutrition programs, legal services to the poor, education, housing programs or welfare benefits.

Mr. Serrette is uniquely qualified to lead a campaign that will carry on after November towards the creation of a *permanent* third party movement for America's Blacks, Latinos, women, gay people, working and poor families. A cofounder of the Coalition of Black Trade Unionists, he served as Chairperson of the National Committee to Overturn the Bakke Decision and led a 20,000 strong March Against Racism in Boston in 1974 to protect Black school children being bussed to South Boston schools. In New York City, Mr. Serrette was Chairperson of the Coalition to Save Sydenham Hospital and was the first elected Vice President of Local 1101, Communications Workers of America. Also a founder of the South Africa Freedom Day Coalition, Mr. Serrette has spearheaded efforts to support liberation movements in southern Africa.

President and Vice-President



**Mel
MASON**
Socialist Workers

Candidate did not
submit a photograph
for publication.

**Matilde
ZIMMERMAN**
Socialist Workers

The central issue in U.S. politics today is Washington's drive toward a new Vietnam war in Central America and the Caribbean. This coming regional war — a war in defense of corporate profits and against workers and farmers fighting for the right to control their countries and their lives — has already begun. The CIA-financed attacks

against Nicaragua, all out support to the murderous dictatorship in El Salvador, the blockade and war hysteria against Cuba, massive war "games" and naval "exercises" in the Caribbean and Honduras, the invasion and continuing occupation of Grenada — these are all aspects of this war. In addition, this war — begun under the Carter-Mondale administration — is completely bipartisan.

This is a war with two fronts, however. The second front is right here at home, and consists of all the attacks against our rights and living standards that have been taking place throughout the "takeback decade": union-busting and concession contracts, blows to the rights of Blacks and women, stepped-up deportations of undocumented workers, the driving of farmers from their land, and a vicious assault on democratic rights in general.

The principal message of our campaign is that all the problems facing us have a common source: the capitalist system. The same tiny class of corporate billionaires and bankers, using their government and their two political parties — the Democrats and Republicans — is waging this war at home and abroad. We cannot look to the Democrats or Republicans for change. Gains that working people won in the past were not the result of elections, but of organized struggles in our own interests. We need to replace the current government of big business with a government run and organized in the interests of workers and farmers. To fight for such a government we need our own political party, a labor party based on a fighting union movement that champions the struggles of workers, farmers, Blacks and women, and that leads the resistance to Washington's war drive.

We propose: *Bring U.S. troops in Grenada and Central America home now!* Stop the war against Nicaragua. End the blockade against Cuba. Cut all ties with the dictatorship in El Salvador. Unilateral U.S. nuclear disarmament. No draft. *Stop union busting.* No government interference in union affairs. *Jobs for all.* Shorten the work week with no cut in pay. With the billions now spent on war, launch a public works program to build schools, hospitals, roads and childcare centers to provide jobs at union wages. *Stop racist attacks.* Affirmative action, including quotas, in education and employment. Desegregate schools, including through busing. Stop the deportation of undocumented workers. *Defend democratic rights.* Stop government and employer attacks on constitutional liberties. Abolish the death penalty. *Defend women's rights.* For safe, legal abortion rights. Support the ERA. *Stop farm foreclosures!* For a moratorium on all debts. Extend low-interest credit for machinery, seed and fertilizer. Guarantee family farmers an income adequate to meet their costs of production and sustain a decent living.



President and Vice-President



**David
BERGLAND**
Libertarian

Campaign Address:
Bergland for President
P.O. Box 4097
Bellingham, WA 98227
Telephone: (206) 676-9999



**Jim
LEWIS**
Libertarian

In 1776, Thomas Jefferson wrote, "We hold these truths to be self-evident, that all men are created equal, that they are endowed by their Creator with certain unalienable rights, that among these are life, liberty, and the pursuit of happiness." These words summed up the motives and ideals of the American revolutionaries. David Bergland and Jim Lewis are saying the society can and *should* be run by these ideals. Individuals have the right to control their own lives, and must

take responsibility for their actions. Government today is run according to the opposite principle. Individuals are treated as the property of the state and are taxed, regulated, and prevented from acting according to their own judgment. Peace and prosperity are threatened every day by bureaucratic meddling at home and overseas, whether the President is a Democrat or a Republican. Libertarians offer a real change: full respect for your independence and integrity as an individual, an end to government trespassing on your property, and security for all your peaceful and honest activities in your business, family life, church or temple. The dynamic Libertarian movement brings together people who see that economic and personal liberty are two sides of the same coin and who are willing to stand up for their beliefs.

Mr. Bergland, 49, was Editor-in-Chief of the Law Review at the University of Southern California, served as a law school professor, and has represented many clients against IRS oppression. He was a candidate for Vice-President in 1976.

Mr. Lewis, 50, a Connecticut businessman, is President of a public policy organization promoting free market solutions to local problems.

Let's look at some of the issues:

There was no permanent income tax before 1914, and the country prospered. Since then, the federal bureaucracy has been our major growth industry. Government waste, corruption, inefficiency, and failure are a result of financing programs via taxes — a process which robs our wallets while it removes any true measure of accomplishment and all incentive to improve productivity. Inflation is caused by the Federal Reserve Bank. Those on pensions and earning wages are the victims. We need to halt the printing of paper money and return to a dollar that's sound and honest.

Despite Reagan's 1980 promise to end draft registration, he has instead prosecuted and jailed young men who have not registered. The use of slaves to defend freedom is intolerable. The present U.S. military buildup is robbing Americans blind and threatening the destruction of the world. Instead, we must take active steps toward mutual arms reduction, including sensible steps on our own such as retirement of all U.S. land-based missiles. These missiles are simply tempting targets that invite an attack on our homeland. Our foreign policy must protect the liberty of the American people by guarding American territory from attack. Instead, the U.S. government is trying to act as the world's policeman. An estimated \$229 billion (75% of Reagan's 1985 military budget) is devoted to meddling and entanglements overseas in Western Europe, the Far East, the Middle East, and Central America.

Over 50 Libertarians holding public offices across the country are proof that principle and practicality can mix, and that our candidates do live up to their promises and actually solve problems. A vote in 1984 for either the Republican incumbent or his Democratic challenger will simply tell these traditional politicians that you're pleased with what they've been doing to you for years. A vote for either is wasted.

President and Vice-President



**Sonia
JOHNSON**
Citizens

Candidate did not
submit a photograph
for publication.

**Richard
WALTON**
Citizens

Sonia Johnson is a feminist and peace activist, lecturer and author.

Her unique contribution to this year's political discussion is that feminism, far from being a "single issue," is a way of looking at all the issues, a perspective based upon the principles of nonviolence, cooperation and nurturance. She presents a widely-shared progressive perspective on the critical issues: drastic cuts in the military budget — including an immediate freeze of all manufacture and sale of arms and

an end to intervention; an end to violence against women; genuine human rights for everyone — including jobs, education, housing and health care; decentralization of economic power; a healthful, nonnuclear environment for all species.

Dr. Johnson is the first alternative party candidate and the first woman in this country's history to receive primary matching funds from the federal government. On August 15, 1984, she filed a complaint with the Federal Communications Commission to protest exclusion of alternative candidates and their views from the nationally televised presidential debates.

An outspoken critic of Reagan's foreign policy, Sonia travelled to Honduras, Nicaragua and El Salvador in December 1983 as a member of a women's delegation. In Geneva, Switzerland in the Spring of 1984, she cofounded the Women's International Disarmament Alliance, a network which brings women together from many countries to plan unified action for peace. For many years, Sonia has participated in protests across the country for peace and equal rights. She was excommunicated from the Mormon Church in December 1979 for her outspoken support of the Equal Rights Amendment.

She received her doctorate from Rutgers University in 1965 and taught English and education at American and foreign universities. Her book *From Housewife to Heretic*, was published November 1981 by Doubleday. Dr. Johnson is 48 years old and lives in Arlington, Virginia with her children.

Richard Walton has been active in the Citizens Party — which is the official sister of the West German Green Party — since its early days.

Walton is best known for his books critical of American foreign policy. Perhaps the most widely known of these is *Cold War and Counter-Revolution: The Foreign Policy of John F. Kennedy*, published by Viking Press in 1972. It was the first book-length study critical of Kennedy from the left. It is widely used in college history and political science courses.

Walton has also written on political and social questions for such publications as the New York Times, The Nation, The New Republic, The Washington Post, Village Voice, Chicago Tribune, Newsday, The Saturday Review, and the Providence Journal. He was the principal United Nations correspondent for the Voice of America from 1962-67. Earlier, he was producer-host of VOA's "Report to Africa," and travelled widely through Africa interviewing leading African statesmen.

Walton received his Bachelor's degree from Brown University in 1951 and his Master's from Columbia Graduate School of Journalism in 1954. He is 56 years old and lives in Warwick, Rhode Island.

Local contact for the Citizens Party is Ellen Christensen, 145 North 77th Street, Seattle 98103.

Sonia Johnson and Dick Walton are endorsed by the Socialist Party of Washington.



President and Vice-President



**Lyndon H.
LaROUCHE**
Independent



**Billy M.
DAVIS**
Independent

Lyndon H. LaRouche, Jr., an American System economist, is an independent Democratic candidate for the office of the President of the United States. He was a candidate for the 1980 U.S. presidential nomination of the Democratic Party, and is chairman emeritus of the

Advisory Board of the National Democratic Policy Committee. He is also a founder and contributing editor of the international political intelligence newsweekly, the Executive Intelligence Review. Because of his monetary-reform proposals and his total opposition to neo-Malthusian doctrines, which he has described as "genocidal," he has become a target of bitter controversy.

Mr. LaRouche's running mate for the office of Vice President is Billy Davis. Mr. Davis is a family farmer from Laurel, Mississippi. A prominent farm leader, he received a law degree in 1966 and has taught history in junior high school.

The President of the United States must master these five deadly crises: 1. The Soviet drive to establish world domination by 1988; 2. A world-wide financial collapse; 3. A continuing collapse of agro-industrial output; 4. The eruption of a famine-level world-wide food shortage during 1985; 5. The accelerating erosion of those distinctive features of Judeo-Christian culture upon which Western Civilization is based. No solution for any of these crises can be found except as progress is accomplished in mastering all five. The LaRouche-Davis ticket proposes that we meet these crises with the following program:

1. Ending the strategic crisis: For the past seven years, Mr. LaRouche has promoted the crash development of defensive directed-energy beam weapons systems — the Strategic Defense Initiative. These defensive systems would be capable of destroying nuclear-armed missiles.

2. Preventing a financial crisis: LaRouche and Davis are calling for the return of our nation's credit-generating powers to the Congress, as specified in Article I, Sections 8 and 9 of the Constitution. This means federalizing the Federal Reserve System to create the Third National Bank of the United States.

This national bank would issue gold-reserve denominated currency notes through the private banking system, to be lent at interest rates of 2-4% to finance production of industrial goods and agricultural commodities.

LaRouche and Davis propose that the U.S. disassociate itself from the International Monetary Fund and aid in the reorganization of the unpayable debts of the developing sector through the creation of long-term, low-interest, gold-backed bonds. They characterize the IMF's austerity policies in the developing sector as illegal violations of national sovereignty and genocidal in intent and effect.

3. Ending the economic and agricultural crises: A massive infusion of low-interest credit to U.S. industry and agriculture through the reorganized banking system. If the debts of the developing sector are relieved, a huge market for American exports can be created overseas immediately, and unemployment can be ended here at home. Development of the U.S. and its neighbors, should proceed through investment in broad-scale Great Projects such as the second Panama Canal.

President and Vice-President



**Gus
HALL**
Communist



**Angela
DAVIS**
Communist

Vote for people before profits. Worried, angry about Reagan? You needn't feel powerless. We are the majority, and together we can turn our concern and anger into movements and actions that can turn our country around. There *are* solutions: A massive federal program to rebuild our cities. Enact a program of full employment; extend benefits for the *full* period of unemployment. In the public good, take over and manage industries like steel, machine building, auto, rubber, the energy complex of oil, coal and nuclear power. Establish a six-hour day with no cut in pay. Roll back and cap all prices, rents and interest rates. Eliminate taxes on family incomes under \$30,000 a year. Make all racist and anti-Semitic practices criminal offenses. Establish verifiable affirmative action programs, with quotas, in every area of life. Enact no-interest government loans, free crop insurance and 100% parity for small family-size farms and bring an immediate halt to all foreclosures on family farms. Reverse and replace social security cuts, increase payments 25%; end all federal, state and city taxes on social security. Pass an emergency National Youth Act providing jobs, education and training for all youth. Pass the ERA and a law for equal pay for comparable work, and enact a federally funded child care program. Enact a \$50 billion federal program to clean up pollution, and make the corporate polluters foot the bill. Pass a National Health Act. Enforce the Voting Rights Act, eliminate the double primary. Strengthen and enforce OSHA. Make *all* working people eligible for all social services.

Where will the money come from? Make the rich, the corporations and banks return the \$750 billion tax swindle Reagan gave them since taking office. Close the tax loopholes of the rich and end the \$120 billion interest payments on the national debt. End the nuclear madness of Reagan's policy of war and confrontation, save trillions *for people's needs*. The turnaround platform of Gus Hall, a founding organizer of the steelworkers' union, and Angela Davis, leading Afro-American activist and scholar, shows the way to victory over Reaganism and corporate superprofits — the fighting unity of the people. Gus Hall and Angela Davis hold that only a socialist United States can *finally* eliminate capitalism's war, poverty and racism. But we don't have to wait for socialism to curb the warmakers and monopolists — we must do it *now*. A vote for Hall and Davis is the vote with the most clout. Their program is a living answer to the dangerously insane anti-communism that Reagan has used to justify all his foreign and domestic policies. It is a vote to safeguard peace and turn our country around from policies of war, poverty and racism. *Vote people before profits. Vote for Gus Hall and Angela Davis.*



President and Vice-President

Candidate did not
submit a photograph
for publication.

**Larry
HOLMES**
Workers World

Candidate did not
submit a photograph
for publication.

**Gloria
LaRIVA**
Workers World

Larry Holmes was raised in Harlem and lives in New York City. Holmes, a GI resister inside the Army during the Vietnam war, participated in the first official Vietnam veteran's group to Nicaragua last

year. In 1981, he was the Chairperson of a rally of 100,000 at the Pentagon against U.S. intervention in Central America.

Chicano activist Gloria LaRiva is a militant trade unionist and was a key leader in the 1983 Chicano Moratorium March in San Francisco. In 1982, she joined the Native occupation to keep California's only Native college open, and also helped build a march of 2,000 against the Nazis in Oroville, CA. Both Holmes and LaRiva supported the Rainbow Coalition and the Campaign for Jesse Jackson.

If you're for jobs or income for everyone, including youth, seniors, and the disabled, if you're for union rights, and an end to racism and inequality, if you're for no wars or interventions, if you're for cutting the Pentagon budget and expanding social services, if you're for full rights for women and no discrimination against lesbians and gays, then you're for Holmes and LaRiva.

Workers World Party stands for a socialist society, where the wealth is shared, not monopolized by a small clique of billionaires.

Workers World Party is for solidarity among all peoples and Nationalities. That means fighting racism, sexism, anti-semitism and discrimination.

Workers World Party is for building a unified movement against exploitation and union busting, against the bosses, bankers and military-industrial complex.

Workers World Party is for dismantling the military monster and living at peace with the world.

Make your vote count for what you want, not for Mondale's so-called "lesser evil."

The strongest vote against Reaganism is a vote for socialism and a multi-racial, struggle oriented working class party.

Holmes and LaRiva represent the interests of the poor and working people. But they are not campaigning to promise you anything, or like the Democrats and Republicans, to lie to you to get your vote. The most important part of their campaign is to remind you of what you know already — that the elections in this country never change anything.

Despite efforts by the government, the media and the candidates to convince you that you actually have a choice, there's not much difference between the Democrats and the Republicans. Big business runs and finances both the Democratic and Republican parties. Both have given bipartisan support to the cutbacks, to the biggest peacetime arms budget in history, and to the profit mad capitalist system that throws workers by the millions on the scrapheap.

Holmes and LaRiva reject this two-party trap. Workers and poor people need their own party, united in an on-going struggle to fundamentally transform society so that it serves their needs.

President and Vice-President



**Robert E.
RICHARDS**
Populist

Campaign Address:
2096 Calif Street
San Francisco, CA 94109
Telephone: (415) 775-5749



**Maureen K.
SALAMAN**
Populist

The newly organized Populist Party of the United States has nominated Bob Richards of Waco, Texas, winner of two Olympic gold medals and nationally known businessman and lecturer, as its presidential nominee, and Maureen Kennedy Salaman of San Francisco, California, president of the National Health Federation and renowned author and talk show moderator, as its vice presidential nominee.

These outstanding Americans bring to the voters of the United States an unequalled opportunity to change the course of history and bring to all the citizens an America-First administration whose policies will ensure more jobs, less taxation and more financial security than has been offered in the past fifty years.

Their populist platform consists of these five answers to critical issues facing the people of the United States at this time:

1. Repeal of the graduated income tax on individuals. The income tax is paid almost entirely by the middle class. The super rich pay very little of it. The personal income tax is not necessary to operate the government. In fact, the United States functioned well without a federal income tax for 125 years.

2. Abolition of the privately owned Federal Reserve system which manipulates interest rates to effectively stop home ownerships by young and old alike. Congress has surrendered this authority to the Federal Reserve and we have ever higher interest rates, inflation, and depression at the whim of the international bankers.

3. Enactment of tariff laws which will rebuild American industry and help maintain a high standard of living of our working men and women. There are two ways to cut the floor out from under the standard of living of American working men and women. One is to import cheap foreign labor to take American jobs; the other is to import the slave-wage product of foreign toil.

4. Restriction of immigration to protect the jobs of American workers. There are now an estimated 15 million illegal aliens in the U.S.

5. Restoration of the America-First tradition of noninvolvement in useless foreign wars which have cost many thousands of American lives and billions of tax dollars.

You can help accomplish these goals by casting your vote for the slate of electors in your state pledged to Bob Richards, President and Maureen Kennedy Salaman for Vice President.



United States Representative Fourth Congressional District



Sid MORRISON Republican

Campaign Address:
P.O. Box 105
Yakima, WA 98907
Telephone: (509) 575-1808

Congressman Sid Morrison is seeking a third term as Fourth District Representative. A 14-year veteran of the Washington State Legislature, Morrison brings experience and understanding to Congress.

During the past four years, Morrison has traveled from Washington, D.C. to Washington State at least twice each month to maintain a

working partnership with the people he represents. Three full-time district offices help folks when government fails, and a toll-free telephone line makes it easier for them to stay in touch. In addition to frequent public meetings, he's brought people together to discuss education, senior citizen health care and small businesses.

Sid Morrison has the courage to tackle the tough issues, like immigration, rather than criticizing from the sidelines. He played a key role in the negotiations which created Washington wilderness. His ideas for better use of irrigation water have become law, while rebuilding the fish resource. Morrison has worked hard to ensure low-cost energy.

An elected leader of his Republican colleagues, Morrison's committee assignments include the subjects of agriculture, forests, energy, budgets, and world hunger.

Congress has cut the rate of growth of government spending by one third. Inflation has been brought down to under four percent for basic needs and kept there for over two years. This drop in inflation, an increase in the Gross National Product and tax reductions for individual Americans all lead toward a revitalized economy and jobs. These are goals Sid Morrison believes in and is working for.

Morrison was raised and lives in the Yakima Valley. He shares the family farm with his wife Marcella their four children and three grandchildren. A community and church leader, Sid Morrison has been involved because he cares about people. And, because he cares, he wants to continue to work on behalf of the folks of Central Washington.

flashy, but unsustainable, recovery. The workers, working farmers and small business and professional people of both sexes and all ethnic backgrounds provide the productive base of our nation. I will work to strengthen that foundation.

I will seek to reduce the reckless military spending of the Reagan administration which has weakened, not strengthened, our national security. Our enormous nuclear arsenal cannot be used without destroying ourselves. I support a bilateral, verifiable nuclear freeze and the demilitarization of our foreign policy. We need talks, not troops in Central America; realism, not rhetoric in dealing with the Soviet Union.

The U.S. may be feared around the world, but it will not be respected until it uses its power to guide the world back from the brink of a nuclear holocaust.

I will work to lessen the burden on low and middle-income people of the huge deficit, high interest rates and inequitable taxes. I advocate a federal employment policy to rebuild our deteriorating infrastructure and a training policy to open the possibilities inherent in new technology.

I will strive for passage of the ERA. I will support comparable worth and firm and fair enforcement of voting rights and affirmative action. I am for federal protection of labor's right to organize and bargain collectively.

Prosperity will not trickle down from the top. Peace will not fall from a Star Wars program. Both have to be built from the bottom up. Vote for a builder. Vote for Mark Epperson.



Mark EPPERSON Democrat

If elected, I will represent the very special interests of the people of the Fourth District and the American people as a whole for a peaceful world and a sound economy.

Rising profits on the one hand, continued unemployment and a growing sector of our people in poverty on the other have given us a

United States Representative

Fifth Congressional District



**Jack
HEBNER**
Republican

Campaign Address:
Hebner for Congress
P.O. Box 1220
Spokane, WA 99210
Telephone: (509) 455-4250

Jack Hebner was born in the northeastern corner of the 5th District and educated in its schools. He has a B.A. from Washington State University in Communications; an M.A. from the same school in

Speech; and he graduated from Gonzaga Law School in Spokane.

Hebner is a director of KSPS, Public Television in Spokane. He is a Rotarian. He has done considerable community service work with the Spokane Park Board, the Historic Landmarks Commission and the Eastern Washington Area Agency on Aging. Hebner was elected to the Spokane City Council in 1981. Hebner campaigned against the tax vote and big spending. Following election, Hebner became the City Council Governmental Liaison to the Legislature in Olympia and the Congress. As Chairman of the Spokane Regional Planning Conference, he slashed a \$400,000 budget by one-third with no reduction in service to the community. He is Chairman of the Inland Empire Regional Conference which deals with economic development and interstate problems involving Eastern Washington and Northern Idaho.

Jack was Vice President of RHW Broadcasting, Inc., which owns and operates small radio stations in the Pacific Northwest. Previously, he served as Marketing Director of American Sign and Indicator Corporation. Jack has experience from having worked as a reporter and news director in broadcasting. He was Communications Director for the Spokane Chamber of Commerce, an assistant professor of communications for five years and as a manager on the Spokane City Manager's staff.

Hebner favors preserving the 1981 income tax cut, the Balanced Budget Amendment to the Constitution, an adequate, affordable national defense, living up to our commitment to the Social Security System and a program for agriculture that works.



**Thomas S.
FOLEY**
Democrat

Campaign Address:
Committee to Re-elect
Tom Foley
Box 2121
Spokane, WA 99210
Telephone: (509) 838-6400

Tom Foley works effectively to get things done for Eastern Washington and for America. He serves as Majority Whip, the third ranking leadership post in the House.

First elected in 1964, Foley served earlier in other leadership positions, including Majority Caucus Chairman and Agriculture Committee Chairman. He continues as a key farm policy leader, serving as Vice Chairman of the Agriculture Committee and Chairman of the powerful Wheat Subcommittee, where he concentrates on efforts to expand agriculture's role in the economy and on increasing exports.

Tom Foley believes the highest priority must be given in the next Congress to a truly bipartisan effort to reduce the deficit and strengthen America's economy. He said this must be achieved without sacrificing the nation's security or essential programs such as Social Security and health care for senior citizens.

Tom Foley always has supported a strong military defense, but he has been sharply critical of inefficiency and waste in military procurement as well as civilian programs. He has expressed deep concern about the lack of progress in arms control.

Tom Foley is a lifelong resident of Spokane and his family has deep roots in Eastern Washington. His grandfather homesteaded there before statehood. He is the son of retired Superior Court Judge and Mrs. Ralph E. Foley of Spokane. He is married to the former Heather Strachan.

After graduation from the University of Washington and its School of Law, he served as Deputy Spokane County Prosecutor and an Assistant Washington State Attorney General.

Foley was a close associate of the late Senator Henry M. Jackson and served on his staff as a special counsel from 1961 to 1964.



Governor



**John
SPELLMAN**
Republican

Good times are back from a bad recession. But not for all. I want to finish the job I began four years ago — putting Washington back to work.

We are moving strongly out of the recession with pioneering programs. The state's first Housing Finance Commission. The first industrial development bonds. The first tourism effort. The first wine marketing programs. The first centers for international marketing of forest products and agriculture. The first Tokyo office, and our first formal relationship with The People's Republic of China. The first Office of Women and Minority Business Enterprises.

We did it all for jobs today, and for prosperity tomorrow. We've laid the foundations for a generation of prosperity.

We are on course. We have made good progress. As a result of quiet and competent leadership, business is optimistic and 120,000 more people are working today than when I took office. But . . .

But there are still too many unemployed. It is my belief that the best welfare is a good job. We need more good jobs in forest products and fisheries especially, but across our state.

Agriculture and small business deserve more respect. They are the bedrock of our economy. The sales tax and B & O tax rates are too high. I plan to cut them to create jobs.

We must grow to create prosperity. But we must grow with grace, loving and protecting this wonderful place where many of us were born and where all our children will grow up.

Our children's future is also tied to education. It is fundamental to their and our economic future. I will propose my second Excellence in Education Act this January.

I ask for your vote on November 6. I try to be a progressive and an honorable man, a good Governor.



Booth GARDNER Democrat

Campaign Address:
People for Gardner
401 Pontius Avenue N.
Seattle, WA 98109
Telephone: (206) 223-1984

I can get our government working again, and our people back to work.

John Spellman has not done the job. He promised us no new taxes, and then signed into law the most regressive tax of all, a tax on food. He has done little to encourage economic development, yet suddenly, he is telling us that that's what he'd work for. He has given lip-service to protecting our environment.

Every month, there is a new horror story about how Spellman appointees have misspent our hard-earned tax dollars. Instead of using our taxes well, he has given us a top-heavy management.

I've done better.

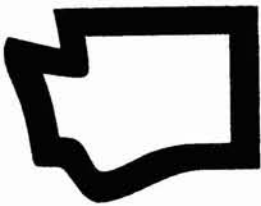
At a time when Pierce County was almost \$5 million in debt, I made government lean and efficient by streamlining procedures, weeding out duplication, training managers to perform better, freezing the salaries of the highest-paid officials, and restricting the use of county cars. Without raising taxes, we balanced the budget.

But this campaign is not about the past. It is about the future.

As Governor, I will help create new jobs by broadening our economic base. I've proposed a detailed eight-point plan to create new jobs, but the heart of the plan is this: We need a Governor who can get businesses to listen, who can talk its language, who can persuade new businesses to locate here and encourage "home-grown" new and innovative companies.

I believe that new jobs for Washington and protecting our beautiful state are not incompatible. Maintaining our good environment is just good economics, and I will take the necessary action to clean up Puget Sound, protect our inland waters, clean up toxic wastes and restore our fisheries.

A key to creating new jobs is maintaining and improving the quality of our schools. The Governor must be an activist for education.



Lieutenant Governor



**Eleanor
LEE
Republican**

Campaign Address:
P.O. Box 1984
Seahurst, WA 98062
Telephone: (206) 246-8854

Since childhood, Eleanor Lee has been chosen by people to serve as their leader. Nearly 30 groups have asked her to serve as their chief presiding officer. She is also a successful businesswoman. Ten years ago, she was elected a State Representative and then State Senator.

Senator Eleanor Lee's fairness, intelligence and ability earned her leadership roles in the Legislature and the most powerful committee assignment available to the minority party — ranking member of the Senate Ways and Means Committee. Last session, she was the most successful Senate Republican lawmaker.

Senator Eleanor Lee was asked by her colleagues to run for Lieutenant Governor. They chose someone who could ably fulfill the requirements of the office — substituting for the governor, presiding over the Senate, serving on required committees and performing ombudsman duties.

However, the vast potential of the office has not been fully utilized for 50 years. Eleanor Lee says, "The office has been primarily ceremonial long enough. As the official next in line to the governor, the lieutenant governor should help solve this state's problems, as done in other states. It can be done with existing powers and budget, but it requires an experienced new person as lieutenant governor."



**John A.
CHERBERG
Democrat**

Campaign Address:
P.O. Box 9932
Seattle, WA 98109
Telephone: (206) 283-1281

During his 28 years in public office, John Cherberg has earned a reputation for outstanding integrity, ability, accomplishment, fairness and firmness.

Cherberg has acquired invaluable knowledge about state government as President of the Senate, Acting Governor 1,336 days, statutory member of the State Finance Committee, State Capitol Committee, Health Care Facilities Authority, Data Processing Authority and seven other committees.

Cherberg has used his knowledge wisely in his role as "ombudsman" for thousands of citizens who turned to him for help in solving their problems in workmen's compensation, industrial insurance, pensions, public assistance and in cutting "red tape."

The people whose business it is to know and report on state government have singled out John for praise:

"Cherberg's gavel has saved billions of dollars for the state." Jack Pyle, Tacoma News Tribune; "Cherberg is an official of impeccable integrity with broad experience in state government." Seattle Times; "Few are better informed on the inner workings of state government." Yakima Herald-Republic; "Cherberg earned and has maintained a reputation for fairness and impartiality as the senate's presiding officer." Adele Ferguson, Bremerton Sun; "A conservative with a heart." Washington Teamster.

John Cherberg's record truly merits your vote for his re-election as Lieutenant Governor.

Secretary of State



**Ralph
MUNRO**
Republican

Campaign Address:
Citizens for Ralph Munro
907 Western Avenue
Seattle, WA 98104
Telephone: (206) 467-8683

Ralph Munro has demonstrated leadership and creativity as Secretary of State over the past four years. Munro introduced legislation to end "exit polling," which enabled TV networks to project election results from interviews conducted *inside* polling places.

Munro has made tremendous improvements to coordinate the work of his office with the Business License Center, thereby improving the handling of corporate and non-profit registrations and the tens of thousands of annual renewals.

Munro has introduced legislation dealing with clearer ballot titles and accurate reporting of campaign contributions, among many others. The voters pamphlet has been distributed earlier, and Braille and tape versions have provided complete voter information to handicapped people for the first time.

"One of our greatest accomplishments," says Munro, "is that we have proven that voting district boundaries can be drawn by an independent redistricting commission instead of being a recurrent political football in the Legislature. The constitutional amendment approved by voters is the most significant change in Washington's political system in the past four years."

Re-electing Ralph Munro means four more years of responsible, hardworking leadership. Endorsements by newspapers, business and labor organizations across Washington confirm the importance of returning Ralph Munro as our Secretary of State.



**John
McKEE**
Democrat

John McKee, age 51, has lived in the state of Washington his entire life except for 6 years active duty in United States Army. He and his wife Margret have 5 children: Pat, Mary, Elizabeth, Therese and Jody. He attended Public and Private Schools. Has been employed 23 years as Public Affairs Consultant to various organizations. U.S. Army 6 years, Hon. Discharge.

Previous Political Experience includes various background as a consultant on state and local affairs. Has appeared before numerous state and county commissions, as well as representing numerous groups.

He is affiliated as a member in good standing in: Eagles, Moose Lodge, American Legion, VFW, various local civic and community clubs.

His platform and aims for Office are: The Secretary of State Office is a service oriented office and should be open to all citizens of the State during normal business hours.

The present incumbent closes the office between 12-1 o'clock and does not allow calls to some divisions after 11:30 in the morning, making it very difficult for some residents of the State to get information. This should be changed!!



State Treasurer



William B. (Bill) PILKEY Republican

Campaign Address:
P.O. Box 5666
Olympia, WA 98503
Telephone: (206) 754-9704

Twenty years in office are too long for anyone. If elected, I would serve twelve years.

The current treasurer gets most of his campaign money from the big city banks — about half from out-of-state. This is a conflict of

interest. We want a treasurer who represents us, not big banks. I will take no money from out-of-state banks.

The treasurer's long-term investment record was so poor the legislature took this job away from him. He caused state government to lose its credit rating. This cost taxpayers \$200 million. The treasurer let state government borrow from pension funds to solve his cash flow problems. This cost us \$200 million. He didn't warn us about WPPSS.

I fought for fiscal responsibility as a government watchdog for 18 years. As Washington Research Council former president and legislative financial consultant, I have a proven record of concern for our state.

We must stop passing the buck for uncontrolled government spending, taxes and pension costs to our children. I have the experience to get the job done.

I will work to: improve state's credit rating, require legislature to fund pensions, improve investment return on workers' compensation trust funds, fight higher taxes, encourage long-range economic planning.



Robert S. O'BRIEN Democrat

Campaign Address:
P.O. Box 1963
Olympia, WA 98507

As a public treasurer for many years, Robert S. O'Brien has established an unblemished record of integrity. Nearly \$50 million passes through the State Treasurer's Office daily, and these funds have been

handled wisely and well. In addition, O'Brien's record of investing the state's funds earned the taxpayers a record \$370 million over the past five years alone.

Treasurer O'Brien believes in investing first within our own state's financial community. This constitutes a major effort to provide funds to stimulate our state's economy. His success in managing investment returns enables the state to stretch its revenue further and, ultimately, to ask that much less from taxpayers.

O'Brien's record of success in investing state dollars, promoting concepts of efficiency, and dealing with the investment community has earned him an outstanding reputation in both state and national financial communities. Treasury officials in more than two dozen states have adopted O'Brien's policies and techniques, ensuring high interest earnings while guaranteeing integrity and safety of state funds.

O'Brien has served as President of the Washington County Treasurers' Association and the Association of Elected County Officials, and as President of the National Association of State Auditors, Comptrollers and Treasurers, and the Western State Treasurers' Association.



Mack J. T. BARNETTE Libertarian

Campaign Address:
P.O. Box 4097
Bellingham, WA 98227
Telephone: (206) 733-9031
(206) 522-2988

Mack Barnette is the only candidate with the necessary professional training and experience for reliable implementing of budgetary restraint.

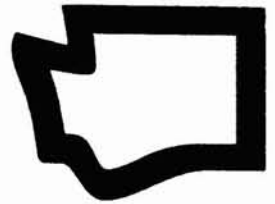
Mack Barnette, a Certified Public Accountant since 1964, has 11 years comptroller experience in commercial banking, 5 years treasury work in insurance, 11 years comptroller/treasurer/director experience in consumer finance. Mack now owns and manages his accounting firm, established for 8 years. Mack Barnette is the only Certified Public Accountant in the race and has over 30 years experience in finance, accounting, and comptrolling.

Barnette's qualifications are emphasized, because the State Treasurer's office is in dire need of state-of-the-art monitoring of a skilled, fiscally disciplining professional. He sides with irate taxpayers in not accepting the incumbent's association with the WPPSS bonds debacle, a faltering State Treasury, and runaway budgets.

Mack Barnette is not only capable of instituting sound financial management of the State Treasury, but also he has the skills to do the job. He is the only candidate with *both* a solid commitment to taxpayers' relief and the technical accounting-comptrolling experience.

For professional integrity you can trust, *elect Barnette.*

State Auditor



**Bob
KEENE**
Republican

Bob Keene has worked nineteen years in accounting. As a Certified Public Accountant, he commands a working knowledge of business and public finance, with two degrees in accounting from Washington State University. Bob was awarded the *bronze star* for excellence in auditing and accounting in Vietnam.

The 1980's have been an economic disaster for Washington State which demands that the State Auditor take an active role as our first line of defense against waste, fraud, and abuse.

Since 1980, our electric bills have increased 250%. WPPSS spent approximately \$10 billion, yet only one nuclear power plant is operating. WNP-2 cost 672% of original estimates, and you and I are footing the bill. The State Auditor has the responsibility to refer the abuse of our money to the Attorney General, but the incumbent has failed. In 1979 the State Auditor stated that the bondholders of WNP-4 and 5 had security, but the security was dismissed in court for being unconstitutional.

As State Auditor, Bob Keene will work to *save Washington from bankruptcy*. He will put strict controls on state funds. *Asotin, Benton, and Kitsap Counties* have had money missing: Bob will find it. Bob will work to restore Washington's good credit rating. *It's time for a change!!!*



**Robert V. (Bob)
GRAHAM**
Democrat

Campaign Address:
Graham for State
Auditor Committee
P.O. Box 1955
Olympia, WA 98507
Telephone: (206) 491-2253

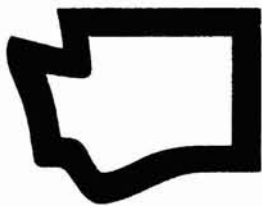
Bob Graham's outstanding service as auditor provides Washington voters a window into government operations. His professional, evenhanded administration of the office has been recognized by the press:

"The office monitors the spending of all state and local offices, and Graham is known for calling things as he sees them, regardless of whether the office being audited is held by a Democrat or Republican." (Robert Cummings, Olympia Correspondent)

His broad experience in the governmental finance field has earned him the rating "Certified Internal Auditor" and national recognition by his peers. The U.S. General Accounting Office has declared the Washington State Auditor's office among the top ten in the nation. His work in developing accounting systems won Mr. Graham an appointment to the National Council on Governmental Accounting and he was twice elected as chairman of that prestigious body.

Beyond technical expertise, the State Auditor must have leadership ability. The National Association of Government Accountants awarded Bob Graham their "Distinguished Leadership Award" and he has been nominated by a federal agency for yet another national leadership award.

Bob's dedicated public service career warrants his re-election, in recognition of "a record of outstanding service" to the citizens of Washington.



Attorney General



Kenneth O. EIKENBERRY Republican

Campaign Address:
Re-Elect Ken Eikenberry
Box 24591 T/A
Seattle, WA 98124
Telephone: (206) 587-0777

Attorney General Ken Eikenberry's record is impressive and is testimony to his leadership, independence, professionalism and integrity.

Vigorous, effective enforcement of Consumer Protection laws produced over \$13,000,000 for Washington's people and public offices in three years, a 300% increase over the previous three years. Ken promoted important consumer legislation and won the resources to champion the consumer's interest in power and telephone rates.

Under Ken Eikenberry, the Attorney General's Office continues to maintain its independence, fairness, professionalism, and non-political approach to the law. "What's right, what is fair, and what is the law," is Ken's officewide goal.

Ken Eikenberry made history by winning authority to actively investigate and prosecute crimes. This authority, coupled with Ken's 25 years of legal experience, including having been an FBI agent and King County Deputy Prosecutor, gives Ken Eikenberry and the Attorney General's Office the tools to substantially help law enforcement throughout the state.

The victims of crime must be protected. Ken Eikenberry continues to lead the effort for victims rights, particularly in domestic violence and child abuse cases.

Ken Eikenberry has done a great job as AG. That's why former Attorney General, Senator Slade Gorton, enthusiastically endorses Ken's re-election.



Phil TALMADGE Democrat

Campaign Address:
The Phil Talmadge Campaign
P.O. Box 248
Seattle, WA 98111
Telephone: (206) 682-2424

Phil Talmadge knows that we depend on the Attorney General to protect the quality of life we enjoy in Washington.

When companies are caught dumping hazardous wastes, we want the Attorney General to enforce our environmental laws. When contractors rip us off on major public projects like WPPSS, we want the Attorney General to prosecute them.

Fighting crime, protecting consumers, representing ratepayers, enforcing laws against discrimination, keeping the workplace safe — these are only a few of the critical responsibilities of the Attorney General.

Phil Talmadge's record of accomplishment as a lawyer and legislator makes him uniquely qualified to be Attorney General.

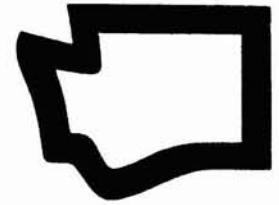
A tireless and effective State Senator, Phil has sponsored 80 bills which have been enacted into law — a truly remarkable achievement.

The issues he has worked on are wide-ranging: Puget Sound water quality, the right of workers and communities to know about exposure to dangerous, toxic materials, and criminal sentencing reform, to name a few.

Phil Talmadge is a partner in a large Seattle law firm. He has successfully argued numerous cases for individuals and businesses before state and federal appellate courts.

Phil and his wife Darlene have four children and are lifelong residents of West Seattle.

Commissioner of Public Lands



**Brian
BOYLE**
Republican

Campaign Address:
100 Colman Building
811 First Avenue
Seattle, WA 98104
Telephone: (206) 343-0500

Incumbent Land Commissioner Brian Boyle delivered on his 1980 promise to bring new leadership to the Department of Natural Resources.

Boyle, 43, said his background as a former Cowlitz County Commissioner and metals industry engineer and manager helped him direct state land management to serve the public interest.

"Two of my most important accomplishments were to make state land management more responsive to the public and to protect public land and water from environmental damage," Boyle said.

Boyle has diversified state land investments in oil and gas, agriculture and urban properties to assure more jobs, property tax relief, and income for schools, universities and counties.

In the next four years, Boyle's public and private sector experience is critical to protect the state's natural resources while producing land income so higher taxes will not be needed to build and run schools in the future.

The state also must help our timber and wood products industry. "This is a critical crossroad for our most important industry's recovery," he said, "and it needs continuity and leadership."

Boyle's policies will ensure future generations will gain the same benefits of recreation, jobs, environment and income that we have received from state lands.



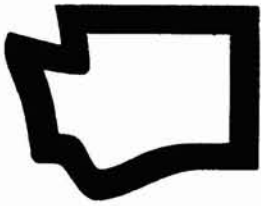
**William L.
JENNINGS**
Independent

Campaign Address:
2031 Eastlake Avenue E
Seattle, WA 98102
Telephone: (206) 322-0006

I am running as an Independent for Land Commissioner as part of a slate of candidates headed up by Lyndon H. LaRouche, Jr., Independent, U.S. presidential candidate.

The state land revenues are an economic victim of Paul Adolph Volcker's usuriously high interest rates. The result of this policy has been a wave of bankruptcies and layoffs in timber, farming, mining, transportation and industry. There are no meaningful local correctives that will see us achieve more than a slowdown of economic collapse. Therefore, any candidate for office who does not address the national and international origins of these problems is only accepting the "which arm or leg next" economics of Volcker and his controllers in international banking. My tenure in office would use the institution of the Washington State Department of Natural Resources as a vehicle for demanding a policy for 2-4% interest rate loans to be issued solely for rebuilding America's productive powers.

It is a great irony that revenues generated from our state lands fund education and simultaneously grow marijuana which damages our students' brain functions. The capabilities of the Landsat satellite to spot even small plots of marijuana would be used to assure the end of this practice.



Commissioner of Public Lands

NOTE: At the time of publication, the unofficial vote totals for Gene Chase and Gene Wiegman were too close to determine the democratic nominee for the office of Commissioner of Public Lands. Therefore, both candidates' statements and photographs appear below, although only the winner of the primary, as determined by the official returns, will appear on your ballot.



**Gene
WIEGMAN**
Democrat

Almost without notice by the public, the number two industry in Washington State — *the forest products industry* — is rapidly being devastated by a combination of factors, i.e., skyrocketing industrial insurance rates, huge contractual obligations incurred in 1978-79 & 80 to cut public timber, Canadian imports, and rail freight rate increases.

Dozens of smaller timber related companies have either closed down, taken bankruptcy, or drastically cut back. Hundreds of employees have already lost their jobs, *and thousands of layoffs are pending.*

The impact of the crisis will have a tragic effect on the funding of school construction, and those county services dependent on monies from the Trust Fund.

Immediate solutions must be forthcoming if the remaining small and middle sized wood products companies are to survive! The problem is monumental and can only be solved by coordinated efforts of industry, labor, consumers, and government. The Lands Commissioner must take the *leadership* responsibility and "in-action" replaced by "action"! The time for promises, talking, and stalling ran out two years ago!

As former Commissioner of Employment Security, and before that as the President of Pacific Lutheran University, Gene Wiegman, 54, has a proven record as an administrator, leader, and chief executive officer.



**Gene L.
CHASE**
Democrat

Campaign Address:
Chase for Commissioner
Committee
P.O. Box 158
Lakewood, WA 98259
Telephone: (206) 435-4060

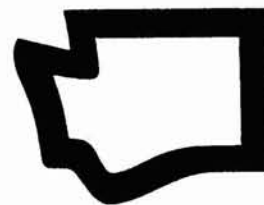
My major concern is the current mismanagement of the Common School Trust Fund and the cash flow problems that are resulting from the policies of the current commissioner

In 1980, the School Trust Fund received over \$77 million; in 1983, the fund received only \$35 million. Most of the reduction in funds is related to the defaults on state timber sales augmented by inaction by the Commissioner of Public Lands.

Having been an Arlington School Board Director for the last six years, serving as a Legislative Representative for the Washington State School Director's Association, and having 20 years experience in the forest products industry, including six years with the Department of Natural Resources in forest engineering and commercial land management, qualifies me to take leadership in the needs of the trust lands which is one of the main responsibilities of the Commissioner.

Activities include: Washington State School Director's Legislative Representative, 1978-present; Arlington School Board, President 1979-1982, member 1978-present; Mt. Baker-Snoqualmie Timber Committee, Chairman, 1980-1983; Snohomish County Fire District, Commissioner, Chairman 1978-1983; Industrial Forestry — Department of Natural Resources, member 1975-present; North Snohomish County Rotary, member 1980-1983; Cascade Hospital Advisory Board, 1979-present.

Insurance Commissioner



**Richard G. (Dick)
MARQUARDT**
Republican

Campaign Address:
P.O. Box 4175
Tumwater, WA 98501

Every year over 135,000 people contact my office seeking information and help with their insurance problems.

Several thousand others have attended our *free* insurance information clinics held mostly in shopping malls all over the state, or have been aided by our volunteer Senior Health Insurance Benefits Advisors (SHIBA) started by my office and now recognized nationally. We also regulate and audit the 1300 insurance companies doing business in the state to make sure they are solvent and able to pay any claims you may have. We test and license the 23,000 agents and brokers selling insurance here and collect approximately \$60 million per year in fees and taxes. This money goes directly into the state's general fund to help defray the cost of running the state. In addition, as State Fire Marshal, my office has two major responsibilities: 1. inspection of hotels, nursing homes, hospitals, day care centers, etc., for safety purposes and 2. conducting arson investigation.

Our staff is committed to helping people with their insurance problems. There is much yet to be done, particularly in the areas of insisting that insurance policies become more readable and in keeping health care costs down. I ask for your continued support.



**James E. (Jim)
HOFFMAN**
Democrat

Consumers of Washington are entitled to a fresh and vigorous Insurance Commissioner who is sensitive and responsive to the needs of its citizens.

James Hoffman is the superior candidate needed to resolve consumer issues and others plaguing an insurance-confused public. His campaign slogan is "People Are My Priority" and he has "experience . . . where it counts."

As a career employee for nearly 19 years with the State Insurance Commissioners' office he served with Commissioners, William Sullivan, Lee Kueckelhan, Karl Herrmann, and incumbent Dick Marquardt. A veteran insurance investigator, he worked as a Trust Fund Examiner on Hospital/Medical/Surgical programs and Pension/Profit Sharing plans. James was a Claims Analyst Deputy in both Seattle and Spokane branch offices. Later as an Insurance Company Examiner, he investigated insurance operations both within and outside the state. He also served as the insurance Commissioner's Personal Examiner and Trouble Shooter. He has been an outspoken Consumer Advocate (Democrat) during his nearly 19 year span with the State Insurance Commissioners' office. Since leaving the department *involuntarily*, he has worked constantly to improve consumer relations for policyholders both within and outside the State of Washington.



Superintendent of Public Instruction



**Shirley
GALLOWAY**
Nonpartisan

Shirley Galloway has devoted 24 years to education, children and youth. She is admired for her convictions, respected for her courage and trustworthy as a leader. She always provides strong leadership.

Served in the Legislature for 6 years (vice-chair and current chair of House Education Committee; co-chair Pupil Transportation and Child Abuse Committees; 4 years on Revenue Committee; Actuary Committee). She is on State Council to Prevent Child Abuse.

Galloway knows how to get things done through planning, setting measurable goals and working with groups in an even-handed manner. Her pro-active approach to problem solving avoids crisis and provides stability. Her knowledge and skills established major community events; curriculum council; aided in school district dispute settlements; consultant on remedial education; started youth agency cooperative programs; mentor to gifted children; headed efforts to improve reading programs; church education committee chair, ecumenical youth organizer.

She and her husband Wayne have raised 5 children. Galloway went back to school earning an A.A. & S., Clark College, 1978; B.A., The Evergreen State College, 1980; school finance training, WSU; extensive training in negotiations and dispute settlement, American University and American Arbitration Association.

Galloway has strong convictions that the student's educational success must be top priority in all decisions regarding public education.



**Frank (Buster)
BROUILLET**
Nonpartisan

Campaign Address:
Re-Elect Brouillet
Citizens Committee
217 9th Avenue North
Seattle, WA 98104
Telephone: (206) 682-6086

Dr. Frank "Buster" Brouillet, incumbent Superintendent of Public Instruction, is the state's leading advocate for school quality. He has pushed for increased state funding for basic education. During his tenure state funding has been increased from under 50% to 78% of local school district budgets.

Brouillet has been an advocate of school excellence. Graduation requirements have been raised twice since he took office.

Buster has received national recognition as an advocate for children with special learning problems. Under his leadership vocational enrollments have doubled and new programs have been developed for bilingual, remedial, migrant, gifted and handicapped students.

Brouillet has been endorsed by the Washington Labor Council; AFL-CIO; the Federation of State Employees; and the Washington Education Association. Buster's work as a member of the state's Board of Natural Resources won him the Washington Environmental Council's Environmental Public Official of the Year Award. His work won him an honorary doctoral degree from Seattle University. His counterparts in the 50 states elected him the president of their nationwide council last November.

State Supreme Court

Position 1



**Dale M.
GREEN**
Nonpartisan

Campaign Address:
Phelps Gose,
Treasurer
E. 220 Wellesley
Spokane, WA 99207
Telephone: (509) 487-2774

Experienced Appellate Judge — only candidate with Appellate Judge experience, Judge Green has served 15 years on the Court of Appeals, Division III, twice as Chief Judge. He needs no on-the-job training. *Experienced lawyer* — 19 years private and public law practice. A skilled trial lawyer, his practice included the entire spectrum of law. He knows the impact of appellate decisions on lawyers, clients, and law enforcement agencies. Judge Green brought the lawyer's viewpoint to the first Court of Appeals.

Experienced prosecutor — a former U.S. District Attorney, he knows the practicalities of criminal law. *Professor* — 6 years teaching Appellate Practice at Gonzaga Law School.

Practical and consistent judge — rules of law should be fair and practical — the kind people can live with. They should be consistently followed so lawyers can reasonably predict for their clients the consequences of given conduct. When law becomes impractical due to permanent change in society's needs, the law should change to meet those needs.

Involved — Chairman, Committee on Judicial Ethics; member, Pattern Jury Instruction Committee; Judicial Administration Section, American Bar Association; active church member; Rotarian; Mason. No. 1 in lawyer's poll.

Elect experience!



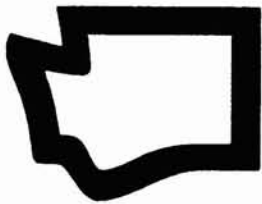
**William C.
GOODLOE**
Nonpartisan

Judge William C. Goodloe has been a Superior Court Judge for 12 years. He has the endorsement of over 60 of his fellow judges. As a practicing attorney, he has 24 years of extensive trial work in all courts.

Judge Goodloe served eight years as a Washington State Senator. He is a Navy veteran who served in combat in all theaters of World War II. He has been a faculty advisor for the National Judicial College and a consultant on several judicial publications. As a public service, he has given over 300 color-slide lectures on "Great Americans".

The Seattle Post Intelligencer said, "Goodloe states and pursues his own convictions without fear of repercussions. Goodloe is one of the most courageous and independent thinkers in the Legislature." (Comments while he served in the State Senate)

Judges cannot campaign on issues, seek party endorsements or make commitments which amount to prejudgments. A judge cannot rule until the evidence has come in and the law has been presented. Judge Goodloe will serve the people of the state of Washington with impartiality, integrity and ability.



State Supreme Court

Position 3



**Keith
CALLOW**
Nonpartisan

Experience: Judge of the Court of Appeals for 12 years; former Superior Court Judge; served as Deputy Prosecutor, law clerk for the Supreme Court and as Assistant Attorney General. Private law practice for 14 years. As Presiding Chief Judge of Court of Appeals, co-founded a national organization dedicated to the improvement of the administration of courts.

Recognition: The Brandeis-Judge of the Year-Award ("For Excellence Characterized by Reasoned Fairness and Judicial Leadership") from the Trial Lawyers Association; the Governor's Award ("For Outstanding Public Service in Accident Prevention") from Evergreen Safety Council and Thanks Badge (for service to Girl Scouting) from the Totem Girl Scout Council. Serves on Executive Board of the Boy Scouts. Bar poll overwhelmingly supports election.

Position: Experience and practical common sense are essential for a Supreme Court Justice, as is understanding the problems of each county. The criminal law should work so the guilty are convicted, the innocent acquitted, so that law enforcement officers can keep us safe by performing their work effectively and yet protect our freedom and privacy. Each person should be able to make the most of their abilities and each individual is entitled to respect.



**Edward
HEAVEY**
Nonpartisan

Edward Heavey has a distinguished record of service. As attorney, District Court and Superior Court Judge Pro Tempore, as well as Superior Court Arbitrator, he has acquired the breadth and depth of experience needed to be an outstanding Supreme Court Justice.

As Member of the King County Council, Heavey authored these major reforms: the first County Campaign Disclosure Ordinance, the first Code of Ethics of County Officials and Employees, the first Public Defender System in the state, and the first County-City Ombudsman program.

Heavey has served on the Washington State Bar Association's Civil Rights and Legislative Committees, and the Environmental Law and Real Property and Probate Section. He's been an Associate Member of the Urban Land Institute and member of the Environmental Defense Fund.

Edward Heavey is endorsed by the Washington Education Association, the Washington State Women's Political Caucus, Washington State Labor Council and Washington State Employees.

Edward Heavey says a Supreme Court Justice must not only comprehend legal complexities and render just decisions, but should work actively for judicial reform. "Our courts must be more concerned with protecting citizens, and less with protecting criminals. As State Supreme Court Justice, I'll be tough — but I'll also be fair."

State Representative Seventh Legislative District



P
O
S
I
T
I
O
N
1



**Steve
FUHRMAN**
Republican

Campaign Address:
Rt. 1
Kettle Falls, WA 99141
Telephone: (509) 738-6585

Steve Fuhrman, incumbent, is the most conservative, pro-taxpayer legislator in Olympia. He knows the legislature has wasted your tax dollars for too long.

Steve Fuhrman works to cut taxes and curtail state spending. Federal, state, and local government must get off the taxpayer's back. More jobs and a strong economy can only be achieved through the free-enterprise system, not through more government programs.

Steve Fuhrman seeks to cut state bureaucracy, to stop taxpayer funding of abortion, and to allow private competition with State Industrial Insurance.

Vote for Steve Fuhrman.



**David
WILSON**
Democrat

David Wilson: "I'm a retired Navy Captain. I've served my country 30 years as a medical officer, administrator, and surgeon including duty in World War II, Korea, and Vietnam. I live in Tonasket where my parents lived out their lives.

"I'm a fiscal conservative opposed to government interference in the economic sector. Untaxed dollars left in most people's hands create commerce which creates jobs. The government *does* have a responsibility to support effective, efficiently managed public safety efforts, education, and health services. As a legislator my opponent has voted against fulfilling basic governmental responsibilities. We deserve better. Vote Wilson."

P
O
S
I
T
I
O
N
2



**Pete
McCOMBS**
Republican

Campaign Address:
925 S. Miner
Colville, WA 99114
Telephone: (509) 684-2730

Pete McCombs is a problem solver who will work toward eliminating unnecessary spending and unfair tax burdens. He believes that we must ensure that economic growth is not stifled by needless governmental regulations and red tape.

Pete McCombs recognizes the need to provide our children with a quality education at a fair cost to the taxpayer. He also supports the right of citizens to keep and bear arms.

Pete and his wife Jeannine are long time area residents and have seven children. He has been active in scouting, the community and his church. Recently retired, he will work full time for us.



**Tom
BRISTOW**
Democrat

Campaign Address:
P.O. Box 634
Colville, WA 99114
Telephone: (509) 722-4313

Tom Bristow has the experience to get results in Olympia. He's a farmer with a strong work ethic, a two-term County Commissioner who understands the legislative process, and a board member for senior citizen, economic development, and public health organizations.

Tom is a no-nonsense leader who is approachable. He is a family man, former educator, church leader, and businessman.

Your next representative will work towards creating new jobs, improving the ability of local areas to provide quality education, and changing regulations that threaten small hospitals, small business, and local government. Tom Bristow has proven his ability.



State Representative Eighth Legislative District

P
O
S
I
T
I
O
N
1



**Ray
ISAACSON**
Republican

Campaign Address:
2106 Lee Boulevard
Richland, WA 99352
Telephone: (509) 946-5562

A six-year veteran, Ray is the ranking minority member of the House Energy and Utilities Committee; he also serves on Natural Resources and Local Government Committees.

A scientist-legislator, he has the working knowledge and expertise to deal rationally with complex technological issues.

Ray speaks authoritatively and acts decisively on issues concerning our area — the future of nuclear energy and agriculture. He has made the critical difference in legislative considerations; his voice of reason cuts through emotional rhetoric to focus on reasonable, safe solutions.

Ray leads the fight to increase jobs, cut taxes, and restore individual freedom and responsibility.



**Judy
GUSTAFSON**
Democrat

Judy Gustafson has spent most of her life here and now works as a purchasing agent for Rockwell Hanford, where she deals with local businesses.

Like us, Judy has seen the nuclear industry decline. Like us, she has seen our present legislators ignore the fiscal problems that chase away new job-producing businesses.

Judy knows that we don't have to accept high unemployment. She knows that economic diversification, cost control, and quality education are important.

Judy can work within a budget, she can work with people . . . and she knows that changes are long overdue in state government.

P
O
S
I
T
I
O
N
2



**Shirley
HANKINS**
Republican

Campaign Address:
2120 Duportail St., #8
Richland, WA 99352
Telephone: (509) 946-5406

Because of hard work and longstanding interest in the well-being of Benton County, Representative Shirley Hankins is building an excellent record as state legislator for Benton County District 8.

Representative Hankins is completing her fourth year representing you — helping to resolve citizens' problems with state agencies, and serving as a thoroughly knowledgeable representative of Benton County's *technical, business and agricultural interests*.

Economic well-being of this area is a prime concern to Representative Hankins, and she works hard at making sure our needs are met. She is a 27-year resident of the Tri-Cities, working in nuclear programs at Hanford and numerous civic activities.



**Bob
JOHNSON**
Democrat

Bob is a retired disabled veteran who served in Korea, the Cuban Crisis and Vietnam. Since retirement, Bob has earned two Associate degrees from Columbia Basin College. He has also assisted in establishing a union vocational training school where he now instructs. Bob is very concerned about the future of the nuclear industry. Bob has worked in both supervisory and craftsman capacities and, therefore, has practical experience in the construction and operation of nuclear projects. Bob is a dynamic individual who will work hard in Olympia for his constituents. Bob and wife Rosemary have three adult children and two grandchildren.

State Senator Ninth Legislative District



Senator Pat Patterson has served the citizens of the large, diverse 9th Legislative District since 1972 when he was elected to his first of four terms in Washington's House of Representatives. Pat quickly established himself as a dedicated and hard-working member of the Legislature, rising to leadership positions in the Republican Caucus and being appointed by legislative leaders to the important Legislative Transportation Committee.

Pat was elected to the Senate in 1980 and currently serves Senate Committees on Education/Higher Education, Transportation, Natural Resources and the powerful Rules Committee. Pat's bipartisan approach to legislation has won him praise from Republicans and Democrats alike, and his strength and consistency on issues such as tax reform has won him the respect of 9th District voters.

A Pullman native and graduate of Washington State University, B.A. Political Science, Pat served his country as an Infantry Officer in WW II. He was WSU's Director of Alumni Relations for 26 years during the university's most dramatic growth period. Pat established the WSU Scholarship and Development Program, enabling thousands of deserving students to obtain a college education.

Pat and his wife Maxine have been married for 44 years and have seven grown children.



**E. G. (Pat)
PATTERSON**
Republican

Tom Bailie brings to this office the promise of energetic leadership and genuine concern for the 9th District.

As a farmer, Tom knows that we need to actively promote foreign trade and support agricultural research. He feels that it is time agriculture is recognized as the means to our children's future and our state's revenues.

Tom is an aggressive community leader and an involved citizen. As president of the Columbia Basin Land Protection Association, he led the fight against BPA to keep powerlines off prime farm land when feasible alternatives are available.

Education is another priority concern for Tom. He feels that our public educational system cannot function properly if the schools are going from budget crisis to budget crisis — without adequate incentives for teachers or students. We need stability in public schools so we can offer our children the best educational environment possible. He believes control of schools must be in the hands of local communities.

Tom and his wife Linda live on their family farm near Mesa with their five children. His memberships include the Washington State Cattlemen's Association, Board of Directors for Catholic Family Services, and Tom Foley's Agricultural Advisory Committee.



**Tom
BAILIE**
Democrat



State Representative Ninth Legislative District

P
O
S
I
T
I
O
N
1



**Darwin R.
NEALEY**
Republican

Representative Darwin Nealey has established a record of working hard for, and listening to, the people of the 9th District. He has championed the causes of agriculture and education.

Darwin serves on the Agriculture Committee, the State Government Committee, the Energy and Utilities Committee, the Joint Select Telecommunications Subcommittee, the High Level Nuclear Waste Subcommittee, and he is a representative to the National Conference of State Legislatures.

A graduate of WSU, and a farmer for over 40 years, Darwin is well acquainted with the unique needs of this district. He and his wife Evelyn live in LaCrosse.



**Jim
TIMMONS**
Democrat

Campaign Address:
P.O. Box 1333
Pasco, WA 99301
Telephone: (509) 547-0550

Effective leadership in the Legislature is essential to Southeastern Washington. Jim Timmons will make our schools a priority. Jim supports higher education and is a strong voice for agriculture.

It's time we had a legislator who will work hard to represent us. Jim Timmons cares about people, and he will be a determined and effective voice for us in Olympia. A family farmer with a degree in economics, Jim *listens* to the people in his district.

Your vote is important to Jim, and he intends to earn your support.

P
O
S
I
T
I
O
N
2



**Eugene A.
PRINCE**
Republican

Eugene Prince is completing his second term as Ninth District Representative. He previously served thirteen years on staff as Sergeant at Arms, Assistant Chief Clerk, etc.

Prince is minority chairman of the Higher Education Committee. He also serves on Agriculture and Transportation Committees, Joint Administrative Rules Review Committee, WSU/Eastern Coordination Study, Committee on Governance, Financial Aid/Tuition and Fees. He is the Caucus Assistant Minority Whip.

Prince will continue working towards administrative efficiency and maintenance of essential services.

A graduate of WSU, Prince is engaged in wheat farming. He and his wife Patsy have four children and five grandchildren.



**George
LEDGERWOOD**
Democrat

Born and raised in Garfield County, George has experience in raising and marketing grain and livestock, and the overwhelming problems facing the farming industry today.

Having a current associate broker's real estate license, George knows land values and interest rates and the effect the inflated values are having on our tax base.

George has three teachers in his immediate family, which gives him first-hand knowledge of the educational system and where some of the major problems lay.

In addition to 8 years in county government, George is ready to represent the people of the 9th District.

State Senator Twelfth Legislative District



**George
SELLAR**
Republican

State Senator George Sellar has lived in North Central Washington all his life. He attended local schools, raised his family, and built his career here.

Senator Sellar is Republican Caucus Chairman, his party's second highest leadership position. As a legislative leader, George Sellar works closely with legislators from both parties to hammer out solutions to critical problems affecting our area.

George Sellar has been working for responsible state budgets and for a permanent lid on the growth in state spending.

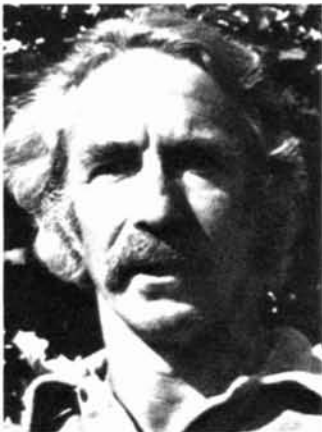
He has been fighting to protect and promote agriculture and to keep our farms and ranches free from unnecessary government interference.

Senator Sellar has been working for quality education that stresses the basics and prepares our children for today's highly competitive world.

George Sellar is striving to achieve a stronger economic climate, to make our lives better, more secure and more prosperous.

Senator George Sellar is a hardworking, effective legislator. His knowledge of the legislative process and how to make it work for the people of the 12th District is unmatched.

George Sellar is one of us, for all of us, so let's keep him on the job.



**Lee
BERNHEISEL**
Democrat

Lee Bernheisel is a native Washingtonian and a farmer in the Methow Valley. Lee, a skier and backpacker, is 41 years old. He is a vigorous environmentalist and was voted Citizen Activist of the Year for 1984 by the Washington Environmental Council. As a founding member of the Okanogan Wilderness League, and a member of the Board of Directors for the Methow Valley Citizens Council, Lee is active in land use issues.

Lee believes in a region-wide growth management plan. Our natural resources have economic value and these resources must be given equal consideration with market resources in the developmental decision making process. His view is that government has the responsibility to ensure that the rights of the individual are protected from powerful special interest groups. Lee believes that a more equitable formula for school funding must be developed to ensure that rural schools receive their fair share of state funds. He believes in research and action to lower family farm production costs, and the development of new markets for our agricultural abundance. Lee supports the ERA, equal pay for equal work, supports the nuclear freeze and opposes using Hanford as the dumping ground for nuclear wastes.



State Representative Twelfth Legislative District

P
O
S
I
T
I
O
N
1



**Clyde
BALLARD**
Republican

Campaign Address:
1790 N. Baker Ave.
East Wenatchee, WA 98801
Telephone: (509) 884-5239

Clyde is serving his first term in the Legislature.

The committees that he serves on are Agriculture, Local Government, Social and Health Services, Financial Institutions and Insurance. He also serves on a number of special committees including Institutional Industries, Recreational Resources, Health Care Cost Containment, Public Health and the select committee to study Workers Compensation.

He co-chaired a subcommittee on Industrial Insurance Law. Other issues were Senior Citizens Resources.

Clyde and his wife Ruth have three grown sons and continue to be involved through his business, community work and church.



**William L. (Bill)
DICKSON**
Democrat

Bill Dickson is a businessman and a farmer who fought for this country in WWII and in Vietnam.

He believes in free enterprise and strict adherence to our Constitution. He knows that the only legitimate purpose for enactment of a law is to protect the life, liberty or property of each citizen. He is against any movement which is dedicated toward unconstitutional control of people or institutions.

Bill is a Christian who believes in Christian morality. If you don't believe in such standards, do not vote for him because you will be disappointed.

P
O
S
I
T
I
O
N
2



**Earl F.
TILLY**
Republican

Campaign Address:
1509 Jefferson
Wenatchee, WA 98807
Telephone: (509) 663-3390

Earl Tilly is currently serving his twelfth year for the 12th Legislative District, a five county area of North Central Washington. He is currently serving on the Ways and Means, Judiciary, Commerce, Legislative Budget, and Public Retirement Committees and the Winter Recreation Commission — all important to his district.

Earl feels a strong commitment to serve all of the people in his district. Injured workers, crime victims, senior citizens, orchardists, farmers, and students have all found this State Representative anxious to help. If you have a problem or question call Earl at 663-3390.

Earl and his wife Barbara have three children.



**Michael S.
DETERING**
Democrat

Campaign Address:
Rt. 1, Box 224
Manson, WA 98831
Telephone: (509) 687-3606

Education is a lifelong process. Our system should open doors for all and promote a life of independence.

Our future needs long term investments of work, ideas, deeds and money by all people who must be encouraged through an improved fair tax base and freedom of discriminatory harassment in jobs.

Women need more choices than abortion and poverty wage discrimination when left without support.

Small business persons, family farmers, wage earners all need a stronger voice in Olympia. We need to seek the best solution for our lives without influence of monied special interest groups.

State Representative Thirteenth Legislative District



P
O
S
I
T
I
O
N
1



**Glyn D.
CHANDLER**
Republican

Campaign Address:
1816 Dunn Street
Moses Lake, WA 98837
Telephone; (509) 765-4594

Glyn Chandler is seeking his second term in the House of Representatives. He has 27 years of experience as a successful farmer and businessman. Glyn understands community needs and problems. He has worked to help all the people of his district. Glyn Chandler gives the 13th District a strong, experienced voice in Olympia.



**Martin
PEDERSEN**
Democrat

Martin Pedersen, Kittitas County farmer and former Washington State Game Commissioner, is dedicated to representing everyone in the 13th District and pledges to visit local areas for regular office days.

As a member of the House majority caucus, Martin will work hard for agriculture, education, fish and wildlife, and the economy. Pedersen is especially committed to a comprehensive water plan for the area.

Martin believes that "we must promote an economic climate in which our agricultural products can prosper. A healthy economy is also needed to solve the problems of unemployed and underpaid workers, many of whom are women."

P
O
S
I
T
I
O
N
2



**Curt
SMITH**
Republican

Representative Curt Smith has been in the farming business most of his life, is a World War II veteran, and a member of the United Church of Christ. Born on a farm in Nebraska, he was educated at the University of Nebraska. Curt and his wife Lucille operate a farm between Ephrata and Quincy (29 years).

Curt provides important leadership for agriculture. He believes we can set priorities to control state spending.

Curt has put this experience into practice the last six years as our Legislator. Curt has clearly shown his willingness to represent the concerns of our district.



**Bruce
WILKES**
Democrat

Bruce Wilkes knows the time has come for a positive approach to state government. Our interests are not always recognized by Western Washington legislators, but Bruce will work to show them our side and get the job done.

Bruce knows there is no substitute for thoughtful, problem-solving approaches to the problems that face us. He views government as a partner in economic development and believes in careful use of our tax dollars. Bruce hopes to make education at all levels more responsive to local needs.

Bruce knows that the bottom line is communication. He will keep the lines open.



State Representative Fifteenth Legislative District

P
O
S
I
T
I
O
N
1



Warren ROOT Republican

Campaign Address:
Committee to Elect Warren Root
Route 3, Box 3690
Prosser, WA 99350
Telephone: (509) 786-3822

As a longtime resident of the Lower Valley, I have admired the established tradition of responsible representation in our district. I think we should continue that tradition!

I have only one real desire. I hope to add a measure of common sense and guts to the legislative process. I believe we should be served by a "Citizen Legislature", not professional politicians.

My proven concern for the people of our valley, my business background in an agricultural area, and history of community service equip me to make a positive and significant contribution in Olympia.

Please help me continue the tradition.



Margaret RAYBURN Democrat

Campaign Address:
Margaret Rayburn's
Campaign
P.O. Box 648
Grandview, WA 98930
Telephone: (509) 882-1851

Few are so perfectly suited to represent us. Margaret recognizes excellence and efficiency in our farmers and will work for the same excellence in our schools.

Margaret wants to maximize water resources in Yakima River Basin; provide quality schooling for *all* children — including gifted, disabled and retarded; and protect children from abuse. Like farmlands, children are resources we must develop — they are our future.

Margaret, 57, a popular Grandview teacher and counselor for 30 years, and husband Glenn have 2 children and have farmed for 27 years.

Elect Margaret Rayburn — a strong and energetic leader for agriculture, education, the district.

P
O
S
I
T
I
O
N
2



Harold CLAYTON Republican

Campaign Address:
412 Bolin Drive
Toppenish, WA 98948
Telephone: (509) 865-4411

Representative Clayton has spent the last 8 years representing the 15th District. Lived in Toppenish 34 years. World War II veteran. Active in community affairs including Boy Scouts. Ten years Toppenish School Board. Diversified farming and businessman in Valley area. Fifteen years on Board of Directors of Central Washington Farm Crops Association. Three years Washington Asparagus Growers.

He is presently Minority Chairman, Labor Committee, member, Transportation Committee, and Environmental Affairs Committee.

Works on any issue that concerns the area: jobs, water, environment, schools, business, housing.

Harold Clayton gives agriculture and business a strong voice in Olympia. Does work for you.



Forrest BAUGHER Democrat

Yakima Valley native Forrest Baugher believes in a positive, problem-solving approach to state issues. "I will not ask for special privileges or sacrifice common sense to political game playing."

"Encouraging agriculture, protecting our water resources and attracting new businesses to the Valley will give our children a future here."

As a concerned father and grandfather, Forrest values locally controlled quality education. "Education's share of the budget must not be wasted."

As an electrician, orchard owner and active citizen, Forrest knows a legislator must truly want the job. "We need a vision of the future that includes positive, grassroots solutions."

**State Senator
Sixteenth Legislative District**



**Jeannette
HAYNER**
Republican

Campaign Address:
Box 454
Walla Walla, WA 99362

Jeannette Hayner has served 4 years in the House of Representatives and 8 years in the Senate. In 1979, she was elected to the position of Senate Republican Leader, a position she still holds. She has served on the local school board and the Education Committee in both the House and Senate.

Jeannette's goals are to prevent increased taxes and to limit government regulation of our laws. She has maintained a record of conservative fiscal responsibility. She has always supported legislation that would encourage a favorable business and agricultural climate in this state. She serves on the important Senate Judiciary Committee and the budget-writing Ways and Means Committee.

Senator Hayner, a graduate of the University of Oregon School of Law, is a long time resident of the 16th District. Her husband Dutch, a native of Eastern Washington, is a practicing attorney. Senator Hayner and her husband have been active in a wide variety of community, business and church activities. Both are recipients of the Award of Merit given by the Walla Walla Area Chamber of Commerce in recognition of service to the community. They have three grown children.



**Sally
UNDERWOOD**
Democrat

During her 26 years of community service, Sally Underwood has earned a reputation for providing leadership that unites people in working together to solve problems. She believes the State Legislature can become more effective by reducing partisan conflict and increasing bipartisan cooperation.

Major state concerns include economic development that provides more jobs and uses our state's resources wisely; expanded markets for our farm products; support for education, both K-12 and post-secondary, that recognizes the central importance of education in our present and future; and adequate human services that respect human dignity.

Sally Underwood served eight years on the Walla Walla School Board, twice as president, and she is known for her commitment to careful spending of tax money and sound fiscal management. She is a former president of the Walla Walla League of Women Voters and a PTSA Golden Acorn Award recipient. She served as a National Commission officer in the United Methodist Church. In 1983, she served on a Walla Walla Police Chief Selection Advisory Committee. She is currently a member of the United Way Board of Directors.

Sally Underwood is an instructor in English as a Second Language at Walla Walla Community College.



State Representative Sixteenth Legislative District

P
O
S
I
T
I
O
N
1



**Peter T.
BROOKS**
Republican

Married to Betty, five adult children, retired general surgeon. Thirty-five years practice in Walla Walla. B.A. degree, Harvard, Government; ten years Precinct Committee Chairman; Finance Chairman, Congresswoman May's campaigns. Past President, Washington State Medical Association; Washington State Chapter, American College of Surgeons.

Peter Brooks is *qualified* to be a *responsible* member of your Legislature. He will keep an open mind on all issues. He will listen to and represent every segment of the 16th district.

Peter feels that we *must* preserve our constitutional right of individual freedom and will be a strong voice for the 16th District voters.



**Miles
KING**
Democrat

Campaign Address:
Committee to Elect
Miles King
P.O. Box 1180
Pasco, WA 99301
Telephone: (509) 547-3167

Washington can have a great future if we make the right decisions *now*.

We should diversify our economy by providing a good climate for new business. We must also develop new markets for state products, both at home and abroad. Business looks for a skilled work force, good schools, and good public facilities including transportation and water systems. It also needs a fair tax structure and an adequate supply of investment capital. New markets and business activity mean *jobs*. A prosperous economy means we can afford quality education and the other services we need.

Acting *together* we can do it.

P
O
S
I
T
I
O
N
2



**Richard (Doc)
HASTINGS**
Republican

Campaign Address:
Hastings for Representative
P.O. Box 2987
Pasco, WA 99302
Telephone: (509) 547-7072

Representative Richard 'Doc' Hastings is seeking his fourth term in the House of Representatives. His legislative experience has taken him to the leadership position of Republican Caucus Chairman. As a small businessman and family man, Doc believes that government should live within its means just as the private sector does. He also believes that only with a strong economy can jobs be maintained and growth sustained. A native Washingtonian, Doc is president of Columbia Basin Paper and Supply in Pasco. He and his wife Claire have three children: Kirsten 15, Petrina 14, and Colin 8.



**Bill
GRANT**
Democrat

Campaign Address:
Committee to Elect Bill Grant
111 Merriam
Walla Walla, WA 99362
Telephone: (509) 529-4929

I am a lifelong resident of the 16th District and a fourth generation wheat farmer. I am a graduate of Whitman College and a Trustee of Walla Walla Community College.

I take pride in being known as a hardworking, fair and honest person — one who is committed to his family, his community and his state.

Partisan politics is proving to be noneffective for Eastern Washington. We need a fiscally conservative and responsible voice from the 16th District who will be heard by both parties . . . Republican and Democrat. *I will be that voice!*

How to Obtain an Absentee Ballot

Any registered voter who cannot vote in person may apply to the county auditor or department of elections for an absentee ballot. Any *signed* request with the necessary information will be honored. For your convenience, an application form is reproduced below. The addresses of the auditors or departments of elections are also listed below. In order to be certain that an absentee ballot request is authentic, the election laws require that the signature on the application be verified by comparison with the signature on the voter's permanent registration record. For this reason, if a husband and wife both wish to vote by absentee ballot, both must sign the application form or separate, signed requests should be submitted. *In order to be counted, an absentee ballot must be voted and postmarked no later than the day of the election.* If you intend to vote an absentee ballot, make your request as soon as possible to allow sufficient time for an exchange of correspondence with the county auditor or department of elections. Absentee ballot requests may be presented in person at the office of the county auditor or department of elections up until the day of the election. No absentee ballots may be issued on the day of the election, **except** to a voter who is confined to a hospital on election day and was admitted no earlier than five days before the election. A member of the family or an authorized messenger may pick up and return the voter's absentee ballot. If you need such a ballot, contact the hospital administrator, county auditor or department of elections.

COUNTY	ADDRESS	CITY	ZIP	COUNTY	ADDRESS	CITY	ZIP
Adams	210 West Broadway	Ritzville	99169	Klickitat	211 So. Columbus	Goldendale	98620
Asotin	P.O. Box 129	Asotin	99402	Lewis	P.O. Box 29	Chehalis	98532
Benton	P.O. Box 470	Prosser	99350	Lincoln	P.O. Box 366	Davenport	99122
Chelan	P.O. Box 400	Wenatchee	98801	Mason	P.O. Box 400	Shelton	98584
Clallam	223 East 4th	Port Angeles	98362	Okanogan	P.O. Box 1010	Okanogan	98840
Clark	P.O. Box 5000	Vancouver	98668	Pacific	P.O. Box 97	South Bend	98586
Columbia	341 East Main St.	Dayton	99328	Pend Oreille	P.O. Box 5000	Newport	99156
Cowlitz	207 North 4th	Kelso	98626	Pierce	930 Tacoma Ave. So.	Tacoma	98402
Douglas	P.O. Box 456	Waterville	98858	San Juan	P.O. Box 638	Friday Harbor	98250
Ferry	P.O. Box 498	Republic	99166	Skagit	P.O. Box 1306	Mount Vernon	98273
Franklin	1016 North 4th Ave.	Pasco	99301	Skamania	P.O. Box H	Stevenson	98648
Garfield	P.O. Box 278	Pomeroy	99347	Snohomish	3000 Rockefeller Ave.	Everett	98201
Grant	P.O. Box 37	Ephrata	98823	Spokane	West 1116 Broadway	Spokane	99260
Grays Harbor	P.O. Box 751	Montesano	98563	Stevens	P.O. 189	Colville	99114
Island	P.O. Box 697	Coupeville	98239	Thurston	2000 Lakeridge Dr. S.W.	Olympia	98502
Jefferson	P.O. Box 563	Port Townsend	98368	Wahkiakum	P.O. Box 543	Cathlamet	98612
King	500 4th Avenue	Seattle	98104	Walla Walla	P.O. Box 1856	Walla Walla	99362
Kitsap	P.O. Box 189	Port Orchard	98366	Whatcom	P.O. Box 398	Bellingham	98225
Kittitas	5th & Main	Ellensburg	98926	Whitman	P.O. Box 350	Colfax	99111
				Yakima	North 2nd & East "B"	Yakima	98901

----- CLIP FORM OUT ON THIS LINE -----

Absentee Ballot Request

I _____ PRINT NAME FOR POSITIVE IDENTIFICATION HEREBY DECLARE THAT I AM A REGISTERED VOTER

AT _____ ADDRESS _____ CITY OR TOWN _____ ZIP

PHONE NO. _____ PRECINCT _____ (IF KNOWN)

SEND MY BALLOT TO: ☐ SAME ADDRESS AS ABOVE: ☐ THE ADDRESS BELOW:

_____ STREET ADDRESS _____ CITY OR TOWN _____ STATE _____ ZIP

This application is for the state general election to be held on November 6, 1984.

**TO BE VALID, YOUR
SIGNATURE MUST
BE INCLUDED**

SIGNATURE X _____

SIGNATURE X _____

Note: If husband and wife both want absentee ballots, signatures of each are necessary.

FOR OFFICE USE ONLY

REGISTRATION NUMBER _____ PRECINCT CODE _____ LEG. DIST. _____

REGISTRATION VERIFIED _____ DEPUTY SIGNATURE _____ BALLOT MAILED _____

BALLOT CODE _____ ADDRESS CHANGE _____ BALLOT RETURNED _____



1 · 9 · 8 · 4

VOTERS and CANDIDATES PAMPHLET

AVISO: Existe traducción al español de la mayor parte del texto del Panfleto de Votantes. Si Ud desea recibir esta información en español, hágalo ordenando su ejemplar (copia) a la oficina del auditor del condado, departamento de elecciones del condado, o bien enviando su nombre y dirección a:

**SECRETARY OF STATE
LEGISLATIVE BUILDING
OLYMPIA, WA 98504**

El Panfleto le será enviado gratis a vuelta de correo.

BULK RATE
U.S. POSTAGE
PAID
Seattle, Washington
Permit No. 1216

CAR. RT. PRESORT

RESIDENTIAL PATRON, LOCAL

EDITION NO. 2