

# We the People

# Circle. I

Section 4. The House of Representatives shall be composed of Members chosen every second year by the People in each State, shall have the sole Power of Impeachment, and shall have the sole Power to impeach, and the Senate shall have the sole Power to try all Impeachments. No Person shall be a Representative who shall not, when elected, have seven years next to his Age, be seven Years and seven Months and ten Days a Citizen of the United States, and who shall not, when elected, be an inhabitant of that State in which he shall be chosen.

# VOTERS'

Section 3 The format of the analysis tables shall be comprised of the information from each sheet, chosen by the Log, suitable for comparison. Each sheet shall have one entry.

# PAMPHLET

Mr. Powers shall be admitted to the same, shall not have attained to the Age of thirty Years, and have never been a Citizen of the United States, and who shall not, when admitted, have taken an Oath of Fidelity for which he shall have sworn.

**OFFICIAL, LOCAL VOTERS' PAMPHLET**

judgment on basis of Chapman's oral statement, which was not taken further than a summary form given, and Chapman's failure to look and enjoy any of the of them. That is, Right, near the United States, but the Party committed small as nothing to be back and sought to Environment, Family Judgment and Environment, according to Law.

Section 4. The Names, Places and Manner of holding Elections, for Senators and Representatives, shall be prescribed in each State by the Legislature thereof; but the Congress may at any time by Law make or alter such Regulations, except as to the Places of choosing Senators.

*This Congress shall assemble at the usual time, to wit: on the first Monday in December, unless they shall by law appoint a different day.*

**Office of the Secretary of State**

King County Division of Records

**Art. 10.** Every Member shall keep a Journal of the Proceedings of the Society, and the same shall be published at the close of every year, and sent to every Member, and the names and names of the Members of the Society, and any question shall be the duty of the Society to have the same sent to the Journal.

Neither House, during the Session of Congress, shall, without the consent of the other, adjourn for more than three days, nor to any other place than that in which the two Houses shall be sitting.

Section 10. The Convention and Appropriations shall reserve a Compensation for the members, to be ascertained by law, and be paid out of the Treasury of the United States. The members shall be entitled to the same rank and pay as the members of the Senate, and shall be entitled to the same allowance as the members of the Senate. The members shall be entitled to the same allowance as the members of the Senate.

NOVEMBER 3 1987

He shall be a Member of the House during his Constitutional Term.

which shall have been convicted, or the Commission shall have been otherwise duly notified, and the person so notified shall be a Member of the House in any of the continuance or office.

WASHINGTON STATE LIBRARY **Edition 8**  
STATE DEPOSITORY COPY

---

## INTRODUCTION TO THE 1987 VOTERS' PAMPHLET

---

Fellow Washingtonians:

It is my pleasure to take part in introducing you to the King County edition of the 1987 Voters' Pamphlet which for the first time contains information on both state and local issues and races.

Washington has always been at the forefront of efforts to better inform the electorate about issues and candidates. In 1914, the state became one of the first in the nation to publish a voters' pamphlet for its citizens. In recent years, this information service has been expanded to include tape cassette, Braille, and Spanish-language versions of the pamphlet.

Another recent development has been the passage of legislation authorizing cities and counties to produce voters' pamphlets on local issues and candidates. With the publication of this edition, King County and Seattle are among the first local municipalities to take advantage of these new opportunities for increased voter information.

I want to thank and congratulate King County and the City of Seattle for their participation in this combined pamphlet. There are more local jurisdictions in King County than almost any other county in the nation, making the production of this pamphlet a monumental undertaking. The people who developed this publication deserve our thanks for a job well done.

This pamphlet will assist you in making decisions on the critical issues and important races which face us this year. I urge you to make full use of its contents, and to exercise your constitutional right by voting on November 3.



  
Ralph Munro  
Secretary of State

Dear King County Resident:

This Voters' Pamphlet commemorates the 200th anniversary of our United States Constitution. In those 200 years, our nation has strived to be a government "of the people, by the people and for the people." Every citizen 18 years and older now has the opportunity to elect our leaders, vote on issues, and shape our future.

This inaugural issue of the King County Local Voters' Pamphlet brings to all King County residents for the first time the opportunity to study local candidate statements and issues on their ballot. Voter registration information, a sample ballot, absentee ballot requests and other election information are included for your benefit. Special editions in Spanish, Chinese, Braille, and tape cassettes are available so that more of our citizens can make informed decisions.

The voters' pamphlet represents regional cooperation at its finest—public agencies sponsoring a forum in which candidates for public office can share their platforms and backgrounds with the voters who elect them. I extend special thanks to all who joined King County in this first edition.

I urge you to read this pamphlet and study the issues. Then join with me on Tuesday, November 3, to vote and continue our heritage of "We the people . . . ."



  
Tim Hill  
King County Executive

# TABLE OF CONTENTS

WASHINGTON STATE LIBRARY



A60004 708159

Page

Referendum Bill 41 .....	4
Initiative to the Legislature 92 .....	6
Senate Joint Resolution 8207 .....	8
Senate Joint Resolution 8212 .....	10
House Joint Resolution 4212 .....	12
House Joint Resolution 4220 .....	14
Complete Text of State Measures .....	16
King County .....	19
Port of Seattle .....	22
Cities and Towns .....	23
School Districts .....	31
Fire Districts .....	39
Water Districts .....	41
Sewer Districts .....	42
Hospital District .....	42
Complete Text of Propositions .....	43
Major Political Party Caucus and Convention Procedures .....	45
Independent Candidate and Minor Political Party Nominating Procedures .....	46
Voter Information .....	46
Sample Ballot .....	47
Absentee Ballot Request Form .....	47

**Your Voter Registration Card will assist you in the use of this pamphlet and at the polls on election day.**

**CERTIFICATE OF REGISTRATION**  
 KING COUNTY, STATE OF WASHINGTON CERTIFIES THAT:  
 • VOTER JANE Q  
 • 0000 FREEDOM ST  
 • SEATTLE 00000  
 is eligible to vote in SEA 00-000 precinct  
 as of 05/03/82 Registration Date 04/03/82  
 REGISTRATION NO KI-00-000-0000  
 POLLING PLACE NEIGHBORHOOD SCHOOL  
0000 ELECTION AV  
 You are eligible to vote in the following districts:  
 LEGISLATIVE 01 CONGRESSIONAL 0 COUNTY COUNCIL 1 JUDICIAL SE  
S1, D4 F4 W14 H-2 DM IPR

Name of voter and address at which registered.

Voting precinct number (or sometimes a name).

Date of registration.

This voter's registration number.

Location at which this voter votes.

Washington State Legislative District.

County Council member district.

School District number, other taxing districts.

Date that voter can *actually* start voting in this precinct.

**LIBRARY USE ONLY**

SECRETARY OF STATE TOLL-FREE HOTLINE

1-800-824-VOTE (8683)

SECRETARY OF STATE TDD TOLL-FREE HOTLINE.....

1-800-422-VOTE (8683)

KING COUNTY DIVISION OF RECORDS AND ELECTIONS:

Voter Registration Information .....344-5282

Election Information .....344-2565



# REFERENDUM BILL 41

Chapter 246, Laws of 1987

Note: The ballot title and explanatory statement were written by the Attorney General as required by law. The complete text of Referendum Bill 41 begins on page 16.

Vote cast by the 1987 Legislature on final passage:  
HOUSE: Yeas, 77; Nays, 17; Absent or not voting, 4.  
SENATE: Yeas, 36; Nays, 9; Absent or not voting, 4.

## Statement for

In the 1890's, large special interests gained immense power. By 1913, what Lincoln had called "the money power" pushed the Federal Reserve Act through Congress, allowing the Fed control of the money system.

Money supply is the most important factor affecting our economy. The U.S. Constitution delegates monetary power to Congress. Congress gave this authority to the Fed, a private interest: a group of bankers overseeing a network of banks. The Fed behaves as an independent agency, essentially free from checks and balances restraining the power of other government branches.

The Fed is not only unconstitutional, it isn't working. Bank failures, business bankruptcies, farm foreclosures, unstable rates of inflation, interest and employment, trade deficits and national deficits are classic symptoms of a failing money system. Congress established the Fed to prevent such problems.

The Washington Legislature, long noted as a trend-setter, again leads the nation. Referendum 41 passed by 80% in both the House and Senate. They could have gone directly into Supreme Court, by-passing the voters. But because the people have never been heard regarding their money system, a statewide vote on constitutionality makes this a truly historic measure.

Washington is not alone in its concern. 21 state legislatures have taken action criticizing the Fed. Many states will join us in Supreme Court when Referendum 41 passes.

## Official Ballot Title:

Shall the State challenge in the United States Supreme Court the constitutionality of authority delegated to the federal reserve system?

## The law as it now exists:

The Federal Reserve System, created by Congress in 1913, authorizes the Federal Reserve Board to exercise some controls over Federal Reserve banks and the nation's monetary policy. The following are some of the Board's powers: general supervisory powers over federal reserve banks, controlling discount rates, providing exceptions from bank

Referendum 41 is not a complete solution, but a necessary first step toward a solution. Your vote for Referendum 41 will convince Washington D.C. that we are serious about protecting our future.

## Rebuttal of Statement against

Referendum 41 will save you money. Cost will be about 5¢ per person, but could save \$7.00 per person the Fed now collects each year in interest on paper money they issue.

Suit is based on delegation and separation of powers doctrine, never before brought against Fed. Supreme Court will hear case brought by statewide ballot vote, especially with other states joining Washington.

No case directly challenging Fed's constitutionality has ever before reached Supreme Court.

### Voters' Pamphlet Statement Prepared by:

JACK METCALF, State Senator; RAY MOORE, State Senator; ROY A. FERGUSON, State Representative.

Advisory Committee: BOB WILLIAMS, State Representative; EUGENE V. LUX, State Representative; SHIRLEY J. WINSLEY, State Representative; BOB DILGER, Executive Secretary, Washington State Building and Construction Trades Council (AFL-CIO); ART BRADEN, Vice President, JC's Governmental Affairs.

reserve requirements, requiring write offs of worthless bank assets, and controlling the issuance of Federal Reserve notes. Some of the purposes of the Federal Reserve System are: providing a nearly uniform discount rate, control of the money supply, requiring reserves for protection of banks, permitting elasticity in the creation of currency, supervision of the banking business and creation of a market for commercial paper.

## The effect of Referendum Bill 41, if approved into law:

The State Legislature is to seek, through an attorney it selects, to have the United States Supreme Court accept a lawsuit commenced by the state. The lawsuit would challenge (1) the constitutionality of the delegation to the Federal Reserve System of the power to create money and exercise control over economic activity, and (2) the delegation of authority under which banks have made unrestricted foreign loans.

## Statement against

### SAVE MONEY - VOTE "NO" ON REFERENDUM BILL 41

The lawsuit proposed by this referendum would be frivolous and costly. In 1982 the Attorney General of the state of Washington declined to file a lawsuit challenging the constitutionality of the Federal Reserve System because there was "no real possibility that the United States Supreme Court would strike down that law (if challenged) as an unconstitutional delegation of the power of Congress." In fact, the claim is so weak that the United States Supreme Court would probably not even consider it.

### LAWSUITS ARE EXPENSIVE

Your tax dollars and the human resources that would be spent conducting such a lawsuit would be wasted. These resources should be put to better use meeting the needs of the people.

### FEDERAL RESERVE SYSTEM IS CONSTITUTIONAL

Congress created the Federal Reserve System in 1913 to meet the country's need for a safer and more stable monetary system. It has properly fulfilled that role for almost 75 years. Congress oversees the operations of the Federal Reserve System through regular hearings and its review of semiannual reports. Also, the expenses of the Federal Reserve System are audited each year by the General Accounting Office, the auditing arm of Congress.

The United States Constitution gives Congress the power to regulate money and banking. The delegation by Congress to the Federal Reserve System of that power has been consistently upheld by the courts. A court challenge of

that delegation cannot win. It is wasteful to raise the issue again. Lawsuits are expensive. Save your tax dollars.

### VOTE "NO" ON REFERENDUM BILL 41

## Rebuttal of Statement for

Don't be misled by false claims and don't waste the taxpayers' money!

- The "Fed" is not "a private interest" group. Board members are appointed by the President and confirmed by the Senate.

- It is simple-minded to blame all our complex economic problems on this public agency.

- The Federal Reserve System's constitutionality has been consistently upheld by the courts.

Do not vote for a costly and frivolous lawsuit: Vote NO on 41.

### Voters' Pamphlet Statement Prepared by:

ARLIE U. DeJARNATT, State Senator; MAX VEKICH, State Representative; JOHN R. PRICE, Dean and Professor of Law, Seattle.

Advisory Committee: R. TED BOTTIGER, State Senator; KATHERINE ALLEN, State Representative; MIKE VESETH, Professor of Economics, Tacoma; RONALD GOULD, Attorney, Seattle.



# INITIATIVE MEASURE 92

## TO THE LEGISLATURE

NOTE: The ballot title and explanatory statement were written by the Attorney General as required by state law. The complete text of Initiative Measure 92 begins on page 16.

### Official Ballot Title:

Shall it be a consumer protection violation for doctors treating Medicare eligible patients to charge more than Medicare's reasonable charges?

### The law as it now exists:

Medicare is a federal health insurance program under the Medicare law (Title XVIII of the Social Security Act). The administration of the Medicare program establishes what are entitled "allowable charges" (labeled by law as "reasonable charges") to determine the base for computing the payment by Medicare for medical services to

Medicare patients. At the present time, Medicare most frequently pays 80 percent of Medicare's established charges.

No state law limits the charges that can be made by physicians and other health care providers to Medicare patients. Physicians and other health care providers can charge Medicare patients more than the federally designated "allowable/reasonable charge." However, physicians who choose to contract as a "participating physician" in the federal Medicare assignment repayment program cannot charge any Medicare eligible patient more than the Medicare established charge. Physicians who do not contract but do directly submit billings to Medicare for individual patients cannot charge those individual patients more than the Medicare established charge.

Physicians are not required to enroll as providers in the Medicare program, nor to participate in the Medicare assignment repayment program. If the physician does not so participate, the patient, or the entity paying for the service, directly seeks partial reimbursement from Medicare for the medical services.

### The effect of Initiative Measure 92, if approved into law:

The State Consumer Protection Act would be amended to declare it to be an "unfair and deceptive practice" for a physician which includes medical doctors, osteopaths, chiropractors, podiatrists, dentists or optometrists to charge or try to collect for medical services to a Medicare eligible patient more than Medicare's established "allowable/reasonable charge." It would also be an "unfair and deceptive practice" for a physician to treat Medicare eligible patients other than solely in an emergency situation without enrolling as a "participating physician" in Medicare and being subject to the maximum charges established by Medicare.

Physicians would be required to post a summary of the initiative in their offices and failure to comply with its requirements could result in civil penalties, money damages or court injunctions. The State Attorney General or a Medicare patient could file a civil suit to enforce the law seeking treble damages not exceeding \$10,000, the costs of suit and attorneys fees. Additional penalties of up to \$25,000 can be imposed for violation of a court ordered injunction.

### Statement for

In 1965 Congress created Medicare because health care for America's elder citizens was in critical condition. Bad as things were then, the crisis is even worse today.

Seniors now spend more of their incomes on health care than they did before Medicare existed. The elderly spent 12 percent of their income on health care in 1980. By 1990 they will pay 19 percent, unless we do something quickly.

Initiative 92 cannot cure all of Medicare's ills, but it will take much of the uncertainty out of health care. It will make it illegal for a doctor to charge more than Medicare determines to be a "reasonable and customary charge." Seniors will know that Medicare will always pay 80 percent of their doctor's bills and that they are responsible for 20 percent. Doctors won't get away with overcharging their patients.

And once Initiative 92 passes, the complicated Medicare forms that intimidate so many elderly patients will become the responsibility of the doctor's office.

Initiative 92 will help families. Seniors on limited incomes cannot afford ever-increasing medical bills. By making medical care more affordable, Initiative 92 will make it less likely that the elderly will become a financial burden to their families.

Under the current Medicare reimbursement system, our state's sick and elderly people are forced to either subsidize their doctor's healthy incomes or go without medical care, causing minor illnesses to become major emergencies. That's bad medicine.

Vote YES on Initiative 92.

### Rebuttal of Statement against

Too bad organized medicine uses threats and misinformation.

Doctors claim Initiative 92 could limit access to health care. . .

Fact: Overcharges already keep many seniors away.

Doctors say Medicare doesn't pay them enough. . .

Fact: According to the AMA, the average doctor's take home pay is \$110,000. The average senior citizen receives a monthly Social Security payment of \$488.

Fact: I-92 will cost taxpayers nothing and stop doctors from overcharging.

Protect our health and dignity. Vote yes.

For additional information, call (206) 329-9764.

#### Voters' Pamphlet Statement Prepared by:

GEORGE FLEMING, State Senator; EUGENE V. LUX, State Representative; JIM LEWIS, State Representative.

CLAUDE PEPPER, U.S. Representative, Florida; KEN ANDERSON, President, Washington State Council of Senior Citizens; THOMAS HELLER, M.D., Seattle; SISTER VIRGINIA PAUL, Sisters of Providence, Walla Walla.

### Statement against

#### I-92 IS MISLEADING AND UNFAIR

If I-92 passes, all seniors, regardless of income, retired or working, will be charged less than others for medical care. These discounts will be "shifted" to non-senior patients; costs will increase for families and employers.

Don't believe that Medicare's "reasonable fees" are reasonable. The rates, frozen by Congress in 1984, have little to do with the actual cost of providing service.

#### SOME SENIORS WILL HAVE TO FIND NEW DOCTORS

If I-92 passes, some doctors will be forced to drop seniors and will be *prohibited by law from treating anyone over 65*. To quote the Washington Chapter of the American Association of Retired Persons: ". . . of Washington's 39 counties, 25 have areas that do not have enough primary care physicians. Nineteen of these counties have severe shortages. . . (I-92) . . . could cause some physicians to drop out of Medicare, thus limiting the availability of physician services to the elderly. Thus, AARP must oppose I-92." Our state's Senior Lobby does not support Initiative 92.

#### I-92 DENIES HEALTH CARE TO THE TRULY NEEDY

Despite Medicare's unreasonable rates, 27% of all doctors always accept them, over 90% accept Medicare's rates on a case-by-case basis. Many do not require *needy* seniors to pay anything. Under I-92, doctors *must* charge all seniors, regardless of income, the same unreasonable rates or be in violation of the law; true charity care will suffer.

#### I-92 WILL COST WASHINGTON TAXPAYERS MILLIONS

Washington taxpayers should not be charged to bail out, enforce, or endlessly litigate the federal Medicare pro-

gram. Real Medicare reform is needed in Congress. Join the thousands of seniors, employers, union members, health care professionals, and others in *VOTING NO ON I-92*.

### Rebuttal of Statement for

After investigating claims made by I-92 proponents, this committee, appointed by the Legislature to explain the arguments against I-92, has determined that:

- Congress has set Medicare's payment to doctors at approximately half the cost of actually providing medical services.
- Doctors charging medicare patients the same rate as other patients are not "overcharging;" Medicare is "underpaying."
- Current law provides adequate protections against true "overcharging."
- "Limited income" families will suffer if "unlimited income" seniors receive discounted care.

For additional information, call (206) 441-5863.

#### Voters' Pamphlet Statement Prepared by:

R. LORRAINE WOJAHN, State Senator; CLYDE BALLARD, State Representative; PATRICK R. McMULLEN, State Representative.

Advisory Committee: MIKE RENDISH, Chairman, Washington State Legislative Committee of the American Association of Retired Persons (AARP); RICK BROCK, Legislative Representative, Association of Western Pulp and Paper Workers (AWPPW); HANK SNIDER, Chairman, Employers Against Initiative 92; RICK L. JOHNSON, M.D., President, Washington State Medical Association.



# SENATE JOINT RESOLUTION 8207

## PROPOSED CONSTITUTIONAL AMENDMENT

Note: The ballot title and explanatory statement were written by the Attorney General as required by law. The complete text of Senate Joint Resolution 8207 begins on page 16.

Vote cast by the 1987 Legislature on final passage:  
HOUSE: Yeas, 92; Nays, 3; Absent or not voting, 3.  
SENATE: Yeas, 45; Nays, 2; Absent or not voting, 2.

### Official Ballot Title:

Shall the constitution empower superior court judges, after retirement, to complete pending cases in which they had made discretionary rulings?

### The law as it now exists:

When a superior court judge leaves office for retirement or any other reason, the former judge is no longer authorized or empowered to function as a superior court judge. If the parties to a case agree, and the court approves, such a former

judge or any member of the bar can preside as a judge pro tem for the case.

By statute a party to litigation has one opportunity, as a matter of right, prior to a discretionary ruling being made by a superior court judge to have that judge removed from handling a specific case.

### The effect of SJR 8207, if approved into law:

The constitution would be amended to specifically empower previously elected superior court judges upon retirement to continue to handle those pending cases in which the judge had made discretionary rulings prior to retirement. No agreement would be required by the parties for a retired judge to so function.

### Statement for

This change would be of great benefit to the entire judiciary and most particularly those judicial districts with few judges serving the district. There is often a great problem of transition between an outgoing judge and an incoming judge on pending cases. This particularly applies in instances where there are complicated and complex matters. This resolution would allow judges to clear up the caseload of those complicated cases which the judge had been hearing prior to retirement. Many of these cases have been before the court for many years. This would help the incoming judge to assume the regular caseload without pending cases to consume the limited time available.

Superior Court Judges often retire leaving unfinished cases. SJR 8207 would allow such a judge to complete a pending case without written agreement of the litigants. This is an efficient and economical means of continuing a case when a judge retires. A judge's ability after retirement to continue to sit on that case without obtaining consent of the litigants would result in considerable savings to the county, the state and to the parties.

These retiring judges were elected by the people and the parties have already agreed to this judge. In long and complex cases, it would be very difficult and time consuming for the succeeding judge to catch up with the case. The parties would experience delay, and the parties may try to change prior rulings.

### Rebuttal of Statement against

SJR 8207 would authorize assigning a retiring elected judge to continue hearing an unfinished complicated case which would be difficult and costly for a new judge to assume. Although this would seldom be done, when needed, it would save time and money for the county and litigants.

Article V, Sec. 2 of our Constitution, prohibits an impeached judge from continuing on any case. Active and retired judges continue to be subject to the supervision of the courts and impeachment laws.

#### Voters' Pamphlet Statement Prepared by:

IRV NEWHOUSE, State Senator; DENNIS DELLWO, State Representative.

Advisory Committee: PHIL TALMADGE, State Senator; RON MEYERS, State Representative; JACK DEAN, President, Washington State Bar Association; WALTER A. STAUFFACHER, Superior Court Judge, Superior Court Judges Association.

### Statement against

#### SJR 8207 DESTROYS THE ELECTED JUDICIARY

Every citizen who appears in court should be entitled to have his or her case heard by an elected judge—one subject to voter approval every four years. This constitutional amendment destroys that principle.

#### SJR 8207 CREATES A SPECIAL JUDICIAL "ELITE"

If approved by the voters, this measure would create a special category of "elite" unelected judges on the Superior Court bench in any county. Judges under this constitutional amendment could retire from the bench and still sit on cases of their own choosing. There would be no recourse by voters to examine their performance or express their objections through the election process.

#### SJR 8207 WOULD PROTECT IMPEACHED JUDGES

No definition of a retired judge is included in this special amendment for privileged judges. A "retired" judge could have reached such status by impeachment for malfeasance or misfeasance in office, but this measure makes no distinction and would not bar an impeached jurist from continuing to serve on the bench.

#### SJR 8207 BREAKS JUDICIAL AGE PROVISION

Superior Court judges now reach retirement age at 75 and must step down from active duty on the bench, a provision designed to keep our courts from becoming a haven for older jurists. If this constitutional amendment is adopted, a judge could keep serving on a case for life.

SJR 8207 would raise judicial costs. Keeping a Superior Court judge on the bench costs each county and the state up to \$250,000 a year. This additional cost for an "elite" class of judges, who are retired and non-elected, would have to be borne by all of the taxpayers.

### Rebuttal of Statement for

As established in our legal history, judges are required to rule on the "law," not on their own personal opinion. A judge who succeeds to another's case has this same duty.

A matter of "convenience" shouldn't override a bench where judge's decisions are subject to voter review at the ballot box. Nor should we breach the judicial retirement age of 75, or create additional costs to maintain an "elite" corps of jurists at taxpayer expense.

#### Voters' Pamphlet Statement Prepared by:

A.L. "SLIM" RASMUSSEN, State Senator; KENT PULLEN, State Senator.

Advisory Committee: LLOYD GARDNER, Washington Taxpayers Association; GLADYS E. EDWARDS, Property Owners Protection Association, Seattle; WILLIAM FOSBRE, Thurston County Chapter, Overtaxed.



# SENATE JOINT RESOLUTION 8212

## PROPOSED CONSTITUTIONAL AMENDMENT

Note: The ballot title and explanatory statement were written by the Attorney General as required by law. The complete text of Senate Joint Resolution 8212 begins on page 17.

Vote cast by the 1987 Legislature on final passage:  
HOUSE: Yeas, 97; Nays, 1; Absent or not voting, 0.  
SENATE: Yeas, 45; Nays, 2; Absent or not voting, 2.

### Official Ballot Title:

Shall state constitutional restrictions, which prevent investment of some permanent public land funds in stocks and private lending, be removed?

### The law as it now exists:

The Washington State Constitution and state and federal law have created permanent funds which receive revenue from certain public lands. Those funds include as beneficiaries common schools, universities, normal schools, agricultural, and scientific purposes. Each fund makes investments to generate

income, however, these permanent funds have been constitutionally restricted from investing in stock or making any investments which could be construed as a lending of credit to a private party. In 1966 the voters approved the forty-fourth amendment to the state constitution removing that restriction for the permanent common school fund and permitting those funds to be invested as authorized by law. The other permanent funds, however, continue to have the original constitutional restrictions upon investments.

ject those funds to the same limitation as the permanent common school fund i.e., the Legislature would be authorized to determine what will be a proper investment of those funds.

### The effect of SJR 8212, if approved into law:

SJR 8212 would remove the constitutional restrictions on the investment of the public land permanent funds and sub-

## Statement for

### HELPS HIGHER EDUCATION

Our public universities, like the common schools, historically have benefited from trust funds created by the state constitution. These funds help support capital construction for all public education, kindergarten through graduate school.

When the funds were created, their investment was limited to specified, fixed security instruments, such as federal, state, county, municipal or school district bonds. To increase investment flexibility and potentially to improve returns on these funds, Washington voters have amended the Constitution three times: to enhance the Permanent Common School (K-12) Fund, state pension funds, and state industrial insurance funds.

### REDUCES TAXPAYER LIABILITY

SJR 8212 provides this same kind of investment flexibility for our public higher education trust funds which benefit the University of Washington, Washington State University, Central Washington University, Eastern Washington University and Western Washington University. It simply permits the state to invest balances in these funds "in any manner allowed by law," including investing in equity instruments, such as common stocks. This could both *improve the rate of return on these funds* and *reduce the need for more taxes or increased bonded indebtedness*.

### PROTECTS PUBLIC TRUST

SJR 8212 *does not require* investing higher education trust funds in stocks. It merely provides the opportunity to

do so, but within carefully prescribed laws established to safeguard all investments of public funds. This resolution authorizes wiser money management and permits expansion of our investment flexibility.

### VOTE YES ON SJR 8212; IT'S THE PRUDENT VOTE TO CAST

## Rebuttal of Statement against

Don't be misled by alarmist rhetoric. Since 1981, the State Investment Board has earned more than a 17 percent return on state pension and accident insurance funds by exercising -- within statutory safeguards -- investment flexibility identical to that which SJR 8212 allows for higher education trust funds.

SJR 8212 has overwhelming support from both political parties -- 97% of the Legislature voted for it.

Support higher education; reduce the drain on taxpayers.

*Vote YES on 8212!*

### Voters' Pamphlet Statement Prepared by:

MARCUS S. GASPARD, State Senator; E.G. "PAT" PATTERSON, State Senator; KEN JACOBSEN, State Representative.

Advisory Committee: ROBERT S. O'BRIEN, State Treasurer; BRIAN BOYLE, State Commissioner of Public Lands; LAWRENCE KENNEY, President, Washington State Labor Council, AFL-CIO; Delores Teutsch; Edwin McWilliams.

## Statement against

*VOTE NO* - The state should be prudent and sensible with public trust fund money.

### ENOUGH IS ENOUGH

Currently, other state trust fund money is invested in leveraged buyouts, venture capital, the stock market and real estate. This is gambling with our state money. Do not expose more public funds to these sophisticated and high risk investments. This is happening now - stop it by voting No.

### RISKY BUSINESS

Recently some of our state trust fund money was used to buy a Bellevue office park. The state of Washington should not be involved in commercial real estate. This is not what might happen if constitution limitations are removed, this is what is happening now with other trust fund money.

### FOUNDERS WERE RIGHT

State founders put restrictions on the use of the state's money and use of the state's credit. This change removes these prudent limitations. The opportunity for conflict of interest, corruption, middlemen, and losing great sums of money increase tenfold when restrictions are removed.

### STOP IT NOW

Right now the state invests trust fund money in leveraged buyouts, venture capital, and real estate. Close this "Pandora's Box" approach to investing - *VOTE NO*.

## Rebuttal of Statement for

Increasing the flexibility of trust fund investments will not benefit the taxpayer. In fact it will hurt the taxpayer if the investments turn into losses. This would create pressure to raise taxes to make up for the losses.

Leveraged buyouts and venture capital investments are investing in corporations and are potentially the lending of state credit. Protect school trust funds -- *VOTE NO*.

### Voters' Pamphlet Statement Prepared by:

MICHAEL HEAVEY, State Representative; JACK METCALF, State Senator.

Advisory Committee: WAYNE O. GAFFNEY, Mercer Island; JAMES L. GOBLE, Seattle; WILLIAM FINKBEINER, Kirkland; SIDNEY STARR, Bellevue.



# HOUSE JOINT RESOLUTION 4212

## PROPOSED CONSTITUTIONAL AMENDMENT

Note: The ballot title and explanatory statement were written by the Attorney General as required by law. The complete text of House Joint Resolution 4212 begins on page 17.

Vote cast by the 1987 Legislature on final passage:  
HOUSE: Yeas, 78; Nays, 20; Absent or not voting, 0.  
SENATE: Yeas, 33; Nays, 16; Absent or not voting, 0.

### Official Ballot Title:

Shall the State Constitution be amended so legislative representatives will be elected for four years and senators for six years?

### The law as it now exists:

All the members of the House of Representatives of the Washington State Legislature are now elected for two-year terms in elections occurring in even numbered years. The members of the Senate of the Washington State Legislature

are elected for four-year terms with approximately one-half of the senatorial seats up for election at each even year election.

### The effect of HJR 4212, if approved into law:

The members of the House of Representatives of the State Legislature would be elected for four-year terms. Approximately one-half of the membership of the House would be elected in each even year election. There are two representatives in each legislative district, so as a transitional measure in the 1988 election, the representative receiving the largest vote in the district would be elected for a four-year term and the other representative would have a two-year term. The legislative position with the initial two-year term would in the 1990 election become a four-year term.

The members of the Washington State Senate of the Legislature would be elected for six-year terms with approximately one-third elected at each election. The 1988 and 1990 elections would result in some senators being elected for four years and others for six years to establish a pattern which by 1992 would result in all senators being elected to six-year terms.

### Statement for

#### ARE LEGISLATORS DOING THE WORK THEY ARE ELECTED TO DO?

Immediately after each election state legislators begin fund-raising and planning for their next election. The current two-year terms for members of the House and four-year terms for state Senators give strong momentum to short-term popular positions which push real problems and their solutions to the future.

#### NEED FOR A CHANGE

Our state Constitution is a dynamic document that, with its many changes, reflects the changing views and needs of our state. One hundred years ago it made good sense to the drafters of our Constitution to set two- and four-year terms for our legislators. After all, they met once every two years for sixty days, probably approved about fifty new laws and then went home by horseback, steamboat and railroad for two years before they met again. Communication was slow and the demands created by public necessity were minimal.

Today, the Legislature meets every year, 105 days in odd years, 60 days in even years, and in numerous overtime sessions. Over 4,000 proposals for new laws are introduced every two years, and 400 to 500 new laws enacted. Our world has grown more complex and longer terms for legislators is the logical result of the more complex issues that must be addressed. This constitutional amendment would prohibit a member of the House of Representatives from running for the state Senate without first giving up their House seat, but would allow a representative to run for other offices without first giving up the House seat.

### Rebuttal of Statement against

Longer terms *will* actually make your legislator more effective. Your legislator can better consider the many problems faced; give them careful scrutiny and not be ramrodded into a hasty decision because of momentary political or lobbyist pressure.

A six-year term for your senator will match that of your U.S. Senator. A four-year term for your representative means more attention to your problems, less to fund-raising and campaigning.

Your vote *FOR* HJR 4212 will give you a more responsible and responsive legislator.

#### Voters' Pamphlet Statement Prepared by:

LARRY L. VOGNILD, State Senator; SIMEON R. "SIM" WILSON; State Representative; RUTH FISHER, State Representative.

Advisory Committee: ALAN BLUECHEL, State Senator; GEORGE L. SELLAR, State Senator; PAT SCOTT, State Representative; GEORGE W. WALK, State Representative.

### Statement against

The changes proposed in HJR 4212 are unnecessary and unwise. Lengthening the term of office for our legislators only would make state government more unyielding and less responsive to the will and needs of the people.

The length of our legislators' terms -- closely patterned on the length of congressional terms in office -- has been in effect for 100 years, and there is no valid reason to change it. Extending the duration of office by two years simply would make our elected representatives less accountable to the people of Washington State.

*Why?* Our citizen Legislature must maintain close ties with the electorate. The current system -- with two-year terms for the House of Representatives and four-year terms for the Senate -- requires constant communication between legislators and the public. The election process gives each voter the opportunity to hear regularly from his lawmakers and grade their performances. Limiting voters' opportunity to cast judgment on their lawmakers flies in the face of a democratic government.

Lengthening the span between elections would measurably weaken the voters' voice in government. It's true that election campaigns often are long, expensive and tiring -- but campaigns also are often the only chance many people have to see and visit with their legislators. Reducing the frequency of elections would curtail the communications that are so vital to a democratic, representative form of government.

Your vote against HJR 4212 will prevent a dilution of your voice in our state government.

### Rebuttal of Statement for

Long-term solutions to problems result from hard work by quality lawmakers -- not longer terms of office.

Yes, our world is growing more complex, but our ability to understand and deal with problems is growing too. The media help keep us well informed on governmental issues and actions. Extending lawmakers' terms won't make the legislative process more effective or easier.

If legislators are spending too much time electioneering, the solution is campaign reform, not longer terms.

For additional information, call (206) 352-4446.

#### Voters' Pamphlet Statement Prepared by:

STUART A. "STU" HALSAN, State Senator; JAMES E. WEST, State Senator; TOM BRISTOW, State Representative.

Advisory Committee: CHUCK SAUVAGE, Washington State Common Cause; C. MONTGOMERY "GUMMIE" JOHNSON, Port Ludlow; CARL MAXEY, Spokane; LAWRENCE KENNEY, President, Washington State Labor Council, AFL-CIO; JACKIE BATTSON, Bellingham.



# HOUSE JOINT RESOLUTION 4220

## PROPOSED CONSTITUTIONAL AMENDMENT

Note: The ballot title and explanatory statement were written by the Attorney General as required by law. The complete text of House Joint Resolution 4220 begins on page 17.

Vote cast by the 1987 Legislature on final passage:

HOUSE: Yeas, 86; Nays, 11; Absent or not voting, 1.

SENATE: Yeas, 33; Nays, 16; Absent or not voting, 0.

### Official Ballot Title:

Shall the constitution be amended to permit a 15 year state-wide special property tax levy exclusively for school construction purposes?

### The law as it now exists:

The state constitution limits tax levies upon real and personal property by the state and all taxing districts, except port districts and utility districts, in any one year to in the aggregate not more than one percent of true and fair value of such property. This constitutional limit on property taxation

can be exceeded by taxing districts only by securing voter approval as delineated in the state constitution.

the repeal of authorization to retire bonds from the interest on the permanent common school fund. This also eliminates certain language in the constitution which expired by its own terms at some past period and is now obsolete.

### The effect of HJR 4220, if approved into law:

The state would be authorized to impose a property tax in excess of to the current constitutional limit, at a rate not to exceed 35 cents per thousand dollars of assessed valuation adjusted to the state equalized value for a period of 15 years. The proceeds of that tax are to be used exclusively for school construction purposes.

Related provisions of the constitution would be altered to harmonize with the added language concerning a state property tax levy for school construction purposes, including

### Statement Against

#### GOOD INTENTIONS, BUT A BAD IDEA

Yes, we have a problem in funding school construction projects. *But while the problem is clear, the solution is not.* Increasing property taxes is the wrong way to solve this problem.

*Should we tamper with the Constitution?* No. Amending the state Constitution for 15 years is inappropriate. The Constitution should be a permanent document protecting Washington citizens. Short-term changes are unwise.

*Do you really believe this tax will be "temporary"?* No. Proponents of this property tax plan say it will last 15 years. . . they claim it will be "temporary." But just think about all the times supposedly "temporary" taxes ended up being made permanent.

*Should we again use property taxes as the easy way to get more money for government?* No. Already this year the Legislature raised the levy lid for school districts, allowing higher property tax rates. The Legislature also allowed libraries to seek local levies that would increase taxes further. Another significant increase in our property tax burden is the last thing we need.

*Should the state pre-empt local use of property taxes?* No. Property taxes are intended to fund local government activities . . . such as road maintenance, law enforcement, fire protection, emergency medical assistance, and so on. For the state to increase our property tax burden will make it harder for local governments to win approval of the levies they must have to operate effectively.

*We should reject this proposal and keep property taxes as a local option and preserve local control.*

### Rebuttal of Statement for

The problem of school construction funding is not new; it has been on the horizon for several years. *And a temporary constitutional amendment is not the answer.*

This *property tax increase* would require property taxpayers to pay for school construction projects throughout the state. . . *in addition to projects they are already paying for in their own district.*

*We need a better way to pay for necessary school construction. . . not just higher property tax rates.*

### Statement for

HJR 4220 is needed to assure adequate schools for our state. Public school construction is funded by a combination of local and state monies. On the average, the state supports about one-half of the cost of each construction project. The local school district voters provide the balance through property taxes or bond issues.

#### SCHOOL CONSTRUCTION FUNDS ARE INADEQUATE

For the past twenty years state support for school construction has been met through the sale of timber from trust lands. Three major factors make this level of construction support inadequate:

1. Statewide enrollment growth necessitates new classrooms.
2. The value of trust timber has declined 50 percent in the past four years.
3. Our existing school buildings are wearing out.

#### SCHOOL PROJECTS AWAIT STATE FUNDING

Projects representing \$300 million have secured the local share and are awaiting state funds. Some of these projects have been waiting since 1984 and without the passage of HJR 4220 they may still be waiting through the 1990's.

#### HJR 4220 WILL PROVIDE FOR OUR CHILDREN'S FUTURE

This constitutional amendment allows for a state property tax levy that will not exceed 35 cents per \$1000 of assessed value and will not be collected for longer than 15 years. The money would be used solely for school construction purposes. Projected revenue from the proposition

would fund approved projects on the waiting list within seven years. In addition, monies deposited into a permanent endowment will provide an ongoing source of funding for future school construction needs.

There are currently over 750,000 children in kindergarten through grade twelve. By 1999, enrollment will grow to over 900,000 students.

Our children deserve safe, healthful, and uncrowded schools.

### Rebuttal of Statement against

YES, HJR 4220! The opposition's argument is misleading. In politics, it is called "smoke and mirrors."

- HJR 4220 does not tamper with the Constitution.
- HJR 4220 will be directed by the voters to exist for 15 years. Period.
- Nobody likes increases in property taxes. But the longer it takes to fix schools, the more it will cost – pure and simple.
- HJR 4220 does not interfere with local levies. The opposition mixes apples and oranges. *Vote YES!*

For additional information, call (206) 448-7348.

#### Voters' Pamphlet Statement Prepared by:

ALBERT BAUER, State Senator; DANIEL K. GRIMM, State Representative.

Advisory Committee: BRUCE HOLLAND, State Representative; REN TAYLOR, State Representative; DR. FRANK B. BROUILLET, State Superintendent of Public Instruction; PHILIP B. SWAIN, State Board of Education; TERRY BERGESON, President, Washington Education Association.



## COMPLETE TEXT OF Referendum Bill 41

AN ACT Relating to the federal reserve system; creating new sections; and providing for submission of this act to a vote of the people.  
BE IT ENACTED BY THE LEGISLATURE OF THE STATE OF WASHINGTON:

**NEW SECTION.** Sec.1. (1) A sound money system is absolutely vital to a free people. Symptoms of an unsound money system abound: Budget deficits, recurring recession cycles, farm foreclosures, business bankruptcies, bank, savings and loan, and insurance company failures, trade deficits, and dramatic fluctuations in interest rates, inflation levels, and unemployment statistics. These represent a clear and present danger to the people and to the government of the state of Washington and the United States of America.

(2) The Federal Reserve Act of 1913, and other acts of Congress, purport to delegate the nation's monetary authority to the Federal Reserve System, with no oversight or control by any elected body or official. The Federal Reserve Board is assumed to have the power to create money and thus exercise absolute control over the economic activity of this nation, whereas the United States Constitution nowhere authorizes Congress to delegate such power.

(3) The Federal Reserve Act of 1913, and other acts of Congress, purport to delegate authority, without oversight or control, under which large, private United States multinational banks have made unrestricted loans all over the world which, now in danger of default, threaten the United States of America with a collapse of its whole banking structure.

**NEW SECTION.** Sec 2. It is hereby the declared intent of the state of Washington, and the counsel appointed by the legislature is hereby directed, to cause to be filed in the original jurisdiction of the supreme court of the United States: (1) An action challenging the constitutionality of the delegation to the federal reserve system of the power to create money, and thus the power to exercise absolute control over the economic activity of this nation, and (2) An action challenging the delegation of authority without oversight, under which large, private multinational banks have made unrestricted foreign loans which, if they default, threaten the United States of America with a collapse of its whole banking structure.

**NEW SECTION.** Sec. 3. This act shall be submitted to the people for their adoption and ratification, or rejection, at the next succeeding general election to be held in this state, in accordance with Article II, section 1 of the state Constitution, as amended, and the laws adopted to facilitate the operation thereof.

(a) Charge, collect, or attempt to collect for medical services provided to any patient eligible for medical insurance benefits for the aged and disabled under the federal medicare program, part B of Title XVIII of the federal social security act, any amount in excess of the reasonable charge for such services as determined under part B of Title XVIII of the federal social security act;

(b) Fail to enroll at the earliest possible time, or fail to continue, as a participating physician under the supplementary medical insurance benefits for the aged and disabled part of the federal medicare program, part B of Title XVIII of the federal social security act; and

(c) Fail to post in a conspicuous place in his or her place of business a summary of the provisions of this section in accordance with such rules adopted by the attorney general to assure that patients are given reasonable notice of their rights under this section.

(2) This section does not apply to a physician who certifies in writing to the attorney general of the state of Washington that he or she does not and will not provide medical services covered under the supplementary medical insurance benefits for the aged and disabled part B of the federal medicare program to persons eligible for such benefits except in emergency situations or when such treatment would otherwise be required by the standards of the profession.

(3) For the purposes of this section the terms used in this section shall be defined consistently with the definitions for such terms contained in Title XVIII of the federal social security act.

**NEW SECTION.** Sec.2. If any provision of this act or its application to any person or circumstance is held invalid, the remainder of the act or the application of the provision to other persons or circumstances is not affected.



## COMPLETE TEXT OF Senate Joint Resolution 8207

BE IT RESOLVED, BY THE SENATE AND HOUSE OF REPRESENTATIVES OF THE STATE OF WASHINGTON, IN LEGISLATIVE SESSION ASSEMBLED:

THAT, At the next general election to be held in this state there shall be submitted to the qualified voters of the state for their approval and ratification, or rejection, an amendment to Article IV, section 7 of the Constitution of the state of Washington to read as follows:

Article IV, section 7. The judge of any superior court may hold a superior court in any county at the request of the judge of the superior court thereof, and upon the request of the governor it shall be his duty to do so. A case in the superior court may be tried by a judge, pro tempore, who must be a member of the bar, agreed upon in writing by the parties litigant, or their attorneys of record, approved by the court and sworn to try the case. However, if a previously elected judge of the superior court retires leaving a pending case in which the judge has made discretionary rulings, the judge is entitled to hear the pending case as a judge pro tempore without any written agreement.

BE IT FURTHER RESOLVED, That the secretary of state shall cause notice of the foregoing constitutional amendment to be published at least four times during the four weeks next preceding the election in every legal newspaper in the state.



## COMPLETE TEXT OF Initiative Measure 92

AN ACT Relating to the consumer protection act; and adding a new section to chapter 19.86 RCW.

BE IT ENACTED BY THE PEOPLE OF THE STATE OF WASHINGTON:

**NEW SECTION.** Sec. 1. A new section is added to chapter 19.86 RCW to read as follows:

(1) It shall be an unfair or deceptive act or practice or unfair method of competition in the conduct of trade or commerce under RCW 19.86.020 for any physician to:



## COMPLETE TEXT OF Senate Joint Resolution 8212

BE IT RESOLVED, BY THE SENATE AND HOUSE OF REPRESENTATIVES OF THE STATE OF WASHINGTON, IN LEGISLATIVE SESSION ASSEMBLED:

THAT, At the next general election to be held in this state there shall be submitted to the qualified voters of the state for their approval and ratification, or rejection, an amendment to Article XVI, section 5 of the Constitution of the state of Washington to read as follows:

Article XVI, section 5. Notwithstanding the provisions of sections 5 and 7 of Article VIII and section 9 of Article XII or any other section or article of the Constitution of the state of Washington, the permanent common school fund and other public land permanent funds of this state may be invested as authorized by law.

BE IT FURTHER RESOLVED, That the secretary of state shall cause notice of the foregoing constitutional amendment to be published at least four times during the four weeks next preceding the election in every legal newspaper in the state.



## COMPLETE TEXT OF House Joint Resolution 4212

BE IT RESOLVED, BY THE SENATE AND HOUSE OF REPRESENTATIVES OF THE STATE OF WASHINGTON, IN LEGISLATIVE SESSION ASSEMBLED:

THAT, At the next general election to be held in this state there shall be submitted to the qualified voters of the state for their approval and ratification, or rejection, an amendment to Article II of the Constitution of the state of Washington by repealing section 4 thereof and amending Article II, section 5 and Article II, section 6 of the state Constitution to read as follows:

Article II, section 4. Section 4, Article II of the Constitution of the state of Washington is repealed.

Article II, section 5. ~~((The next election of the members of the house of representatives after the adoption of this Constitution shall be on the first Tuesday after the first Monday of November, eighteen hundred and ninety, and thereafter, members of the house of representatives shall be elected biennially and their term of office shall be two years; and each election shall be on the first Tuesday after the first Monday in November, unless otherwise changed by law.))~~ Members of the house of representatives shall be elected for terms of four years with as near to one-half of their number as is mathematically possible retiring every two years. At the general election to be held on the first Tuesday next succeeding the first Monday in November 1988, the candidate in each representative district who receives the greatest number of votes shall be elected for a term of four years and thereafter for a term of four years, and at the same election the winning candidate in each representative district who receives the second highest number of votes shall be elected for a term of two years and thereafter for a term of four years.

Elections of the members of the house of representatives shall be on the first Tuesday after the first Monday of November in each even-numbered year unless otherwise changed by law. Persons elected to the house of representatives shall serve four-year terms unless they resign or seek other legislative office.

Article II, section 6. ~~((After the first election))~~ The senators shall be elected by single districts of convenient and contiguous territory, ~~((at the same time and))~~ in the same manner as members of the house of representatives are required to be elected; and no representative district ~~((shall))~~ may be divided in the formation of a senatorial district. They shall be elected for ~~((the))~~ terms of ~~((four))~~ six years, ~~((one-half))~~ with as near to one-third of their number retiring every two years. The senatorial districts shall be numbered consecutively, and ~~((the senators chosen at the first election had by virtue of this Constitution, in odd-numbered districts, shall go out of office at the end of the first year, and the senators, elected in the even-numbered districts, shall go out of office at the end of the third year))~~ shall be divided into three groups: The first group to consist of every first district, the second to consist of every second district, and the third to consist of every third district. For those districts in which senators are to be elected in 1988 the term of office shall be four years for each district in the first and second groups and six years for each district in the third group; and thereafter in each district the term of office shall be six years. For those districts in which senators are to be elected in 1990, the term of office shall be four years for each district in the first group and six years for each district in the second and third groups; and thereafter in each district the term of office shall be six years.

BE IT FURTHER RESOLVED, That the secretary of state shall cause notice of the foregoing constitutional amendment to be published at least four times during the four weeks next preceding the election in every legal newspaper in the state.



## COMPLETE TEXT OF House Joint Resolution 4220

BE IT RESOLVED, BY THE SENATE AND HOUSE OF REPRESENTATIVES OF THE STATE OF WASHINGTON, IN LEGISLATIVE SESSION ASSEMBLED:

THAT, At the next general election to be held in this state there shall be submitted to the qualified voters of the state for their approval and ratification, or rejection, an amendment to Article IX, section 3 and an amendment to Article VII, section 2 of the Constitution of the state of Washington to read as follows:

Article IX, section 3. (1) The principal of the permanent common school fund as the same existed on June 30, 1965, and including any revenue dedicated to the fund from a state property tax shall remain permanent and irreducible.

(2) The ~~((said))~~ permanent common school fund shall consist of the principal amount ~~((thereof existing on June 30, 1965))~~ under subsection (1) of this section, and such additions thereto as may be derived after June 30, 1965, from the following named sources, to wit: Appropriations and donations by the state to this fund; donations and bequests by individuals to the state or public for common schools; the proceeds of lands and other property which revert to the state by escheat and forfeiture; the proceeds of all property granted to the state when the purpose of the grant is not specified, or is uncertain; funds accumulated in the treasury of the state for the disbursement of which provision has not been made by law; the proceeds of the sale of stone, minerals, or property other than timber

and other crops from school and state lands, other than those granted for specific purposes; all moneys received from persons appropriating stone, minerals or property other than timber and other crops from school and state lands other than those granted for specific purposes, and all moneys other than rental recovered from persons trespassing on said lands; five per centum of the proceeds of the sale of public lands lying within the state, which shall be sold by the United States subsequent to the admission of the state into the Union as approved by section 13 of the act of congress enabling the admission of the state into the Union; the principal of all funds arising from the sale of lands and other property which have been, and hereafter may be granted to the state for the support of common schools. The legislature may make further provisions for enlarging said fund.

(3) There is hereby established the common school construction fund to be used exclusively for the purpose of financing the construction of facilities for the common schools. The sources of said fund shall be: ~~((4))~~ (a) Those proceeds derived from the sale or appropriation of timber and other crops from school and state lands subsequent to June 30, 1965, other than those granted for specific purposes; ~~((2))~~ (b) the interest accruing on said permanent common school fund from and after July 1, 1967, together with all rentals and other revenues derived therefrom and from lands and other property devoted to the permanent common school fund from and after July 1, 1967; and ~~((3))~~ (c) such other sources as the legislature may direct. That portion of the common school construction fund derived from interest on the permanent common school fund may be used to retire ~~((such))~~ bonds ~~((as may be))~~ authorized by law prior to January 1, 1987, for the purpose of financing the construction of facilities for the common schools.

~~((The interest accruing on the permanent common school fund together with all rentals and other revenues accruing thereto pursuant to subsection (2) of this section during the period after the effective date of this amendment and prior to July 1, 1967, shall be exclusively applied to the current use of the common schools.))~~

(4) To the extent that the moneys in the common school construction fund are in excess of the amount necessary to allow fulfillment of the purpose of said fund, the excess shall be available for deposit to the credit of the permanent common school fund or available for the current use of the common schools, as the legislature may direct.

Article VII, section 2. Except as hereinafter provided and notwithstanding any other provision of this Constitution, the aggregate of all tax levies upon real and personal property by the state and all taxing districts now existing or hereafter created, shall not in any year exceed one per centum of the true and fair value of such property in money: PROVIDED, HOWEVER, That nothing herein shall prevent levies at the rates now provided by law by or for any port or public utility district. The term "taxing district" for the purposes of this section shall mean any political subdivision, municipal corporation, district, or other governmental agency authorized by law to levy, or have levied for it, ad valorem taxes on property, other than a port or public utility district. Such aggregate limitation or any specific limitation imposed by law in conformity therewith may be exceeded only

(a) By any taxing district when specifically authorized so to do by a majority of at least three-fifths of the electors thereof voting on the proposition to levy such additional tax submitted not more than twelve months prior to the date on which the proposed levy is to be made and not oftener than twice in such twelve month period, either

at a special election or at the regular election of such taxing district, at which election the number of persons voting "yes" on the proposition shall constitute three-fifths of a number equal to forty per centum of the total votes cast in such taxing district at the last preceding general election when the number of electors voting on the proposition does not exceed forty per centum of the total votes cast in such taxing district in the last preceding general election; or by a majority of at least three-fifths of the electors thereof voting on the proposition to levy when the number of electors voting on the proposition exceeds forty per centum of the total votes cast in such taxing district in the last preceding general election: PROVIDED, That notwithstanding any other provision of this Constitution, any proposition pursuant to this subsection to levy additional tax for the support of the common schools may provide such support for a two year period and any proposition to levy an additional tax to support the construction, modernization, or remodeling of school facilities may provide such support for a period not exceeding six years;

(b) By any taxing district otherwise authorized by law to issue general obligation bonds for capital purposes, for the sole purpose of making the required payments of principal and interest on general obligation bonds issued solely for capital purposes, other than the replacement of equipment, when authorized so to do by majority of at least three-fifths of the electors thereof voting on the proposition to issue such bonds and to pay the principal and interest thereon by an annual tax levy in excess of the limitation herein provided during the term of such bonds, submitted not oftener than twice in any calendar year, at an election held in the manner provided by law for bond elections in such taxing district, at which election the total number of persons voting on the proposition shall constitute not less than forty per centum of the total number of votes cast in such taxing district at the last preceding general election: PROVIDED, That any such taxing district shall have the right by vote of its governing body to refund any general obligation bonds of said district issued for capital purposes only, and to provide for the interest thereon and amortization thereof by annual levies in excess of the tax limitation provided for herein, AND PROVIDED FURTHER, That the provisions of this section shall also be subject to the limitations contained in Article VIII, Section 6, of this Constitution;

(c) By the state or any taxing district for the purpose of paying the principal or interest on general obligation bonds outstanding on December 6, 1934; or for the purpose of preventing the impairment of the obligation of a contract when ordered so to do by a court of last resort;

(d) By the state for a property tax at a rate not to exceed thirty-five cents per thousand dollars assessed valuation adjusted to the state equalized value, levied for a maximum of fifteen years and used exclusively for school construction purposes.

BE IT FURTHER RESOLVED, That the foregoing amendment shall be construed as a single amendment within the meaning of Article XXIII, section 1 of this Constitution.

The legislature finds that the changes contained in the foregoing amendment constitute a single integrated plan for funding common school capital projects. If the foregoing amendment is held to be separate amendments, this joint resolution shall be void in its entirety and shall be of no further force and effect; and

BE IT FURTHER RESOLVED, That the secretary of state shall cause notice of the foregoing constitutional amendment to be published at least four times during the four weeks next preceding the election in every legal newspaper in the state.



## BALLOT TITLE

### PROPOSITION NO. 1 REGIONAL HEALTH CARE CAPITAL IMPROVEMENTS BONDS-\$99,800,000

Shall King County, to finance Harborview Medical Center's trauma center and certain capital improvements at Harborview and Pacific Medical Centers, and the Health Department's Columbia, East, South, Southwest and Renton Clinics, as provided in King County Ordinance 8196, issue up to \$99,800,000 of unlimited tax general obligation bonds with a maximum term of 20 years, on which principal and interest shall be payable from annual property tax levies in excess of regular property tax levies?

## Explanatory Statement:

If approved by the voters, Proposition No. 1 would authorize King County to issue up to \$99,800,000 of unlimited tax general obligation bonds, maturing within 20 years, to finance all or part of the following regional health care capital improvement projects within King County:

(1) At Harborview Medical Center, expansion and consolidation of the emergency trauma center and other key diagnostic departments; expansion, improvement and relocation of patient and visitor services; and modernization, expansion and consolidation of in-patient and out-patient facilities.

(2) At Pacific Medical Center, structural repairs and/or additions to bring its Beacon Hill "Tower Building" into compliance with Seattle's seismic and other building codes.

(3) Construction of three new public health centers in Seattle, east King County and south King County, and expansion, remodeling and repairs to existing public health centers in Renton and southwest King County.

The maximum amounts of bond principal proceeds to be available to these projects shall be: Harborview - \$75,465,000; Pacific Medical Center - \$9,315,000; and public health centers - \$15,020,000.

Unless paid from other sources, both principal of and interest on the bonds would be paid from annual excess property tax levies upon all taxable property within King County, without limitation as to rate or amount.

To be approved, this proposition must receive "yes" votes from at least 60% of those voting on it, and the total number of persons voting on this proposition must equal at least 40% of those in King County who voted at the last general state election.

## Statement for

**SAVING LIVES:** Life-threatening injuries can strike anyone at anytime. For the more than 3,000 accident victims treated at Harborview each year, the difference between full recovery and a lifetime of impairment or death can be a matter of seconds. Harborview's trauma team, while nationally recognized, is forced to lose precious seconds because essential facilities — the emergency room, surgery, radiology, laboratories and the air ambulance heliport — are spread throughout the hospital. Blood test labs, for example, are a block and a half and two floors from the emergency room.

Proposition 1 would provide a modern, efficient Trauma Center at Harborview. Essential emergency services would be consolidated and readily available—making the difference for many accident victims whose lives hang in the balance.

**MEETING HEALTH CARE NEEDS IN OUR COMMUNITY:** Demands on our Health Department clinics to provide basic and preventative care cannot be met without Proposition 1. These clinics, located in communities with rapid population growth, are already straining to provide services to those most in need—especially children and seniors.

When low-income patients around the county need specialty medical care, they are referred by the community clinics to Pacific Medical Center. PMC must make structural improvements to keep these vital services available.

**A SMALL PRICE TO PAY:** Proposition 1 asks voters to commit only 11 cents per \$1,000 of assessed property value a year to these public health care facilities over the next 20 years.

**Vote yes on 1 — a small price to pay when it's about saving lives.**

## Rebuttal of statement against

Harborview is THE treatment facility for people from all over King County with the most serious, life-threatening injuries. **It must be modernized.**

Harborview is one of the few county hospitals that requires no operating subsidies. These improvements will keep Harborview self supporting. The Seattle Area Hospital Council endorses Proposition 1 because **it's cost effective.**

SOS is also wrong about Pacific Medical Center. If the funds aren't committed to PMC, the bonds won't be issued.

## Statement against

"...the United States often has worse health than Britain despite spending three times as much per head on health care."  
(*London Economist* 8/22/87, page 47)

The Shareholders of Seattle (SOS) urge you to vote NO on Proposition 1, the Regional Health Care Capital Improvements Project.

The crisis of medical care here is a crisis of costs. Why? Because we in the United States are spending progressively more for medical **buildings** than we are for medical **services**. That is precisely the situation here. We're being asked to allocate \$100 million for capital projects financed by a bond issue, with not a single penny going for operating or maintaining the subsequent improvements. With interest, this bond issue will cost the taxpayer a minimum of \$200 million. **The effect is higher medical costs for all whether one pays the bill directly or through insurance.**

Problems that SOS is asking you to consider are:

1. The Harborview Long Range Capital Improvement Plan gives no non-capital alternatives. There is no documented data to show that the proposed capital expenditures will attain the efficiencies claimed.

2. The Pacific Medical Center (PMC) is managed by a Public Development Authority. As such, the funding for PMC is conditional (see Ordinance Sec. 4). Passage of this measure does not necessarily mean that PMC will get the funds. If it doesn't, the ordinance does not say what will happen to the money. **Once again, we're being asked to sign a blank check.**

## Rebuttal of statement for

**Vote NO on Proposition 1.**

**Harborview:** Alleged "inefficiency" is a management problem certainly not requiring a bond issue.

**Pacific Medical Center:** PMC has been cutting back on health care. Why??

Medical costs have increased because facilities have expanded beyond the ability to staff, equip and maintain them. Developmental costs will be passed on to patients. How can more lives be saved and health care provided if people can't afford the services?

Vote NO on 1.



# King County Assessor



**Jeanette  
BERLEEN  
Republican**

Jeanette Berleen has been a real estate appraiser for three and one half years, an accountant and lead budget analyst, and has served laudably in our Washington State House of Representatives. She has been a member of the Burien, White Center, and West Seattle Chambers of Commerce, Highline United Methodist Church, and Citizens to Save Puget Sound.

Jeanette Berleen was born on November 2, 1952. She attended Highline Community College and the University of Washington, where she received a Bachelors degree in Business Administration in 1976. Jeanette Berleen has experience in management, budgeting, appraisal, and working with people.

I plan to make the Assessor's Office more accessible, informative, and efficient. The office can be made more efficient by making property tax appeals' decisions good for more than just one year. Also, by assigning appraisal crews to specific areas, they will become more familiar with the neighborhoods they appraise.

The office can be more informative by letting people know about exemptions they are eligible for in a timely fashion. Then, people will not be taken advantage of by paying more than their fair share of property taxes. For example, taxpayers can get an exemption for added value of remodeling on single family residences, up to a limit, by filing a form with the Assessor's office. I will work with the building department of King County and all city building departments to have the proper forms automatically issued with all residential remodeling building permits.

Renters, you have a stake in property taxes. Your rent will probably increase by as much as any new taxes paid by the owner. The Assessor's office can be more informative by letting people know how much bonds and levies are going to increase property taxes, before they vote on them. Then the decision on whether or not to pass these issues is up to an even more informed electorate, both owners and renters.

The office of Assessor can be made more accessible by opening a public information counter at the existing Eastside Assessor's Office, and by working with libraries to have property tax information stations located in them.

You have a right to know about tax exemptions and why your property is appraised the way it is. As Assessor, I will make sure property is appraised fairly, and I will accommodate the needs of all citizens.

Thank you for your interest, concern, and your vote.

CAMPAIGN MAILING ADDRESS: P.O. Box 48214, Seattle, WA 98148 PHONE NUMBER: 623-6063



**Ruthe  
RIDDER  
Democrat**

Ruthe Ridder is seeking reelection as King County Assessor. In 1983 she defeated three-term incumbent Harley Hoppe. Ruthe has received high marks during her first term. Headlines such as, *HERE'S AN ASSESSOR WHO HELPS THE TAXPAYER* (Seattle P.I. 2/23/86) have been typical.

Ruthe was born June 13, 1929; Bachelor's, Psychology, University of Washington; served 9 years State Senate, Chair Labor Committee, member Ways/Means, Rules and Legislative Budget Committees; Vice President Washington State Association of County Assessors, member Rainier Chamber of Commerce and League of Women Voters.

*Ruthe has won each election she's campaigned in.*

King County Assessor Ruthe Ridder keeps her word.

Four years ago, she promised to run an open, professional and non-political Department of Assessments. Ruthe Ridder has kept these promises and more.

Ruthe has quietly and efficiently brought fairness to the assessment process. Under Ruthe Ridder, the valuation process is handled by a professional staff without politics getting in the way. There are no more scandals. No private detectives following Department employees. Every property is treated equally.

In keeping her word to open the office, Ruthe has: *Initiated taxpayer assistance meetings throughout King County which have been very well attended. Over 3,000 taxpayers have received personal help in understanding their property tax system.*

*Distributed over 10,000 copies of "Tax Facts", a free booklet on Department programs, including information on how to obtain property tax exemptions and appeal property values.*

*Made it easy for the public to get information from the Assessor's Office on any property.*

*Made comparable sales data available on computer terminals.*

Ruthe has accomplished all of this while holding to a no growth budget. She looks to the next 4 years to sustain the role of your independent Assessor to protect and enhance property tax fairness.

Ruthe has reached out to property owners who need assistance and are eligible for property tax relief.

*She initiated a program of immediately informing taxpayers whose property has been damaged of their right to property tax relief.*

*She successfully sought legislation to increase interest paid to taxpayers who receive refunds.*

*She developed an aggressive outreach program to inform seniors, the disabled and home remodelers of tax-exemption programs.*

Ruthe's honesty and integrity have earned her enormous respect. On November 3rd, your continued support of Ruthe Ridder will keep the office open, accessible and fair.

CAMPAIGN MAILING ADDRESS: P.O. Box 2369, Seattle, WA 98111 PHONE NUMBER: 467-6293

# King County Council District No. 6



**Bruce  
LAING  
Republican**

Born August 17, 1932 in Seattle. Bachelor of Arts in English Literature, Seattle University; Master of Urban Planning, University of Washington. Charter Member American Institute of Certified Planners. Seventeen years experience as professional planner with engineering, planning and development firms and with the U.S. Department of Housing and Urban Development. Chief Zoning and Subdivision Examiner for King County, 1970-79. Served on Active Duty with the U.S. Navy as a Naval Flight Officer. Retired from Naval Reserve with Rank of Captain. Married to Brigid (Flood) Laing. Three children: Jim, Colleen and Greg.

Serving second term, King County Councilman.

For the past eight years I have had the honor of serving as your King County Councilman. I have worked hard for you and have found the job both challenging and satisfying. I'd like your vote for my re-election to the County Council.

During these past eight years I have also served on the Metro Council and on the Executive Board of the Puget Sound Council of Governments. My fellow elected officials have honored me by electing me to the following chairmanships: Chairman King County Council; Chairman King Subregional Council; Chairman Metro Water Quality Committee; Chairman Joint Metro/PSCOG Multi-Corridor Steering Committee.

I have sponsored many County ordinances and motions which benefit our area, including: Purchase of 1750 acres as part of the Cougar Mountain Regional Wildlands Park; Purchase of the Beaver Lake Natural Resource Park; Placement of the Issaquah Skyport bond issue on the ballot; Mitigation of impacts from the Cedar Hills Landfill; Development of the Maplewood Heights Park and school walkway system; Development of Petrovitsky Park; Widening of Petrovitsky Road, Coal Creek Parkway, and East Lake Sammamish Parkway.

I have also sponsored legislation on significant County-wide issues, including: Publication of a King County Voters Pamphlet (which you are now reading); Preparation of siting plans for garbage disposal facilities, including energy resource recovery plants; Establishment of a Surface Water Management Utility.

There are many challenging issues facing the County which I would like to address in the next four years, such as: The adoption of a County Human Services Plan; Modernization of the County Zoning and Subdivision Codes; Capping of toxicant hot spots in Lake Washington and Puget Sound; Increasing transit service between suburban centers; Planning for a light-rail system.

I appreciate your past support. Now I ask your support for the future.

CAMPAIGN MAILING ADDRESS: 13430 S.E. 43rd Street, Bellevue, WA 98006 PHONE NUMBER: 747-1369

**Democrat - No Candidate Filed**

**Robert W.  
WINSOR  
(No Statement Submitted)**

**King County Court of Appeals  
Div. 1, Dist. 1 Judge, Pos. 1**





## Port Of Seattle Commissioner District No. 3



**Paige  
MILLER**

Paige Miller practiced business law in Seattle for several years before joining the Seattle City Council staff as a legislative assistant and policy analyst. As President of the Queen Anne Community Council, Paige led in negotiating a cooperative agreement between the Port and nearby neighborhoods which permitted moderate expansion of Terminal 91 while protecting the neighborhoods from harmful impacts. Paige also served on the committee which developed the Port's long-range harbor plan.

Born January 5, 1949, Paige is a graduate of Brown University and Yale Law School. She and her husband Bruce Johnson, have two children, Marta and Winslow.

The Port of Seattle brings 80,000 jobs to King County. That is the Port's mission. Some of those jobs are on the waterfront, some are at SeaTac. Many more are related to Port activity. If the Port fails, we all suffer.

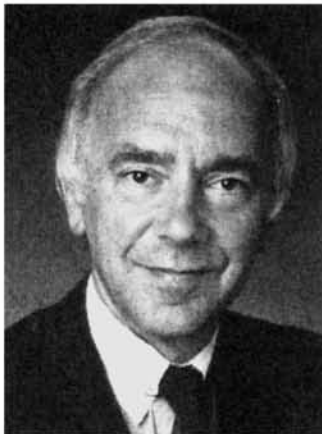
The Port needs effective new leadership. It needs someone who can listen, someone who can work with people, and someone who can get the job done. I began working on Port issues six years ago as a community leader, helping the Port and my neighborhood to resolve a bitter dispute over a proposed development project at Terminal 91. Later, I served on the committee that developed the Port's long-range strategy for the harbor's cargo-handling facilities. Through those experiences I learned the Port's business and worked with the people, inside and outside the Port, who are involved in its daily activities.

I want to use my knowledge of the Port and my experience in working with people in the community to help the Port work on some important problems.

The Port needs to be more open and accountable to the public. It needs to improve its customer service and customer relations or we will lose important customers to our competitors. The Port must be open and fair in hiring and contracting. And it must move forward with three important economic development projects - a cruiseship terminal, an international trade center and expanded moorage for the fishing fleet.

Also, the Port must take steps immediately to reduce the level of airplane noise in our neighborhoods. Noise can be reduced through enforcement of existing regulations, and through new incentives and regulations which push for the use of quieter, new-generation airplanes at SeaTac. The Port needs working, caring leadership. I ask for your vote on November 3rd.

CAMPAIGN MAILING ADDRESS: 711 West Kinnear Place, Seattle, WA 98119 PHONE NUMBER: 281-8674



**George  
KARGIANIS**

George Kargianis, a successful businessperson and attorney (practicing 34 years), is a senior partner in his downtown Seattle law firm, and resides with his family in Bellevue where he served as Bellevue School Board President. Kargianis, former Washington Utilities and Transportation Commission Chief Examiner, is an expert on maritime, transportation, and international trade issues, an appointed mediator, and experienced negotiator.

A native Washingtonian and University of Washington Law School graduate, Kargianis is a former Washington State Bar Association Governor, a fellow of the prestigious American College of Trial Lawyers, and sits on numerous arts and community boards and commissions.

I bring to the Port experience, knowledge and commitment to public service. Shortly, the Port will make a number of critical policy decisions which will affect our economy, neighborhoods, and quality of life for decades to come.

*FIRST* and foremost, the Port Commission must be a body capable of projecting a positive image. As a mediator, negotiator and consensus builder, I have the background to be the catalyst for harmony and consensus between the commission and staff.

*SECOND*, the Port must be a better neighbor, that means it has to be a better listener. *THIRD*, many of our neighborhoods, and rightfully so, are concerned about the noise from air traffic and Port facilities. The Port needs to ensure noise abatement policies are developed and utilized.

*FOURTH*, Fisherman's terminal is the home Port for our two billion dollar per year fishing industry. We must meet the needs of this industry with facilities, goods, and services. *FIFTH*, Northwest ports need to develop more interport cooperation on a regional basis to compete successfully against out of state ports.

*SIXTH*, we need to better market the Port. *SEVENTH*, the Port must continue to play a key role in the economic development of King County.

I am running because I believe I offer what the Port and our citizens need from a Commissioner: an experienced steady hand, a proven mediator and negotiator, an authority on issues of major concern to the Port, a successful business-person and a respected community leader. I have worked with and represented both business and labor.

If I can answer any questions please contact me at 4700 Columbia Center, Seattle 98104 or 624-5370. As your new Port Commissioner, I will work hard to accomplish the goals I've set out above. I would appreciate your vote. Thank you.

CAMPAIGN MAILING ADDRESS: 47th Floor, Columbia Center, Seattle, WA 98104-7010 PHONE NUMBER: 624-5370



**Don  
DAVIDSON**

Don, age 48, has lived in Bellevue since 1967 when he established his practice in family dentistry. Named 1987's "Citizen Dentist of the Year" by the Washington State Dental Association is one recognition of his vast community service which has included: Member, Bellevue City Council; Trustee, Overlake Hospital; Former President, Bellevue Chamber of Commerce; Coach, Boys' & Girls' Clubs; Commissioner, Boy Scouts; Fiscal Committee, Bellevue School District. Don, Sue and three children reside in Woodridge.

Finding solutions to challenges facing Bellevue has been the hallmark on Don Davidson's service as the incumbent member of the City Council in Position #1.

He has provided expertise to the Council in the area of Finance, and is well known for his independent thinking and reasoned approach to the making of policy to safeguard the high quality of life enjoyed by the residents of Bellevue. He is accessible, open to new ideas, listens carefully to input from all sources, and makes decisions in a forthright manner in recognition of needs of his constituency, the citizens of Bellevue.

Don has provided leadership in the formation of the 5-Year Financial Forecast. He encouraged the development of the Management Performance Audit Program which will provide information for proper control of the Operating Budget. He continues in a leadership role in both the Capital Improvement Program Budget and Operational Budget process.

He supports the Neighborhood Traffic Control Program to make our neighborhood streets safer, and the Overlake Transportation Study to correct congestion at Interstate 520 - 148th corridor.

CAMPAIGN MAILING ADDRESS: 11201 S.E. 8th, #152, Bellevue, WA 98004 PHONE NUMBER: 455-4770



**Jim  
KEEFFE**

34 year Bellevue resident; 14 continuous years' community service; City Council, 4 years, East Bellevue Community Council, 10 years (4 terms as chairman). Boeing: market/airline analyst, sales engineer, regional sales manager, C.A.D. Retired USAF officer, pilot commander, staff officer. Aerial combat in Korea and Germany (WWII P.O.W.). USAF and R.O.T.C. instructor, 7 years; United Air Lines pilot; degrees from UCLA and BCC, honor society member; nominated for JC's TOYM award; married, 6 children.

Quality of life for the residents should be the Council's number one priority. My goals continue to be increased police service, residential neighborhood protection and enhancement, traffic solutions, additional bus transit, lean budgeting, (the rates of growth of the city's budget and staffing have far outstripped population growth), efficiency of city services, enforcement of city codes, completion of the State mandated elements of the Comprehensive Plan, a Code of Ethics for the council members, open city government conducted publicly (executive sessions are not mandated by state law), public referendums on big ticket items such as the Bellevue dam (2+ million spent to date), the proposed Supersonics arena and convention center (1/2 million spent to date), a partial moratorium on new downtown commercial and office construction until a workable solution to the city's traffic problems has been achieved, and a commuter tax to help pay for the enormous increases in services resulting from Bellevue's rapid growth.

I need your support to achieve these goals.



**Jean  
CARPENTER**

A public relations consultant with a Master's degree in Communication, Jean Carpenter has impressive credentials for City Council. City of Bellevue and community experience includes: Park Board Commissioner; Human Services Advisory Committee; Government Structure Committee; Bond Issue Campaign Manager; Secretary, Bellevue Art Museum Board; Youth Eastside Services Board; Episcopal Diocesan and Parish Commissions; Somerset Community Association; Vice President, American Association of University Women.

Married, she and Scott have two children; Jean's birthdate is 1/29/45.

Whether we are businessmen and women concerned with economic vitality, or parents concerned with neighborhoods in which our children are growing up, or retirees concerned about safe, convenient amenities, we want to be a community that provides the best quality of life possible.

To succeed in this goal we must find ways to make our differences work for the good of all. How does this happen?

It comes from a shared commitment . . . a commitment to listen, a commitment to learn, and a commitment to reason; and, from our elected officials, a commitment to lead in an open and responsible manner.

Bellevue is at a crossroads. We love our small town qualities, but we're faced with large, urban challenges. Our City Council must lead by becoming more of a policy body, reinstating the committee system and concentrating on quality basic city services.

My primary concerns are: assuring affordable government (knowing full costs before we enter a project), preserving our unique character (city in a park meaning more than a slogan), and providing a responsive government.

CAMPAIGN MAILING ADDRESS: 11034 S.E. 28th Place, Bellevue, WA 98004 PHONE NUMBER: 641-7265



**Tom  
HANSEN**

A Seattle native, Tom Hansen grew up on Beacon Hill, graduated from Cleveland High School, and attended Washington State University.

After four years in the U.S. Navy Medical Corps, Tom spent ten years in sales and management in the surgical instrument field; then he joined the franchise industry in sales development, ownership, and consulting.

Tom has served the City of Bellevue as Mayor Pro-Tem and City Councilman for the last four years.

During four years as Bellevue's Mayor Pro-Tem and City Councilman, Tom Hansen has demonstrated the skills of an *effective elected official*. He is *responsive, open-minded, fair, and decisive*. With his leadership, the council has made large strides toward making Bellevue a "model city".

Tom led the effort to start the largest program of park acquisition and development in the city's history, a giant step towards the plan for a "city within a park".

In most of the hottest issues facing the city, Tom was put in the position of casting the swing vote and his decisions have proven to be on target and in the best interests of the entire community. Through his *independent* position, he represents the vast majority of hard-working, taxpaying, concerned Bellevue citizens.

Tom Hansen has shown the ability to study the facts and make decisions, *good decisions*. He has earned the citizens trust and confidence. Now, with four years of *experience*, he will continue to do a good job. Let's *re-elect Tom Hansen* to the Bellevue City Council.

CAMPAIGN MAILING ADDRESS: P.O. Box 402, Bellevue, WA 98009 PHONE NUMBER: 881-3027



# City Of Bellevue Council

P  
O  
S  
I  
T  
I  
O  
N  
3



**Terry  
LUKENS**

Terry Lukens was born on November 28, 1943, obtained his undergraduate degree from Brown University, and studied at the Columbia University Graduate School of Business. After service as a United States Air Force officer, he received his law degree from Rutgers University in 1973. Following a judicial clerkship with the Oregon Court of Appeals, he moved to Bellevue in 1974 and joined Karr, Tuttle law firm. He is in charge of the firm's Bellevue office.

For many years I have served Bellevue in youth, church, and charitable activities; in the leadership of the South Bellevue Citizens Advisory Committee; as a member of the city's Human Services Advisory Committee; and, currently, as chairman of the Bellevue Planning Commission. This community involvement has given me the opportunity to gain the needed skills, knowledge, and the right kind of experience to serve on the Bellevue City Council as our city continues to grow and mature.

As a member of your city council my priorities will be:

1. Create neighborhood forums to provide regular and meaningful citizen input into city decisions.
2. Provide a thoughtful council voice that respects all points of view on the tough issues facing Bellevue as it matures.
3. Manage traffic congestion by using the most innovative techniques now being developed while preventing spillover into residential areas.
4. Promote both a strong economy and quality residential neighborhoods.
5. Expand Bellevue's park system, especially waterfront parks, pedestrian trails, and playing fields.

CAMPAIGN MAILING ADDRESS: 2543 103rd Avenue S.E., Bellevue, WA 98004 PHONE NUMBER: 455-4377



**Margo  
WAID**

Entrepreneur. Publisher of *BelleVue*, . . . The Eastside Guide since 1976. Past professional experience: Press Aide, U.S. Congressman, Washington D.C.; Press Liaison, Alaska Court System; Capitol Hill Liaison for Westinghouse; Public Relations, Children's Hospital, D.C.; Speechwriter for U.S. Senators & Congressmen at Library of Congress, D.C.; Courts Consultant, Dept. of Architecture, University of Illinois. Education: High School Valedictorian; B.A. from University of Washington (Scholarship Recipient). Accepted U.W. Law School.

Naturally beautiful with an aware population, Bellevue can be a cosmopolitan city with beautiful architecture while maintaining its green, park-like setting.

As an entrepreneur successfully running a sole-proprietor magazine, I bring a flair for creative problem solving, meeting challenges cleverly with conservative fiscal policies and minimum staff. My multi-faceted experience in public relations, courts, health care and the legislature, provide a well-rounded background.

I support a Convention Center (funded by the hotel room tax) for it will bring clean money into the area and provide additional tax revenue by increasing business in retail shops and provide entry level jobs for young people . . . without increasing traffic congestion. Downtown Bellevue needs more parking space. I support a performing arts center . . . all great civilizations have supported the arts . . . and most importantly: a world-class youth gym & activity center with a built-in drug and alcohol information and evaluation program; a public marina for visiting boats; affordable housing for families with young children (a certain % of 3+ bedroom units in multiple family dwellings).

P  
O  
S  
I  
T  
I  
O  
N  
4



**Don  
MacKENZIE**

Born in New York, August 12, 1929. Graduated, Civil Engineering, 1950, Dublin University. Employed by The Boeing Company as engineer since 1961.

Civic Activities include: Lake Hills Annexation Committee; I-90/Eastgate Subarea Plan Advisory Committee; Past President, Spirtridge Community Club; Past President, Bellevue Coalition of Community Clubs; Republican Precinct Committeeman/State Convention Delegate.

Organization memberships: Seattle Professional Engineering Employees Association (SPEEA); American Association of Retired Persons (AARP); Knights of Columbus; St. Louise Parish.

My platform for the next four years will be similar to that of my last four years on the Bellevue City Council: To represent ALL of the citizens of Bellevue.

A major concern of mine is that government must practice fiscal restraint and learn to operate within existing revenues without raising taxes.

The City of Bellevue's budget has increased by 50% over the last five years requiring increases in taxes and rates. I have opposed these increases and will continue to do so, where necessary, in the future.

Another concern of mine is the quality of public services. Our traffic problems continue to grow each year while our street system is deteriorating. This is the result of inadequate planning. The City needs a realistic plan for traffic circulation and a long-range plan for maintenance of our streets. These are goals I have pursued in the past four years and which are about to come to fruition.

We are privileged to live in a beautiful city and region.

Help me to keep it that way!

CAMPAIGN MAILING ADDRESS: 2553 156th Avenue S.E., Bellevue, WA 98008 PHONE NUMBER: 643-4840



**Richard  
RISING**

Richard Rising, born March 1, 1930, has lived in Bellevue since 1960. He graduated in Forest Management from the University of Washington.

Management experience includes General Manager of Roberts Rents Office Furniture in Bellevue (current), V.P./General Manager, Reichhold Chemicals and a Northwest Regional Manager, Simpson Timber Company.

Married 23 years with three children, he retired as a Captain in the Naval Reserve, after serving 30-years and commanding a NRF Destroyer Escort.

A deep interest in protecting Bellevue's quality of life, its people and future development draw me toward the Bellevue City Council. I believe this community deserves leadership with the drive, experience and integrity to make effective, impartial decisions. Involvement in the Eastside community expanded during the 1970's when my wife Nancy Rising served on the Bellevue City Council.

Currently, active in the Bellevue Chamber of Commerce, Bellevue Rotary and the Municipal League.

Issues: Expanded relationships with local governments regarding storm drainage, water supply, environmental protection, transportation and traffic resolution.

Excessive funding for vague studies of multi-purpose stadium/convention center facility. Studies should be focused and limited. The absolute necessity for the Bellevue City Council to reflect the same high qualities of the community.

Continued focus on Human Service programs responding to the decrease in Federal assistance, especially youth and seniors.

Increased cooperation between Council and Bellevue School District.

I am dedicated to issues involving quality. Quality of human spaces. Quality of neighborhoods. Quality of future directions.

Anything else is simply not enough!

CAMPAIGN MAILING ADDRESS: P.O. Box 1822, Bellevue, WA 98009 PHONE NUMBER: 462-7368



## Explanatory Statement:

### BALLOT TITLE

#### PROPOSITION NO. 1 CITY HALL REGULAR PROPERTY TAX LEVY (Limited Lid Lift)

To finance the acquisition and/or construction of a new city hall, shall the City of Mercer Island increase its regular property tax levies in the years 1988 through 2007 by a rate not to exceed \$.41 per thousand of assessed valuation (to total approximately \$3.13 per thousand of assessed valuation in 1988) and in the year 2008 reduce regular property tax levies to the amount otherwise provided by law, to provide up to \$4,979,000 plus interest on such amount for up to 20 years, all as specified in Ordinance No. B-55?

By statute, the State Legislature has imposed a ceiling on the amount of regular property taxes which may be levied by the City each year. Regardless of the amount of any increase in assessed valuation of property, property taxes may not be increased beyond the limitation imposed by statute without a vote of the people.

The State Legislature has provided a means by which regular property taxes may be levied in an amount exceeding the statutory ceiling if such levy is approved by a majority of the voters voting on a proposition to increase the property tax levy. The proposition placed before the voters may limit the period for which the increased levy will be made and/or limit the purpose for which the increased levy will be made.

The City Council has found that the current city offices, which are located in rented facilities in the Shorewood apartment complex, are inadequate to serve the present and projected needs of the City. The effect of Proposition No. 1 if approved will be to authorize an increase in regular property tax levies in the years 1988 through 2007 in an amount which would finance the acquisition and/or construction of a new City Hall. Both the period of the increased levy and the purpose of the levy will be limited.

Property taxes levied in 2008 for collection in 2009 and in later years will be reduced to the amount otherwise provided by law as if authorization to exceed the levy ceiling had not been approved.

### Statement for

#### DOES MERCER ISLAND NEED A NEW CITY HALL? YES!

The city has operated from "temporary" offices in the Shorewood Apartments for 27 years. The space is cramped, inadequate, and inefficient, with offices in kitchens and storage in bathrooms. Our police department lacks adequate security for its communications system and storage of evidence. The single holding cell for prisoners forces the detention of men, women, and juveniles in the same cell. Furthermore, a city hall at Shorewood violates the city's land use regulations prohibiting offices in residential zones. A 40-year-old apartment building is a poor substitute for today's municipal office needs.

#### CAN WE AFFORD A NEW CITY HALL? YES!

The City of Mercer Island has total available bonding capacity of \$92 million. A new city hall facility will require only up to \$5 million. Cost to the taxpayer at most would be 41¢ per \$1,000 assessed valuation, or about \$61 annually for a \$150,000 house.

#### WHAT WILL A NEW CITY HALL ACHIEVE FOR MERCER ISLAND?

City hall belongs in an established center of activity where the community can meet, transact its business and make decisions. As responsible citizens, we can and should provide decent working conditions for our public employees and police department. We have an exceptionally fine community, where quality of life is treasured. A city hall structure is a statement of local self appraisal. It's time to project our community image with a proper city hall.

### Statement against

No statement submitted.



## Explanatory Statement:

### BALLOT TITLE

#### PROPOSITION NO. 2 CITY HALL SITE SELECTION

If Proposition No. 1 passes, would you prefer to locate the Mercer Island City Hall at the 9611 property, for which facility the taxpayers will pay up to \$4,979,000, plus interest, or at the Mercerdale property, for which facility the taxpayers will pay up to \$4,390,000, plus interest, as more fully described in Ordinance No. B-55?

This proposition presents to the voters an opportunity to select the site for location of City Hall.

If Proposition No. 1 authorizing financing for acquisition and/or construction of a new City Hall passes, Proposition No. 2 will permit the voters to choose between two sites for the location of City Hall; (1) the property located at 9611 S.E. 36th Street, commonly referred to as the "9611 Property" or (2) the property located in the 3300 block of 78th Ave. S.E., commonly referred to as "Mercerdale Field".

The City Council will abide by the results of the vote subject to applicable environmental review and provided that the acquisition and/or construction does not become undesirable because of substantially unforeseen and changed conditions.

### Statement for Mercerdale Site

#### \$\$\$ AND SENSE

Mercerdale is city-owned, zoned for public use. The city **DOES NOT OWN** the old 9611 building. The taxpayers would have to buy it for \$2.7 million; extensive rehabilitation plus additional costs total approximately \$5,000,000. Don't buy a site when we have one. Sell "9611" to the private sector - at least \$2.7 MILLION NEW DOLLARS for our schools and increased tax revenue for our city.

#### MORE FOR LESS AT MERCERDALE

\$4.4 million builds a **NEW** city hall designed for municipal needs. \$5,000,000 buys an old remodeled building in an inconvenient location. **SAVE \$1,133,640** - the real difference in cost over the 20 year term of the bonds. Don't spend an extra million for a fixer upper when we can build new!

#### GRIDLOCK ON GALLAGHER HILL ROAD

At peak hours, the increased traffic on the narrow, winding, steep Gallagher Hill Road to and from the old 9611 building would approach gridlock. The road will be a bottleneck even with the planned improvements to Gallagher Hill. The Center's streets are **ALREADY** designed and engineered to absorb additional traffic.

#### LET'S SAVE MERCERDALE FOR THE PUBLIC

Placing a public building on public land insures keeping Mercerdale in the public domain. City hall will use only 1/5th of the site. The remaining 80% can be retained for:

- playing fields
- green space
- children's play area
- recycling center
- public plaza
- Bicentennial Park

The "highest and best use" of Mercerdale is public. Don't allow Mercerdale to be sold. Save dollars . . . it makes sense.

### Rebuttal of statement for 9611

**DON'T BE MISLED.** Some proponents of 9611 insist on placing a dollar value on Mercerdale. Why? The only reason to consider land value of Mercerdale is if it were to be rezoned and sold.

**LET'S LOCATE CITY HALL ON MERCERDALE.** The building, with parking, requires less than three of the almost 13 acres, assuring playfields and ample greenspace for all of us.

**MOST IMPORTANT,** city hall will anchor for public use this priceless property.

STATEMENT PREPARED BY: BILL BRAND, LINDA JACKMAN, SUE SHERWOOD

### Statement for 9611 Site

The remodeled 9611 Building will provide an up to date, first class City Hall with new heating, ventilation, windows, and sprinklers. The building's 36,000 square feet provide enough space for separate City Council and District Court facilities, and additional rentable space. Today's dollars buy the expansion space the City has forecast for the next twenty years. The remodeled cost is \$135 per square foot, including land acquisition, as compared to \$157, not including land, for Mercerdale.

Our school district will immediately receive \$2,700,000 to invest in our children's future. If bought by a private developer, schools would not receive more. Selling costs would be substantial. Delay in selling could be long term.

The site is currently zoned for office use. There are no residences immediately adjacent to the building. 9611 will have excellent access to the freeway and bus service.

The proximity of 9611 Building to the City's recently built Maintenance/Utilities Facility provides substantial savings—360 trips per month by public safety vehicles alone.

The building exists now in a usable condition. It can be remodeled and occupied much sooner than a new building, generating additional savings.

The 9611 Building provides an efficient municipal facility—not a ground breaking for a future more costly development on Mercerdale. Voting for 9611 retains our playfields and preserves the character of our Island.

The future is now, the building exists, the costs are known. Visit the 9611 Building and see what a fine City Hall it will be.

### Rebuttal of statement for Mercerdale

Don't be misled.

Total costs for a modern 9611 Building will not exceed \$5,000,000 including land.

The cost of City estimated future expansion of the smaller Mercerdale building will more than offset implied savings.

Traffic on Gallagher Hill will be no problem. The completed I-90 plan addresses adequate traffic flow. Fewer employees will occupy 9611 as City Hall than when leased by the State or if developed commercially.

Preserve Mercerdale.

More for less at 9611.

STATEMENT PREPARED BY: JAMES AITKEN, REID MORGAN, ROBERT ORR



**Jim  
HORN**

Served last twelve years on the Mercer Island City Council. Twenty-five years of Aerospace Management experience on a variety of airplane, space, and defense programs for the Boeing Aerospace Company. National Vice President for the Technical Marketing Society of America. Director of the Mercer Island Lions Club. Board of Trustees for Mercer Island VFW. Born August 31, 1930. BS in Mechanical Engineering from the University of Illinois. Engineering graduate studies at Southern Methodist University.

I have enjoyed serving my community for the past twelve years. I am pleased with accomplishments during my council service which include establishment of Mercer Island harbor lines, new fire trucks, expanded park system and improved utilities. Several unresolved issues will shape our Island's future and I believe that my continued service will be of benefit.

It seems that the dirt, noise, and traffic inconvenience from I-90 have been with us forever. Several years remain before completion in 1992. Continuity of leadership is important to ensure that I-90 continues to have features and amenities important to Mercer Island as design and construction is completed.

Our Central Business District (CBD) plan needs revision. I believe that the primary purpose of the CBD is to serve the Island residents. Development should not be so ambitious that it overshadows our residential community.

Mercer Island is one of the most desirable living areas in the Puget Sound basin. If re-elected, I will continue to work toward keeping it that way. I would appreciate your vote in the November election.

CAMPAIGN MAILING ADDRESS: 9507 S.E. 61st Place, Mercer Island, WA 98040 PHONE NUMBER: 232-HORN or 232-2347

**UNOPPOSED**



**Fred  
JARRETT**

I have lived on Mercer Island for 25 years and am a graduate of Mercer Island High, Washington State University (BA Finance) and Seattle University (MBA Finance). I served as a lieutenant in the Air Force and joined the Boeing Company in 1974. I am currently employed as a manager in the development of business computing systems for Boeing's commercial airplane company. I have two sons, Aric, 7 and Keith, 5.

I am running for re-election because I want to use the experience and knowledge I've gained on the Council to provide continuity and leadership for the challenges of the next four years.

I have served eight years on the Council, the last four as Mayor. I have chaired the Council's I-90 Steering Committee, the City's principal policy group for I-90. I have also represented the City on the Metro Council, served as president of the King County's Suburban City Association (the largest regional association of Cities in the Region), and chaired a regional committee studying the double taxation of city residents to pay for regional services, such as marine patrol.

The '80's have seen great changes on Mercer Island. We have the new I-90 cutting across our north end, creating new challenges for the short term, and opportunities and pressures for the future. The City has a new city manager, will implement a new land use plan for the CBD and begin the process of moving to a new city hall.

CAMPAIGN MAILING ADDRESS: 3424 77th Place S.E., Mercer Island, WA 98040 PHONE NUMBER: 232-5327

**UNOPPOSED**



# City of Mercer Island Council

P  
O  
S  
I  
T  
I  
O  
N  
3



**Elliot  
NEWMAN**

Mr. Newman was born on November 24, 1941 and graduated from both Penn State and MIT with degrees in Meteorology. He is Vice President of a Seattle based environmental and engineering consulting firm. For over 23 years, he has been involved in the environmental consulting field. His career has evolved from research and consulting to general management and finance. He is married and the father of two Mercer High School graduates currently attending college.

As we approach the 1990's, Mercer Island faces a variety of challenges. As a result of its location and size, it cannot escape the impacts of a growing metropolitan Seattle/King County area and the completion of the I-90 project. Our city government must be ready to respond. Uncontrolled and unplanned development could seriously alter our Island's character, whereas an extreme "no growth" posture could result in lost opportunity to improve our Central Business District without a tax impact. With these growth pressures and the natural maturing process of the Island we will also face vital questions of infrastructure and maintenance of quality city services. We need representation on the City Council that combines a knowledge of environmental issues, transportation and economic impacts, fiscal management and community beliefs with strong leadership, decision making and communication skills. I believe my credentials as an environmental professional, fiscal and strategic planner, communicator, business manager, and involved citizen of Mercer Island will enable me to provide a broad-based and positive contribution to the actions of the Council.

CAMPAIGN MAILING ADDRESS: 8525 S.E. 79th Place, Mercer Island, WA 98040 PHONE NUMBER: 232-6780

**UNOPPOSED**

P  
O  
S  
I  
T  
I  
O  
N  
4

**Cleveland  
ANSCHELL**

Born in Chicago, Illinois, on September 10, 1925. Graduated from Queen Anne High School, Seattle. Military service, U.S. Army Intelligence, 1944-1947. Obtained B.A., University of Washington, Far Eastern Studies. Obtained M.A., Harvard University, Government and Economics. Employed as Survey Statistician, U.S. Bureau of the Census; Market Research Supervisor, the Boeing Company; Consultant, two Seattle-area consulting firms. Employed at Rainier Bank, since 1969. Currently Manager of Economic Research.

I have previously served two terms on the Mercer Island City Council, including two years as Mayor, in 1962-1969. I have also served two terms on the Mercer Island School Board, and seven years on the City's Planning Commission.

I am running for election to the City Council at this time because of three principal concerns. First, I would like to see questions of land use, planning, and zoning on Mercer Island resolved more in harmony with needs and desires of Island residents; I have not been satisfied with recent trends in this regard. Second, I would like to see more vigorous representation of Island residents directly affected by impacts of the current I-90 construction. Third, I would like to see Mercer Island take a leadership position in helping to resolve regional questions of transportation, water supply, waste disposal, and pollution control through its membership in various regional agencies.

I believe that my professional and civic experience would be of substantial benefit to the Council over the next four years.

CAMPAIGN MAILING ADDRESS: P.O. Box 1605, Mercer Island, WA 98040



**Roy F.  
SIMPERMAN**

Born on October 18, 1940, Roy Simperman has resided continuously on Mercer Island for twenty-two years. He received his Bachelor of Arts degree in mathematics; his Master of Science degree in physics; and his Master of Business Administration from UW.

Mr. Simperman is currently chairman and chief executive officer of Electronic Engineering and Manufacturing, Inc., a local stereo component manufacturer. His professional and managerial experience spans two decades with both Weyerhaeuser and Boeing.

Local government on Mercer Island consists of a city manager and a city council. While the city manager is the chief executive of the city, the city council acts as the primary policy making body. Thus, the council must direct its deliberations to the long term or strategic issues and problems that confront the city and its residents.

Council members must be capable of establishing solid objectives on which to base policy. They must be experienced and knowledgeable decision makers and problem solvers. They must be leaders possessing sound judgement.

My combination of education and experience has provided me with a large reservoir of these skills.

There is not a dearth of problems. Our CBD plans must contain objectives which allow an environment for the healthy and prosperous economic activities of our retail base. The average age of our citizens is increasing. We must address the long term issues of the housing of senior citizens. We must undertake a thorough needs assessment, formulate solid objectives and take certain action.

CAMPAIGN MAILING ADDRESS: 5609 80th Avenue S.E., Mercer Island, WA 98040 PHONE NUMBER: 232-6549



M  
A  
Y  
O  
R



**Doreen  
MARCHIONE**

Doreen Marchione is completing her first term as the Mayor of Redmond. She previously served on the City Council for 4 1/2 years. A graduate of Seattle University with a degree in Sociology, she received their Public Service Award in 1986. Currently Mayor Marchione is the President of the Suburban Cities Association and is active in King County 2000, United Way and the METRO Council. Born 11-06-38, Marchione is married and has four sons.

The challenge of managing growth while preserving the quality of life that residents expect is one reason I am seeking re-election as Mayor of Redmond. I enjoy the responsibility of administering the city and believe that my activities have resulted in the high level of governmental services that the people of Redmond deserve.

Under my direction we have developed the city's first Capital Improvement Program, established a per capita funding base for human services, completed long-range planning for water supply and are near completion of a comprehensive plan for Redmond's downtown.

We have the opportunity to make something good happen in our future. We can have comparison retail shopping, downtown redevelopment, improved roads, 60 acres of open space to be enjoyed by all our citizens, and sales tax revenues to support police, fire, park, and other citizen needs. My campaign theme is, "Let's keep a good thing going." I look forward to working with the people of Redmond to meet the challenges of our future.

CAMPAIGN MAILING ADDRESS: P.O. Box 73, Redmond, WA 98073 PHONE NUMBER: 885-6131



**Fred  
MEITZER**

City Councilman Fred Meitzer. Born 8-30-31. Married 36 years to Northwest artist Frances; Redmond resident and Newport High School English teacher since 1966; former Assistant Professor of Speech and Director of Theater, University of Minnesota, Duluth; professional television experience, including writing and producing for KCTS, Seattle; Bachelor and Master of Arts degrees in Speech and English from Kent State; PhD. in Theater History, Dramatic Literature and Television Production from Ohio State.

In the next four years, Redmond city government should provide:

- a transportation system that prevents neighborhood streets from becoming arterials and allows for either safe and swift by-pass of downtown or easy access to it and rational movement within;
- leadership to develop an identity or focus that would integrate and unify the existing downtown without a regional shopping center on the golf course;
- incentives for property owners to merge interests and build facilities for new enterprises that will enhance that identity in order to attract people looking for restaurants, theatres, specialty shop courts like Gilman Village, exclusive shopping districts like Rodeo Drive, and free-standing department stores or a scaled-down shopping mall in the existing downtown;
- encouragement for people to live downtown by allowing multiple use development (like river-view senior apartments above the Ben Franklin store just two blocks from the new senior center) that would create additional income from underused sites and give downtown business a core of reliable customers.

CAMPAIGN MAILING ADDRESS: P.O. Box 2788, Redmond, WA 98073-2788 PHONE NUMBER: 885-0152

## City of Redmond Council



P  
O  
S  
I  
T  
I  
O  
N  
  
1

**Arnold  
TOMAC**

Candidate did not submit a statement or photo.

**UNOPPOSED**



# City of Redmond Council

P  
O  
S  
I  
T  
I  
O  
N  
  
2



**Margaret  
DOMAN**

A Junior High teacher by profession, Margaret Doman has an extensive background in public and community service activities. Born in 1946, she has a Degree in History from Willamette University; has done graduate studies in Political Science, English and Education. Doman served on the Redmond Planning Commission and was elected to the City Council in 1983. She is also currently active in the Puget Sound Council of Governments and the Eastside Human Services Council.

I will continue to be an independent, analytical voice for community interests, willing to work with all groups. I will work to strengthen the City Council as an effective policy-setting body, emphasizing long range financial and community planning.

I believe that Redmond can be enhanced through managed, quality growth. Environmental quality and business need not conflict. Greenspace and aesthetics are vital to a successful community and therefore can facilitate an expanding tax base. Redmond should seek an expanded park and open space program.

Redmond's downtown needs to become economically viable for business, provide shopping convenience, and be a community focal point. I support a shopping center, provided it compliments the community as a whole. The *THOUGHTFUL* completion of a comprehensive Downtown Plan is mandatory for downtown re-vitalization.

The City has an increasing role to play in the planning and funding of human services. This is essential to a healthy community. Redmond has major traffic problems, and needs short and long range solutions. I will continue to work toward this goal.

CAMPAIGN MAILING ADDRESS: 2104 180th Court N.E., Redmond, WA 98052 PHONE NUMBER: 747-5871

**UNOPPOSED**

P  
O  
S  
I  
T  
I  
O  
N  
  
3



**Christine T.  
HIMES**

Born-April 6, 1929 Washington, D.C. Presently employed Eddie Bauer, Redmond. Served as Mayor of Redmond, 1980-84, City Council 1977-79. In that capacity I was a voting member of Metro, President of Suburban Mayors. On Legislative Committee for Association of Washington Cities, appointed by Mayor Royer to the Finance, Administration Committee of National League of Cities. Received Golden Acorn award from Lake Washington School District PTSA. Attended University of Maryland. Married, 5 children, 7 grandchildren.

I love the City of Redmond and have worked in the community for over 20 years. Since serving as Redmond's Mayor from 1980-84 and before that, the City Council, I have first hand knowledge of our City. I chaired the Bicentennial for Redmond and put together the Historic Walking Tour of "Old Downtown". I would work to preserve the historical aspects of Redmond and blend them into the suburban and urban character of our rapidly growing city.

I have heard citizens saying they are concerned about traffic, their neighborhoods, the one way couplet, the size of our new shopping center, taxes, the integration of downtown businesses and other issues. I do not know all the answers to these complex problems, but I will listen to people and work for a consensus approach to solve these concerns. I have proven leadership and administrative skills, and offer knowledge and experience to the voters. My election will bring strength to the leadership of Redmond.

CAMPAIGN MAILING ADDRESS: 17439 N.E. 116th Street, Redmond, WA 98052 PHONE NUMBER: 885-2679



**Richard  
COLE**

Redmond residents since 1979, Nancy and I have four daughters. A CPA, I have extensive professional experience in all aspects of finance as well as small business and public safety backgrounds. I hold graduate degrees in finance and accounting. As a Planning Commissioner for four years and current chairman, I have demonstrated a commitment to make Redmond a better place to live. I have been active in several community and professional organizations. Born 4/24/41.

My record demonstrates a commitment to preserve residential neighborhoods and protect them from intrusion by businesses and large multi-family developments. As a councilmember, I will support policies that stop development which threatens existing single-family neighborhoods.

On the council, I will promote policies that enhance the viability of downtown. As a Planning Commissioner, I have worked to improve the business climate and guarantee development of a *QUALITY* shopping center. A thriving downtown provides the tax base and revenue that Redmond needs to maintain existing services. Your taxes *WILL NOT* increase because of the shopping center. As proposed it *WILL* provide revenues that substantially exceed the city's cost.

I proposed the concept that will result in half of the shopping center site being preserved as open space. Redmond will get a *FREE* 25 acre downtown park.

I believe with the completion of funded traffic improvements and new streets provided by developers, traffic will be manageable. I will continue serving Redmond with positive leadership, dedicated to effectively managing your resources and preserving our quality of life.

CAMPAIGN MAILING ADDRESS: 11205 165th Court N.E., Redmond, WA 98052 PHONE NUMBER: 881-2129



**Bob  
ASHWORTH**

Born 1-9-45, real estate broker, graduated with BS Business. A business owner in downtown Redmond for 10 years. Active in various community groups such as, Sunrise Kiwanis, Jaycees, Redmond Baseball Assoc., Derby Days, Chamber of Commerce. Chaired such events as Haunted House, Trade show, Round Up, Etc. Broad based constituency.

The issues are so complex that 175 words does not give the opportunity to the voters to really know my position on any subject. I am available to meet with any citizen or group to discuss the needs of Redmond.

**CAMPAIGN MAILING ADDRESS: 16603 N.E. 108th Street, Redmond, WA 98052 PHONE NUMBER: 885-1771**



**Rosemarie  
IVES**

Redmond resident since 1980; husband, Jonathan; son, Gregory. Born and educated (B.A., M.S.) in Connecticut. Publicity Manager, Bothell downtown revitalization project; Money Management/Investments Instructor; former Public Relations/Information Officer and Consultant, Teacher.

Redmond Planning Commissioner, 1983-present (Chairperson, 1986-87; Economic Development Sub-Committee; Liaison, Redmond Chamber of Commerce); Precinct Caucus Training Workshops Coordinator; American Association of University Women National Public Policy Committee; Redmond High-Physio Control Partnership; PTSA.

Redmond needs a council that works hard because there's a lot of important work to be done. Taking tough stands on what is right and best for Redmond, applying knowledge and experience in assuring effective local government, demonstrating sensitivity and common sense, listening to ideas and concerns, and actively soliciting views—that's my commitment and pledge.

There are critical issues before the City of Redmond. The challenges of the future will demand flexible and creative responses. At the heart of each and every issue is planning—planning that masterfully guides Redmond's growth and maintains the quality of life and the level of services we have come to expect.

My candidacy is based upon a proven record as a planning commissioner that reflects sufficient study and understanding of issues, diverse and extensive experiences with both residential and business sectors, and the dedication to serve the people of Redmond.

You can contact me at 881-5587 or write to 16020 NE 98th Street.

**REMEMBER . . . YOUR VOICE AND VOTE COUNT WITH ME, WITH REDMOND!**

**CAMPAIGN MAILING ADDRESS: 16020 N.E. 98th Street, Redmond, WA 98052 PHONE NUMBER: 881-5587**

## Mercer Island School District No. 400 Director



**Rodney L.  
HEARNE**

Rodney L. Hearne was born in Seattle in 1942. He attended McGilvra, Meany, and Lakeside School in Seattle, graduating in 1960. College years were spent in California, with undergraduate work at Occidental and graduate work at Cal State, Los Angeles. Rod is currently Vice President of Benj. Franklin Leasing, a subsidiary of Benj. Franklin Saving and Loan. He has lived on Mercer Island for 20 years with his wife Jill and two children.

My motivation for School Board Membership is a matter of stewardship. My long involvement with the Mercer Island community and the Fiscal Advisory Committee to the School Board gives me the knowledge and experience to be an effective board member. School volunteer activities have ranged from major preschool association work to ski school chairmanship and fund raising for the Mercer Island schools foundation. I have 8 years as a member of the Fiscal Advisory Committee to the School Board. The Mercer Island school district is one of the best in the state but faces challenges caused by restricted levy capacity and declining enrollment. My goal as a prospective school board member is to work with our fine board and staff to continue to provide the best quality public education available.

In addition it is necessary to work with our legislators in Olympia to alleviate problems suffered by small and declining enrollment districts. We are fortunate to have a fine staff and excellent leadership; we, as a community must support and extend this excellence with our volunteer commitment.

Fiscal responsibility, academic integrity, student self-sufficiency are the goals I will work for in my term as Mercer Island School Member.



**Christopher  
SOELLING**

Christopher Soelling is a native of the Pacific Northwest and has lived for 11 years in the Seattle area. Mercer Island residents since 1986, Soelling and his wife, Gail, have two children approaching school age.

Soelling is an attorney with the Seattle firm of Short Cressman & Burgess, where he practices commercial litigation. He is a 1977 graduate of the University of Washington and graduated from Cornell University Law School in 1981.

I am a product of public schools and value the education and experience they provided. My goal as a school board member is to help the district maximize the educational opportunities and human enrichment that we can provide the children of Mercer Island.

Other than the above goal, I have no specific agenda or preconceived notions of how our schools should be managed. Instead, I have a broad background of experience in problem solving to bring to the position. As a lawyer, I am accustomed to solving difficult problems by learning as much about the problem as possible and then proposing and implementing a solution that resolves the problem to the satisfaction of all involved. I am accustomed to group decision making, having served for the last three years as one of nine arbitrators to a consumer dispute resolution board.

I am prepared to commit the time needed to meet the responsibilities of a school board member, and would enjoy the opportunity to help Mercer Island maintain and enhance its tradition of excellence in schools.

**CAMPAIGN MAILING ADDRESS: 2760 60 SE Mercer Island, WA 98040 PHONE NUMBER: 682-3333**



# Mercer Island School District No. 400

## Director

P  
O  
S  
I  
T  
I  
O  
N  
2



**Tina  
COHEN**

Cohen is a community activist and volunteer, now serving as Vice President of the School Board. She received a B.A. (Spanish) from the University of Washington, and will soon receive a Masters Degree in Public Administration from Seattle University. Cohen has been an advocate for public education for ten years as founder of the Mercer Island Legislative Network, PTA Council Legislative Representative, and a member of the Washington State School Directors' Association Legislative Committee.

"During the past four years I have seen numerous changes in our schools: a new superintendent was hired, student population continued to decline, and the budget was cut. I finally see some light at the end of this long, dark tunnel: the sixth grade has become part of the middle school; the legislature has finally provided some relief from the unrealistic 10% levy lid; the high school will begin the next phase of its comprehensive study; and, the elementary program will be thoroughly examined in the next two years.

I see the next four years as full of challenges and opportunities: we still have surplus property. The high school will still lose students; how will this continued decline affect program and personnel? I am confident that my experience as a board member for the past four years will contribute to the success of the next four years."

CAMPAIGN MAILING ADDRESS: 6536 80th Southeast Mercer Island, WA 98040 PHONE NUMBER: 232-5017

**UNOPPOSED**

P  
O  
S  
I  
T  
I  
O  
N  
3



**Mary Anne  
KNOLL**

I was born on April 7, 1947. I received a Bachelor's Degree from the University of Washington in Speech and Education in 1969 and taught elementary school on Mercer Island. I received a Master's Degree from Seattle Pacific University in Marriage and Family Therapy in 1982 and was a counselor for Eastside Community Mental Health Service and Presbyterian Counseling Service. I am married and have a ninth grade daughter and a fifth grade son.

The four years which I have served on the Mercer Island School District Board of Directors have been extremely interesting, rewarding and challenging. Some of the achievements which have been accomplished during my service on the Board include: the hiring of a new Superintendent, an increase in staff and community involvement in decision-making, the strengthening of City-School communications, major decisions regarding district properties, an administrative reorganization, and the adoption of goals which continued to strengthen instructional programs while addressing declining enrollment and budget reductions. I have a strong commitment to public education and a willingness to be open and to take the time to listen to those involved before making a decision. I believe a high quality public education for all students can be achieved through the committed and cooperative efforts of the school board, administration, staff, students, and parents. The policies and goals which the school board adopts must reflect the educational needs of the students, as well as budgetary and legislative issues.

CAMPAIGN MAILING ADDRESS: 6051 78th Ave. SE Mercer Island, WA 98040 PHONE NUMBER: 232-7704

**UNOPPOSED**

# Renton School District No. 403

## Director



D  
I  
S  
T  
R  
I  
C  
T  
  
1



**Margarita  
PRENTICE**

Born February 22, 1931. Occupation: Director, Nursing, DePaul-Mt. St. Vincent Nursing Center. Education: Phoenix Union H.S., and Phoenix College, Phoenix, Arizona 1949; Youngstown University, Youngstown, Ohio 1950; St. Joseph's Hospital School of Nursing, Phoenix, Arizona 1951-1954; University of Washington 1966-1968. "PULSE" National Nurses Award 1971; King County Nurse of the Year 1972. 1st Vice President-Washington State Nurses Association 2 terms; 2nd Vice Chair-King County Democratic Central Committee.

A 29 year resident of Skyway, Margarita Prentice has served on the Renton School Board since March 1986. A long-time community activist, Margarita served as member of school Levy Committees and during the 1970's when the area was severely affected by economic recession.

Margarita was a member of the National Democratic Platform Committee in 1984, the first Registered Nurse ever elected to serve in that capacity, and attended the National Democratic Conference in 1982. Margarita Prentice served as Local Unit Chairperson of Valley Medical Center, successfully leading the nurses in achieving economic parity.

Margarita is Congressional District Representative for WSNA and represents the School Boards of Washington on the Coalition on Teen-Age Pregnancy. Endorsed by the King County Women's Political Caucus and 11th District Democrats, Margarita Prentice believes that education must be relevant for the world in which young people will live with attention to socio-economic changes. She is concerned with the development of the educational philosophy of the district and with the values we demonstrate to our children.

**CAMPAIGN MAILING ADDRESS: 6225 South Langston Road, Seattle, WA 98178 PHONE NUMBER: 772-6480**



**Joy  
POFF**

Joy, a Renton native and a concerned parent, has been involved in Renton Schools since 1973, when her children started school. Joy is active in Renton Schools as a tutor, classroom aide and volunteer. She served Renton as President PTA Council, President Talbot Hill PTA, board Vice President Renton PTA Council. Joy has received PTA's Outstanding Service and Golden Acorn Awards.

Joy has been active in Renton Schools serving on the Special Education Advisory Committee, District General Instruction Committee and the 1986 Levy Committee. When elected to the Renton School Board Joy will work hard for better communication between administrators, teachers and the community, with more timely input on issues that impact the community and schools. The issues that face our schools need an involved, informed, and active School Board. Joy's priorities are dedication to positive and progressive programs, reduction of class size, increasing the level of educational excellence, while maintaining financial prudence.

Joy's commitment: "We must recognize that improving communication between the school district and the community is necessary to maintain a quality education for all children in the Renton School District. As a concerned citizen, PTA member and classroom volunteer, I have worked toward this goal. As a member of the School Board, I will continue my commitment to improving and maintaining the quality education our future generation needs and deserves."

D  
I  
S  
T  
R  
I  
C  
T  
  
3



**Donald T.  
HAMMOND**

Donald T. Hammond, born October 16, 1946. Pastor of United Christian Church, Renton, since 1980. Currently President of Fairwood West Homeowner's Association, member of city of Renton Board of Ethics and Puget Sound Disciples Housing Board of Directors. Past member of Board of Directors of Northwest Regional Christian Church and the Renton Citizens Advisory Committee on Family Life Curriculum. Education: BA, University of Idaho; Master of Divinity, Christian Theological Seminary.

Children are our most valuable resource. Public education must make opportunities available for every child to prepare for tomorrow.

Issues of concern to me are classroom size, impending teacher shortages and minority concerns, like Southeast Asians with special language needs. Teachers' salaries and benefits should represent the value of teachers' contributions to society. Maintaining the high quality of our district's education will be my primary consideration concerning school closures. I firmly believe religious education is the responsibility of organized religious bodies, not the public school system. I support programs for the gifted, special education, drug and alcohol education, and vocational training.

Children may be our hope for the future, but for now, we are the hope of our children. My commitment as a Board member will be to the quality education of the children of the Renton school district.



**Ken  
HOBEN**

Born April 30, 1933 and married for 31 years, I have lived in Renton for 14 years. Our two children obtained most of their K-12 education here. I have been active in Scouts, church, PTA, Renton Chemical People, and was Renton Elks' 1986 Citizen of the Year. I have been an internal auditor for 3 years; earlier I was a computer programmer-analyst. I have Bachelor of Business Administration and Master of Arts (in Economics) degrees.

I consider educating our children as the most important undertaking that we do as a community. Without a community's interest in and support for its schools, both the schools and the community suffer. Broader participation in setting goals, selecting appropriate activities, planning, and evaluating should be a top priority.

I want to promote and achieve excellent education in our schools, within the bounds of our willingness and ability to fund. We should identify and prioritize our district's strengths and weaknesses, so we may maintain or improve what we do well, and remedy our problem areas.

Our students should want to learn. This requires that they be healthy, free from disruptive personal problems, and sense encouragement to strive and excel.

We must have competent, motivated, and effective teachers. We should attract and retain good people, maintaining and upgrading their skills. In turn, good pay and a good teaching environment are essential.

We must increase community support for the job our schools are doing. I want to see Renton excited, in a positive way, about its schools.



## Renton School District No. 403 Director

D  
I  
S  
T  
R  
I  
C  
T  
4



**Nemesio D.  
DOMINGO**

The candidate, born in 1947, has a bachelor's degree in philosophy and math and attended two years' graduate school at the U.W. He has been a teaching intern in the Seattle School District and an affirmative action officer for the State's Department of Social and Health Services. He is now a heavy equipment mechanic for METRO. The candidate has been involved in Asian/Pacific community affairs, Northwest labor issues and the American Friends Service Committee.

Renton's schools reflect a school district and a community in transition. The district has had a good educational record but the population is changing and parents and teachers are seeking accountability and input to face the present and future needs of children in our schools.

The Renton community wants to restore its confidence in the school board as a caretaker of the balanced educational enterprise which represents parents, teachers, staff and the business community. I plan to take steps to restore openness in the district and to renew trust in public education.

We must deal effectively with issues such as school closures and quality of gifted and special education programs if Renton is to avoid falling into the trap of big city schools.

Through my experience in community organizations, in PTA's and a District-wide advisory committee, I have gathered information and pledge to gain maximum input in forming policy decisions.

I have four children in Renton schools and care deeply about the Renton community. Public education and our schools must be a number one priority.

CAMPAIGN MAILING ADDRESS: 12250 80th Avenue South, Seattle, WA 98178 PHONE NUMBER: 772-4131



**Robert  
STOWERS**

Born in Seattle, 1952. Education: Sealth H.S.; Shoreline Community College, AA, 1973; Washington State University, BA, 1975, MA, 1977. Occupation: Financial Manager of the Finance and Visitors Services, Seattle Aquarium. Association: Washington State University, Education Network Representative (Renton area); Seattle Management Association; Financial Secretary, Church of Christ, Holgate Street. Accomplishments: 1980 U.S. Presidential Convention, Delegate; 1984 U.S. Presidential Convention, Delegate; 1974 Washington State Legislative Intern, Education Committee.

A resident for 10 years, I have two daughters attending Renton Schools. My experience in public administration, auditing, budgeting, development education, and work for WSU Education Network and the State Legislature are strong qualifications.

I am concerned that open participation of parents has been stymied by lack of open communication between the Renton School District and parents. Parents need to be involved in important decisions on issues such as drug abuse, suicide, the drop out problem and discipline.

I am also concerned about our fair share of state mandated funds on an annual basis. A budget philosophy that is too conservative can have a negative impact on programs, facilities and teacher salaries. A budget balance that continues to grow from year to year can mean our share of annual funds from the state is shrinking.

Well maintained schools, healthy curriculums for children and vocational training programs for adults will mean a healthy education. A healthy, educated community is a vibrant economic community.

Let's keep our community strong. Vote for STOWERS.

CAMPAIGN MAILING ADDRESS: 11802 76th South, Seattle, WA 98178 PHONE NUMBER: 772-2107



## Bellevue School District No. 405 Director

D  
I  
S  
T  
R  
I  
C  
T  
1



**Malcolm (Mac)  
DOUGLAS**

Resident of Bellevue since 1960 and is 32 years old. Attended and graduated from Bellevue Schools. Douglas graduated from University of Puget Sound (BA, School of Business). Married with three children, he is employed as an insurance broker in Bellevue. He is also currently active as a board member and coach for the Bellevue Boys and Girls Club as well as a youth advisor and teacher at a local church.

The Bellevue School District has maintained a high level of educational opportunities for its students. With the District facing continued cutbacks in the general fund, I will strive to continue quality and continuity of education both inside and outside of the classroom.

Decentralization of decision making is in the early stages of implementation. I support the concepts of bringing decision making closer to the classroom, however, clear objectives as well as training for parents and staff must be used in the implementation of this program to achieve the District's goals of improved educational experiences for all students.

Bellevue has changed tremendously since I graduated from High School in 1973. The way we teach kids today has also changed. The Bellevue Schools must continue to find new and more effective ways to educate their youth in order to better prepare them for life in the 21st century.

Our schools are one of our community's most valuable resources. I plan to maintain the district's goals of excellence in education through parent, community and staff involvement.

CAMPAIGN MAILING ADDRESS: 2425 91 Pl. NE Bellevue, WA 98004 PHONE NUMBER: 453-1535

Candidate did not submit a statement or photo.

**Steven (Matt)  
GOLDBERG**

# Bellevue School District No. 405

## Director



D  
I  
S  
T  
R  
I  
C  
T

2



**Phil  
NOBLE**

Born August 1, 1946. I graduated from Sammamish High School in Bellevue. I earned a degree in Business Administration and a law degree from the University of Washington. After a clerkship at the Washington Supreme Court and the U.S. District Court, I began a law practice at Helsell, Fetterman, Martin, Todd & Hokanson, where I am now a partner.

I am seeking reelection to the Bellevue School Board because Bellevue and its schools are important to me. I have lived here over 20 years. With two children in elementary school I have a vested interest in the quality of education we provide.

I was elected to the School Board four years ago. Previously, I served a year on the school district's fiscal committee, which studies and makes recommendations on financial matters. This background has given me a great deal of knowledge and experience concerning the problems and opportunities facing our schools.

Our district is in transition. It is studying and implementing new programs at the high school and elementary levels. The recently adopted middle school program is being restructured and the district is considering a new local school management approach. New facility improvements are being planned. We continue to have declining enrollment and diminishing financial resources. Over the past four years I have studied and dealt with these and other issues. These matters will continue to demand thoughtful study and tough decisions.

Twenty-two years experience in education as a teacher (all grade levels), parent of 4 and volunteer. Served as unit president and levy/legislation chairman of PTA (20 year member). Served as chairman Parent Advisory Council for Bellevue's Chapter I program and on the 1986-1987 school closure citizens' committee.

Taught in 23 of 26 Bellevue schools, 1985-1987.

B.S. Education, Mankato State University. Graduate studies, Mankato State University, University of Washington, Seattle Pacific University.

My candidacy is based on the belief that our children deserve and must have the best education possible. Their future and the future of our community depend on this.

The biggest challenge ahead for Bellevue Schools will be providing quality education under the current state laws restricting educational funding. These are the primary issues that must be addressed, however, separately.

It will be necessary to work with our legislature to change our current state laws that limit the potential of Bellevue's educational process.

Increased communication and involvement between the school board and the community will be vital to providing higher educational standards meeting the demands of the future.

Decisions regularly put before our school board are increasingly critical and complex. Research, public input and careful thought must precede these decisions.

I intend to be a "hands-on" school board member. I am fortunate to be able to devote the time and effort necessary to be an effective director and will not lose sight of our primary responsibility of quality education.

CAMPAIGN MAILING ADDRESS: 14206 NE 12 PL Bellevue, WA 98007 PHONE NUMBER: 643-7831

**Sheila R.  
FIX**

D  
I  
S  
T  
R  
I  
C  
T

4



**Sherrie  
MILL**

Born July 22, 1947, I attended Seattle Public Schools. I graduated magna cum laude from the University of Washington earning a Bachelor of Science degree in dental hygiene and educational honors in Phi Beta Kappa and Mortar Board. My professional background includes teaching clinical dental hygiene at Shoreline Community College and the University of Washington. I currently work as a homemaker and part-time hygienist in a private dental practice.

My decision to pursue a position on the Bellevue School Board has evolved out of twelve years of volunteer work in the Bellevue schools. As a PTSA officer at my sons' schools, a Bellevue PTSA Council president coordinating the efforts of the district's twenty-three PTSA schools and a Bellevue Schools Foundation trustee administering the Small Grants Program, I have been involved with the educational concerns of students, parents, staff and the community. My volunteer responsibilities have exposed me to the various perspectives and issues I must consider as a member of the Board of Directors.

Among the issues I would like to pursue are: excellence and equity, improved communication with the school community, accountability, partnerships with business and government, funding and morale. My goal is to make careful, accurate and fair decisions, and I am willing to invest my time to achieve this goal. I believe that the education of our children is worth the investment.

CAMPAIGN MAILING ADDRESS: 1619 168 Ave. NE Bellevue, WA 98008 PHONE NUMBER: 747-7485

**UNOPPOSED**



# Issaquah School District No. 411

## Director

**LOCAL FOCUS:** The Issaquah School District serves a population of about 38,000 people in a 110-square-mile area encompassing the cities of Issaquah and Preston and unincorporated areas adjacent to Bellevue and Renton. Approximately 7,000 students are served by 750 employees in two high schools, three middle schools, seven elementary schools.

D  
I  
S  
T  
R  
I  
C  
T  
1



**Valerie Knecht  
HOFF**

Born: Tacoma. Practicing attorney for 9 years. Employment with Nelson and Hoff, P.S., Bellevue. Education: B.A. and J.D. (Univ. Puget Sound), M.A. (Purdue). Married; one child at Issaquah High School. Member: Washington State Bar Association, American Bar Association, Seattle-King County Bar Association, Women's University Club of Seattle, Who's Who in American Law, 1987; Who's Who in American Women, 1984 to present. Holds Washington State Education Certificate.

Our children are our greatest resource. They must be given an education that prepares them for an everchanging and challenging society. Because we live in a Pacific Rim state, certain courses need to be emphasized and/or added to the existing curriculums. Communication, both oral and written, is necessary to enhance the lives of our children and prepare them for the future, including placement in colleges and employment. Decreasing standardized test scores in math indicate a need to adhere to the basics of "reading, writing, and arithmetic." The school board's major function is to develop policies that are in the best interests of all children in the district, and still reflect the differences among individual students. No aspect of student life can be overlooked in the search for excellence. Issaquah's population is changing and growing with the developments on the Pine Lake Plateau, Cougar Mountain and south districts. But, we must remain in our budget and have fiscal responsibility as well. This starts and ends with the school board.

**CAMPAIGN MAILING ADDRESS:** 6212 164 SE Issaquah, WA 98027 **PHONE NUMBER:** 747-4128



**Karen Taylor  
SHERMAN**

Karen Taylor Sherman, 40; Indiana native; Indiana University 1964-67; graduated from Dickinson State (North Dakota), 1968: BA in English, Russian and BS in Education, English. Taught English, North Dakota, 1968-71. Married, two children.

President Issaquah School Board. Served as board vice-president, legislative representative; levy/bond PR co-chair; bond committee member; president, King County School Directors.

Active in PTA, Issaquah Chamber (board), KCTS/Channel 9 Board; State School Directors' Association (2nd Vice President).

I have worked hard at being a solid, effective board member, one you can be proud of. I have helped move this district far from the situation it was in when I was elected eight years ago.

A good listener, I make decisions based on careful consideration of the facts rather than on parochial interests. Devoting much of my time and effort to district concerns, I have developed valuable contacts outside of the district that benefit Issaquah (especially since Olympia controls over 85% of our funding). In education circles statewide, I am recognized as an effective leader.

We will soon be the exceptional district that we all want Issaquah to be; everything I have worked hard for in the last ten years has been with that goal in mind. Even with our recent problems, we still are able to do more than ever before for Issaquah students.

*Experience, leadership and commitment are vital to Issaquah.*

I've earned the experience and demonstrated the leadership and commitment.

I'd appreciate your vote. Thank you.

**CAMPAIGN MAILING ADDRESS:** P.O. Box 904 Issaquah, WA 98027 **PHONE NUMBER:** 641-0234

D  
I  
S  
T  
R  
I  
C  
T  
3



**Diego  
FRUTOS**

Born 1943, the father of 5 sons, who have been or are presently in the Issaquah School system; attended the American Academy of Dramatic Arts, made a career change and received a Bachelor of Arts in Theology. He has worked within the ministry for 23 years. Received a Bachelor of Arts degree in Communication and upon completion of his thesis a Masters Degree. He is presently Chaplain/Director of transients services at Union Gospel Mission.

It's time for a change. The Washington State School Directors' Association Workshop manual states that the "Board approves the budget... and board approval of expenditure" must take place. I believe the School Board needs to acknowledge full responsibility for the financial fiasco and voice an apology to the voters of Issaquah. I'm opposed to busing kindergarten students. I favor a "Parent Advisory Committee" as well as student input, by having a "Student Board Advisor" plus have students evaluate their teachers each semester. I'm in favor of increased salary or bonus for exceptional teachers rather than teaching gadgets. I firmly believe that the school board *MUST* inform King County and Olympia officials that before they plan to enlarge our community, they ought to listen more carefully to those on the "home front". We cannot continue to allow these higher powers to bring families plus students, on a run away train, when we as a school community neither have the school buildings or money to educate them by law!

**CAMPAIGN MAILING ADDRESS:** 1649 215 Place SE Issaquah, WA 98027 **PHONE NUMBER:** 392-2313



**Bill  
McGLASHAN**

Bill McGlashan, born in 1932, is a Manager in the Finance Department at Boeing with experience in a variety of business assignments in the past 30 years. Issaquah School Board skills gained in eight years of service include President, Vice-President, Legislative Representative, Board Member and Past President of KCDA Purchasing Coop and member of the SPI Community Education Advisory Committee. Bill attended the University of California at Berkeley and majored in business and economics.

Bill is committed to continuing the improvement of the educational program for Issaquah students. He would achieve results through: long-range planning in both curriculum and finance; curriculum enrichment for today's changing work environment; use of district financed workshops to provide teachers the opportunity to diversify and update their teaching skills; continued use of parent, staff and concerned citizen committees to keep the school district in touch with the community regarding educational offerings, facilities planning, and future requirements; assuring the vocational technical program continues to grow in accordance with the five-year plan and encouraging business partnerships to keep the program alive.

Bill is dedicated to remain visible and available for input from all segments of the community. The future is tomorrow—let's plan for it today.

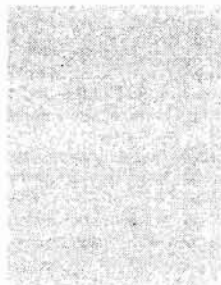
**CAMPAIGN MAILING ADDRESS:** 70 E. Sunset Way #199 Issaquah, WA 98027 **PHONE NUMBER:** 392-0400

# Issaquah School District No. 411

## Director



D  
I  
S  
T  
R  
I  
C  
T  
  
5



**Darlene J.  
HAUGEN**

3/21/33 date of birth. Retired school teacher. Master Education and Special Education. Certificated Alcohol & Drug Counselor. Former welfare mother. Raised 4 children as single parent. Taught pre-school, profoundly retarded, gifted, elementary, middle school, high school, college interns, & emotionally disturbed students.

The United States has the greatest school system in the world. I support and promote schools without drugs, recognition of the "Average Student" (the neglected), an outstanding music program, the proper allocation of funds, and practicing what we teach nutritionally.

I support and promote the Teachers' Effectiveness Program, lowering classroom size, increasing the pay not only for the teachers but also for the principals and secretaries. Also, to allow incompetent and burned out teachers to transfer into other sectors. I support and promote the increase of funding for vocational education and increasing equivalency credits.

I support and promote federal funding for child care services, since the current services are inadequate, too expensive, and do not meet the needs of all children; decrease all latchkey children.

I support and promote special programs LLD and TLC and expansion to Middle Schools of TLC.

I support and promote utilization of community resources. The Foundation, C2B2, urges businesses to adopt schools, utilize senior citizens, and allow school and community joint use of facilities.

**UNOPPOSED**

# Lake Washington School District No. 414

## Director



D  
I  
S  
T  
R  
I  
C  
T  
  
1



**Clare  
COCHRAN**

Clare (Downs) Cochran, married, mother of three children, attended Lake Washington Schools K-12, received a B.A. in Education from Seattle University, School Psychologist Credentials from Seattle Pacific University and a M.A. in Guidance and Counseling.

In addition to her classroom teaching experience K-8 in the Lake Washington Schools, Clare taught in gifted, special education and Head Start programs.

Clare is presently employed as a legislative assistant and community liaison to the King County Council.

A school board member has a responsibility to listen and to be available and responsive to the people he/she represents.

I believe my background and experiences have provided me a solid foundation for working with people and understanding representative government, making me uniquely qualified to serve as a member of the Lake Washington School Board.

It is a fundamental belief of mine that kids need and want to feel good about themselves. Schools should be places where students feel comfortable learning and growing from the people and experiences they find there.

I think children with potential learning problems could be identified at an earlier age. Our counseling program should be expanded into the primary grades in an effort to minimize failures and maximize successes for children.

Basically I believe that schools should be places where students feel confident and encouraged to stretch to new limits as human beings. Whatever I can do as a board member to contribute in a positive fashion to a child's school experience, I want to do.

**CAMPAIGN MAILING ADDRESS: 226 8th Ave. Kirkland, WA 98033 PHONE NUMBER: 823-4261**



**Carole  
GEORGE**

Carole George, 47, has an English degree from Northern Michigan University. She taught in North Carolina, Wisconsin and in Seattle from 1963-68.

Between 1968-1985, Carole taught at Finn Hill and Kamiakin Junior Highs and the Vo-Tech. She has served as PTSA Council Co-President and on local and District committees, Scholarship committee, the original "2001" Committee and the Drug and Alcohol Task Force.

Carole is married and has two sons attending Juanita High.

Service, commitment and involvement characterize my current record as your school board director. I have demonstrated vigor and dedication toward building and maintaining our district's excellent programs in basic skills, drug and alcohol education, and in areas which further develop teachers' instructional and curriculum skills. Frequent visits to schools and communication with people in the community have enabled me to become a solid link between our schools and this community. I strongly believe that schools belong to the people, and this has been demonstrated by my timely and caring responsiveness to your concerns, request and recommendations.

Upon election to your school board, I will continue to uphold and improve on the District's leadership position in the state. I will maintain a fundamental focus on developing the finest programs for our students, along with a commitment to expand and promote excellence and equity in curriculum, teacher competence and in safe and orderly classrooms. You can depend on me to face the issues diligently and to conscientiously carry out my duties as a board member.

**CAMPAIGN MAILING ADDRESS: 6922 NE 124 ST Kirkland, WA 98034 PHONE NUMBER: 823-8047**



# Lake Washington School District No. 414

## Director

D  
I  
S  
T  
R  
I  
C  
T  
  
4



**Bob  
HUGHES**

Bob Hughes has been a member of the Lake Washington School Board since 1978, serving as the Board President in 1984, 1986 and 1987. He is 46 years old, a graduate of Western Washington University, and, with his wife Linda, has two children and one grandchild. Bob has been with The Boeing Company for over twenty-three years and is currently a Boeing Computer Services manager, in the second year of a Washington Roundtable Loaned Executive assignment.

For the past nine years Bob Hughes has continued to be a hard working and committed school board member, dedicated to achieving quality education within the Lake Washington School District. Specific areas that he proposes to address during the next four years will include:

1. Keeping the school curriculum up-to-date with changes that are necessitated by society and by business expectations. It is important that we all assure that our children are able to fit into society in the most productive way possible. Additionally, it is up to each of us to prepare our children for the rapidly changing world that is ahead. Mr. Hughes will continue to ask for your guidance in telling the schools what to change and how fast to change it.

2. Making schools more effective through individualized caring for students. Educational research has clearly shown that each child's feeling of self worth is a key determinant in effective schooling (Reyes, 1984). Mr. Hughes will continue to offer educational leadership in placing a high priority on caring for individual students.

CAMPAIGN MAILING ADDRESS: 7503 117 Ave. NE Kirkland, WA 98033 PHONE NUMBER: 822-2604

**UNOPPOSED**

D  
I  
S  
T  
R  
I  
C  
T  
  
5



**Catherine  
BOCK**

Catherine Bock, wife and mother of three, has served community needs for 17 years. Her volunteer activities include Evergreen Hospital, Cub Scouts, Multiple Sclerosis Society, crisis counseling, CAC ombudsman and precinct committeeman.

Catherine Bock received the Rockwell Elementary Golden Acorn award (1984).

Catherine Bock interned in Olympia with district Legislators on education committees (1987). Bock volunteers in local schools and works on district committees through the Citizen's Advisory Council to the Lake Washington School Board.

Catherine Bock will be a responsible and responsive member of the school board emphasizing her effective communications skills.

Catherine Bock stresses parental and citizen involvement, respect for alternative views and open board process.

Catherine Bock will encourage a positive environment where all views are respected and concerned citizens know that their input is important before decisions are made. Bock realizes that the "why" of decisions must be communicated to the community.

Catherine Bock will stress local control, believes in a constant vigilance to insure that school funds are used for the greatest educational advantage of students and feels that special levy funds should be used as voted by the community.

Catherine Bock will respect and listen to the concerns of all citizens in decision making, understanding that parents, teachers, board and administration must work together for effective education programs. Bock supports top-quality instruction offered to all students and believes that staffs must have ample opportunity to determine their own staff development needs.

Please vote for Catherine Bock.



**Joyce  
TREPUS**

Joyce Trepus is 48 years old, married and the mother of two sons. She graduated from Seattle Pacific College in 1960 and has continuously updated her education through seminars and various classes. As a teacher, parent, and a local community-school volunteer for many years, Joyce has visibly committed herself to quality education. Currently, Joyce Trepus is office manager for the family contracting business and is serving as a Lake Washington School District board director.

OPPORTUNITY, EXCELLENCE AND PARTNERSHIPS are hallmark beliefs I hold for our Lake Washington Schools. Active involvement in the district has shaped my hopes and actions for quality schools.

We must provide opportunity for all children to benefit from solid academic programs, especially in English, reading, science and mathematics. We must provide opportunity for adults to receive quality training in our vocational technical institute, and we must provide these opportunities to learn in schools free from drug and alcohol abuse, where positive discipline conditions exist.

I believe we have made significant strides in our quest for excellence by reducing class sizes. Excellence is also indicated by greatly improved test scores. Our students score among the highest in the nation, and all this is being achieved in classrooms where caring is demonstrated.

The partnership we have achieved includes listening and sensitivity to the concerns of parents. My aspirations are to improve that partnership between the schools, parents, community and school board. I am anxious to resume that quest this fall as one of your school board members.

CAMPAIGN MAILING ADDRESS: 20816 NE Novelty Hill Rd Redmond, WA 98053 PHONE NUMBER: 868-1508



## BALLOT TITLE

### PROPOSITION NO. 1 AUTHORIZING PROPERTY TAX LEVY

Shall King County Fire Protection District 10 be authorized to increase its regular property tax levy to \$1.50 per thousand dollars of assessed value to be levied initially in 1987 for collection in 1988?

(This shall not be construed to authorize an excess levy and shall be subject to otherwise applicable statutory limits).

## Explanatory Statement:

King County Fire Protection District 10 is the fastest growing fire district in the County. This influx of population and termination of an operational agreement with another agency has put particular demands on the Fire District. New facilities and more manpower are needed to maintain the same high degree of service being afforded to the public presently.

Two stations are planned for the northern end (Pine Lake Plateau) of the district; one of which is already under construction, the other will be provided by the developers in and around the Klahanie area. A new station is needed in the southern end (Coalfield/May Valley) of the district. A facility there had been shared with an adjoining fire district, however the contract for that facility will terminate effective January 1, 1988. In the easterly portion (Preston) of the district a new facility will be required by 1991 as permits for the existing station expire. With the new stations and population growth, manpower needs also will increase.

It takes a minimum of nine career people to man a station on a 24-hour basis. Currently two stations are manned on a 24-hour basis, one on the Pine Lake Plateau and the Headquarters Station in Issaquah. The plan is to man the South station. Every station in the district has volunteer personnel and are supplemented by the on-duty career staff. During regular daytime working hours especially, volunteers are not always available, therefore, more career personnel must be hired.

Approval of this proposition will provide the district with the resources necessary to meet these demands.

## Statement for

No statement submitted.

## Statement against

No statement submitted.



# Fire Protection District No. 10

## Commissioner

6  
Y  
E  
A  
R  
  
T  
E  
R  
M



**Richard P.  
LANDIS**

Born August, 1924, Chehalis, married 42 years to Louise, four children. Educated in Portland, Oregon, public schools, University of Oregon, University of Detroit. Former newsman. Member, Yakima Fire Department 1950-1970. Chief, Fire District 10, 1970-1975. Interim Director, King County Emergency Medical Division, 1975-1976. Former President, King County Fire chiefs Association, present Vice-President, King County Fire Commissioners Association. Fire service trainer, 18 years. Frequent fire service seminar lecturer in Northwest and Alaska. Incumbent Commissioner.

Our fire district protects the fastest growing area of the county. Since 1970 I have seen the budget grow from under \$75,000 to over \$2 million, and the department evolve from an essentially volunteer organization to one which must increasingly retain career fire-fighters. Coping with this growth and the changes it compels is the greatest challenge to the Commission, that is, to provide the most effective protection within our budget.

While it is important to consider our own objectives it is necessary not to focus entirely on our own needs. The desires and demands of our population must be considered as well as problems and goals of other entities including Federal, State and County governments, municipalities, private sector and other fire districts. I feel the Commission has established an harmonious relationship with these entities and it is my desire to continue this cordial relationship. At the same time we must assure the safety and security of all members of the department.

For these reasons I am pleased to be a candidate for re-election.

CAMPAIGN MAILING ADDRESS: 15923 259 AV SE Issaquah, WA 98027 PHONE NUMBER: 392-6239

**UNOPPOSED**

2  
Y  
E  
A  
R  
  
T  
E  
R  
M



**Robert A.  
LONTZ**

Born February 1942, Bob's a 22 year veteran and Officer in the Seattle Fire Department. He has also risen through the ranks to serve more than 3 years as Assistant Chief with Fire District #10. After earning a degree in Fire Command and Technology, he was trained in 1985 at the National Fire Academy. He was a member of the Washington State Association of Fire Chiefs, involved in Scouting, and is his Church's Treasurer.

Fire District 10 faces complex areas of concern.

Unfavorable annexations to the West and South threaten our revenues by \$300,000 in 1988. To counter this, District 10 *should* annex the North Pine Lake Plateau after opening our Station 108.

Serious losses of volunteers, inadequate manning of fire apparatus (two fire-fighters responding!) are unsatisfactory problems. A decline in training, a proposed removal from service of 3 Aid Cars in Maple Hills, Mirrormount, and Preston are inappropriate actions.

Did you know the commissioners passed \$1.2 million in bonds without voter approval, and without voter notification? I cannot support this action by your elected officials!

What do I stand for? I support adequate manpower in emergency responses, no loss of services, increased fiscal repsonsibility with your taxes. I will work for improving volunteer recruitment, and increased training. A successful annexation at the North Pine Lake Plateau would improve our revenues. Foremost, District 10 should work cooperatively with surrounding Fire Districts and Departments.

My campaign can be contacted at: 32920 S.E. 121 Street, Issaquah, 98027. Phone 222-5707.



**Vaughn (Jim)  
MERRITT**

Born January 17, 1935 in Seattle. Moved to the Issaquah area in 1950. Graduated from Issaquah High School in 1953. Became a volunteer fire fighter in May, 1954 until retiring in August, 1987 at the rank of Battalion Chief.

From 1961 to 1971 was employed with the Boeing Company in material distribution. Upon leaving was co-owner of Merritt Lighting and Appliance. Currently engaged as a manufacturer's representative for aircraft equipment.

With the rapid growth of this Fire District, my goal is to maintain the most professional service for the taxpayers' dollars. In working close with the administration, this goal will be met. I will keep close watch on any movement by other governmental agencies which show an intent to annex portions of District 10. Some such annexations could and will have a direct impact on operating revenue.

In view of the ratio for fire to medical calls, I will actively pursue obtaining an additional Medic I unit to support this Fire District.

An ideal condition would be to have all District stations manned on a 24 hour basis. Due to economics this is not possible. We must rely on the successful existing volunteer program for years to come.

CAMPAIGN MAILING ADDRESS: 21301 SE 24 Issaquah, WA 98027 PHONE NUMBER: 392-3939

# Fire Protection District No. 25



COMMISSIONER



**Donald J.  
JENSEN**

Don, a manager with Boeing Computer Services, has a Masters Degree in Civil Engineering. He has lived in the District for more than 21 years and has been active in the Fire Service for 14 years. Don has been a commissioner for the past 6 years and is currently Chairman of the Board. In addition to being a volunteer officer and a commissioner, Don has demonstrated his concern by volunteering extensive time in his community.

My educational background and experience in the engineering field has provided me with the necessary decision-making skills for the Fire District. I have a thorough knowledge of water distribution, water flow, building construction and traffic control. I have also studied the chemistry and physics of fire suppression, fire investigation and the handling of hazardous materials.

The proper care and transportation of the physically ill and the injured are a great concern of mine. I believe the Fire Department must continually train its personnel, upgrade and maintain all the equipment and provide the best service possible within the budget.

During the past 14 years I have strived to improve both the day-to-day operations of the Fire Department as well as improve the service provided to the community. As our community continues to grow and be developed, special attention to the needs of all the people in the district must be addressed. My management skills and administrative experience will provide the Fire District with the best person possible for this position.

CAMPAIGN MAILING ADDRESS: 12104 SE 67 Place Bellevue, WA 98006 PHONE NUMBER: 746-4562

**Barry  
WOLBORSKY**

Dr. Wolborsky was born on August 13, 1942. He received his bachelor's degree from Clarkson College, his master's degree from Seattle University, and his doctorate from the University of Washington. He has functioned as a personnel consultant to local industries for the past 15 years and currently runs his own business in Bellevue, Washington.

The citizens of King County Fire District Number 25 deserve to be represented on the fire district's Board of Commissioners. From the district's past history, this does not seem to have been the case.

It is very difficult to see how many of the commissioners' decisions in the last five years have considered the wishes or best interests of the citizens.

I believe that local government should be *directly* responsive to the citizens and *directly* accountable for tax dollars spent.

We all want a first class fire department, but we all work hard for our money and would like assurances that our tax dollars are being spent in the most *effective* and *efficient* way possible.

If elected, I will be the citizens' voice on the board and attempt to insure the department's management by twentieth-century techniques, insuring your tax dollar is wisely spent.

CAMPAIGN MAILING ADDRESS: 6808 119 SE Renton, WA 98056 PHONE NUMBER: 271-5799

LOCAL FOCUS: King County Water District No. 107 supplies water and wastewater service to Factoria, Newport Hills and surrounding areas. The district is governed by an elected three member board of commissioners. The District's goal is to continue to provide safe, reliable and economical water and wastewater service.

## Water District No. 107



COMMISSIONER



**Elmer F.  
FOSTER**

I was born in Seattle and have lived in this region most of my life. Graduated from the University of Washington with a B.S. degree in Mining and Metallurgy. After 41 years with the company, I retired from Boeing engineering in 1981. Resident of Newport Hills for the last 25 years. I have been a Commissioner of King County Water District No. 107 for 11 years.

As an incumbent, I am seeking re-election to the office of Commissioner, Water District No. 107 in order to utilize my 11 years experience in this position. Together with my fellow Commissioners we can continue to do our job of setting policies that have helped create our well engineered and managed District water and sewer systems. I support a basic policy that each new development bears the cost and is responsible for the installation of new water and sewer system extensions required by the development. Our knowledgeable staff does not lose sight of the fact that they are working for the rate payers. We all want to insure that rates are fair and as low as feasible.

UNOPPOSED



# Eastgate Sewer District

C  
O  
M  
M  
I  
S  
S  
I  
O  
N  
E  
R

**Robert A. (Bob)  
BOSCOLE**

Born Seattle May 4, 1920. U of W 1938-40, US Naval Academy 1940-43. Graduate Ocean Engineering Studies, MIT 1946-49 and Civil Engineering at U of W 1971-73. Engineering Duty Officer 1943-69, in Design, Construction and Repairing Naval Ships. Assessments Analyst and King County Deputy Assessor (1973-79). Civil Engineer in Hydraulics, King County Surface Water Management Division (1979-1983). Commissioner, Eastgate Sewer District 1971-87.

I treat everyone equally and fairly and protect our constituents' interests by insuring developers be required to install safe, quality sewage systems without passing any development costs on to existing customers.

In my current term we have succeeded in getting Bellevue's utility tax rescinded for our Bellevue customers.

I have been active in monitoring Metro's design process for the expansion and conversion to secondary treatment of all its sewage to help ensure that the optimum, least cost system is constructed. I am vigorously supporting the expansion & conversion of the West Point Treatment plant to secondary treatment. It makes use of the best outfall available with the least, adverse impact on Puget Sound. It uses current facilities at West Point and still provides excellent access to the adjacent beach for all citizens. It avoids removing industrial property from tax rolls & thus avoids an ever increasing hidden tax on the rest of us taxpayers. The cumulative effect of this hidden tax would ultimately exceed the total cost of the project.

CAMPAIGN MAILING ADDRESS: 3425 W. Lake Sammamish RD SE Bellevue, WA 98008 PHONE NUMBER: 746-8573

**UNOPPOSED**



# Public Hospital District No. 2

LOCAL FOCUS: The citizens of Bothell, Kenmore, Kirkland, Juanita, Redmond and Woodinville established King County Public Hospital District No. 2 to provide health services as are appropriate to the community's needs. Evergreen Hospital Medical Center and affiliated services (Surgi-center, Urgent Care, Care Network) exist to provide public access to high technology care with personal service.

C  
O  
M  
M  
I  
S  
S  
I  
O  
N  
E  
R



**John  
PLOVIE**

Date of Birth: April 27, 1949. Occupation: Attorney. Education: 1971-B.S. Preventive Medicine, University of Washington; 1973-Masters of Health Administration, University of Washington; 1981-Juris Doctor, University of Puget Sound School of Law. Community involvement: 1984-1985-Community Council, Evergreen General Hospital; 1986-Marketing Committee, Evergreen General Hospital; Feb., 1987 to present-Commissioner, Public Hospital District No. 2 (Evergreen Hospital Medical Center); 1986, 1987-Chairman, Transportation Committee, Redmond Chamber of Commerce (two terms); 1987-Chairman, Finish 520 Task Force, Redmond Chamber of Commerce; 1983 to present-Member, Redmond Rotary Club (Rotarian of the Year, 1984-1985). Professional: 1981 to present-Member, Washington State Bar Association; 1983 to present-Member, Commercial Law League of America.

Health care has never been more complex than it is now. There is more competition, more insurance options and more health care choices. Slick advertisements for hospitals and insurance programs have made the choices even harder to make.

Yet, hospital care is still more costly than many can afford. Many do not have insurance or enough insurance. It is beyond the ability of any one hospital to solve all of these concerns. However, if each hospital contributes its fair share, then progress can be made.

If I am elected hospital commissioner, I pledge to find ways to serve our community health care needs in a more efficient, less costly manner. Evergreen is a good hospital with an excellent and very caring staff. It will take knowledgeable and concerned leadership for it to continue to meet our community needs in the future. I believe I have the skills, experience and community awareness to meet these challenges. Most of all, I am, like all of us, a health care consumer. When I am called upon to make decisions on policy at Evergreen, it is the needs of the consumer that will be most important to me. Sometimes that may mean making decisions that aren't popular with other hospitals or other health care providers. Nonetheless, that is a small price to pay to know that our families are well cared for when the need arises.

These are the things that are important to me. I have lived and worked in this community for many years. I believe that I can do a good job representing you as a hospital commissioner. If elected, I will do my best to represent you in this important position. I respectfully ask your support.

**UNOPPOSED**

# COMPLETE TEXT OF King County Proposition No. 1

AN ORDINANCE providing for the submission to the qualified electors of King County, at a special election to be held in conjunction with the general election on November 3, 1987, of a proposition seeking approval of the issuance by King County of not more than \$99,800,000 of unlimited tax general obligation bonds, the principal of and interest on which shall be payable from annual property tax levies in excess of regular property tax levies, maturing within a maximum term of 20 years, to finance certain capital improvement projects at Harborview and Pacific Medical Centers, and the Seattle-King County Health Department's Columbia, East, South, Southwest and Renton Clinics.

**PREAMBLE:** Harborview Medical Center ("Harborview") includes the only trauma center in a four-state region providing level one emergency patient care. It serves as the major regional facility for referrals of critical injuries including burn cases and spinal cord and head injuries. Annual emergency room patient visits have increased from 31,000 in 1982 to over 40,000 in the 12 months ended June 1987. Harborview plans an expansion and remodeling of its emergency trauma center to accommodate the increasing patient volume and to more efficiently locate emergency and other support services.

Currently nursing units with 92 beds for patients requiring acute nursing care are housed in a portion of the Harborview facility built in 1931. Harborview plans to relocate the nursing units to a modern facility to meet state regulations and to provide an efficient physical configuration for patient care.

All of Harborview's medical and surgical out-patient facilities are housed in aging facilities which lack adequate heating, ventilation and air conditioning and which contain inadequate clinic space which is inefficiently designed. Harborview intends to renovate its out-patient facilities to promote efficiency, increase capacity and meet contemporary standards.

Pacific Medical Center ("PMC") is public development authority which operates clinics in Seattle, Totem Lake, Renton and soon in Bellevue. Pursuant

to written agreements, PMC is the provider of specialty and diagnostic medical services for low-income and uninsured patients referred from King County and Seattle community health clinics. It is also the Regional Uniformed Services Treatment Facility for active duty and retired military personnel in King County under contract with the Department of Defense. Structural improvements to the PMC's Beacon Hill facility are necessary to meet the Seattle seismic and other building codes to allow the institution to continue fulfilling its major role in the King County public health care delivery system. The continuation of PMC's ability to contribute to the public health care system is important to King County's purposes to provide for the health and welfare of its citizens.

The non-profit community clinic known as the "Community Clinic System" has become the family doctor for more than 70,000 low income residents of King County. The Health Department plays a major role in planning, development and support of the community clinic system, as well as operating a network of health service centers throughout the county providing specific public health services focused on children, seniors and pregnant women. In order to meet the needs of the growing population, new facilities are needed immediately in the East side, South King County and in Southeast Seattle health department service areas. Furthermore, co-locating non-profit community clinics with these health department clinics provides the public both cost efficiencies and better access to comprehensive family services. The Renton and Southwest health department service centers require improvements to correct building deficiencies to promote their efficient operation.

It is the intent of King County to issue unlimited tax general obligation bonds to finance the capital improvements and to submit this proposal for approval by the electorate.

BE IT ORDAINED BY THE COUNCIL OF KING COUNTY:

**SECTION 1.** "Regional Health Care Capital Improvements Project," as used herein, shall mean:

A. Capital improvements to Harborview for the

purposes of expanding and consolidating its emergency trauma center and other key diagnostic and treatment departments, expanding, improving and relocating patient and visitor services, and modernizing, expanding and consolidating in-patient and out-patient facilities; and

B. Capital improvements to PMC for the purpose of making structural repairs and or additions which will bring its "Tower Building" on Beacon Hill into compliance with the City of Seattle's seismic and other building codes (the "PMC Project"); and

C. The following capital improvements to facilities operated or to be operated in whole or in part (as more specifically noted below) by the Health Department (collectively, the "Health Department Clinic Project"):

1. A new Southeast Seattle Community Health Center in Columbia City area intended to house the services of the Health Department's existing Columbia Health Center and which may also house (but shall not be required to do so) a co-located nonprofit community health clinic; and

2. A new East District Public Health Center in east King County intended to house the services of the Health Department's existing East District Public Health Center and which may also house (but shall not be required to do so) a co-located nonprofit community health clinic, and may also include a satellite clinic in north King County to be operated, in whole or in part, by the Health Department; and

3. A new health center in south King County intended to house the services of either the Health Department's existing Auburn Health Center or an additional Health Department health center, and, in either case, which may also house (but shall not be required to do so) a co-located nonprofit community health clinic; and

4. Expansion and remodeling of the Health Department's existing Renton Health Center; and

5. Roof repairs at the Health Department's existing Southwest Public Health Center.

**SECTION 2.** Subject to the approval of the qualified electors of King County, the county council hereby authorizes the issuance of unlimited tax general obligation bonds (the "Bonds") in an aggregate principal amount not to exceed \$99,800,000 for the purpose of providing all or part of the

money necessary to pay the capital costs of the Regional Health Care Capital Improvements Project. The term "capital costs," as used in the foregoing sentence, shall be construed consistently with the term "capital purposes" in Article VII, Section 2(b) of the Washington Constitution and R.C.W. 84.52.056, but, subject thereto, may include the costs of (i) property acquisition, site preparation and demolition; (ii) development, design, engineering, architecture, planning, financial, legal, relocation and other services lawfully incurred incident to the development of the components of the Regional Health Care Capital Improvements Project and their financing; and (iii) construction, renovation, remodeling, equipping and furnishing of the components of the Regional Health Care Capital Improvements Project and their financing, including its incidental costs and costs related to the sale and issuance of the Bonds; however, the term "capital costs" shall not include maintenance, operations or costs for replacement of equipment.

The maximum amount of principal proceeds of the Bonds to be made available to each component shall be as follows:

A. \$75,465,000 for the Harborview Project;

B. \$9,315,000 for the PMC Project; and

C. \$15,020,000 in the aggregate for the Health Department Clinic Projects.

The Bonds shall bear such date or dates; shall mature at such time or times not to exceed 20 years from the date of issuance thereof; shall be issued in such denominations; shall bear such terms, conditions and covenants; shall be in such form; shall bear interest at such fixed or variable rate or rates; shall bear such redemption and registration privileges; and shall be sold in such manner, at such time or times, in such amounts and at such price or prices as the county council shall hereafter determine by ordinance. The Bonds may be issued in one or more series, either separately or in combination with other authorized general obligation bonds of King County.

The Bonds shall be general obligations of King County and, unless paid from other sources, both the principal thereof and the interest thereon shall be payable from annual property tax levies, if authorized by the qualified electors as provided in section 5 of this ordinance, upon all taxable property within King County in excess of the regular prop-

erty tax levies without limitation as to rate or amount.

**SECTION 3.** Subject to the approval by the qualified electors of King County of the issuance of the Bonds for the purposes described in section 2 of this ordinance, the county council may, by ordinance, provide for the issuance of short-term obligations in anticipation of the issuance of the Bonds in accordance with the provisions of R.C.W. 39.50. The aggregate principal amount of all such short-term obligations and Bonds outstanding at any time shall not exceed \$99,800,000.

**SECTION 4.** No part of the Bonds or any short-term obligations in anticipation thereof, the proceeds of which are intended to finance the PMC Project, shall be issued or sold unless and until the county council shall have approved and authorized the execution of, and King County and the City of Seattle's Pacific Hospital Preservation and Development Authority have entered into, an appropriate interlocal cooperation agreement defining the rights and duties of the respective parties with respect to the accomplishment of the PMC Project and the use of the proceeds of Bonds or short-term obligations in anticipation thereof.

**SECTION 5.** The county council finds that an urgent need exists for the Regional Health Care Capital Improvements Project and declares that an emergency exists requiring submission to the qualified electors of King County of a proposition authorizing the issuance of the Bonds for the purposes described in section 2 of this ordinance at a special election to be held in conjunction with the general municipal election to be held on November 3, 1987.

The King County manager of records and elections as *ex officio* supervisor of elections is hereby requested to find the existence of such emergency pursuant to R.C.W. 29.13, and is requested to assume jurisdiction of and to call and conduct a special election and to submit to the qualified electors of King County the proposition set forth below. The clerk of the council is hereby authorized and directed to certify said proposition to the King County manager of records and elections in substantially the following form, with such additions, deletions or modifications as may be required by the King County prosecutor:

KING COUNTY  
REGIONAL HEALTH CARE  
CAPITAL IMPROVEMENTS  
PROPOSITION NO. 1

Shall King County, to finance Harborview Medical Center's trauma center and certain capital improvements at Harborview and Pacific Medical Centers, and the Health Department's Columbia, East, South, Southwest and Renton Clinics, as provided in King County Ordinance 8196, issue up to \$99,800,000 of unlimited tax general obligation bonds with a maximum term of 20 years, on which principal and interest shall be payable from annual property tax levies in excess of regular property tax levies?  
BONDS, YES  
BONDS, NO

Certification of such proposition by the clerk of the council to the King County manager of records and elections, in accordance with law prior to the date of such election on November 3, 1987, and any other act consistent with the authority of and prior to the effective date of this ordinance, are hereby ratified and confirmed.

**SECTION 6.** If any one or more of the provisions of this ordinance shall be declared unconstitutional or invalid for any reason, such decision shall not affect the validity of the remaining provisions of this ordinance, the Bonds or any short-term obligations issued in anticipation thereof, and this ordinance, the Bonds and any short-term obligations issued in anticipation thereof shall be construed and enforced as if such unconstitutional or invalid provision had not been contained herein.

INTRODUCED AND READ for the first time this 10th day of August, 1987.

PASSED this 24th day of August, 1987.

KING COUNTY COUNCIL  
KING COUNTY, WASHINGTON

Gary Grant (signed)

Chair

ATTEST:

Dorothy M. Owens (signed)  
Clerk of the Council

APPROVED this 3rd day of September, 1987.

Tim Hill

King County Executive

# COMPLETE TEXT OF City of Mercer Island Propositions No. 1 & 2

**ORDINANCE NO. 8-55**  
AN ORDINANCE providing for the submission to the qualified electors of the City at a special election to be held therein on November 3, 1987, of propositions identifying a site for a new city hall and authorizing the City to levy regular property taxes for 20 years in excess of the 106% limitation for the purpose of acquiring and/or constructing a new city hall for the City and, if such proposition is approved, authorizing the City to issue its limited tax levy general obligation bonds in the aggregate principal amount not to exceed \$4,979,000, or authorizing the City to pay annual payments to finance the lease/purchase of the city hall.

WHEREAS, the proper functioning of city government requires that the City of Mercer Island, Washington (the "City") acquire a new city hall for the City; and

WHEREAS, to provide financing for a new city hall it is deemed necessary and advisable that the City levy regular property taxes in excess of the 106% limitation for 20 years to provide the principal amount not to exceed \$4,979,000 plus the cost of financing such amount for up to 20 years; and

WHEREAS, to provide financing for such city hall, it is deemed necessary and advisable that the City issue and sell its limited tax levy general obligation bonds in the principal amount not to exceed \$4,979,000, or, in the alternative, to create a public development authority pursuant to RCW 35.21.730 et seq., which will construct a new city hall and lease the city hall to the City pursuant to a lease/purchase agreement; and

WHEREAS, RCW 84.55.050 permits the question of whether or not the City may levy regular property taxes in excess of the 106% levy limitation for a limited purpose and term to be submitted to the qualified electors of the City for their ratification or rejection; and

WHEREAS, the proposed financing and election do not have adverse environmental impacts or limit the choice of reasonable alternatives for the planning, design, and construction of a new city hall prior to completion of applicable environmental review requirements;

NOW, THEREFORE, THE CITY OF MERCER ISLAND, WASHINGTON, DO ORDAIN AS FOLLOWS:

**Section 1. Findings.** The City Council hereby finds that the current city hall is inadequate to serve the present and projected needs of the City. The best interests of the inhabitants of the City require the City to carry out the plans hereinafter provided at the time or times and in the order and in the manner deemed most necessary and advisable by the Council.

**Section 2. Capital Improvements.** The City hereby orders the following capital improvements to be acquired, constructed, installed and equipped, subject to voter approval as specified herein and such environmental review and other requirements as may be

applicable. Pursuant to such process, the City shall acquire a new city hall, including any necessary land and all necessary improvements, by improving or constructing such city hall or financing the same pursuant to a lease/purchase agreement. When used in this ordinance and in the ballot proposition, acquisition of the city hall shall include the acquisition, construction and/or lease/purchase of such city hall. The new city hall shall be located at a site to be finally determined by the City Council. At the November 3, 1987 election, the voters shall be asked to express their preference between the 9611 property, 9611 S.E. 36th Street in the City, at a cost to the taxpayers of up to \$4,979,000, or the Mercerdale property, in the 3300 block of 78th Ave. S.E. in the City, at a cost to the taxpayers of up to \$4,390,000. (The \$4,390,000 does not include the value of the land since Mercerdale is presently owned by the City and is zoned only for public use.) The City Council will abide by the results of this advisory vote, unless it determines that it is undesirable to do so because of substantially unforeseen and changed conditions or environmental analysis.

The cost of all necessary consulting services, inspection and testing, administrative expenses and other costs incurred in connection with the acquisition, construction and/or lease/purchase and financing of the new city hall shall be deemed a part of the cost of its acquisition, construction and/or lease/purchase. Such city hall shall be complete with all necessary auxiliary equipment and appurtenances.

The City Council shall determine the exact specifications for such city hall. If the City Council, by ordinance, shall determine that it has become impractical to acquire any portion of the project by reason of changed conditions, or costs substantially in excess of the amount of bond proceeds or tax levies estimated to be applied thereto, the City shall not be required to acquire such portions. If all of the city hall so described has been acquired, or its acquisition duly provided for, or its acquisition found to be impractical, the City may apply the bond proceeds or any portion thereof to redemption of the bonds as the Council, by ordinance and in its discretion, shall determine.

**Section 3. City Hall Funding.** For the purpose of providing the funds necessary to pay the costs of the acquisition, construction and/or lease/purchase and financing of such city hall, as authorized by Section 4 of this ordinance, the City shall submit to the qualified electors of the City a proposition, as authorized by RCW 84.55.050, as amended by Chapter 169, Laws of Washington, 1986, to exceed the 106% levy limitation on regular property taxes contained in RCW 84.55.010 by increasing the levy rate of regular property taxes by a rate of not to exceed \$.41 per thousand dollars of assessed value in 1988 through 2007 for collection in 1989 through 2008 respectively, a period of 20 years.

Property taxes so levied in excess of the 106% levy limitation shall be applied to pay the costs of the acquisition, construction and/or lease/purchase of the city hall, and to pay the principal of and interest on any general obligation bonds of the City issued for such purposes or annual lease/purchase payments required to lease/purchase such city hall as provided in this ordinance. Property taxes levied in 2008 for collection in 2009 and in later years shall be computed as if the limitation on levies contained in RCW 84.55.010 had been in effect from 1988 through 2007 and authority to exceed the 106% limitation under this ordinance had not been approved and such increased property taxes had not been made. The cost of the city hall that will be financed through property taxes in excess of the 106% levy limitation shall not exceed \$4,979,000, which is the estimated maximum cost of the acquisition, construction and/or lease/purchase of the city hall.

**Section 4. Plan of Financing.** For the purpose of providing part of the funds necessary to pay the costs of the city hall, as authorized by Section 2 of this ordinance, the City hereby authorizes (1) the issuance of its general obligation bonds in the aggregate principal amount of not to exceed \$4,979,000, or (2) the creation of a public development authority pursuant to RCW 35.21.730 et seq., which development authority shall acquire any necessary land and buildings and improve or construct a new city hall and lease such city hall to the City for a period of 20 years. The City Council shall determine the plan of financing by ordinance. The balance, if any, of the cost of the city hall shall be paid out of any money which the City now has or may later have on hand which are legally available for such purposes.

The bonds, if any, to be issued shall be issued in such amounts and at such time or times as found necessary and advisable by the City Council. The bonds may be issued in one or more series and shall bear interest payable at a rate or rates not to exceed a maximum rate authorized by the City Council of the City. The bonds shall mature in such amounts and at such times within a maximum term of 20 years from date of issue, but may mature at an earlier date or dates as authorized by the City Council and as provided by law. The exact date, form, terms, options of redemption, maturities and conditions of sale of the bonds shall be as hereafter fixed by ordinance or ordinances of the City Council of the City passed for such purpose.

If the Council decides to finance the costs of acquiring a new city hall by the lease/purchase of the city hall from a public development authority, the Council shall by ordinance create a public development authority. The public development authority shall be created for the sole purpose of acquiring or constructing and operating the city hall, shall be composed of members appointed by the City Council, and shall be controlled by the City Council. The City Council shall pass an ordinance authorizing the execution of a lease/purchase and a financing agreement and the payment of lease payments for a term of 20 years. The terms of such documents and payments shall be as set forth in such ordinance or ordinances. At

the end of the lease/purchase, the city hall shall revert to the City and the public development authority shall be terminated.

**Section 5. Levy Election.** It is hereby found and declared that an emergency exists requiring the submission to the qualified electors of the City of a proposition authorizing regular property tax levies in excess of the 106% levy limitation for the purposes described in this ordinance and authorizing the City to issue bonds or make lease/purchase payments for such purposes as specified in this ordinance, and a proposition allowing the voters to identify the site for the new city hall, at a special election to be held in conjunction with the General Election on the 3rd day of November, 1987. The King County Manager of Records and Elections as ex officio supervisor of elections is hereby requested also to find the existence of such emergency and to assume jurisdiction of and to call and conduct said special election to be held within the City and to submit to the qualified electors of the City the propositions hereinafter set forth.

The City Clerk is hereby authorized and directed, not less than 45 days prior to November 3, 1987, to certify the following propositions to the King County Manager of Records and Elections in the following form:

CITY OF MERCER ISLAND

PROPOSITION NO. 1

CITY HALL LEVY

To finance the acquisition and/or construction of a new city hall, shall the City of Mercer Island increase its regular property tax levies in the years 1988 through 2007 by a rate not to exceed \$.41 per thousand of assessed valuation (to total approximately \$3.13 per thousand of assessed valuation in 1988) and in the year 2008 reduce regular property tax levies to the amount otherwise provided by law, to provide up to \$4,979,000 plus interest on such amount for up to 20 years, all as specified in Ordinance No. 8-55? LEVY, YES  
LEVY, NO  
PROPOSITION NO. 2  
CITY HALL SITE SELECTION  
If Proposition No. 1 passes, would you prefer to locate the Mercer Island City Hall at the 9611 property, for which facility the taxpayers will pay up to \$4,979,000, plus interest, or at the Mercerdale property, for which facility the taxpayers will pay up to \$4,390,000, plus interest, as more fully described in Ordinance No. 8-55? 9611 Property  
Mercerdale Property

The polls for such special election shall be open from 7:00 a.m. to 8:00 p.m.

Certification of such propositions by the Clerk of the City Council to the King County Manager of Records and Elections, in accordance with law, prior to the date of such election on November 3, 1987, and any other act consistent with the authority and prior to the effective date of this ordinance, are hereby ratified and confirmed.

**Section 6. Severability.** In the event any one or more of the provisions of this ordinance shall for any reason be held to be invalid, such invalidity shall not affect or invalidate any other provision of this ordinance or the bonds, but this ordinance and the bonds shall be construed and enforced as if such invalid provision had not been contained therein; pro-

vided, that any provision which shall for any reason be held by reason of its extent to be invalid shall be deemed to be in effect to the extent permitted by law.

**Section 7. Effective Date.** This ordinance shall become effective five days after its passage and publication.

PASSED by the Council of

the City of Mercer Island, Washington, at a public meeting thereof, held this 14th day of September, 1987.

CITY OF MERCER ISLAND,  
WASHINGTON  
By Fred Jarrett (Signed)  
Mayor  
ATTEST:  
Debra E. Symmonds (Signed)

# COMPLETE TEXT OF Fire Dist. No. 10 Prop. No. 1

KING COUNTY FIRE PROTECTION DISTRICT 10  
ISSAQUAH, WASHINGTON  
RESOLUTION 87-3

A RESOLUTION providing for the submission to the qualified electors of the District at an election to be held on November 3, 1987.

WHEREAS, in the judgment of the Board of Fire Commissioners it is essential and necessary for the protection of the public health, life, and property, that necessary equipment, apparatus and/or personnel be acquired and/or hired and public services be provided to adequately meet the safety needs of the District's community; and,

WHEREAS, the cost increase of operation has exceeded revenue, because of restrictions imposed by RCW 84.55.010;

NOW, THEREFORE BE IT RESOLVED that the Board of Fire Commissioners of King County Fire Protection District 10 submit a proposal to the qualified electors of said district requesting authorization to increase the regular property tax levy to \$1.50 per

thousand of assessed valuation, which is authorized under RCW 84.55.050.

PASSED by the Board of Fire Commissioners of King County Fire Protection District 10 at its regular meeting held on September 14, 1987.

Richard P. Landis (Signed)  
Chairman  
Jerry L. Bragg (Signed)  
Commissioner  
Vaughn Merritt (Signed)  
Commissioner  
Lin Hanson (Signed)  
Administrative Assistant  
SAMPLE BALLOT TITLE  
AUTHORIZING PROPERTY TAX LEVY  
Shall King County Fire Protection District 10 be authorized to increase its regular property tax levy to \$1.50 per thousand dollars of assessed value to be levied initially in 1987 for collection in 1988?  
(This shall not be construed to authorize an excess levy and shall be subject to otherwise applicable statutory limits).  
YES  
NO

---

# MAJOR POLITICAL PARTY CAUCUS AND CONVENTION PROCEDURES

---

In Washington State, the candidates for most offices which appear on the state general election ballot are nominated at a primary election. The most important exception to this procedure is the nomination of candidates for the positions of President and Vice President. This information is presented to familiarize Washington voters with the process by which the nominees for President and Vice President are determined and how Washington residents can participate in that selection process. This section is detachable so that you may keep it after the election for reference.

Delegates to the national nominating conventions of the major political parties from Washington are selected through a system of precinct caucuses, county or legislative district conventions, and finally, the state convention. The first step in this process is the precinct caucus, a neighborhood-level meeting open to all of the members of a particular political party. Precinct caucuses are held in each precinct of the state in the early spring of each presidential year. Individuals are elected from each precinct to attend the legislative district or county convention where the delegates to the state convention are chosen. The delegates to the state convention select the delegates to the national convention at which the presidential and vice-presidential nominees are selected. In addition to the selection of delegates, those persons attending party caucuses and conventions have the opportunity to determine the party platform, vote on resolutions, and meet party candidates for a variety of local, state and national offices.

## DATES OF PRECINCT CAUCUSES AND CONVENTIONS

	Republicans	Democrats
Precinct caucuses	March 8, 1988	March 8, 1988
County conventions	April-June 1988*	April 23, 1988
District conventions	April-June 1988*	April 30, 1988
State convention	July 15-16, 1988	June 11-12, 1988
Location of state convention	Tacoma	Olympia-Tumwater-Lacey

\*Information on the time of all of the caucuses and conventions was not complete at the time this publication was prepared.

## RULES AND PROCEDURES

Each political party has the authority under state law to adopt rules to govern the delegate selection process and other party activities which occur in conjunction with the caucuses and conventions. These party rules specify the number of delegates from each precinct to the county or legislative district convention, the number of delegates from each legislative district or county convention to the state convention, and the procedural rules for conducting the caucuses and conventions. The delegate allocation formulas are usually based on population or a combination of population and the number of votes certain candidates for that party received in the precinct, district or county. A copy of the rules of either party should be available from the state committee of that party in advance of the time precinct caucuses are held.

## ADDITIONAL INFORMATION

The dates and locations of all party caucuses and conventions receive advance press coverage and are generally advertised by the parties. Specific questions you have about any aspect of the nominating procedure may be directed to the state committee of the respective party. They may be able to respond to your inquiry directly or they may refer you to either your precinct committeeperson or your county or district chairperson. The addresses and telephone numbers of the state committees are as follows:

Washington State Republican Party  
Nine Lake Bellevue Drive, Suite 203  
Bellevue, WA 98005  
(206) 451-1988

Washington State Democratic Committee  
1702 Smith Tower  
Seattle, WA 98104  
(206) 583-0664

---

## INDEPENDENT CANDIDATE AND MINOR PARTY NOMINATING PROCEDURES

---

This summary of the procedures governing the nomination of independent and minor party candidates is not meant to be inclusive. Persons interested in being nominated in this manner should consult Chapter 29.24 of the Revised Code of Washington or obtain more detailed information from the office of the Secretary of State, P.O. Box 9000 (AS-22), Legislative Building, Olympia, WA 98504.

### NOMINATING CONVENTION

Any nomination of a candidate for partisan political office other than by major political party must be made by a convention held on the last Saturday preceding the filing period. In 1988, this will be July 23. Notice of the intention to hold a nominating convention must be published in a newspaper of general circulation within the county in which the convention is to be held at least ten days before the date of the convention. A number of registered voters equal to one for each 10,000 voters who voted in the jurisdiction for which each nomination is made or twenty-five such voters, whichever number is greater, must attend the nominating convention and sign the nominating petition for the candidates who are nominated.

### CERTIFICATE OF NOMINATION

The signatures and addresses of the registered voters who attended the convention and a record of the proceedings of the convention must be submitted to the office of the Secretary of State no later than the last day allowed for candidates to file for office. In 1988 this deadline is July 29. Any candidate who is nominated at an independent or minor party convention must file a declaration of candidacy with the Secretary of State and pay the filing fee required for the office sought. (A nominating petition containing signatures of registered voters equal to the dollar amount of the filing fee is permitted for those candidates without sufficient assets or income to pay the filing fee.) The names of all of the candidates who have been nominated by convention will be printed on the primary election ballot together with the major party candidates for their respective offices. With the exception of candidates for the offices of President and Vice President, no candidate may have his or her name printed on the general election ballot unless he or she receives at least one percent of the total votes cast for that office in the partisan primary.

---

## WASHINGTON STATE VOTER INFORMATION

---

### VOTER REGISTRATION

#### Qualifications for registering:

1. You are a U.S. citizen by birth or naturalization.
2. You will be 18 or older on the day of the primary or general election.
3. You are a legal resident of the state of Washington.

#### When to register:

Anytime, but you must register 30 days before the election to be qualified to vote. The voter registration deadline for the 1987 state general election is October 3, 1987.

#### Where to register:

You must register in person at the **King County Division of Records and Elections** or before a city or town clerk or deputy voter registrar. Deputy registrars are located in most public schools, some fire stations and state offices. Contact **Records and Elections at 344-5265** for the location of the registration facility nearest to you.

#### When it is necessary to re-register:

You must re-register only if:

1. You did not vote in the previous 24-month period, or
2. You did not vote in the 1984 presidential election, or
3. You have moved from one county to another, or
4. You have legally changed your name.

To be eligible to vote, you must re-register 30 days before the election. Keep your registration current. Your registration remains valid as long as you exercise your right to vote!

#### If you move, you must transfer your registration:

If you move within a county, you should also change your voter registration. This can be done before a deputy voter registrar or by mail. If you mail the information, include both your old and new addresses and your signature and forward to **Records and Elections Division, 553 King County Administration Building, Seattle, WA 98104**. To be eligible to vote in your new precinct, you must transfer your registration 30 days before the election.

# 1987 GENERAL ELECTION SAMPLE BALLOT

Write in your selection.

REF. BILL 41 \_\_\_\_\_ SJR 8212 \_\_\_\_\_  
 INITIATIVE 92 \_\_\_\_\_ HJR 4212 \_\_\_\_\_  
 SJR 8207 \_\_\_\_\_ HJR 4220 \_\_\_\_\_  
 KING COUNTY PROPOSITION NO. 1 \_\_\_\_\_  
 KING COUNTY ASSESSOR \_\_\_\_\_  
 KING COUNTY COUNCIL DISTRICT NO. 6 \_\_\_\_\_  
 KING COUNTY COUNCIL DISTRICT NO. 8 \_\_\_\_\_  
 COURT OF APPEALS, JUDGE \_\_\_\_\_  
 PORT OF SEATTLE DISTRICT NO. 3 \_\_\_\_\_  
 CITY OF BELLEVUE, COUNCIL \_\_\_\_\_  
 POSITION NO. 1 \_\_\_\_\_  
 POSITION NO. 2 \_\_\_\_\_  
 POSITION NO. 3 \_\_\_\_\_  
 POSITION NO. 4 \_\_\_\_\_  
 CITY OF MERCER ISLAND \_\_\_\_\_  
 PROPOSITION NO. 1 \_\_\_\_\_  
 PROPOSITION NO. 2 \_\_\_\_\_  
 COUNCIL, POSITION NO. 1 \_\_\_\_\_  
 COUNCIL, POSITION NO. 2 \_\_\_\_\_  
 COUNCIL, POSITION NO. 3 \_\_\_\_\_  
 COUNCIL, POSITION NO. 4 \_\_\_\_\_  
 CITY OF REDMOND, MAYOR \_\_\_\_\_  
 COUNCIL, POSITION NO. 1 \_\_\_\_\_  
 COUNCIL, POSITION NO. 2 \_\_\_\_\_  
 COUNCIL, POSITION NO. 3 \_\_\_\_\_  
 COUNCIL, POSITION NO. 4 \_\_\_\_\_  
 MERCER ISLAND SCHOOL DISTRICT NO. 400 \_\_\_\_\_  
 DIRECTOR, POSITION NO. 1 \_\_\_\_\_  
 DIRECTOR, POSITION NO. 2 \_\_\_\_\_

DIRECTOR, POSITION NO. 3 \_\_\_\_\_  
 RENTON SCHOOL DISTRICT NO. 403 \_\_\_\_\_  
 DIRECTOR, DISTRICT NO. 1 \_\_\_\_\_  
 DIRECTOR, DISTRICT NO. 3 \_\_\_\_\_  
 DIRECTOR, DISTRICT NO. 4 \_\_\_\_\_  
 BELLEVUE SCHOOL DISTRICT NO. 405 \_\_\_\_\_  
 DIRECTOR, DISTRICT NO. 1 \_\_\_\_\_  
 DIRECTOR, DISTRICT NO. 2 \_\_\_\_\_  
 DIRECTOR, DISTRICT NO. 4 \_\_\_\_\_  
 ISSAQUAH SCHOOL DISTRICT NO. 411 \_\_\_\_\_  
 DIRECTOR, DISTRICT NO. 1 \_\_\_\_\_  
 DIRECTOR, DISTRICT NO. 3 \_\_\_\_\_  
 DIRECTOR, DISTRICT NO. 5 \_\_\_\_\_  
 LAKE WASHINGTON SCHOOL DISTRICT NO. 414 \_\_\_\_\_  
 DIRECTOR, DISTRICT NO. 1 \_\_\_\_\_  
 DIRECTOR, DISTRICT NO. 4 \_\_\_\_\_  
 DIRECTOR, DISTRICT NO. 5 \_\_\_\_\_  
 WATER DISTRICT NO. 107 \_\_\_\_\_  
 \*WATER DISTRICT NO. 117 \_\_\_\_\_  
 FIRE PROTECTION DISTRICT NO. 10, PROP. 1 \_\_\_\_\_  
 COMMISSIONER \_\_\_\_\_  
 COMMISSIONER, Unexpired 2-Year Term \_\_\_\_\_  
 \*FIRE PROTECTION DISTRICT NO. 14 \_\_\_\_\_  
 FIRE PROTECTION DISTRICT NO. 25, COMMISSIONER \_\_\_\_\_  
 \*FIRE PROTECTION DISTRICT NO. 34 \_\_\_\_\_  
 \*EAST MERCER SEWER DISTRICT \_\_\_\_\_  
 EASTGATE SEWER DISTRICT, COMMISSIONER \_\_\_\_\_  
 \*ROSE HILL SEWER AND WATER DISTRICT \_\_\_\_\_  
 \*PUBLIC HOSPITAL DISTRICT NO. 1 \_\_\_\_\_  
 PUBLIC HOSPITAL DISTRICT NO. 2, COMM. \_\_\_\_\_

\*Jurisdiction not participating in this pamphlet. For information on candidates and issues, contact appropriate jurisdiction.



## Absentee Ballot Application Certification

Mail To: ABSENTEE BALLOT Room 553, King County Administration Building,  
 500 4th Avenue, Seattle, Washington 98104

TO BE FILLED OUT BY APPLICANT

PLEASE PRINT IN INK

IF KNOWN :

I HEREBY DECLARE THAT I AM A REGISTERED VOTER.

Registration No. KI \_\_\_\_\_ - \_\_\_\_\_ - \_\_\_\_\_

Registered Name \_\_\_\_\_

Legislative Dist. \_\_\_\_\_

Street Address \_\_\_\_\_ # \_\_\_\_\_

Cong. Dist. \_\_\_\_\_

City \_\_\_\_\_ Zip \_\_\_\_\_

Telephone: (Day) \_\_\_\_\_ (Evening) \_\_\_\_\_

For identification purposes only: (Optional)

Birth Date \_\_\_\_\_ Social Security No. \_\_\_\_\_

SEND MY BALLOT TO THE FOLLOWING ADDRESS:

Street Address \_\_\_\_\_ # \_\_\_\_\_

City \_\_\_\_\_

State \_\_\_\_\_ Zip \_\_\_\_\_

Country \_\_\_\_\_

TO BE VALID, YOUR WRITTEN SIGNATURE MUST BE INCLUDED

Signature \_\_\_\_\_ Date \_\_\_\_\_

THIS APPLICATION IS FOR THE FOLLOWING:

Primary Election Only Sep \_\_\_\_\_ 19 \_\_\_\_\_

General Election Only Nov \_\_\_\_\_ 19 \_\_\_\_\_

Primary & General Election Sep \_\_\_\_\_ Nov \_\_\_\_\_

Special Election Only \_\_\_\_\_ 19 \_\_\_\_\_

FOR OFFICE USE ONLY.

Precinct Code \_\_\_\_\_

Levy Code \_\_\_\_\_

Ballot Code--P \_\_\_\_\_

Ballot Code--G \_\_\_\_\_

Ballot Mailed \_\_\_\_\_

By issuance of a ballot this dept. certifies that the applicant's signature has been compared against the applicant's registration form, and that the applicant is qualified to receive a ballot.

# We the People

*of the United States*... *in order to form a more perfect Union, establish Justice, insure domestic Tranquility, promote the general Welfare, and secure the Blessings of Liberty to ourselves and our Posterity, do hereby constitute and elect these first three Presidents of the United States of America.*

## Article 1

*All legislative Powers herein granted shall be vested in a Congress of the United States, which shall consist of a Senate and House of Representatives.*

*The House of Representatives shall be composed of Members chosen every second Year by the People of the several States, and the Electors in each State shall have the Qualifications requisite for Electors of the most numerous Branch of the State Legislature.*

*No Person shall be a Representative who shall not have attained to the Age of twenty five Years, seven Years shall have elapsed since the Migration of the People, and he shall, when elected, be seven Years of Age.*

*Representatives and electors in each State shall have the Qualifications requisite for Electors of the most numerous Branch of the State Legislature.*

*Representatives and electors in each State shall have the Qualifications requisite for Electors of the most numerous Branch of the State Legislature.*

*Representatives and electors in each State shall have the Qualifications requisite for Electors of the most numerous Branch of the State Legislature.*

*Representatives and electors in each State shall have the Qualifications requisite for Electors of the most numerous Branch of the State Legislature.*

*Representatives and electors in each State shall have the Qualifications requisite for Electors of the most numerous Branch of the State Legislature.*

*Representatives and electors in each State shall have the Qualifications requisite for Electors of the most numerous Branch of the State Legislature.*

*Representatives and electors in each State shall have the Qualifications requisite for Electors of the most numerous Branch of the State Legislature.*

*Representatives and electors in each State shall have the Qualifications requisite for Electors of the most numerous Branch of the State Legislature.*

*Representatives and electors in each State shall have the Qualifications requisite for Electors of the most numerous Branch of the State Legislature.*

*Representatives and electors in each State shall have the Qualifications requisite for Electors of the most numerous Branch of the State Legislature.*

*Representatives and electors in each State shall have the Qualifications requisite for Electors of the most numerous Branch of the State Legislature.*

*Representatives and electors in each State shall have the Qualifications requisite for Electors of the most numerous Branch of the State Legislature.*

*Representatives and electors in each State shall have the Qualifications requisite for Electors of the most numerous Branch of the State Legislature.*

*Representatives and electors in each State shall have the Qualifications requisite for Electors of the most numerous Branch of the State Legislature.*

*Representatives and electors in each State shall have the Qualifications requisite for Electors of the most numerous Branch of the State Legislature.*

*Representatives and electors in each State shall have the Qualifications requisite for Electors of the most numerous Branch of the State Legislature.*

*Representatives and electors in each State shall have the Qualifications requisite for Electors of the most numerous Branch of the State Legislature.*

*Representatives and electors in each State shall have the Qualifications requisite for Electors of the most numerous Branch of the State Legislature.*

*Representatives and electors in each State shall have the Qualifications requisite for Electors of the most numerous Branch of the State Legislature.*

*Representatives and electors in each State shall have the Qualifications requisite for Electors of the most numerous Branch of the State Legislature.*

*Representatives and electors in each State shall have the Qualifications requisite for Electors of the most numerous Branch of the State Legislature.*

*Representatives and electors in each State shall have the Qualifications requisite for Electors of the most numerous Branch of the State Legislature.*

*Representatives and electors in each State shall have the Qualifications requisite for Electors of the most numerous Branch of the State Legislature.*

*Representatives and electors in each State shall have the Qualifications requisite for Electors of the most numerous Branch of the State Legislature.*

*Representatives and electors in each State shall have the Qualifications requisite for Electors of the most numerous Branch of the State Legislature.*

*Representatives and electors in each State shall have the Qualifications requisite for Electors of the most numerous Branch of the State Legislature.*

*Representatives and electors in each State shall have the Qualifications requisite for Electors of the most numerous Branch of the State Legislature.*

1. 9. 8. 7

# VOTERS' PAMPHLET

## OFFICIAL LOCAL VOTERS' PAMPHLET

### Participating Jurisdictions: King County •

Port of Seattle • City of Bellevue • City of Mercer Island • City of Redmond • Mercer Island School District No. 400 • Renton School District No. 403 • Bellevue School District No. 405 • Issaquah School District No. 411 • Lake Washington School District No. 414 • Fire Protection District No. 10 • Fire Protection District No. 25 • Water District No. 107 • Eastgate Sewer District • Public Hospital District No. 2

## RESIDENTIAL PATRON, LOCAL

ZIP CODES WITHIN REGION 8:  
98005 • 98006 • 98007 • 98008  
98040 • 98009 • 98073

## EDITION 8

BULK RATE  
U.S. POSTAGE  
**PAID**  
Seattle, Washington  
Permit No. 1216

CAR. RT. PRESORT